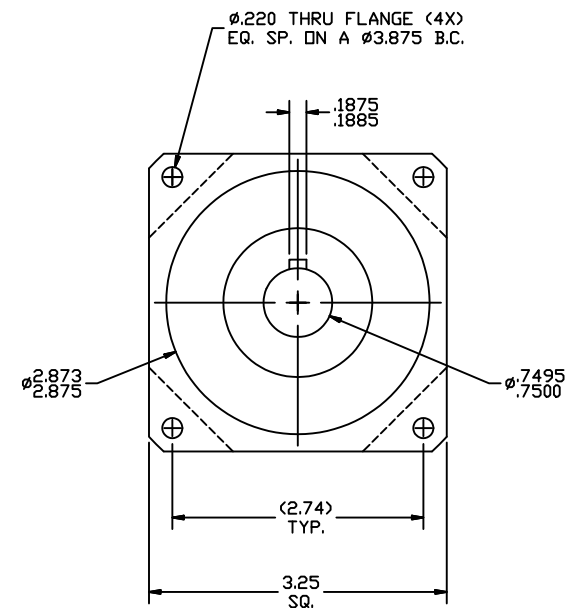
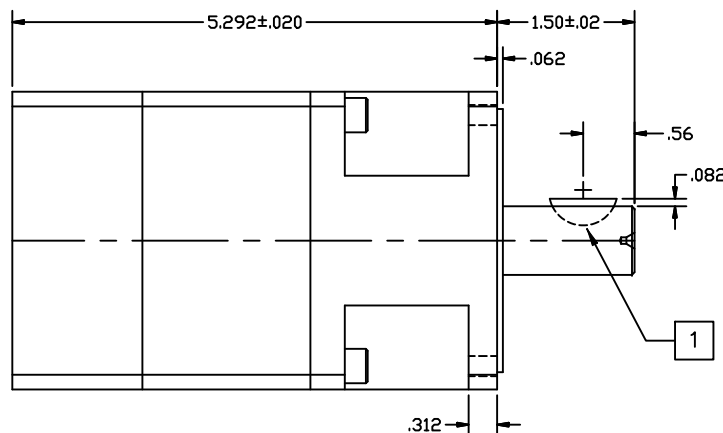
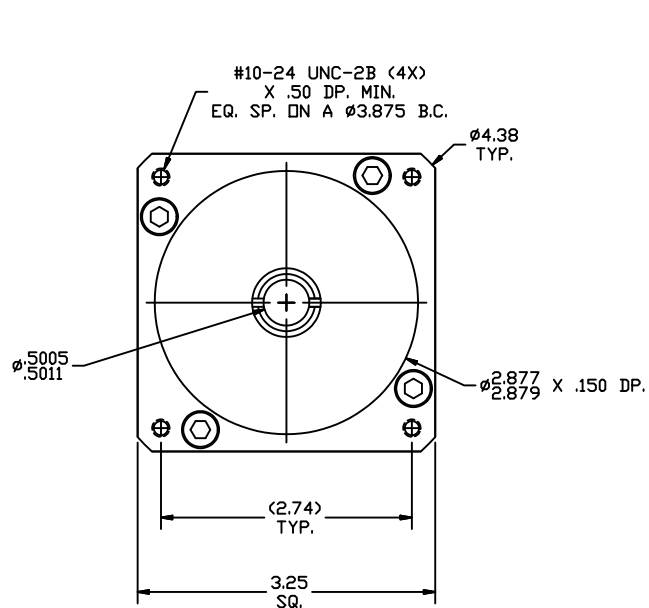

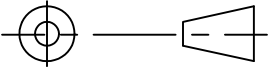


REVISIONS			
REV	DESCRIPTION	DATE	APPROVED
A	INITIAL RELEASE ECO 6709	2/22/13	J Kordik



NOTES: UNLESS OTHERWISE SPECIFIED

- 1 #606 WOODRUFF KEY.
2. 34PL100 RATIO- 100:1
3. FOR TECHNICAL DETAILS, CONTACT APPLIED MOTION PRODUCTS.

TOLERANCES		THIRD ANGLE PROJECTION		 APPLIED MOTION PRODUCTS, INC.		
DECIMALS: [MM] INCH X.XXX= ± .005 X.XX = ±[0.13] .010 X.X = ±[0.25] .020 ANGLES: MACH. = ±.5° CHAM. = ±5°						
COMPUTER DATA BASE DRAWING		APPROVALS	DATE	OUTLINE, GEAR HEAD, PL34, 2 STAGE		
		DRAWN <i>R.JONEZ</i>	<i>2/22/13</i>			
		CHECKED		B	DWG NO. 34PL100	REV A
		APPROVED		SCALE: FULL		SHEET 1 OF 1

Mouser Electronics

Authorized Distributor

Click to View Pricing, Inventory, Delivery & Lifecycle Information:

[Applied Motion:](#)

[34PL100](#) [34PL100-LB](#)