

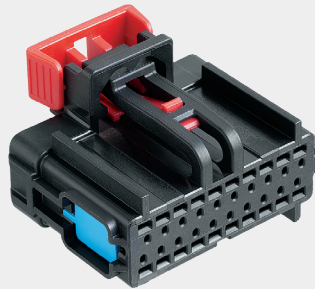
OCS 1.2 Unsealed Series

OCS Family benefits

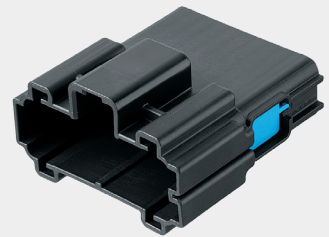
- Enhanced connection system warranty performance
- Robust reliability and design-in durability

1.2 Unsealed Series features

- Optimized connector face to prevent terminal stubbing
- Full Locking System (FLS) for superior terminal locking detection and retention
- Outer cavities accept 1.5mm² cable for greater flexibility (4-20 way)
- Optional Connector Position Assurance (CPA) for higher reliability



OCS 1.2 Unsealed Female Connector



OCS 1.2 Unsealed Male Connector

See back page for representative part numbers.

Available configurations

Cavity Count (ways)	2,4,6,8,12,16,20
Cavity Configurations	All 1.2
Materials	PA, PBT
Mating Type	Hand-Mate
Applications	Passenger Compartment Inlines

Technical characteristics

Temperature Range	T2 (-40 to +100°C)
Vibration Class	V1 (Chassis Profile)
Sealing Class	S1 (Unsealed)

Delphi advantages

Delphi is one of the world's leading automotive and transportation market suppliers of advanced terminals, connectors, sealing, wiring and cable products. Delphi's deep understanding of various connection system technologies and the company's vast research and development capabilities have enabled continuing innovation.

Connect with us at delphi.com



Part numbers

Cavity count	Blade size (mm)	Gender	Dimensions W x H x D (mm)	Part Number	Index	Color	CPA	Indexes offered
2	1.2	F	23 x 10.53 x 11.14	33277559	A	Black	Yes	A, B, C, D
2	1.2	M	35.55 x 14 x 11.93	33277549	A	Black	Yes	A, B, C, D
4	1.2	F	30.5 x 18.14 x 20.48	33198617	A	Black	Yes	A, B, C, D, E, F
4	1.2	M	38.95 x 18.83 x 21.61	33198634	A	Black	Yes	A, B, C, D, E, F
6	1.2	F	30.5 x 23.42 x 20.48	33257488	A	Black	Yes	A, B, C, D, E, F
6	1.2	M	38.95 x 24.63 x 20.17	33257503	A	Black	Yes	A, B, C, D, E, F
8	1.2	F	30.5 x 17.53 x 23.01	33255744	A	Black	Yes	A, B, C, D, E, F
8	1.2	M	38.95 x 19.96 x 24.1	33255759	A	Black	Yes	A, B, C, D, E, F
12	1.2	F	30.5 x 23.33 x 23.01	33250071	A	Black	Yes	A, B, C, D, E, F
12	1.2	M	38.95 x 25.76 x 22.75	33250086	A	Black	Yes	A, B, C, D, E, F
16	1.2	F	30.5 x 29.13 x 23.01	33257519	A	Black	Yes	A, B, C, D, E, F
16	1.2	M	38.95 x 31.56 x 22.75	33257537	A	Black	Yes	A, B, C, D, E, F
20	1.2	F	30.5 x 34.93 x 23.01	33239497	A	Black	Yes	A, B, C, D, E, F
20	1.2	M	38.95 x 37.36 x 22.75	33239518	A	Black	Yes	A, B, C, D, E, F

Part numbers, specifications, dimensions and performance data in this document are for general references only and are subject to change without notice. To verify product information, please contact a Delphi representative.

Mouser Electronics

Authorized Distributor

Click to View Pricing, Inventory, Delivery & Lifecycle Information:

[Aptiv:](#)

[33277549](#) [33299846](#)