



Future Technology Devices International Ltd

EVAL232R FT232RL USB to RS232 Evaluation Module Datasheet

Neither the whole nor any part of the information contained in, or the product described in this manual, may be adapted or reproduced in any material or electronic form without the prior written consent of the copyright holder. This product and its documentation are supplied on an as-is basis and no warranty as to their suitability for any particular purpose is either made or implied. Future Technology Devices International Ltd will not accept any claim for damages howsoever arising as a result of use or failure of this product. Your statutory rights are not affected. This product or any variant of it is not intended for use in any medical appliance, device or system in which the failure of the product might reasonably be expected to result in personal injury. This document provides preliminary information that may be subject to change without notice. No freedom to use patents or other intellectual property rights is implied by the publication of this document. Future Technology Devices International Ltd, Unit 1, 2 Seaward Place, Centurion Business Park, Glasgow, G41 1HH, United Kingdom. Scotland Registered Number: SC136640

Table of Contents

| | | |
|-----------|--|-----------|
| 1 | Introduction | 4 |
| 2 | Typical Applications | 5 |
| 2.1 | Driver Support | 5 |
| 2.2 | Features..... | 6 |
| 3 | FT232RQ Features and Enhancements | 7 |
| 4 | EVAL232R Pin Out and Signal Descriptions | 10 |
| 4.1 | EVAL232R Pin Out..... | 10 |
| 4.2 | Signal Descriptions | 11 |
| 4.3 | CBUS Signal Options | 12 |
| 4.4 | RS232 Signal Descriptions | 13 |
| 5 | Module Dimensions | 14 |
| 6 | Device Characteristics and Ratings | 15 |
| 6.1 | Absolute Maximum Ratings..... | 15 |
| 6.2 | DC Characteristics..... | 15 |
| 6.3 | EEPROM Reliability Characteristics | 17 |
| 6.4 | Internal Clock Characteristics | 17 |
| 7 | Module Configurations | 18 |
| 7.1 | BUS Powered Configuration | 18 |
| 7.2 | Self Powered Configuration | 18 |
| 7.3 | USB Bus Powered with Power Switching Configuration | 18 |
| 7.4 | LED Interface | 19 |
| 8 | EVAL232R Module Circuit Schematic | 20 |
| 9 | Internal EEPROM Configuration..... | 22 |
| 10 | Contact Information..... | 24 |
| | Appendix A – References | 25 |
| | Document References | 25 |
| | Acronyms and Abbreviations | 25 |
| | Appendix B – List of Tables and Figures..... | 26 |
| | List of Tables | 26 |
| | List of Figures | 26 |



Appendix C – Revision History 27

1 Introduction

The EVAL232R is a USB to RS232 evaluation module for FTDI's FT232RL USB - Serial UART interface IC device.

The FT232RL is a USB to serial UART interface with optional clock generator output, and the FTDIChip-ID™ security dongle feature. In addition, asynchronous and synchronous bit bang interface modes are available. USB to serial interface designs using the FT232RL have been further simplified by fully integrating the external EEPROM, clock circuit and USB resistors onto the device.

The FT232RL adds two new functions compared with its predecessors, effectively making it a "3-in-1" chip for some application areas. The internally generated clock (6MHz, 12MHz, 24MHz, and 48MHz) can be brought out of the device and used to drive a microcontroller or external logic. A unique number (the FTDIChip-ID™) is burnt into the device during manufacture and is readable over USB, thus forming the basis of a security dongle which can be used to protect customer application software from being copied.

The EVAL232R is supplied on a 61.0mm x 32.0mm (2.40" x 1.26") PCB. All components used, including the FT232RL and RS232 level converter IC are Pb-free (RoHS compliant).



Figure 1.1 – EVAL232R FT232RL USB to RS232 Evaluation Module

2 Typical Applications

- USB to RS232 Converter
- Upgrading Legacy Peripherals to USB
- USB Audio and Low Bandwidth Video data transfer
- PDA to USB data transfer
- USB Smart Card Readers
- USB Instrumentation
- USB Industrial Control
- USB MP3 Player Interface
- USB FLASH Card Reader / Writers
- Set Top Box PC - USB interface
- USB Digital Camera Interface
- USB Hardware Modems
- USB Wireless Modems
- USB Bar Code Readers
- USB Software / Hardware Encryption Dongles

2.1 Driver Support

Royalty free VIRTUAL COM PORT (VCP) DRIVERS for...

- Windows 10 32,64-bit
- Windows 8/8.1 32,64-bit
- Windows 7 32,64-bit
- Windows Vista and Vista 64-bit
- Windows XP and XP 64-bit
- Windows 98, 98SE, ME, 2000, Server 2003, XP, Server 2008 and server 2012 R2
- Windows XP Embedded
- Windows CE 4.2, 5.0 and 6.0
- Mac OS 8/9, OS-X
- Linux 2.4 and greater

Royalty free D2XX *Direct* Drivers (USB Drivers + DLL S/W Interface)

- Windows 10 32,64-bit
- Windows 8/8.1 32,64-bit
- Windows 7 32,64-bit
- Windows Vista and Vista 64-bit
- Windows XP and XP 64-bit
- Windows 98, 98SE, ME, 2000, Server 2003, XP, Server 2008 and server 2012 R2
- Windows XP Embedded
- Windows CE 4.2, 5.0 and 6.0
- Linux 2.4 and greater
- Android(J2xx)

The drivers listed above are all available to download for free from [FTDI website \(www.ftdichip.com\)](http://www.ftdichip.com). Various 3rd party drivers are also available for other operating systems - see [FTDI website \(www.ftdichip.com\)](http://www.ftdichip.com) for details.

For driver installation, please refer to <http://www.ftdichip.com/Documents/InstallGuides.htm>

2.2 Features

The EVAL232R has the following features:

- FT232RL provides single chip USB to asynchronous serial data transfer interface.
- Module provides USB to RS232 interface, with additional I/O pinout.
- Entire USB protocol handled on the FT232RL chip - No USB-specific firmware programming required.
- UART interface support for 7 or 8 data bits, 1 or 2 stop bits and odd / even / mark / space / no parity.
- Fully assisted hardware or X-On / X-Off software handshaking.
- Data transfer rates from 300 baud to 1 Megabaud at RS232 levels.
- FTDI's royalty-free VCP and D2XX drivers eliminate the requirement for USB driver development in most cases.
- In-built support for event characters and line break condition.
- New USB FTDIChip-ID™ feature.
- New configurable CBUS I/O pins.
- Transmit and receive LED's to indicate serial data transfer.
- New 48MHz, 24MHz, 12MHz, and 6MHz clock output signal Options.
- FIFO receive and transmit buffers for high data throughput.
- Adjustable receive buffer timeout.
- Synchronous and asynchronous bit bang mode interface options with RD# and WR# strobes.
- New CBUS bit bang mode option.
- Integrated 1024 bit internal EEPROM for storing USB VID, PID, serial number and product description strings, and CBUS I/O configuration.
- Device supplied pre-programmed with unique USB serial number.
- Support for USB suspend and resume.
- Module supply voltage comes from VCC – no external supply required.
- 5V USB power available to supply external devices.
- Integrated 3.3V level converter for USB I/O
- Integrated level converter on UART and CBUS for interfacing to 5V - 1.8V Logic.
- On board jumper allows for selection of UART and CBUS interface IO voltage.
- True 5V / 3.3V / 2.8V / 1.8V CMOS drive output and TTL input.
- High I/O pin output drive option.
- Integrated USB resistors.
- Integrated power-on-reset circuit.
- Fully integrated clock - no external crystal, oscillator, or resonator required.
- Fully integrated AVCC supply filtering - No separate AVCC pin and no external R-C filter required.
- USB bulk transfer mode.
- Low operating and USB suspend current.
- Low USB bandwidth consumption.
- UHCI / OHCI / EHCI host controller compatible
- USB 2.0 Full Speed compatible.
- -40°C to 85°C extended operating temperature range.
- Supplied on miniature 61.0mm x 32.0mm (2.40" x 1.26") PCB with 15 board header pins.
- Connect to a PC via a standard USB A to B USB cable.

3 FT232RQ Features and Enhancements

Key Features

This section summarises the key features and enhancements of the FT232RL IC device which is used on the EVAL232R Module. For further details, consult the FT232R datasheet, which is available from www.ftdichip.com.

Integrated Clock Circuit - Previous generations of FTDI's USB UART devices required an external crystal or ceramic resonator. The clock circuit has now been integrated onto the device meaning that no crystal or ceramic resonator is required. However, if preferred, an external 12MHz crystal can be used as the clock source.

Integrated EEPROM - Previous generations of FTDI's USB UART devices required an external EEPROM if the device were to use USB Vendor ID (VID), Product ID (PID), serial number and product description strings other than the default values in the device itself. This external EEPROM has now been integrated onto the FT232R chip meaning that all designs have the option to change the product description strings. A user area of the internal EEPROM is available for storing additional data. The internal EEPROM is programmable in circuit, over USB without any additional voltage requirement.

Preprogrammed EEPROM - The FT232R is supplied with its internal EEPROM pre-programmed with a serial number which is unique to each individual device. This, in most cases, will remove the need to program the device EEPROM.

Integrated USB Resistors - Previous generations of FTDI's USB UART devices required two external series resistors on the USBDP and USBDM lines, and a 1.5 k Ω pull up resistor on USBDP. These three resistors have now been integrated onto the device.

Integrated AVCC Filtering - Previous generations of FTDI's USB UART devices had a separate AVCC pin – the supply to the internal PLL. This pin required an external R-C filter. The separate AVCC pin is now connected internally to VCC, and the filter has now been integrated onto the chip.

Less External Components - Integration of the crystal, EEPROM, USB resistors, and AVCC filter will substantially reduce the bill of materials cost for USB interface designs using the FT232R compared to its FT232BM predecessor.

Configurable CBUS I/O Pin Options - There are now 5 configurable Control Bus (CBUS) lines. Options are **TXDEN** - transmit enable for RS485 designs, **PWREN#** - Power control for high power, bus powered designs, **TXLED#** - for pulsing an LED upon transmission of data, **RXLED#** - for pulsing an LED upon receiving data, **TX&RXLED#** - which will pulse an LED upon transmission OR reception of data, **SLEEP#** - indicates that the device going into USB suspend mode, **CLK48 / CLK24 / CLK12 / CLK6** - 48MHz, 24MHz, 12MHz, and 6MHz clock output signal options. There is also the option to bring out bit bang mode read and write strobes (see below). The CBUS lines can be configured with any one of these output options by setting bits in the internal EEPROM. The device is supplied with the most commonly used pin definitions pre-programmed - see [Section 9](#) for details.

Enhanced Asynchronous Bit Bang Mode with RD# and WR# Strobes - The FT232R supports FTDI's BM chip bit bang mode. In bit bang mode, the eight UART lines can be switched from the regular interface mode to an 8-bit general purpose I/O port. Data packets can be sent to the device and they will be sequentially sent to the interface at a rate controlled by an internal timer (equivalent to the baud rate prescaler). With the FT232R device this mode has been enhanced so that the internal RD# and WR# strobes are now brought out of the device which can be used to allow external logic to be clocked by accesses to the bit bang I/O bus. This option will be described more fully in a separate application note.

Synchronous Bit Bang Mode - Synchronous bit bang mode differs from asynchronous bit bang mode in that the interface pins are only read when the device is written to. Thus making it easier for the controlling program to measure the response to an output stimulus as the data returned is synchronous to the output data. The feature was previously seen in FTDI's FT2232C device. This option will be described more fully in a separate application note.

CBUS Bit Bang Mode - This mode allows four of the CBUS pins to be individually configured as GPIO pins, similar to Asynchronous bit bang mode. It is possible to use this mode while the UART interface is being

used, thus providing up to four general purpose I/O pins which are available during normal operation. An application note describing this feature is available separately from www.ftdichip.com.

Lower Supply Voltage - Previous generations of the chip required 5V supply on the VCC pin. The FT232R will work with a VCC supply in the range 3.5V to 5.25V. Bus powered designs would still take their supply from the 5V on the USB bus, but for self-powered designs where only 3.5V is available and there is no 5V supply there is no longer any need for an additional external regulator.

Integrated Level Converter on UART Interface and Control Signals - VCCIO pin supply can be from 1.8V to 5V. Connecting the VCCIO pin to 1.8V, 2.8V, or 3.3V allows the device to directly interface to 1.8V, 2.8V or 3.3V and other logic families without the need for external level converter I.C. devices.
5V / 3.3V / 2.8V / 1.8V Logic Interface - The FT232R provides *true* CMOS Drive Outputs and TTL level Inputs.

Integrated Power-On-Reset (POR) Circuit- The device incorporates an internal POR function. A RESET# pin is available in order to allow external logic to reset the FT232R where required. However, for many applications the RESET# pin can be left unconnected, or pulled up to VCCIO.

Lower Operating and Suspend Current - The device operating supply current has been further reduced to 15mA, and the suspend current has been reduced to around 70µA. This allows greater margin for peripheral designs to meet the USB suspend current limit of 500µA.

Low USB Bandwidth Consumption - The operation of the USB interface to the FT232R has been designed to use as little as possible of the total USB bandwidth available from the USB host controller.

High Output Drive Option - The UART interface and CBUS I/O pins can be made to drive out at three times the standard signal drive level thus allowing multiple devices to be driven, or devices that require greater signal drive strength to be interfaced to the FT232R. This option is enabled in the internal EEPROM.

Power Management Control for USB Bus Powered, High Current Designs - The PWREN# signal can be used to directly drive a transistor or P-Channel MOSFET in applications where power switching of external circuitry is required. An option in the internal EEPROM makes the device gently pull down on its UART interface lines when the power is shut off (PWREN# is high). In this mode any residual voltage on external circuitry is bled to GND when power is removed, thus ensuring that external circuitry controlled by PWREN# resets reliably when power is restored.

UART Pin Signal Inversion - The sense of each of the eight UART signals can be individually inverted by setting options in the internal EEPROM. Thus, CTS# (active low) can be changed to CTS (active high), or TXD can be changed to TXD#.

FTDChip-ID™ - Each FT232R is assigned a unique number which is burnt into the device at manufacture. This ID number cannot be reprogrammed by product manufacturers or end-users. This allows the possibility of using FT232R based dongles for software licensing. Further to this, a renewable license scheme can be implemented based on the FTDChip-ID™ number when encrypted with other information. This encrypted number can be stored in the user area of the FT232R internal EEPROM, and can be decrypted, then compared with the protected FTDChip-ID™ to verify that a license is valid. Web based applications can be used to maintain product licensing this way. An application note describing this feature is available separately from www.ftdichip.com.

Improved EMI Performance - The reduced operating current and improved on-chip VCC decoupling significantly improves the ease of PCB design requirements in order to meet FCC, CE and other EMI related specifications.

Programmable Receive Buffer Timeout - The receive buffer timeout is used to flush remaining data from the receive buffer. This time defaults to 16ms, but is programmable over USB in 1ms increments from 1ms to 255ms, thus allowing the device to be optimised for protocols that require fast response times from short data packets.

Baud Rates - The FT232R supports all standard baud rates and non-standard baud rates from 300 Baud up to 3 Megabaud. Achievable non-standard baud rates are calculated as follows -Baud Rate = $3000000 / (n + x)$ where 'n' can be any integer between 2 and 16,384 ($= 2^{14}$) and 'x' can be a sub-integer of the value 0, 0.125, 0.25, 0.375, 0.5, 0.625, 0.75, or 0.875. When $n = 1$, $x = 0$, i.e. baud rate divisors with values between 1 and 2 are not possible. This gives achievable baud rates in the range 183.1 baud to 3,000,000

baud. When a non-standard baud rate is required simply pass the required baud rate value to the driver as normal, and the FTDI driver will calculate the required divisor, and set the baud rate. See FTDI application note AN232B-05 for more details.

Extended Operating Temperature Range - The FT232R operates over an extended temperature range of -40° to +85° C thus allowing the device to be used in automotive and industrial applications.

New Package Options - The FT232R is available in two packages - a compact 28 pin SSOP (FT232RL) and an ultra-compact 5mm x 5mm pinless QFN-32 package (FT232RQ). Both packages are lead (Pb) free, and use a 'green' compound. Both packages are fully compliant with European Union directive 2002/95/EC. The EVAL232R module uses a FT232RL device in its design.

4 EVAL232R Pin Out and Signal Descriptions

4.1 EVAL232R Pin Out

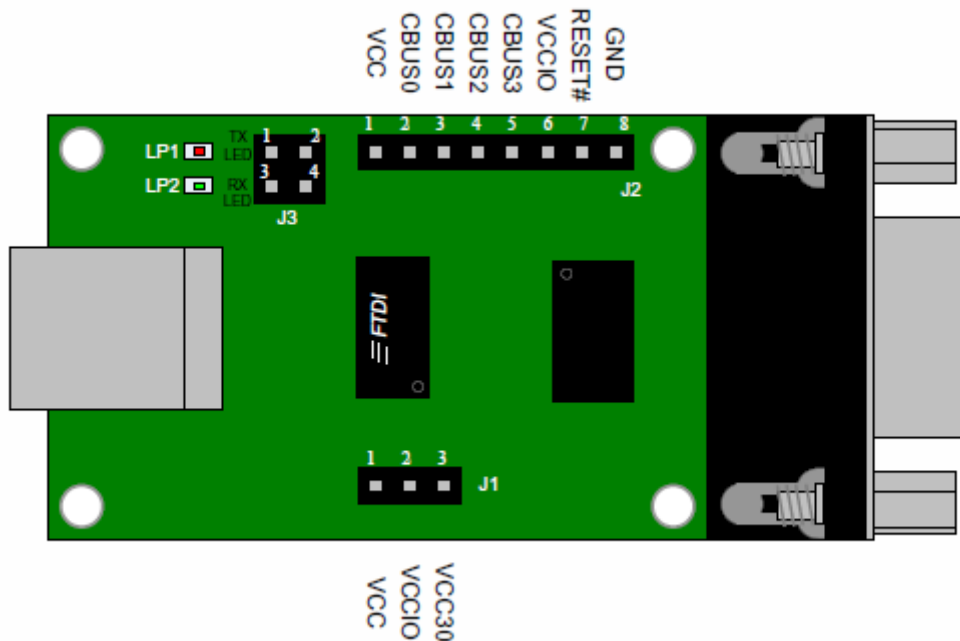


Figure 4.1 Module Pin Out

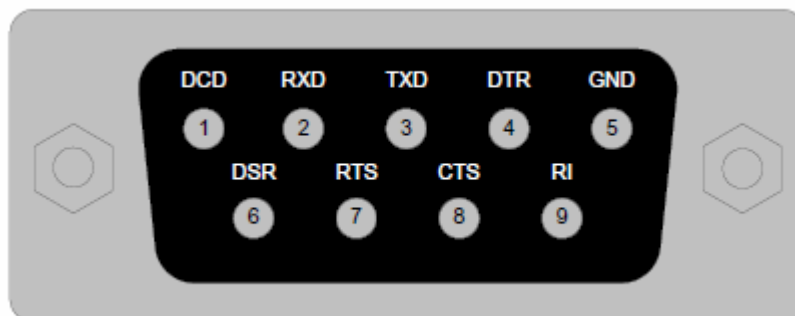


Figure 4.2 EVAL232R RS232 (DB9) Pin Out

4.2 Signal Descriptions

| Pin No. | Name | Type | Description |
|---------|-------|--------|---|
| 1 | VCC | Output | 5V Power output USB port. For a low power USB bus powered design, up to 100mA can be sourced from the 5V supply on the USB bus. A maximum of 500mA can be sourced from the USB bus in a high power USB bus powered design. |
| 2 | VCCIO | Input | +1.8V to +5.25V supply to the FT232RL's UART Interface and CBUS I/O pins. In USB bus powered designs connect to 3V3 to drive out at 3.3V levels (connect VCCIO to VCC3O), or connect to VCC to drive out at 5V CMOS level (connect VCCIO to VCC). This pin can also be supplied with an external 1.8V - 2.8V supply in order to drive out at lower levels. It should be noted that in this case this supply should originate from the same source as the supply to Vcc. This means that in bus powered designs (like the EVAL232R for example) a regulator which is supplied by the 5V on the USB bus should be used. |
| 3 | VCC3O | Output | 3.3V output from FT232RL's integrated L.D.O. regulator. This pin is decoupled to ground on the module pcb with a 100nF capacitor. The prime purpose of this pin is to provide the internal 3.3V supply to the USB transceiver cell and the internal 1.5kΩ pull up resistor on USB DP. Up to 50mA can be drawn from this pin to power external logic if required. This pin can also be used to supply the FT232RL's VCCIO pin by connecting this pin to pin 3 (VCCIO). |

Table 4.1 Module Pin Out Description for Jumper J1

| Pin No. | Name | Type | Description |
|---------|--------|--------|--|
| 1 | VCC | Output | 5V Power output USB port. For a low power USB bus powered design, up to 100mA can be sourced from the 5V supply on the USB bus. A maximum of 500mA can be sourced from the USB bus in a high power USB bus powered design. |
| 2 | CBUS0 | Input | Configurable CBUS I/O Pin. Function of this pin is configured in the device internal EEPROM. Factory default pin function for the EVAL232R module is RXLED#. See CBUS Signal Options, Table 4.4* |
| 3 | CBUS1 | Output | Configurable CBUS I/O Pin. Function of this pin is configured in the device internal EEPROM. Factory default pin function for the EVAL232R module is TXLED#. See CBUS Signal Options, Table 4.4* |
| 4 | CBUS2 | Output | Configurable CBUS I/O Pin. Function of this pin is configured in the device internal EEPROM. Factory default pin function for the EVAL232R module is PWREN#. See CBUS Signal Options, Table 4.4* |
| 5 | CBUS3 | Output | Configurable CBUS I/O Pin. Function of this pin is configured in the device internal EEPROM. Factory default pin function for the EVAL232R module is PWREN#. See CBUS Signal Options, Table 4.4* |
| 6 | VCC3O | Output | 3.3V output from FT232RL's integrated L.D.O. regulator. This pin is decoupled to ground on the module pcb with a 100nF capacitor. The prime purpose of this pin is to provide the internal 3.3V supply to the USB transceiver cell and the internal 1.5kΩ pull up resistor on USB DP. Up to 50mA can be drawn from this pin to power external logic if required. |
| 7 | RESET# | Input | Can be used by an external device to reset the FT232R. If not required can be left unconnected, or pulled up to VCCIO. |
| 8 | GND | GND | Module ground supply pins |

Table 4.2 Module Pin Out Description for 8 Pin Header J2

| Pin No. | Name | Type | Description |
|---------|-------|--------|--|
| 1 | CBUS0 | Output | Configurable CBUS I/O Pin. Function of this pin is configured in the device internal EEPROM. Factory default pin function for the EVAL232R module is RXLED#. See CBUS Signal Options, Table 4.4* Connect to LP1 to drive the red receive data LED (module default) |
| 2 | LP1 | Input | Red receive data LED |
| 3 | CBUS1 | Output | Configurable CBUS I/O Pin. Function of this pin is configured in the device internal EEPROM. Factory default pin function for the EVAL232R module is TXLED#. See CBUS Signal Options, Table 4.4* Connect to LP2 to drive the green transmit data LED (module default) |
| 4 | LP2 | Input | Green transmit data LED |

Table 4.3 Module Pin Out Description for Jumper J3

* When used in Input Mode, these pins are pulled to VCCIO via internal 200kΩ resistors. These pins can be programmed to gently pull low during USB suspend (PWREN# = "1") by setting an option in the internal EEPROM.

4.3 CBUS Signal Options

The following options can be configured on the CBUS I/O pins. These options are all configured in the internal EEPROM using the utility software [FT_PROG](#), which can be downloaded from the www.ftdichip.com. The default configuration is described in [Section 9](#).

| CBUS Signal Option | Available On CBUS Pin | Description |
|--------------------|-----------------------------------|---|
| TXDEN# | CBUS0, CBUS1, CBUS2, CBUS3, CBUS4 | Enable transmit data for RS485 |
| PWREN# | CBUS0, CBUS1, CBUS2, CBUS3, CBUS4 | Goes low after the device is configured by USB, then high during USB suspend. Can be used to control power to external logic in high power designs. Needs 10k pull up to VCC. |
| TXLED# | CBUS0, CBUS1, CBUS2, CBUS3, CBUS4 | Transmit data LED drive – pulses low when transmitting data via USB. |
| RXLED# | CBUS0, CBUS1, CBUS2, CBUS3, CBUS4 | Receive data LED drive – pulses low when receiving data via USB. |
| TX&RXLED# | CBUS0, CBUS1, CBUS2, CBUS3, CBUS4 | LED drive – pulses low when transmitting or receiving data via USB. See |
| SLEEP# | CBUS0, CBUS1, CBUS2, CBUS3, CBUS4 | Goes low during USB suspend mode. Typically used to power down an external TTL to RS232 level converter I.C. in USB to RS232 converter designs. |
| CLK48 | CBUS0, CBUS1, CBUS2, CBUS3, CBUS4 | 48MHz Clock output. |
| CLK24 | CBUS0, CBUS1, CBUS2, CBUS3, CBUS4 | 24 MHz Clock output. |
| CLK12 | CBUS0, CBUS1, CBUS2, CBUS3, CBUS4 | 12 MHz Clock output. |

| CBUS Signal Option | Available On CBUS Pin | Description |
|--------------------|-----------------------------------|--|
| | CBUS4 | |
| CLK6 | CBUS0, CBUS1, CBUS2, CBUS3, CBUS4 | 6 MHz Clock output. |
| CBitBangI/O | CBUS0, CBUS1, CBUS2, CBUS3 | CBUS bit bang mode option. Allows up to 4 of the CBUS pins to be used as general purpose I/O. Configured individually for CBUS0, CBUS1, CBUS2 and CBUS3 in the internal EEPROM. A separate application note describes in more detail how to use CBUS bit bang mode. (www.ftdichip.com) |
| BitBangWRn | CBUS0, CBUS1 | Synchronous and asynchronous bit bang mode WR# strobe Output. |
| BitBangRDn | CBUS0, CBUS1, CBUS2, CBUS3 | Synchronous and asynchronous bit bang mode RD# strobe Output. |

Table 4.4 CBUS Signal Options

4.4 RS232 Signal Descriptions

| DB9 pin No. | Name | Type | Description |
|-------------|--------|--------|--|
| 1 | DCD | Input | Data Carrier Detect control input |
| 2 | RXDATA | Input | Receive Asynchronous Data input. |
| 3 | TXDATA | Output | Transmit Asynchronous Data output. |
| 4 | DTR | Output | Data Terminal Ready control output / Handshake signal |
| 5 | GND | GND | Device ground supply pin. |
| 6 | DSR | Input | Data Set Ready control input / Handshake signal |
| 7 | RTS | Output | Request To Send Control Output / Handshake signal. |
| 8 | CTS | Input | Clear to Send Control input / Handshake signal. |
| 9 | RI | Input | Ring Indicator control input. When remote wakeup is enabled in the FT232RL's internal EEPROM taking RI# low can be used to resume the PC USB host controller from suspend. |

Table 4.5 RS232 Signal Descriptions

5 Module Dimensions

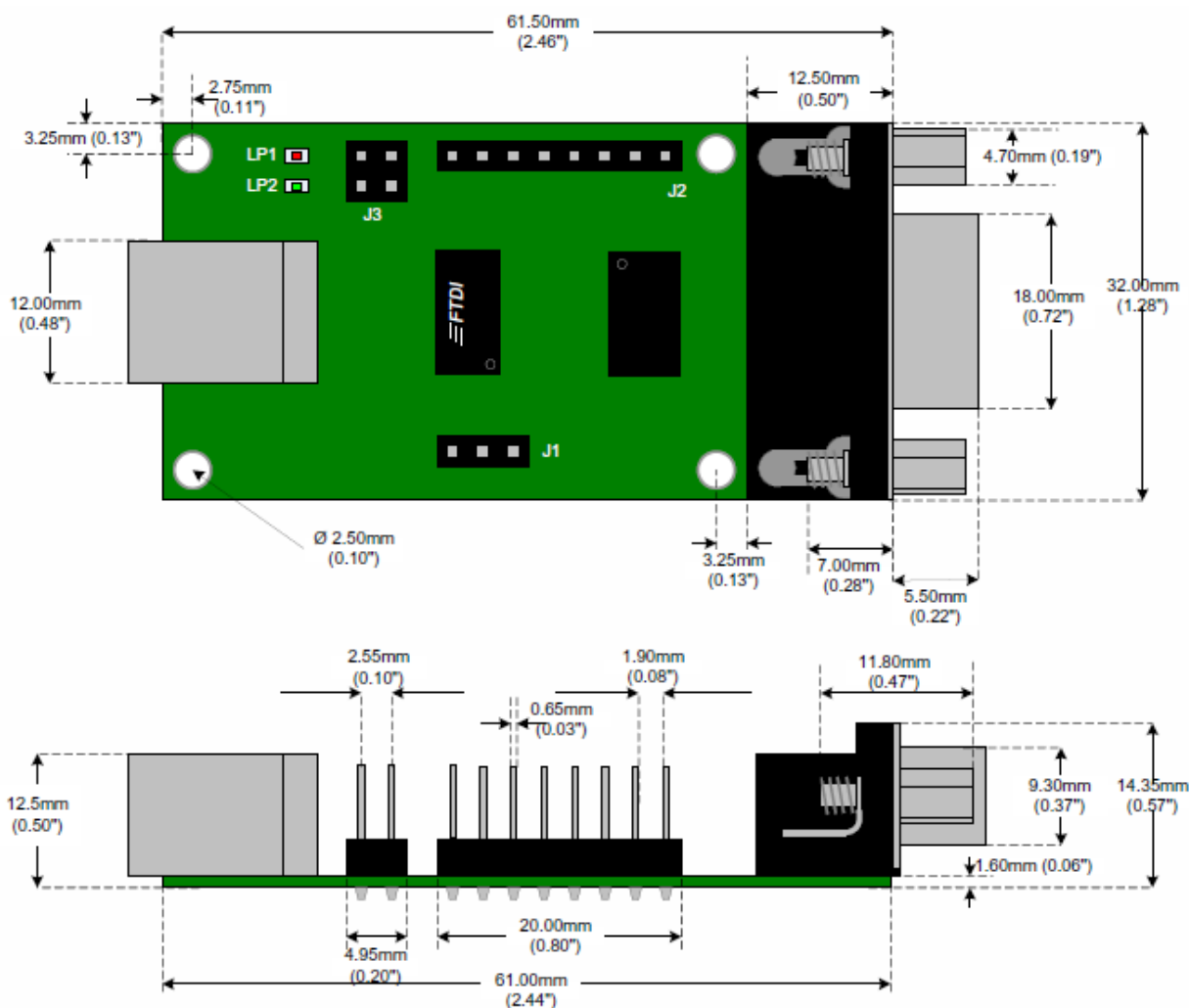


Figure 5.1 EVAL232R Module Dimensions

All dimensions are in millimetres, with inches in parenthesis.

The FT232RL is supplied in a RoHS compliant 28 pinSSOP package. The package is lead (Pb) free and uses a 'green' compound. The date code format is YYXX where XX = 2 digit week number, YY = 2 digit year number.

The EVAL232R module uses exclusively lead free components.

Both the I.C. device and the module are fully compliant with European Union directive 2002/95/EC.

6 Device Characteristics and Ratings

6.1 Absolute Maximum Ratings

The absolute maximum ratings for the FT232R devices are as follows. These are in accordance with the Absolute Maximum Rating System (IEC 60134). Exceeding these may cause permanent damage to the device.

| Parameter | Value | Unit |
|---|--|------------|
| Storage Temperature | -65°C to 150°C | Degrees C |
| Floor Life (Out of Bag) At Factory Ambient (30°C / 60% Relative Humidity) | 168 Hours (IPC/JEDEC J-STD-033A MSL Level 3 Compliant)* | Hours |
| Ambient Temperature (Power Applied) | -40°C to 85°C | Degrees C. |
| Vcc Supply Voltage | -0.5 to +6.00 | V |
| D.C. Input Voltage - USBDP and USBDM | -0.5 to +3.8 | V |
| D.C. Input Voltage - High Impedance Bidirectional | -0.5 to +(Vcc +0.5) | V |
| D.C. Input Voltage - All other Inputs | -0.5 to +(Vcc +0.5) | V |
| D.C. Output Current - Outputs | 24 | mA |
| DC Output Current - Low Impedance Bidirectional | 24 | mA |
| Power Dissipation (Vcc = 5.25V) | 500 | mW |

Table 6.1 Absolute Maximum Ratings

* If devices are stored out of the packaging beyond this time limit the devices should be baked before use. The devices should be ramped up to a temperature of 125°C and baked for up to 17 hours.

6.2 DC Characteristics

DC Characteristics (Ambient Temperature = -40 to 85oC)

| Parameter | Description | Min | Typ | Max | Units | Conditions |
|-------------|--------------------------------|-----|-----|------|-------|------------------|
| Vcc1 | VCC Operating Supply Voltage | 3.3 | - | 5.25 | V | |
| Vcc2 | VCCIO Operating Supply Voltage | 1.8 | - | 5.25 | V | |
| Icc1 | Operating Supply Current | - | 15 | - | mA | Normal Operation |
| Icc2 | Operating Supply Current | 50 | 70 | 100 | μA | USB Suspend* |

Table 6.2 Operating Voltage and Current

| Parameter | Description | Min | Typ | Max | Units | Conditions |
|-------------|----------------------------|-----|-----|-----|-------|----------------|
| Voh | Output Voltage High | 3.2 | 4.1 | 4.9 | V | I source = 2mA |
| Vol | Output Voltage Low | 0.3 | 0.4 | 0.6 | V | I sink = 2mA |
| Vin | Input Switching Threshold | 1.3 | 1.6 | 1.9 | V | ** |
| VHys | Input Switching Hysteresis | 50 | 55 | 60 | mV | ** |

Table 6.3 FT232R UART and CBUS I/O Pin Characteristics (VCCIO = 5.0V, Standard Drive Level)

| Parameter | Description | Min | Typ | Max | Units | Conditions |
|-------------|----------------------------|-----|-----|-----|-------|----------------|
| Voh | Output Voltage High | 2.2 | 2.7 | 3.2 | V | I source = 1mA |
| Vol | Output Voltage Low | 0.3 | 0.4 | 0.5 | V | I sink = 2mA |
| Vin | Input Switching Threshold | 1.0 | 1.2 | 1.5 | V | ** |
| VHys | Input Switching Hysteresis | 20 | 25 | 30 | mV | ** |

Table 6.4 FT232R UART and CBUS I/O Pin Characteristics (VCCIO = 3.3V, Standard Drive Level)

| Parameter | Description | Min | Typ | Max | Units | Conditions |
|-------------|----------------------------|-----|-----|-----|-------|----------------|
| Voh | Output Voltage High | 2.1 | 2.6 | 3.1 | V | I source = 1mA |
| Vol | Output Voltage Low | 0.3 | 0.4 | 0.5 | V | I sink = 2mA |
| Vin | Input Switching Threshold | 1.0 | 1.2 | 1.5 | V | ** |
| VHys | Input Switching Hysteresis | 20 | 25 | 30 | mV | ** |

Table 6.5 FT232R UART and CBUS I/O Pin Characteristics (VCCIO = 2.8V, Standard Drive Level)

| Parameter | Description | Min | Typ | Max | Units | Conditions |
|-------------|----------------------------|-----|-----|-----|-------|----------------|
| Voh | Output Voltage High | 3.2 | 4.1 | 4.9 | V | I source = 6mA |
| Vol | Output Voltage Low | 0.3 | 0.4 | 0.6 | V | I sink = 6mA |
| Vin | Input Switching Threshold | 1.3 | 1.6 | 1.9 | V | ** |
| VHys | Input Switching Hysteresis | 50 | 55 | 60 | mV | ** |

Table 6.6 FT232R UART and CBUS I/O Pin Characteristics (VCCIO = 5.0V, High Drive Level)

| Parameter | Description | Min | Typ | Max | Units | Conditions |
|-------------|----------------------------|-----|-----|-----|-------|----------------|
| Voh | Output Voltage High | 2.2 | 2.8 | 3.2 | V | I source = 3mA |
| Vol | Output Voltage Low | 0.3 | 0.4 | 0.6 | V | I sink = 8mA |
| Vin | Input Switching Threshold | 1.0 | 1.2 | 1.5 | V | ** |
| VHys | Input Switching Hysteresis | 20 | 25 | 30 | mV | ** |

Table 6.7 FT232R UART and CBUS I/O Pin Characteristics (VCCIO = 3.3V, High Drive Level)

| Parameter | Description | Min | Typ | Max | Units | Conditions |
|-------------|----------------------------|-----|-----|-----|-------|----------------|
| Voh | Output Voltage High | 2.1 | 2.8 | 3.2 | V | I source = 3mA |
| Vol | Output Voltage Low | 0.3 | 0.4 | 0.6 | V | I sink = 8mA |
| Vin | Input Switching Threshold | 1.0 | 1.2 | 1.5 | V | ** |
| VHys | Input Switching Hysteresis | 20 | 25 | 30 | mV | ** |

Table 6.8 FT232R UART and CBUS I/O Pin Characteristics (VCCIO = 2.8V, High Drive Level)

**Inputs have an internal 200kΩ pull-up resistor to VCCIO.

| Parameter | Description | Min | Typ | Max | Units | Conditions |
|-------------|----------------------------|-----|-----|-----|-------|------------|
| Vin | Input Switching Threshold | 1.3 | 1.6 | 1.9 | V | |
| VHys | Input Switching Hysteresis | 50 | 55 | 60 | mV | |

Table 6.9 FT232R RESET# and TEST Pin Characteristics

| Parameter | Description | Min | Typ | Max | Units | Conditions |
|--------------|---------------------------------|-----|-----|-----|-------|--|
| UVoh | I/O Pins Static Output (High) | 2.8 | | 3.6 | V | RI = 1.5k Ω to 3V3Out (D+) RI = 15k Ω to GND (D-) |
| UVol | I/O Pins Static Output (Low) | 0 | | 0.3 | V | RI = 1.5k Ω to 3V3Out (D+) RI = 15k Ω to GND (D-) |
| UVse | Single Ended Rx Threshold | 0.8 | | 2.0 | V | |
| UCom | Differential Common Mode | 0.8 | | 2.5 | V | |
| UVDif | Differential Input Sensitivity | 0.2 | | | V | |
| UDrvZ | Driver Output Impedance | 26 | 29 | 44 | Ohms | *** |

Table 6.10 FT232R USB I/O Pin (USBDP, USBDM) Characteristics

***Driver Output Impedance includes the internal USB series resistors on USBDP and USBDM pins.

6.3 EEPROM Reliability Characteristics

The FT232R's internal 1024 bit EEPROM has the following reliability characteristics:

| Parameter | Value | Unit |
|--------------------|---------|--------|
| Data Retention | 15 | Years |
| Read / Write Cycle | 100,000 | Cycles |

Table 6.11 EEPROM Characteristics

6.4 Internal Clock Characteristics

The FT232R's internal Clock Oscillator has the following characteristics:

| Parameter | Value | | | Unit |
|------------------------|---------|---------|---------|------|
| | Minimum | Typical | Maximum | |
| Frequency of Operation | 11.98 | 12.00 | 12.02 | MHz |
| Clock Period | 83.19 | 83.33 | 83.47 | ns |
| Duty Cycle | 45 | 50 | 55 | % |

Table 6.12 Internal Clock Characteristics

7 Module Configurations

7.1 BUS Powered Configuration

The EVAL232R module is designed to be powered from the 5V supply available on the USB bus powered. VCCIO, the supply to the FT232RL's UART and CBUS IO pins, can be connected to VCC or VCC30, depending on whether 5V or 3.3V output levels are required on the CBUS.

A USB Bus Powered device gets its power from the USB bus. Basic rules for USB Bus power devices are as follows –

- i) On plug-in to USB, the device must draw no more than 100mA.
- ii) On USB Suspend the device must draw no more than 500µA.
- iii) A Bus Powered High Power USB Device (one that draws more than 100mA) should use PWREN# to keep the current below 100mA on plug-in and 500µA on USB suspend.
- iv) A device that consumes more than 100mA cannot be plugged into a USB Bus Powered Hub.
- v) No device can draw more than 500mA from the USB Bus.

7.2 Self Powered Configuration

A USB Self-Powered device gets its power from its own power supply and does not draw current from the USB bus.

The EVAL232R is not designed to be used in a USB self-powered configuration. However, the FT232R chip can be used in such a configuration. See the FT232R datasheet for more details on how to do this.

7.3 USB Bus Powered with Power Switching Configuration

USB Bus Powered circuits need to be able to power down in USB suspend mode in order to meet the $\leq 500\mu\text{A}$ total USB suspend current requirement (including external logic). Some external can power itself down into a low current state by monitoring the PWREN# signal. For external logic that cannot power itself down in this way the FT232R provides a simple but effective way of turning off power to external circuitry during USB suspend.

This can be done using a discrete P-Channel Logic Level MOSFET to control the power to external logic circuits. A suitable device would be an International Rectifier (www.irf.com) IRLML6402, or equivalent. It is recommended that a "soft start" circuit consisting of a 1kΩ series resistor and a 0.1µF capacitor are used to limit the current surge when the MOSFET turns on. Without the soft start circuit there is a danger that the transient power surge of the MOSFET turning on will reset the FT232R, or the USB host / hub controller. The values used here allow attached circuitry to power up with a slew rate of $\sim 12.5\text{V}$ per millisecond, in other words the output voltage will transition from GND to 5V in approximately 400 microseconds.

Alternatively, a dedicated power switch I.C. with inbuilt "soft-start" can be used instead of a MOSFET. A suitable power switch I.C. for such an application would be a Micrel MIC2025-2BM or equivalent.

Please note the following points in connection with power controlled designs:

- i) The logic to be controlled must have its own reset circuitry so that it will automatically reset itself when power is applied on coming out of suspend.
- ii) Set the Pull-down on Suspend option in the internal EEPROM.
- iii) One of the CBUS Pins should be configured as PWE# in the internal EEPROM, and should be used to switch the power supply to the external circuitry.
- iv) For USB high-power bus powered device (one that consumes greater than 100mA, and up to 500mA of current from the USB bus), the power consumption of the device should be set in the max power field in the internal EEPROM. A high-power bus powered device must use this descriptor in the internal EEPROM to inform the system of its power requirements.
- v) For 3.3V power controlled circuits the FT232R's VCCIO pin must not be powered down with the external circuitry (the PWREN# signal gets its VCC supply from VCCIO). Either connects the power

switch between the output of the 3.3V regulator and the external 3.3V logic or power VCCIO from the 3V3OUT pin of the FT232R.

7.4 LED Interface

The FT232RL's CBUS0 and CBUS1 pins on the EVAL232R are configured to drive LED's.

CBUS0 is used to indicate reception of data (RXLED#) and CBUS1 is used to indicate transmission of data (TXLED#). When data is being transmitted or received the respective CBUS pin will drive from tristate to low in order to provide indication on the LEDs of data transfer. A digital one-shot time is used so that even a small percentage of data transfer is visible to the end user.

The FT232R CBUS pins have 3 configurable options for driving an LED - these are TXLED#, RXLED#, and TX&RXLED#.

8 EVAL232R Module Circuit Schematic

Figure 8.1 shows the EVAL232R circuit schematic. For the EVAL232R the FT232RL has been used to make a USB to RS232 converter. A TTL – RS232 Level Converter I.C. is used on the serial UART of the FT232RL to make the RS232 level conversion. This, for example can be done using the popular “213” series of TTL to RS232 level converters. These devices have 4 transmitters and 5 receivers in a 28-LD SSOP package and feature an in-built voltage converter to convert the 5V (nominal) VCC to the +/- 9 volts required by RS232. An important feature of these devices is the SD pin which can power down the device to a low quiescent current during USB suspend mode.

The RS232 level converter device used on the EVAL232R is a Zywyn ZT213LFEA which is capable of RS232 communication at up to 1Megabaud baud.

In the EVAL232R CBUS0 and CBUS1 have been configured as TXLED# and RXLED#, and are being used to drive two LEDs which indicate transmission and reception of data.

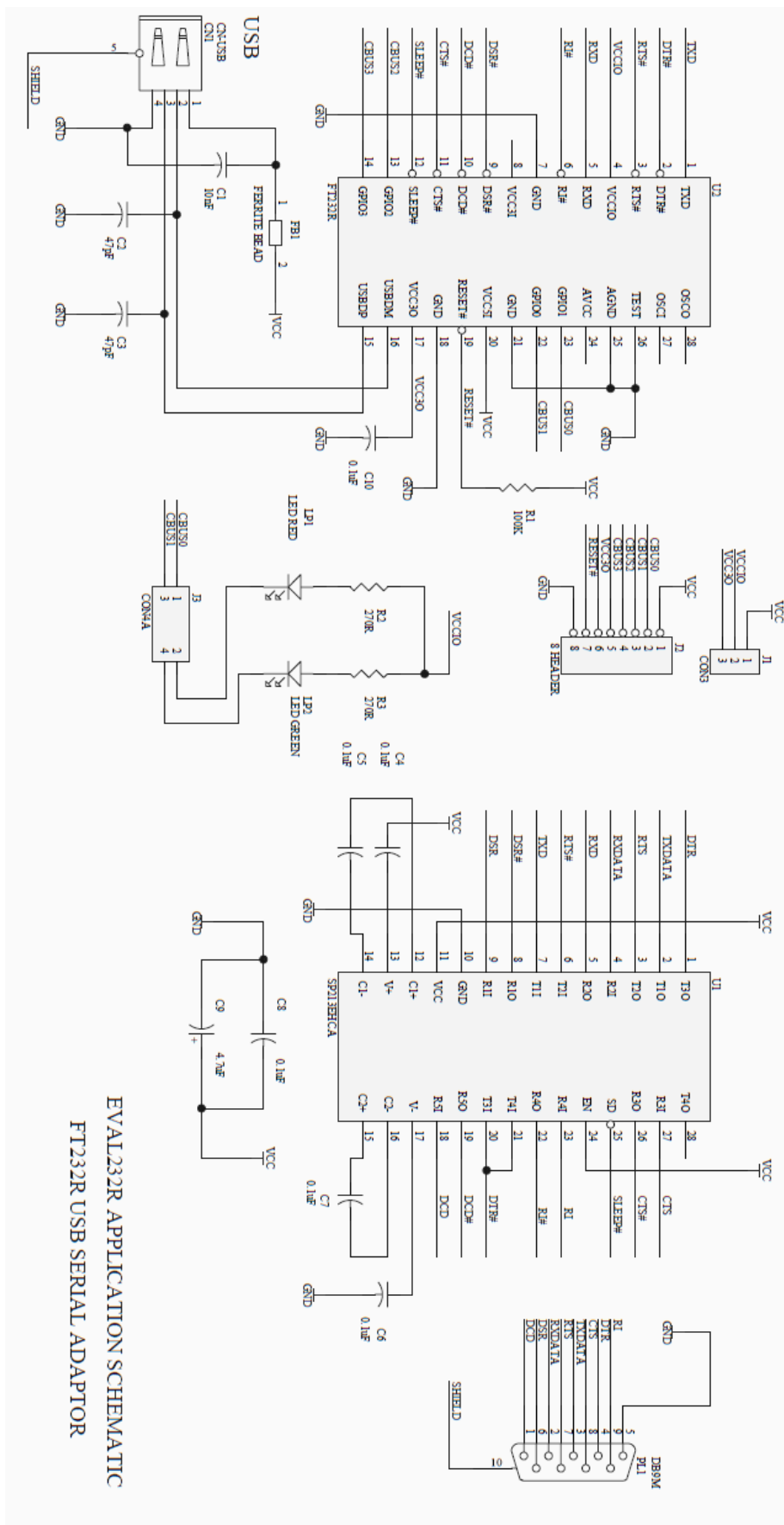


Figure 8.1 Module Circuit Schematic

9 Internal EEPROM Configuration

Following a power-on reset or a USB reset the FT232R will scan its internal EEPROM and read the USB configuration descriptors stored there. The default values programmed into the internal EEPROM in the FT232RQ used on the EVAL232R are shown in Table 9.1.

| Parameter | Value | Notes |
|-----------------------------------|---------------------------------|--|
| USB Vendor ID (VID) | 0403h | FTDI default VID (hex) |
| USB Product UD (PID) | 6001h | FTDI default PID (hex) |
| Serial Number Enabled? | Yes | |
| Serial Number | See Note | A unique serial number is generated and programmed into the EEPROM during final test of the EVAL232R module. |
| Pull down I/O Pins in USB Suspend | Disabled | Enabling this option will make the device pull down on the UART interface lines when the power is shut off (PWREN# is high). |
| Manufacturer Name | FTDI | |
| Product Description | EVAL232 Board USB <-> Serial | |
| Max Bus Power Current | 100mA | |
| Power Source | Bus Powered | |
| Device Type | FT232R | |
| USB Version | 0200 | Returns USB 2.0 device description to the host. Note: The device is be a USB 2.0 Full Speed device (12Mb/s) as opposed to a USB 2.0 High Speed device (480Mb/s). |
| Remote Wake Up | Enabled | Taking RI# low will wake up the USB host controller from suspend. |
| High Current I/Os | Disabled | Enables the high drive level on the UART and CBUS I/O pins. |
| Load VCP Driver | Enabled | Makes the device load the CVP driver interface for the device. |
| CBUS0 | RXLED# | Default configuration of CBUS0 – Receive LED drive. |
| CBUS1 | TXLED# | Default configuration of CBUS1 – Transmit LED drive. |
| CBUS2 | PWREN# | Default configuration of CBUS2 – Power enable. Low after USB enumeration, high during USB suspend. |
| CBUS3 | PWREN# | Default configuration of CBUS3 – Power enable. Low after USB enumeration, high during USB suspend. |
| CBUS4 | SLEEP# | Default configurations of CBUS4 – Low during USB suspend. |
| Invert TXD | Disabled | Signal on this pin becomes TXD# if enable. |
| Invert RXD | Disabled | Signal on this pin becomes RXD# if enable. |
| Invert RTS# | Disabled | Signal on this pin becomes RTS if enable. |
| Invert CTS# | Disabled | Signal on this pin becomes CTS if enable. |
| Invert DTR# | Disabled | Signal on this pin becomes DTR if enable. |
| Invert DSR# | Disabled | Signal on this pin becomes DSR if enable. |

| Parameter | Value | Notes |
|-------------|----------|---|
| Invert DCD# | Disabled | Signal on this pin becomes DCD if enable. |
| Invert RI# | Disabled | Signal on this pin becomes RI if enable. |

Table 9.1 Default Internal EEPROM Configuration

The internal EEPROM in the FT232R can be programmed over USB using the utility program [FT_PROG](#). FT_PROG can be downloaded from the www.ftdichip.com. Users who do not have their own USB vendor ID but who would like to use a unique Product ID in their design can apply to FTDI for a free block of unique PIDs. Contact [FTDI Support](#) for this service.

10 Contact Information

Head Office – Glasgow, UK

Future Technology Devices International Limited
Unit 1, 2 Seaward Place, Centurion Business Park
Glasgow G41 1HH
United Kingdom
Tel: +44 (0) 141 429 2777
Fax: +44 (0) 141 429 2758

E-mail (Sales) sales1@ftdichip.com
E-mail (Support) support1@ftdichip.com
E-mail (General Enquiries) admin1@ftdichip.com

Branch Office – Tigard, Oregon, USA

Future Technology Devices International Limited
(USA)
7130 SW Fir Loop
Tigard, OR 97223-8160
USA
Tel: +1 (503) 547 0988
Fax: +1 (503) 547 0987

E-Mail (Sales) us.sales@ftdichip.com
E-Mail (Support) us.support@ftdichip.com
E-Mail (General Enquiries) us.admin@ftdichip.com

Branch Office – Taipei, Taiwan

Future Technology Devices International Limited
(Taiwan)
2F, No. 516, Sec. 1, NeiHu Road
Taipei 114
Taiwan, R.O.C.
Tel: +886 (0) 2 8797 1330
Fax: +886 (0) 2 8751 9737

E-mail (Sales) tw.sales1@ftdichip.com
E-mail (Support) tw.support1@ftdichip.com
E-mail (General Enquiries) tw.admin1@ftdichip.com

Branch Office – Shanghai, China

Future Technology Devices International Limited
(China)
Room 1103, No. 666 West Huaihai Road,
Shanghai, 200052
China
Tel: +86 21 62351596
Fax: +86 21 62351595

E-mail (Sales) cn.sales@ftdichip.com
E-mail (Support) cn.support@ftdichip.com
E-mail (General Enquiries) cn.admin@ftdichip.com

Web Site

<http://ftdichip.com>

System and equipment manufacturers and designers are responsible to ensure that their systems, and any Future Technology Devices International Ltd (FTDI) devices incorporated in their systems, meet all applicable safety, regulatory and system-level performance requirements. All application-related information in this document (including application descriptions, suggested FTDI devices and other materials) is provided for reference only. While FTDI has taken care to assure it is accurate, this information is subject to customer confirmation, and FTDI disclaims all liability for system designs and for any applications assistance provided by FTDI. Use of FTDI devices in life support and/or safety applications is entirely at the user's risk, and the user agrees to defend, indemnify and hold harmless FTDI from any and all damages, claims, suits or expense resulting from such use. This document is subject to change without notice. No freedom to use patents or other intellectual property rights is implied by the publication of this document. Neither the whole nor any part of the information contained in, or the product described in this document, may be adapted or reproduced in any material or electronic form without the prior written consent of the copyright holder. Future Technology Devices International Ltd, Unit 1, 2 Seaward Place, Centurion Business Park, Glasgow G41 1HH, United Kingdom. Scotland Registered Company Number: SC136640

Appendix A – References

Document References

[FT232R](#) Product Page

[AN232R-01](#) Bit Bang Modes for the FT232R and FT245R

[AN232R-02](#) FTDIChip-ID for the FT232R and FT245R

[AN_107](#) Advanced Driver Options

[AN_120](#) Aliasing VCP Baud Rates

[AN_121](#) Accessing the EEPROM User Area of FTDI Devices

[FT_PROG](#) Utility

Acronyms and Abbreviations

| Terms | Description |
|--------|---|
| EHCI | Enhanced Host Controller Interface |
| EEPROM | Electrically Erasable Programmable Read Only Memory |
| FPGA | Field Programmable Gate Array |
| LED | Light Emitting Diode |
| MCU | Micro Controller Unit |
| OHCI | Open Host Controller Interface |
| PCB | Printed Circuit Board |
| PLD | Programmable Logic Device |
| TTL | Transistor Transistor Logic |
| USB | Universal Serial Bus |
| UART | Universal Asynchronous Receiver / Transmitter |
| UHCI | Universal Host Controller Interface |
| VCP | Virtual COM Port |

Appendix B – List of Tables and Figures

List of Tables

| | |
|---|----|
| Table 4.1 Module Pin Out Description for Jumper J1 | 11 |
| Table 4.2 Module Pin Out Description for 8 Pin Header J2..... | 11 |
| Table 4.3 Module Pin Out Description for Jumper J3 | 12 |
| Table 4.4 CBUS Signal Options | 13 |
| Table 4.5 RS232 Signal Descriptions | 13 |
| Table 6.1 Absolute Maximum Ratings | 15 |
| Table 6.2 Operating Voltage and Current | 15 |
| Table 6.3 FT232R UART and CBUS I/O Pin Characteristics (VCCIO = 5.0V, Standard Drive Level) | 15 |
| Table 6.4 FT232R UART and CBUS I/O Pin Characteristics (VCCIO = 3.3V, Standard Drive Level) | 16 |
| Table 6.5 FT232R UART and CBUS I/O Pin Characteristics (VCCIO = 2.8V, Standard Drive Level) | 16 |
| Table 6.6 FT232R UART and CBUS I/O Pin Characteristics (VCCIO = 5.0V, High Drive Level) | 16 |
| Table 6.7 FT232R UART and CBUS I/O Pin Characteristics (VCCIO = 3.3V, High Drive Level) | 16 |
| Table 6.8 FT232R UART and CBUS I/O Pin Characteristics (VCCIO = 2.8V, High Drive Level) | 16 |
| Table 6.9 FT232R RESET# and TEST Pin Characteristics | 16 |
| Table 6.10 FT232R USB I/O Pin (USB DP, USB DM) Characteristics | 17 |
| Table 6.11 EEPROM Characteristics | 17 |
| Table 6.12 Internal Clock Characteristics | 17 |
| Table 9.1 Default Internal EEPROM Configuration..... | 23 |

List of Figures

| | |
|---|----|
| Figure 1.1 – EVAL232R FT232RL USB to RS232 Evaluation Module..... | 4 |
| Figure 4.1 Module Pin Out..... | 10 |
| Figure 4.2 EVAL232R RS232 (DB9) Pin Out..... | 10 |
| Figure 5.1 EVAL232R Module Dimensions..... | 14 |
| Figure 8.1 Module Circuit Schematic..... | 21 |

Appendix C – Revision History

Document Title: EVAL232R FT232RL USB to RS232 Evaluation Module Datasheet
Document Reference No.: FT_001424
Clearance No.: FTDI#544
Product Page: <http://www.ftdichip.com/FTProducts.htm>
Document Feedback: [Send Feedback](#)

| Revision | Changes | Date |
|-------------|--|---------------|
| Version 0.9 | Initial Datasheet Created | December 2005 |
| Version 1.0 | New template applied. Changes made to bitbang WR# strobe CBUS availability. Driver support list updated. | 2018-07-02 |

Mouser Electronics

Authorized Distributor

Click to View Pricing, Inventory, Delivery & Lifecycle Information:

[FTDI:](#)
[EVAL232R](#)