

Han 300A PE axial module 95-120mm² male

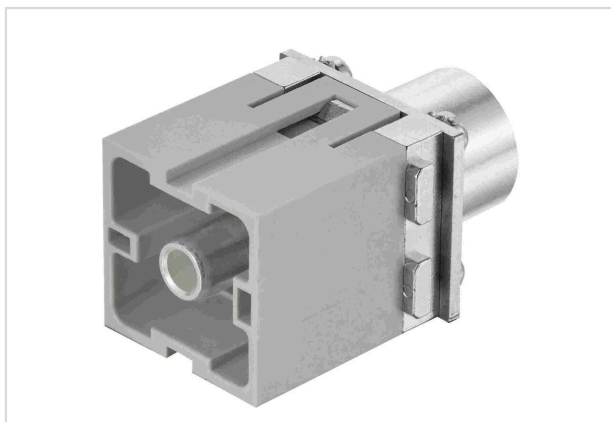


Image is for illustration purposes only. Please refer to product description.

| | |
|--------------------|---|
| Part number | 09 14 001 2681 |
| Specification | Han 300A PE axial module 95-120mm ² male |
| HARTING eCatalogue | https://harting.com/09140012681 |

Identification

| | |
|--------------------|----------------------|
| Category | Modules |
| Series | Han-Modular® |
| Type of module | Han® 300 A PE module |
| Size of the module | Double module |

Version

| | |
|--------------------|-------------------------|
| Termination method | Axial screw termination |
| Gender | Male |
| Number of contacts | 1 |

Technical characteristics

| | |
|-------------------------|---|
| Conductor cross-section | 95 ... 120 mm ² |
| Wire outer diameter | ≤29 mm |
| Insulation resistance | >10 ¹⁰ Ω |
| Contact resistance | ≤0.2 mΩ |
| Stripping length | 19 ... 20 mm |
| Tightening torque | 14 Nm @ 95 mm ² 16 Nm @ 120 mm ² |
| Limiting temperature | -40 ... +125 °C |
| Mating cycles | ≥500 |

Material properties

| | |
|-------------------|--------------------|
| Material (insert) | Polycarbonate (PC) |
|-------------------|--------------------|



Pushing Performance
Since 1945

Material properties

| | |
|---|--|
| Colour (insert) | RAL 7032 (pebble grey) |
| Material (contacts) | Copper alloy |
| Surface (contacts) | Silver plated |
| Material flammability class acc. to UL 94 | V-0 |
| RoHS | compliant with exemption |
| RoHS exemptions | 6(c): Copper alloy containing up to 4 % lead by weight |
| ELV status | compliant with exemption |
| China RoHS | 50 |
| REACH Annex XVII substances | Not contained |
| REACH ANNEX XIV substances | Not contained |
| REACH SVHC substances | Yes |
| REACH SVHC substances | Lead |
| ECHA SCIP number | 5dbb3851-b94e-4e88-97a1-571845975242 |
| California Proposition 65 substances | Yes |
| California Proposition 65 substances | Lead |
| Fire protection on railway vehicles | EN 45545-2 (2020-08) |
| Requirement set with Hazard Levels | R22 (HL 1-3) R23 (HL 1-3) |

Specifications and approvals

| | |
|----------------|--------------------------|
| Specifications | IEC 60664-1 IEC 61984 |
|----------------|--------------------------|

Commercial data

| | |
|--------------------------------|---|
| Packaging size | 1 |
| Net weight | 94 g |
| Country of origin | Romania |
| European customs tariff number | 85389099 |
| GTIN | 5713140184497 |
| ETIM | EC000438 |
| eCl@ss | 27440217 Module for industrial connectors (power/signals) |

Mouser Electronics

Authorized Distributor

Click to View Pricing, Inventory, Delivery & Lifecycle Information:

[HARTING:](#)

[09140012681](#)