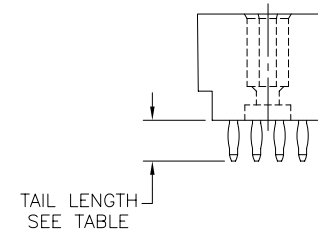
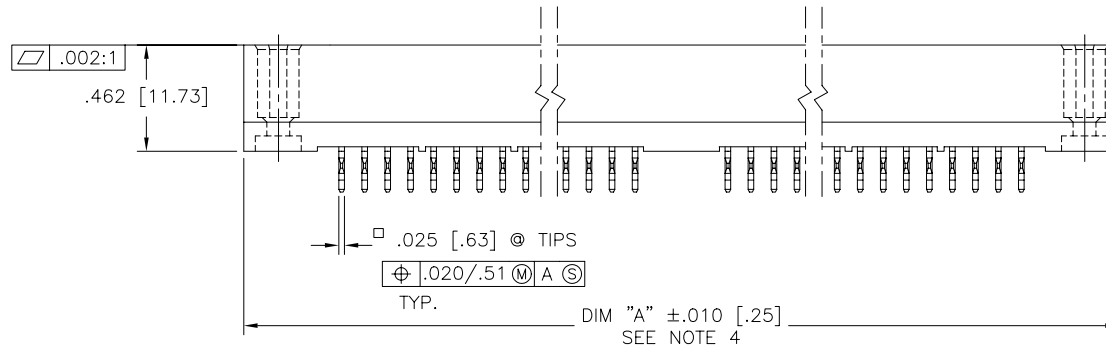
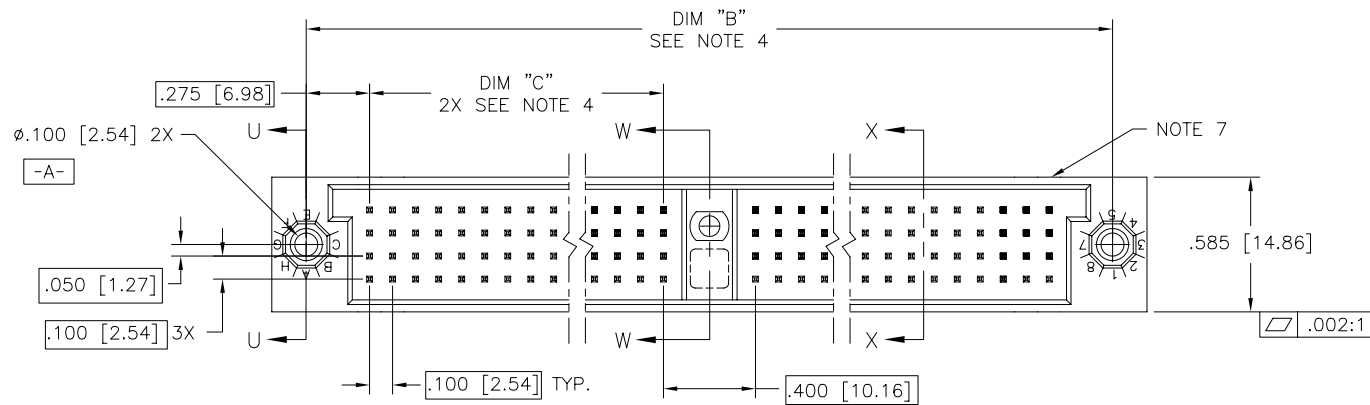




FCIconnect.com

Copyright FCI

PRODUCT NUMBER
SEE NOTE 1



mat'l. code NOTE 3				surface ISO 1302 ✓		tolerance ISO 406 ISO 1101	projection INCH/MM scale 1:1	product family HPC	
ltr	ecn	nol	dr	date	tolerances unless otherwise specified			title 4 ROW VERTICAL HEADER W/PRESS FIT PINS, 1 G.P.	
E	v40285	PCP		1/20/94	angles	linear		dwg no 50010	
F	v40941	PCP		6/01/94				sheet 1 of 4 size A3	
G	v82253	HTB		12/28/98	$\sigma \pm 2'$			type Product Customer Drawing	
H	v00271	JWS		1/31/00	dr	D. SHEAFFER	3/14/91		
J	v05-0758	DAI		9/12/05	enr	S. CLARK	3/14/91		
K	v05-1039	DAI		11/11/05	chr	S. CLARK	3/14/91		
L	M06-0261	AEA		7/08/06	appd	S. CLARK	3/14/91		
sheet	revision	L	L	L	L	L			
index	sheet	1	2	3	4				

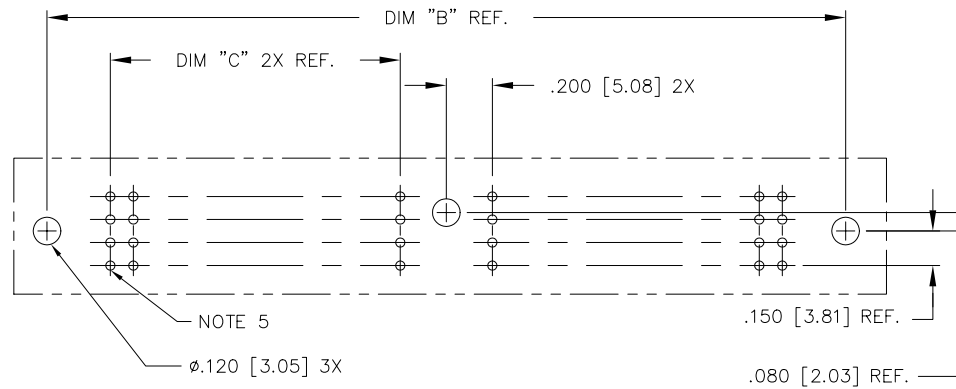
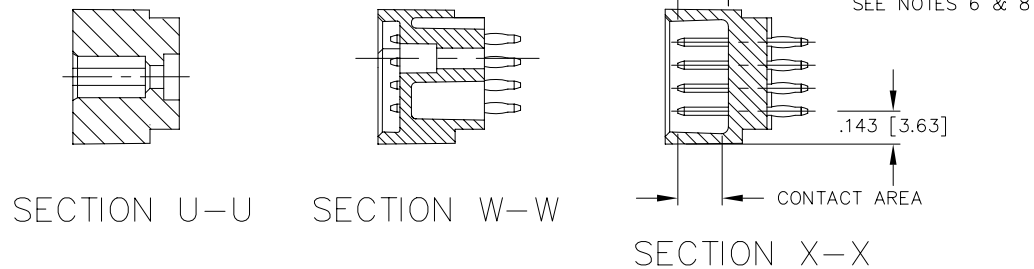
form: A3



FCIconnect.com

Copyright FCI

PRODUCT NUMBER
SEE NOTE 1



RECOMMENDED PCB LAYOUT
(ALL HOLES LOCATED ON .100/2.54 GRID
UNLESS OTHERWISE SPECIFIED)

mat'l. code NOTE 3				surface ISO 1302 ✓	tolerance ISO 406 ISO 1101	projection INCH/MM	product family HPC
ltr	ecn	no	dr	date	tolerances unless otherwise specified	scale 1:1 FCI	title 4 ROW VERTICAL HEADER W/PRESS FIT PINS, 1 G.P.
L					angles linear .XX ±.01/.3		
					.XXX ±.005/.13		
					0°±2' .XXX ±.0020/.051		
			dr	D. SHEAFFER	3/14/91		dwg no
			enr	S. CLARK	3/14/91		sheet 2 of 4 size
			chr	S. CLARK	3/14/91		50010 A3
			appd	S. CLARK	3/14/91		type Product Customer Drawing
sheet index	revision sheet						

form: A3

PRODUCT NUMBER
SEE NOTE 1

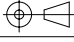

50010-XX009 AND 50010-XX09LF ONLY

D C B A	1				5				10				15				20				25				30				35				40				45 46		GUIDE			
	B	C			B				B				B				B				B				B				B			C	B									
	B				B				B				B				B				B				B				B				B									
	B				B				B				B				B				B				B				B				B									
PIN 1																																										
47				50				55				60				65				70				75				80				85				90				92		
B	C			B				B				B				B				B				B				B			C	B										
B				B				B				B				B				B				B				B					B									
B				B				B				B				B				B				B				B					B									
B				B				B				B				B				B				B				B					B									

NOTES FOR -XX009 AND -XX009LF ONLY:

1. ALL POSITIONS ARE LOADED WITH "A" EXCEPT WHERE NOTED.
2. COLUMN 1, ROW A IS DESIGNATED AS SIGNAL PIN 1, AS VIEWED FROM THE MATING FACE.
3. SIGNAL DATA FOR 50010-XX009 AND 50010-XX009LF:
SIZE: 4 X 92
TOTAL NUMBER OF POSITIONS LOADED: 368

ITEM KEY	QTY.	MATING LENGTH	TAIL LENGTH
A	236	.230 / 5.84	.177 / 4.50
B	128	.270 / 6.86	.177 / 4.50
C	4	.190 / 4.83	.177 / 4.50

mat'l. code NOTE 3				surface ISO 1302 ✓		tolerance ISO 406 ISO 1101		projection 		product family HPC			
ltr	ecr	no	dr	date	tolerances unless otherwise specified				INCH/MM scale 1:1 	title			
L					angles	linear	.XX ±.01/.3			4 ROW VERTICAL HEADER W/PRESS FIT PINS, 1 G.P.			
							.XXX ±.005/.13						
					0°±2°		.XXXX ±.0020/.051						
				dr	D. SHEAFFER		3/14/91		dwg no		sheet 3 of 4		size
				enr	S. CLARK		3/14/91		50010				A3
				chr	S. CLARK		3/14/91						
				appd	S. CLARK		3/14/91		type		Product Customer		Drawing
sheet index		revision sheet											

PRODUCT NO.	NO. OF POSITIONS SEE NOTE 2	TAIL LENGTH ±.015/0.38	TERMINAL PLATING	MATING LENGTH
50010 -1YYA	YYY	.177/4.50	30μ"/0.76μ GOLD	.220[5.59]
50010 -1YYC	YYY	.533/13.54	30μ"/0.76μ GOLD	
50010 -1YYD	YYY	.733/18.62	30μ"/0.76μ GOLD	
50010 -1YYG	YYY	.250/6.35	30μ"/0.76μ GOLD	
50010 -1YYL	YYY	.188/4.78	30μ"/0.76μ GOLD	
50010 -1YYP	YYY	.470/11.94	30μ"/0.76μ GOLD	
50010 -3YYA	YYY	.177/4.50	50μ"/1.27μ GOLD	
50010 -3YYC	YYY	.533/13.54	50μ"/1.27μ GOLD	
50010 -3YYD	YYY	.733/18.62	50μ"/1.27μ GOLD	
50010 -3YYG	YYY	.250/6.35	50μ"/1.27μ GOLD	
50010 -3YYL	YYY	.188/4.78	50μ"/1.27μ GOLD	
50010 -3YYY	YYY	.470/11.94	50μ"/1.27μ GOLD	
50010 -5YYA	YYY	.177/4.50	30μ"/0.76μ GXT	
50010 -5YYALF	YYY	.177/4.50	30μ"/0.76μ GXT	
50010 -5YYC	YYY	.533/13.54	30μ"/0.76μ GXT	
50010 -5YYCLF	YYY	.533/13.54	30μ"/0.76μ GXT	
50010 -5YYD	YYY	.733/18.62	30μ"/0.76μ GXT	
50010 -5YYDLF	YYY	.733/18.62	30μ"/0.76μ GXT	
50010 -5YYG	YYY	.250/6.35	30μ"/0.76μ GXT	
50010 -5YYGLF	YYY	.250/6.35	30μ"/0.76μ GXT	
50010 -5YYL	YYY	.188/4.78	30μ"/0.76μ GXT	
50010 -5YYLLF	YYY	.188/4.78	30μ"/0.76μ GXT	
50010 -5YYY	YYY	.470/11.94	30μ"/0.76μ GXT	
50010 -5YYYPLF	YYY	.470/11.94	30μ"/0.76μ GXT	.220[5.59]
50010 -XX009	368	SEE SHEET 3	30μ"/0.76μ GXT	SEE SHEET 3
50010 -XX009LF	368	SEE SHEET 3	30μ"/0.76μ GXT	SEE SHEET 3

NOTES:

①. PRODUCT NUMBERING CODE:

50010 - X YYY Z LF

LEAD FREE (OPTIONAL), SEE NOTE 9
TAIL LENGTH, SEE TABLE
NO. OF POSITIONS, SEE NOTE 2
PLATING, SEE TABLE
BASE NUMBER

PRODUCT NUMBERING CODE FOR SELECT LOAD:

50010 - XXYYY LF

LEAD FREE (OPTIONAL) SEE NOTE 9
SEQUENCE NUMBER
ALWAYS 'XX'
BASE NUMBER

②. THIS PRODUCT IS CONFIGURED IN SIZES OF 20 thru 122 COLUMNS IN INCREMENTS OF TWO.
i.e.: 20,22,24,26,.....118,120,122.

③. HOUSING MATERIAL: GLASS AND MINERAL FILLED
HIGH TEMP. THERMOPLASTIC. FLAME RETARDANT PER
UL94V-0. COLOR: BLACK.
PIN MATERIAL: PHOS BRONZE

④. LENGTH FORMULAS
DIM "A" .100/2.54 x NO. OF COLUMNS +1.05/26.7
DIM "B" .100/2.54 x NO. OF COLUMNS +.750/19.05
DIM "C" .100/2.54 x NO. OF COLUMNS DIVIDED BY 2 -.100/2.54

⑤. Ø.0453/1.151 DRILLED HOLE PLATED WITH .0003/.007 MIN.
SnPb OVER .001/.03 to .003/.08 Cu. PLATING TO ACHIEVE
A Ø.040±.003/1.02±.08 HOLE.

⑥. TO ASSURE PROPER INSTALLATION: TOOLING, AS
SPECIFIED IN INSTRUCTION MANUAL 155915-001 MUST
BE USED. PIN MATING LENGTH WILL BE ±.002/.05
AFTER INSTALLATION.

⑦. COMPANY NAME, PART NUMBER AND LOT CODE TO APPEAR ON
THIS SURFACE PER BUS-12-108.

⑧. REFERENCE 50808 FOR F.M.L.B. AVAILABLE OPTIONS
AND WORKSHEET.

⑨. THIS PRODUCT (WITH "LF" SUFFIX) MEETS EUROPEAN UNION
DIRECTIVES AND OTHER COUNTRY REGULATIONS AS DESCRIBED IN GS-22-008.

10. THIS HOUSING WILL WITHSTAND EXPOSURE TO 260° C PEAK TEMPERATURE
FOR 10-30 SECONDS IN A CONVECTION, INFRA-RED OR VAPOR PHASE REFLOW OVEN.

mat'l. code NOTE 3				surface ISO 1302 ✓		tolerance ISO 406 ISO 1101		projection INCH/MM		product family HPC	
ltr	ecn	no	dr	date	tolerances unless otherwise specified			title		4 ROW VERTICAL HEADER	
L					angles	linear	.XX ±.01/.3	INCH/MM		W/PRESS FIT PINS, 1 G.P.	
					0°±2°		.XXX ±.005/.13	scale 1:1		dwg no	
					dr	D. SHEAFFER	3/14/91	FCI		sheet 4 of 4 size	
					enrg	S. CLARK	3/14/91			50010 A3	
					chr	S. CLARK	3/14/91			type	
					appd	S. CLARK	3/14/91			Product Customer Drawing	
sheet index	revision	sheet									

Mouser Electronics

Authorized Distributor

Click to View Pricing, Inventory, Delivery & Lifecycle Information:

[FCI / Amphenol:](#)

[50010-5344CLF](#) [50010-XX009](#) [50010-XX009LF](#)