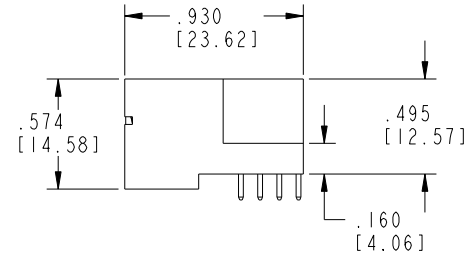
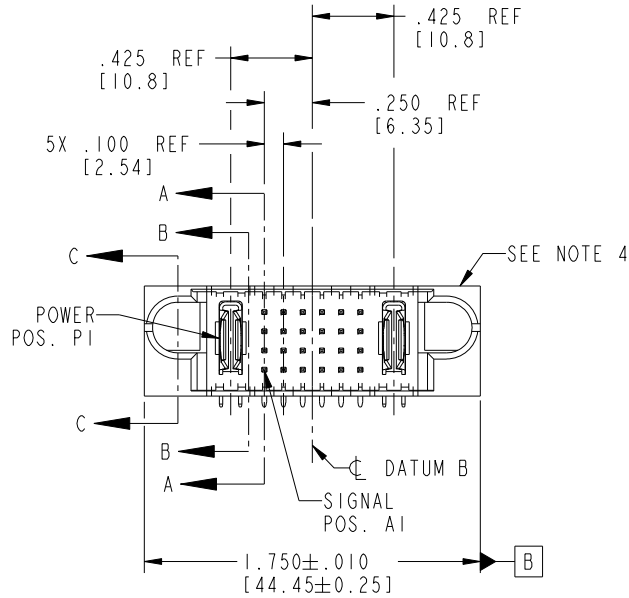
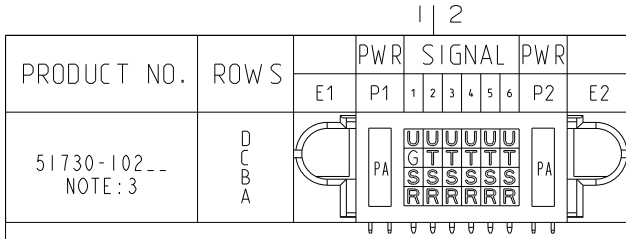


Tous droits strictement réservés. Reproduction ou communication a des tiers interdite sous quelque forme que ce soit sans autorisation écrite du propriétaire. Propriété de c FCI. Droits de reproduction FCI.

All rights strictly reserved. Reproduction or issue to third parties in any form whatever is not permitted without written authority from the proprietor. Property of FCI. Copyright FCI.



CODE	DIM "M" MATING LENGTH	CONTACT TYPE
G	.220 [5.59]	SIGNAL
R	.270 [6.86]	SIGNAL
S	.270 [6.86]	SIGNAL
T	.270 [6.86]	SIGNAL
U	.270 [6.86]	SIGNAL
PA	N/A [N/A]	POWER

mat'l code				SEE NOTE 2		tolerances unless otherwise specified		CUSTOMER		FCI www.fciconnect.com	
ltr	ecn no.	dr	date	linear	.XX±.01/0.X±0.3	projection		COPY			
A	V04-0880	TAB	09/01/04		.XXX±.005/0.XX±0.13	INCH/MM		title IP + 24S + IP			
B	DG05-0463	CS	11/14/05	angles	.XXX±.0020/0.XXX±0.051	scale		RIGHT ANGLE SOLDER HEADER			
C	DG08-0237	W D	09/01/08		0°±2°	1:1		product family		PwrBlade	
D	DG08-0272	W D	09/25/08	dr	T. BRUNGARD 09/01/04			size		213	
				engr	M. GRAY 09/01/04			dwg no		1 of 4	
				chr	M. GRAY 09/01/04			A		51730-102	
				appd	M. GRAY 09/01/04			cage code		22526	
sheet index	revision sheet	D	D	D	D						
		1	2	3	4						

Pro/E

PDM: Rev: D

STATUS: Released

Printed: Dec 20, 2010

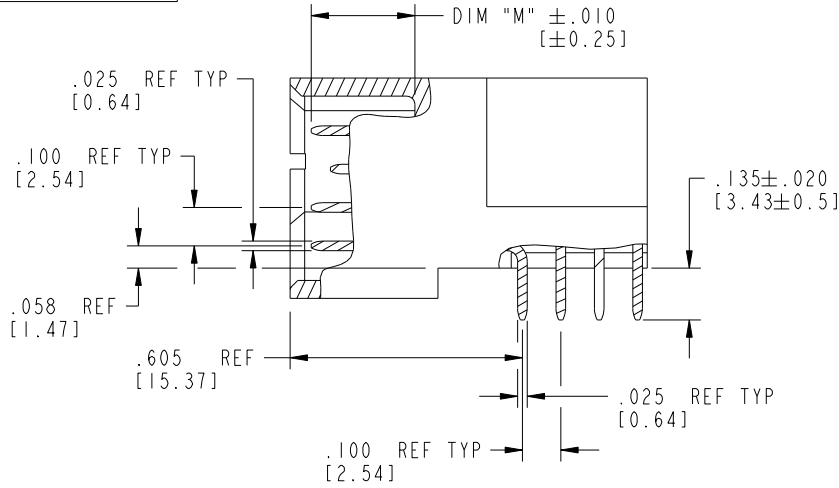
Tous droits strictement réservés. Reproduction ou communication a des tiers interdite sous quelque forme que ce soit sans autorisation écrite du propriétaire. Propriete de c FCI. Droits de reproduction FCI.

All rights strictly reserved. Reproduction or issue to third parties in any form whatever is not permitted without written authority from the proprietor. Property of FCI. Copyright FCI.

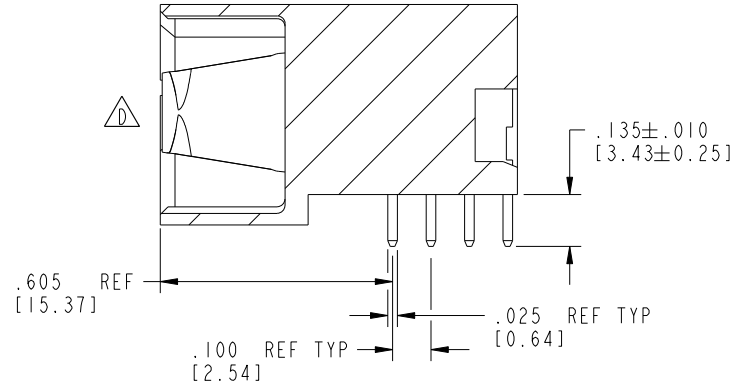


PRODUCT NUMBER

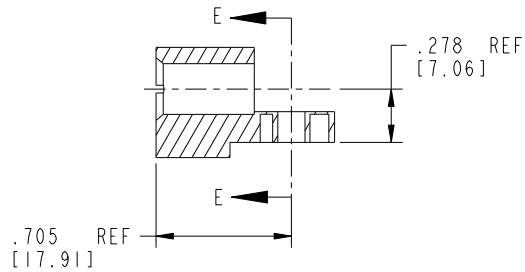
51730-102--
NOTE:3



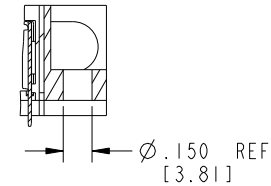
BROKEN-OUT SECTION A-A
SCALE 2:1



SECTION B-B
SCALE 2:1



SECTION C-C



PARTIAL SECTION E-E

mat'l code		SEE NOTE 2		tolerances unless otherwise specified		CUSTOMER		 www.fciconnect.com	
lir	ecn no.	dr	date	linear	.XX $\pm .01/0.X \pm 0.3$	COPY		title	
D					.XXY $\pm .005/0.XX \pm 0.13$	projection		IP + 24S + IP	
				angles	.XXX $\pm .0020/0.XXX \pm 0.051$			RIGHT ANGLE SOLDER HEADER	
					$0^\circ \pm 2^\circ$	INCH/MM		product family	
				dr	T. BRUNGARD 09/01/04	scale		PwrBlade	
				enr	M. GRAY 09/01/04	1:1		code	
				chr	M. GRAY 09/01/04			size	
				appd	M. GRAY 09/01/04			dwg no	
sheet index		revision sheet						A 51730-102	
								213	
								sheet	
								2 of 4	

cage code 28516

STAT: Released Printed: Dec 20, 2010

Pro/E

PDM: Rev:D



1 | 2

3

4

PRODUCT NUMBER
51730-102--
NOTE: 3

NOTES:

1. DIMENSIONS AND TOLERANCES ARE IN ACCORDANCE WITH ASME Y14.5M, 1994 UNLESS OTHERWISE SPECIFIED.

CONNECTOR NOTES:

2. HOUSING MATERIAL: UL 94 V-0 GLASS FILLED HIGH-TEMP THERMOPLASTIC
POWER CONTACT MATERIAL: COPPER ALLOY
SIGNAL PIN MATERIAL: COPPER ALLOY

3. SEE ITEM 1 & 2 IN PRINT 10064183 FOR PLATING SPEC OF 51730-102 AND 51730-102LF RESPECTIVELY.

4. MANUFACTURER'S NAME, P/N, AND DATE CODE TO APPEAR ON THIS SURFACE.

5. PRODUCT SPECIFICATION GS-12-149.
APPLICATION SPECIFICATION BUS-20-067.

6. PACKAGED IN TRAYS.

PCB NOTES:

7. ALL HOLE DIAMETERS ARE FINISHED HOLE SIZE.

8. MOUNTING HOLES, WHERE APPLICABLE, ARE UNPLATED.

9. $\varnothing .0453 \pm .0010$ [1.151 \pm 0.025] DRILLED HOLES PLATED WITH .0003 [0.008] MIN SnPb OVER .001 [0.03] TO .003 [0.08] Cu PLATING TO ACHIEVE $\varnothing .040 \pm .003$ [1.02 \pm .07] HOLE.

10. "DIM XXX" TO BE DETERMINED BY THE CUSTOMER.

11. CONNECTOR KEEP-OUT ZONE.

12. A \triangle SYMBOL WILL BE NEXT TO ANY DIMENSION, VIEW, OR NOTE WHICH HAS BEEN MODIFIED WITH THE CURRENT DRAWING REVISION.

mat'l code				SEE NOTE 2		tolerances unless otherwise specified		CUSTOMER		FCI	
ltr	ecn no.	dr	date	linear	.XX±.01/0.X±0.3		COPY		www.fciconnect.com		
D					.XXY±.005/0.XX±0.13		projection		title IP + 24S + IP		
				angles	.XXX±.0020/0.XXX±0.051		INCH/MM		RIGHT ANGLE SOLDER HEADER		
					0° ± 2°		scale		product family PwrBlade code		
				dr	T. BRUNGARD	09/01/04	1:1		size		213
				enrg	M. GRAY	09/01/04	A		dwg no		sheet
				chr	M. GRAY	09/01/04	51730-102		4 of 4		
				appd	M. GRAY	09/01/04					
sheet index		revision sheet									

1 | 2

Pro/E

PDM: Rev:D

STATUS: Released

Printed: Dec 20, 2010

A

A

B

B

cage code 22526

4

Mouser Electronics

Authorized Distributor

Click to View Pricing, Inventory, Delivery & Lifecycle Information:

[FCI / Amphenol:](#)

[51730-102](#) [51730-102LF](#)