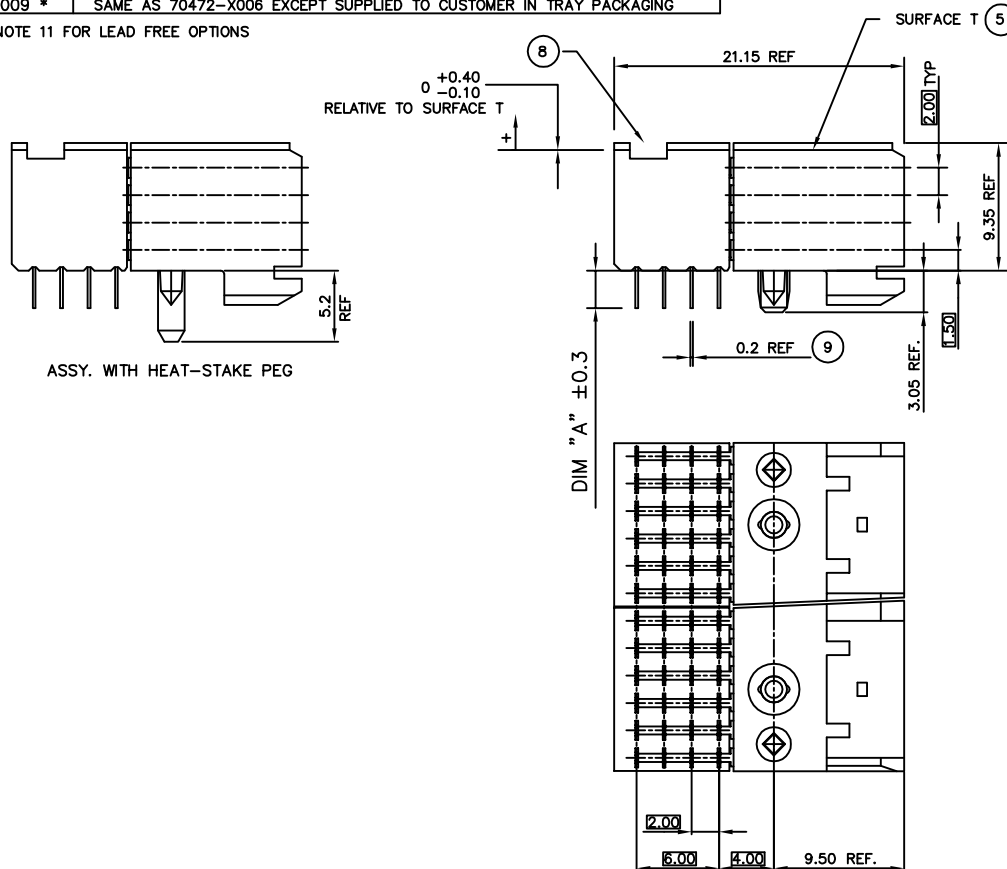


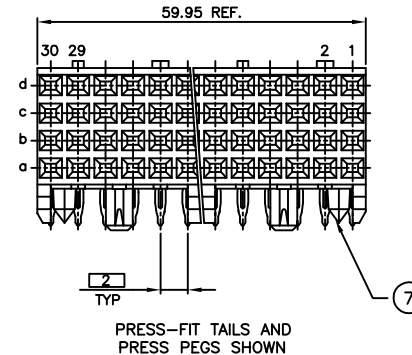


PRODUCT NUMBER	PEG TYPE	TAIL TYPE	TAIL LGTH. DIM "A"	PCB THICKNESS ±0.20	LOADING CONFIGURATION
70472-X001 *	PRESS	PRESS-FIT	2.90	1.6	FULLY LOADED
70472-X002 *	PRESS	PRESS-FIT	3.53	2.4	
70472-X003 *	HEAT-STAKE	PRESS-FIT	2.90	1.6	
70472-X004 *	HEAT-STAKE	PRESS-FIT	3.53	2.4	
70472-X005 *	PRESS	SOLDER	2.90	1.6	
70472-X006 *	PRESS	SOLDER	3.53	2.4	
70472-X007 *	HEAT-STAKE	SOLDER	2.90	1.6	
70472-X008 *	HEAT-STAKE	SOLDER	3.53	2.4	
70472-X009 *	SAME AS 70472-X006 EXCEPT SUPPLIED TO CUSTOMER IN TRAY PACKAGING				

* SEE NOTE 11 FOR LEAD FREE OPTIONS



PLATING CONTACT AREA:	
DASH NR:	PERFORMANCE LEVEL
-1YYY/1YYLF	TELCORDIA CO
-2YYY/2YYLF	CUSTOMER SPECIAL
-3YYY/3YYLF	CUSTOMER SPECIAL



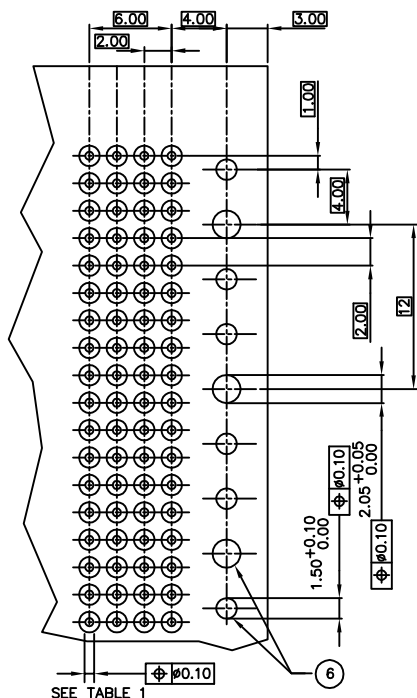
mat'l. code				tolerances unless otherwise specified		CUSTOMER COPY	FCI	
NOTE 1							www.fciconnect.com	
ltr	ecn no	dr	date	linear	.X±.3	projection	title	
L	DG07-0173	Cenh	6/05/07		.XX±.13			
M	DG08-0171	TER	8/26/08		.XXX±.051			
N	DG09-0068	Cenh	06/06/09	angles	0°±2°	MM	product family METRAL (tm)	
P	DG11-0110	QinDF	11/06/13	dr	T. BRUNGARD	2/12/03		
				enrg	M. GRAY	2/12/03		
J	V03-0721	DAI	08/18/03	chr	M. GRAY	2/12/03	size	
K	V05-1012	JRV	11/3/05	appd	M. GRAY	2/12/03		
sheet	revision	P	P					
index	sheet	1	2				A	
							70472	
							213	
							1 of 2	

cage code 22526



TABLE 1	
PLATED THRU HOLE REQUIREMENTS	
HOLE DIAMETER AFTER PLATING	0.65-0.80
DRILLED HOLE	0.81-0.86 (0.85 DRILL)
COPPER PLATING	0.025 - 0.05
SnPb PLATING	0.005-0.015

SEE DRAWING 58351
FOR OTHER OPTIONS



RECOMMENDED PC BOARD LAYOUT,
COMPONENT SIDE.

NOTES:

- CONNECTOR MATERIALS:
HOUSING: LCP, 30% GLASS FILLED,
UL 94-V0 COMPLIANT
TERMINAL: PHOSPHOR BRONZE ALLOY
- PLATING ON TAIL:
PRESS-FIT TYPE
70472-XXXX IS 0.5-1.5um SnPb
70472-XXXXLF IS 0.5-1.5um Sn (LEAD FREE)
SOLDER-TO-BOARD TYPE
70472-XXXX IS 2-8um SnPb
70472-XXXXLF IS 2-8um Sn (LEAD FREE)
- PRODUCT SPECIFICATION:
GS-12-002
- APPLICATION SPECIFICATIONS:
BUS-20-061
GS-20-001
TA-941
- PRODUCT MARKING: (PART NUMBER & LOT CODE).
- INDICATED HOLES ARE UNPLATED.
- DIAMOND LOCATION PEG ARE ONLY EXISTED ON THE BOTH SIDES OF PRODUCT.
- TOP SURFACE OF PRESS BLOCK MAY EXTEND UP TO 0.4MM HIGHER THAN HOUSING. THIS MAY AFFECT THE TAIL LENGTH BEFORE APPLICATION TO A BOARD.
- DIMENSION APPLIES TO BOTH PRESS-FIT AND SOLDER TAIL TERMINATIONS.
- THESE PRODUCTS WHERE THE PART NUMBER ENDS IN "LF" MEET THE EUROPEAN UNION DIRECTIVES AND OTHER COUNTRY REGULATIONS AS DESCRIBED IN GS-22-008.

ALL PRODUCTS MANUFACTURED BEFORE SEPTEMBER 2005 WILL WITHSTAND EXPOSURE TO 240°C FOR 60 SECONDS IN A CONVECTION, INFAR-RED OR VAPOR PHASE REFLOW OVEN.

ALL PRODUCTS MANUFACTURED AFTER AUGUST 2005 WILL WITHSTAND EXPOSURE TO 260°C FOR 60 SECONDS IN A CONVECTION, INFAR-RED OR VAPOR PHASE REFLOW OVEN.
- FOR LEAD FREE PART NUMBERS ADD "LF" SUFFIX. EXAMPLE: 70472-XXXXLF.

mat'l. code				tolerances unless otherwise specified		CUSTOMER COPY		FCI	
NOTE 1				.X±.3		projection		www.fciconnect.com	
ltr	ecn no	dr	date	linear	.XX±.13	MM		title	
P				angles	.XXX±.051	1:1		B SERIES R/A SIGNAL RECEPT ASSY, 4 ROW, 5 MOD, PF/STB	
				dr	0°±2°	A		product family METRAL (tm)	
				engr	J.R. VOLSTORF 11/3/05	size		dwg no	
				chr	J.R. VOLSTORF 11/3/05	70472		213	
				appd	J.R. VOLSTORF 11/3/05	sheet		2 of 2	
sheet index	revision sheet	P	P						
		1	2						

cage code
22526

Mouser Electronics

Authorized Distributor

Click to View Pricing, Inventory, Delivery & Lifecycle Information:

[FCI / Amphenol:](#)

[70472-1006LF](#) [70472-1005LF](#) [70472-1002LF](#) [70472-1001LF](#)