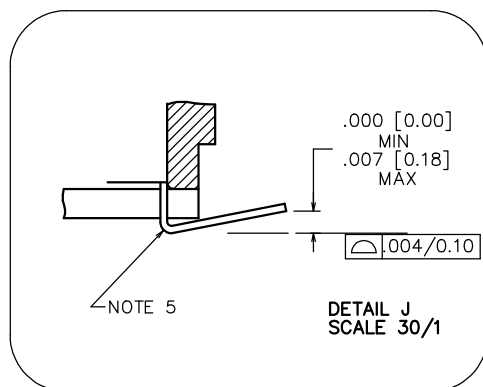
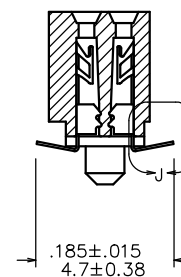
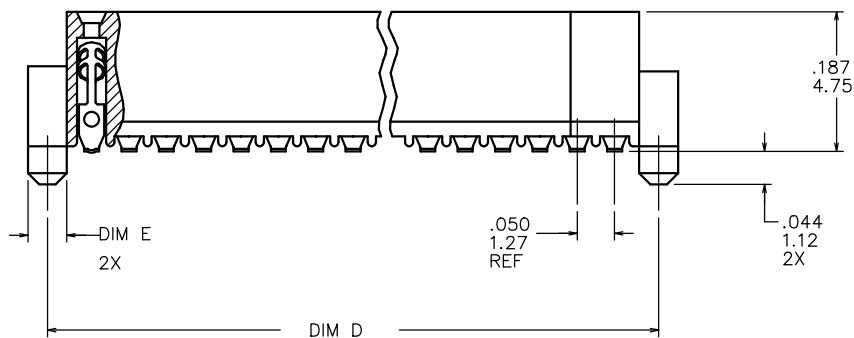
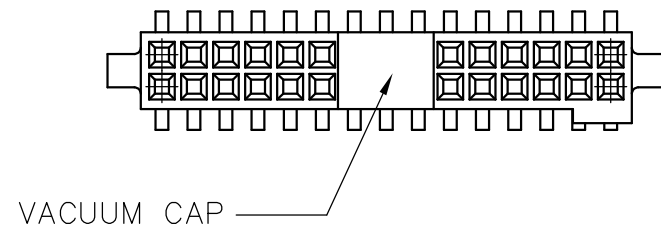
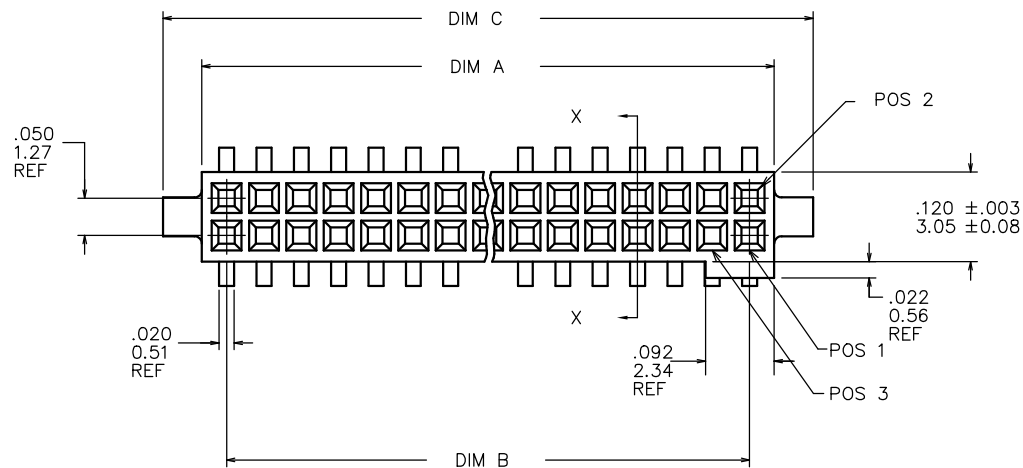






FCIconnect.com

Copyright FCI

PRODUCT NUMBER
SEE TABLE



mat'l. code —				surface ISO 1302 ✓		tolerance ISO 406 ISO 1101		projection 		product family RIB CAGE				
ltr	ecn no	dr	date	tolerances unless otherwise specified					INCH/MM scale 1:1	title .050cc VERT. SMT. W/LOC. & POL. FEATURE				
AH	ELX-N-19819	JH	12/22/14	angles	linear	XX±.01/XX±0.3								
AJ	ELX-N-39694	MX	12/21/20			XXX±.005/XXX±0.13								
			0°±2' XXXX±.0020/XXXX±0.051											
AD	M09-0058	CMR	4/06/09	dr	M. CLOUSER 6/26/91						dwg no		sheet1 of 3	size
AE	M09-0071	MHT	4/30/09	enr	B. BARUFFALO 6/26/91						87024	A3		
AF	N10-0174	YOH	6/17/10	chr	B. BARUFFALO 6/26/91									
AG	ELX-N-010202	YO	2/8/12	app	B. BARUFFALO 6/26/91									
sheet	revision	AJ	AJ	AJ						type		Product	Customer	Drawing
index	sheet	1	2	3										



FCIconnect.com

Copyright FCI

D

form: A3

A

B

C

1

2

3

4 PDS: Rev :AJ

STATUS Released

Printed: Jan 29, 2021

PRODUCT NO. NOTE 9	SIZE	DIM A	DIM B	DIM C	DIM D	DIM E	SPECIAL PACKAGING	TAPE WIDTH PITCH	PIECES PER REEL
87024-605	2 X 5	.266/6.756	.200/5.08	.370/9.398	.3200/8.128	ø.0520 /1.321	NOTE 6	24mm 12mm	750
-610	2 X 10	.516/13.106	.450/11.43	.620/15.748	.5700/14.478	ø.0520 /1.321	NOTE 6	24mm 12mm	750
-610P	2 X 10	.516/13.106	.450/11.43	.620/15.748	.5700/14.478	ø.0520 /1.321	NOTE 8	24mm 16mm	400
-615	2 X 15	.766/19.456	.700/17.78	.870/22.098	.8200/20.828	ø.0520 /1.321	NOTE 6	44mm 12mm	500
-620	2 X 20	1.016/25.806	.950/24.13	1.120/28.448	1.0700/27.178	ø.0520 /1.321	NOTE 6 & 7	44mm 12mm	500
-625	2 X 25	1.266/32.156	1.200/30.48	1.370/34.798	1.3200/33.528	ø.0520 /1.321	NOTE 6	56mm 12mm	500
-630	2 X 30	1.516/38.506	1.450/36.83	1.620/41.148	1.5700/39.878	ø.0520 /1.321	NOTE 6 & 7	56mm 12mm	500
-635	2 X 35	1.766/44.856	1.700/43.18	1.870/47.498	1.8200/46.228	ø.0520 /1.321	NOTE 6	72mm 12mm	500
-640	2 X 40	2.016/51.206	1.950/49.53	2.120/53.848	2.0700/52.578	ø.0520 /1.321	NOTE 6 & 7	72mm 12mm	500
-645	2 X 45	2.266/57.556	2.200/55.88	2.370/60.198	2.3200/58.928	ø.0520 /1.321	NOTE 6	72mm 12mm	500
-650	2 X 50	2.516/63.906	2.450/62.23	2.620/66.548	2.5700/65.278	ø.0520 /1.321	NOTE 6 & 7	88mm 12mm	500
-625S	2 X 25	1.266/32.156	1.200/30.48	1.370/34.798	1.3200/33.528	ø.0394 /1.00	NOTE 6	56mm 12mm	500

NOTES:

- HOUSING MATERIAL:
LCP GLASS FILLED FLAME RETARDANT PER UL 94V-0
COLOR: NATURAL
- TERMINAL MATERIAL: BeCu
- TERMINAL PLATING:
30u"/.76um MIN HARD GOLD OR GXT OVER Ni ON CONTACT ZONES,
100u"/2.54um MIN TIN OVER Ni IN SOLDERING ZONES,
OTHERWISE GOLD FLASH OR UNPLATED.
- APPLICATION INFORMATION:
 - RECOMMENDED MOUNTING PAD PATTERN IS
SHOWN IN FIGURE "A".
 - MATING PINS TO BE .0176/0.447 TO .0181/0.459 DIA.
 - MATING PIN TIPS TO BE IN TRUE POSITION TO MATING
GRID WITHIN .006/0.15 DIA.
 - SUGGESTED MATING PIN LENGTH .130/3.30
±.010/0.25.
- LEAD TIPS TO BE ABOVE HEEL, UP TO .007/0.18 MAX.
COPLANARITY TO BE MEASURED AT LOWEST POINT (HEEL).
- IF LF P/N THE PRODUCT MEETS EUROPEAN UNION DIRECTIVES AND OTHER
COUNTRY REGULATION AS DESCRIBED IN GS-22-008.
- THE HOUSING WILL WITHSTAND EXPOSURE TO 260°C PEAK TEMPERATURE
FOR 20 SECONDS IN A CONVECTION, INFRA-RED OR VAPOR PHASE REFLOW
OVEN. SEE APPLICATION NOTES/PROCEDURES IF THEY ARE AVAILABLE.
- PRODUCT SPEC PER BUS-12-087.
- PN DEFINE:

87024-605XXXLF

LEAD FREE

WITH "TR": TAPE AND REEL+CAP

WITH "CT": TUPE+CAP

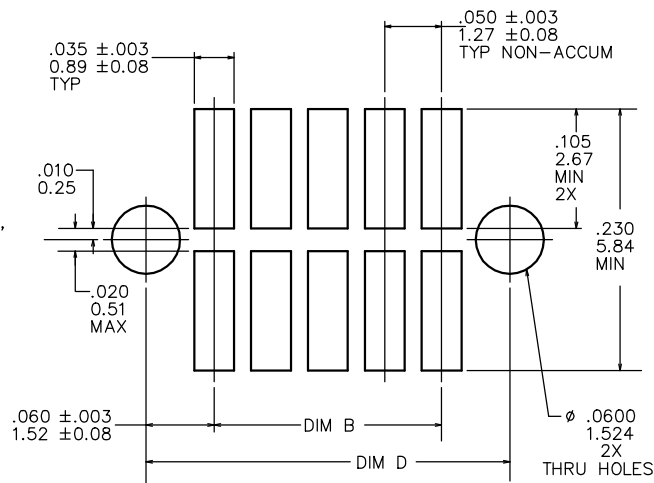
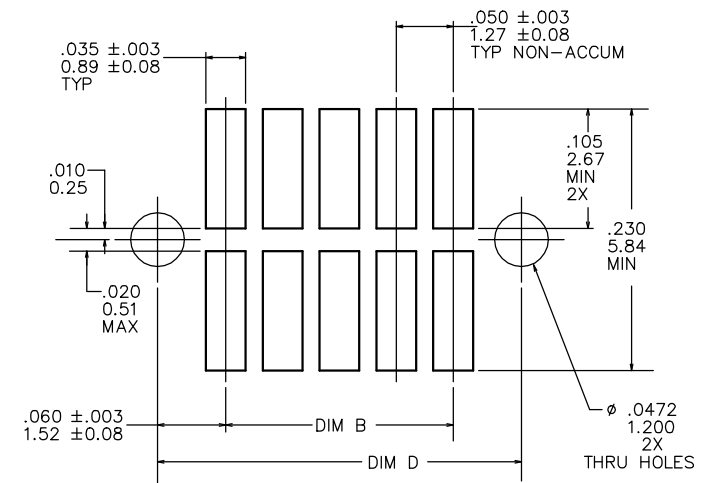
WITHOUT "TR" OR "CT": TUPE, NO CAP

WITH "P": THE CARRIER'S PITCH IS 16MM

WITHOUT "P": THE CARRIER'S PITCH IS 12MM

WITH "S": THE POST'S DIAMETER IS 1.00MM, FOR FIGURE B

WITHOUT "S": THE POST'S DIAMETER IS 1.321MM, FOR FIGURE A

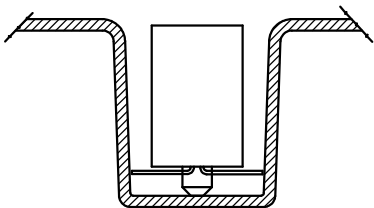
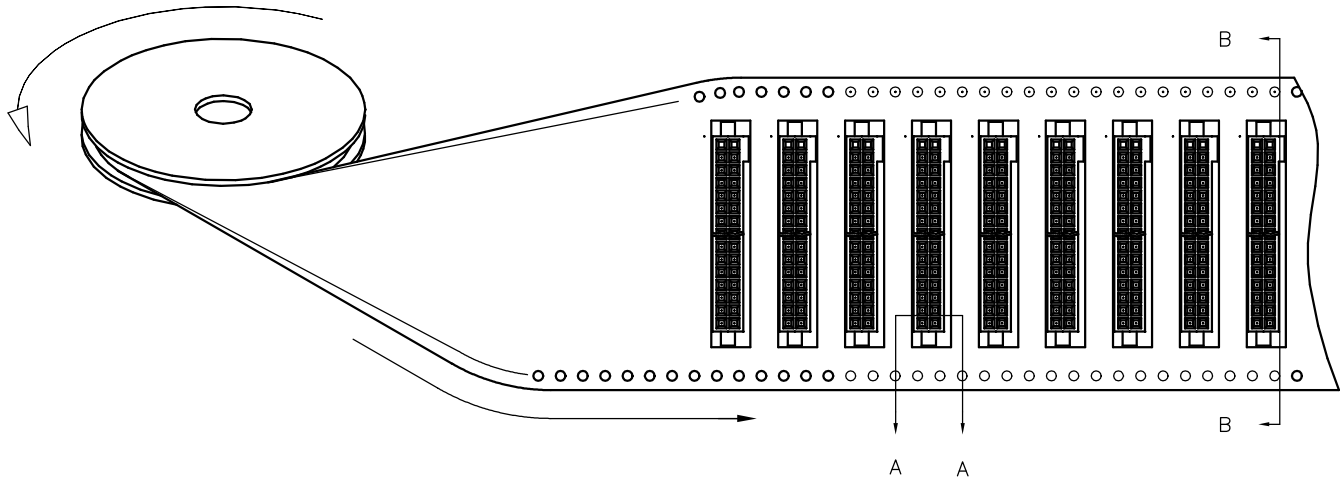
FIGURE A
RECOMMENDED
P.C.B. LAYOUTFIGURE B
RECOMMENDED
P.C.B. LAYOUT

mat'l. code				surface	tolerance	projection	product family		
-				ISO 1302	ISO 406 ISO 1101		RIB CAGE		
ltr	ecn no	dr	date	tolerances unless otherwise specified			title		
AJ				angles	linear	XX±.01/XX±0.3	.050cc VERT. SMT.		
						XXX±.005/XXX±0.13	W/LOC. & POL. FEATURE		
				0±2'		XXXX±.0020/XXX±0.051	scale 1:1		
				dr	M. CLOUSER	6/26/91	dwg no		
				enr	B. BARUFFALO	6/26/91	sheet2 of 3 size		
				chr	B. BARUFFALO	6/26/91	87024		
				app	B. BARUFFALO	6/26/91	A3		
sheet index				revision	sheet		type Product Customer Drawing		

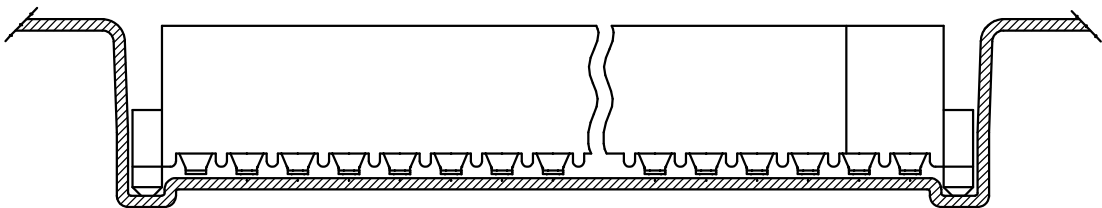
REFERENCE ONLY

TAPE WIDTH'S 32mm AND ABOVE HAS BOTH FEED TRACKS,
BELOW 32mm HAS TOP FEED TRACK ONLY.

UNREELING
DIRECTION



SECTION A-A



SECTION B-B

mat'l. code -				surface ISO 1302 ✓	tolerance ISO 406 ISO 1101	projection INCH/MM	product family RIB CAGE			
ltr	ecn no	dr	date	tolerances unless otherwise specified		scale 1:1	title			
AJ				angles	linear		.050cc VERT. SMT.			
				0°±2'			W/LOC. & POL. FEATURE			
				dr	M. CLOUSER	6/26/91	FCI	dwg no		sheet3 of 3
				enr	B. BARUFFALO	6/26/91		87024		A3
				chr	B. BARUFFALO	6/26/91		type		
				app	B. BARUFFALO	6/26/91		Product Customer Drawing		
sheet index	revision sheet									

Mouser Electronics

Authorized Distributor

Click to View Pricing, Inventory, Delivery & Lifecycle Information:

[FCI / Amphenol:](#)

[87024-615TR](#) [87024-615](#) [87024-625](#) [87024-635](#) [87024-645](#) [87024-645TRLF](#) [87024-635TRLF](#)