

PERFORMANCE CHARACTERISTICS :

CURRENT RATING : 1.5A AT 20°C (FULLY LOADED)
1A AT 70°C (FULLY LOADED)
RATED VOLTAGE : 500V AC (CONT / CONT)
OPERATING TEMPERATURE : -55°C TO 125°C
CONTACT RESISTANCE : 25mΩ MAX.
INSERTION FORCE : 0.75 N MAX / CONT
EXTRACTION FORCE : 0.15 N MIN / CONT
INSULATION RESISTANCE : 10⁴ MΩ MIN.

NOTES :

1. UL APPROVED WITH USR AND CNR.
2. MEASURED AT THE BOTTOM.
3. MATERIAL CONTACT : PHOSPHORBRONZE.
HOUSING : LCP 30% GLASS-FILLED.
4. CONNECTOR PRINTED WITH P/N AND DATE CODES.
5. FOR ACTUAL CONTACT LOADINGS, SEE LOADING
PATTERN MATING SIDE.)
6. 4 = LEVEL 1 (5.30)
5 = LEVEL 2 (6.80)
6 = LEVEL 3 (8.30)

LEAD FREE INDICATOR : LF = LEAD FREE

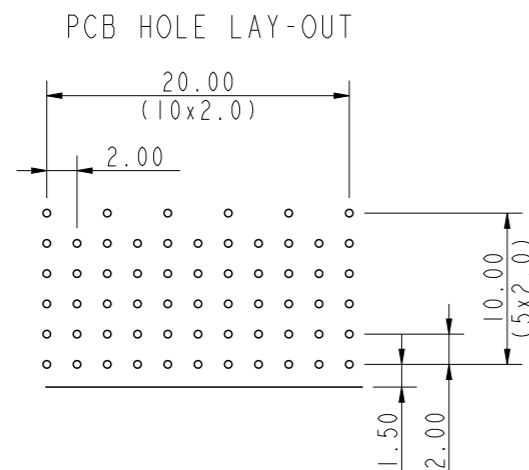
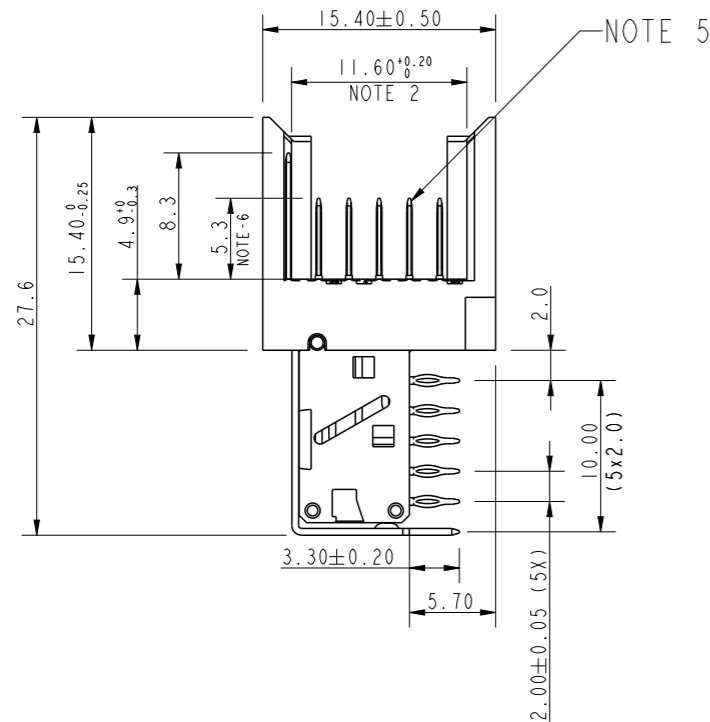
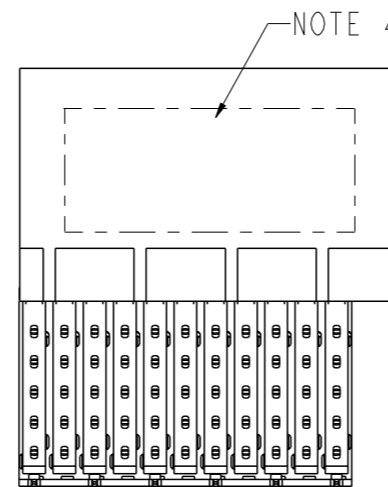
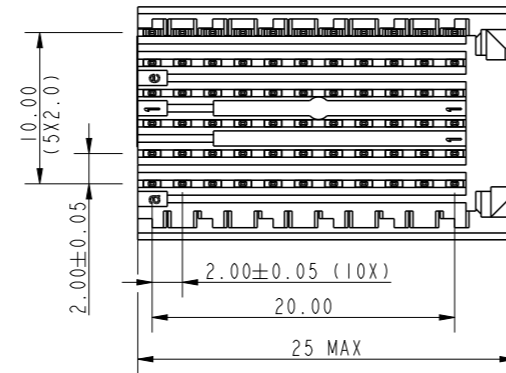
7. 'HM2J09PE5118'

PERFORMANCE LEVEL INDICATOR
(Ref DWG No BS,C ,201844,003)

8. FOR RECOMMENDED PTH DIMENSIONS REFER DRAWING : BS,A ,201572,001
9. THIS PRODUCT (LF) MEETS EUROPEAN UNION DIRECTIVES AND OTHER
COUNTRY REGULATIONS AS DESCRIBED IN GS-47-0004

LOADING PATTERN : MATING SIDE

F	6	6	6	6	6	6	6	6	6	6
E	4	4	4	4	4	4	4	4	4	4
D	4	4	4	4	4	4	4	4	4	4
C	4	4	4	4	4	4	4	4	4	4
B	4	4	4	4	4	4	4	4	4	4
A	4	4	4	4	4	4	4	4	4	4
Z	0	0	0	0	0	0	0	0	0	0
	1	2	3	4	5	6	7	8	9	10



spec ref	-	dr	P-Mathew Nebu	2011/05/24	projection	mm	size	A3	scale	1/1
tolerance std	ISO 406 ISO 1101	eng	Alex Babu	2019/11/11	chr	-	ecn no	ELX-I-26926-1	rel level	Released
surface	linear	appr	Kuriakose, San	2019/11/12	product family	MILLIPACS	rel level	Released	rev	H
ISO 1302	angular	0.X	±0.2	0.XX	±0.1	0.XXX	±0.05	0°	±1°	
Amphenol FCi	MPACS RA HDR	Type C, Shielded	cat. no.	HM2J09PE5118----	Product - Customer Drw	sheet 1 of 1				

Mouser Electronics

Authorized Distributor

Click to View Pricing, Inventory, Delivery & Lifecycle Information:

[FCI / Amphenol:](#)

[HM2J09PE5118N9](#)