

SPECIFIC DATAS: WITHOUT CONTACT IN ROW-E

NOTE-1: PRESS-IN RETENTION PEG

NOTE-2: CONNECTORS WITH PCB-2.4mm ARE
COMPATIBLE WITH WIDE AND NARROW BODIES

NOTE-3: PLUG FOR CODING KEY FIXING

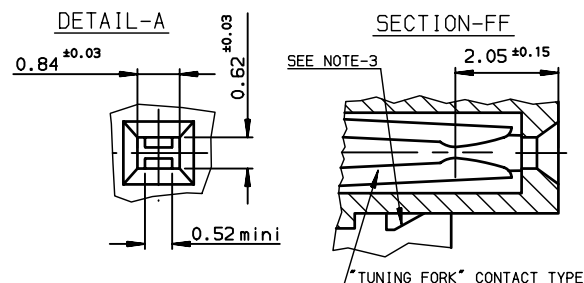
NOTE-4: EYE OF THE NEEDLE PRESS-FIT CTS TYPE

NOTE-5: FLAT ROCK INSERTION TOOLING IN PCB,
SEE DRW REF:C-8626-1003

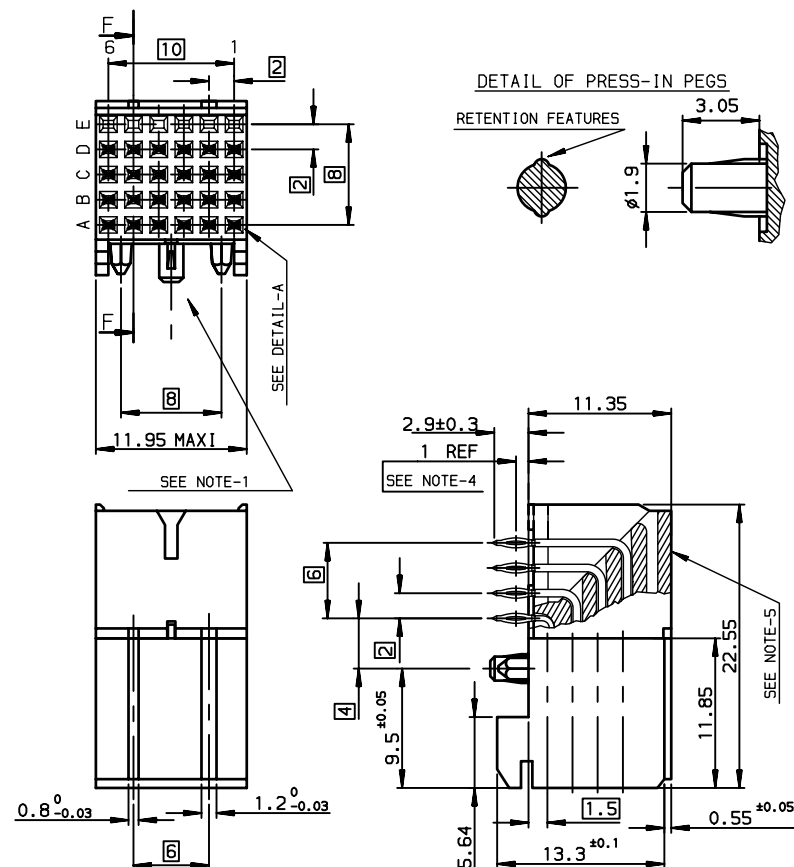
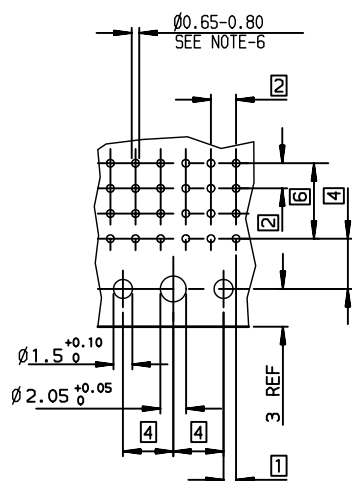
NOTE-6: METALIZED HOLE DEFINITION,SEE GS-12-447

NOTE-7: STANDARD PACKAGING IS IN TUBE ,BUT IF SUFFIX "P"
IS ADDED IN P/N ,PACKAGING IS IN TRAYS ,BUT CONNECTOR
MARKING IS WITHOUT "P"

Example: HM1FxxxxxxxH6PLF, marking: HM1FxxxxxxxH6LF



LAYOUT FOR P.C.B



GENERAL CHARACTERISTICS AND ROHS INFORMATIONS:

SEE GS-12-447

European Views

TIN LEAD PART NUMBER

Part Number: HM1F51FDP274H6

LEAD FREE PART NUMBER

Part Number: HM1F51FDP274H6LF

rev	ecn no	dr	date
A	-	MAS	1998/07/21
B	LS05-004	MLE	2005/02/19
C	LS06-0095	LGO	2006/07/14
D	LS06-0159	MLE	2006/10/20
E	LS0-0266	MLE	2007/11/08
-	-	-	-
-	-	-	-

www.fciconnect.com			surface ISO 1302 ✓	tolerance std ISO 406 ISO 1101	projection mm
			TOLERANCES UNLESS OTHERWISE SPECIFIED		
Dr	CHAMPION	1998/07/21	ANGULAR 0.XX' ±2'	0.X	±0.1
Eng	LENOIR	1998/07/21		0.XX	±0.1
Chr	LEGARE	1998/07/21		0.XXX	±0.1
Appr	LEGARE	1998/07/21	Product family		
			METRAL		
			Spec ref -		
			ECN LS07-0266		
			Title		
			METRAL FEMALE 5 ROW 24 CTS		
			RA-PF ROW-E NOT-LOADED		
			dwg C-8626-0914		
			Rev. E		
			CUSTOMER sheet 1 of 1		

REV F - 2006-04-17

Mouser Electronics

Authorized Distributor

Click to View Pricing, Inventory, Delivery & Lifecycle Information:

[FCI / Amphenol:](#)

[HM1F51FDP274H6PLF](#)