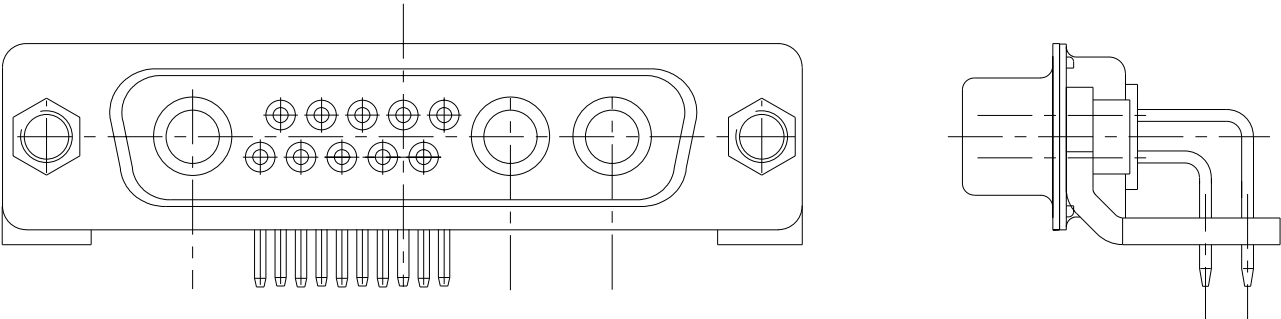
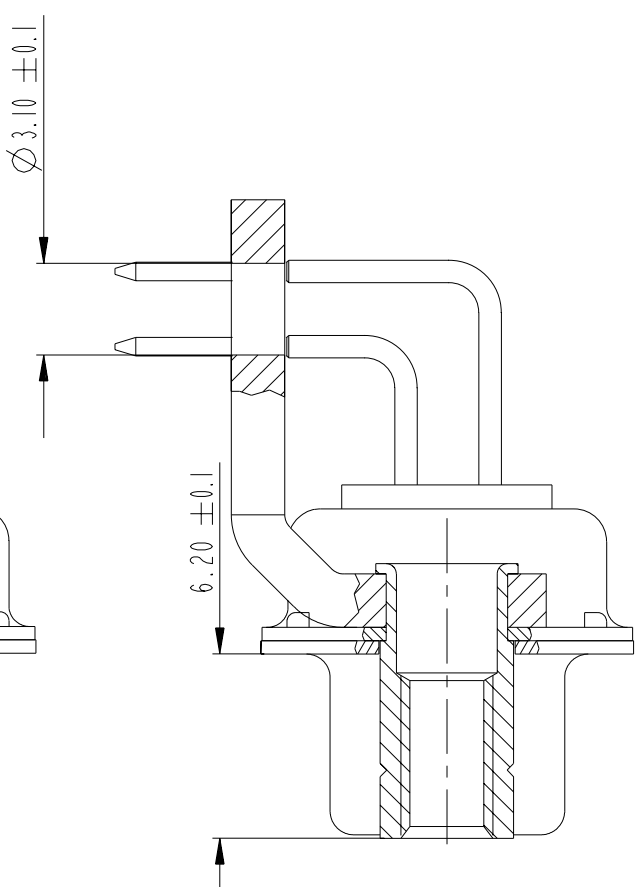
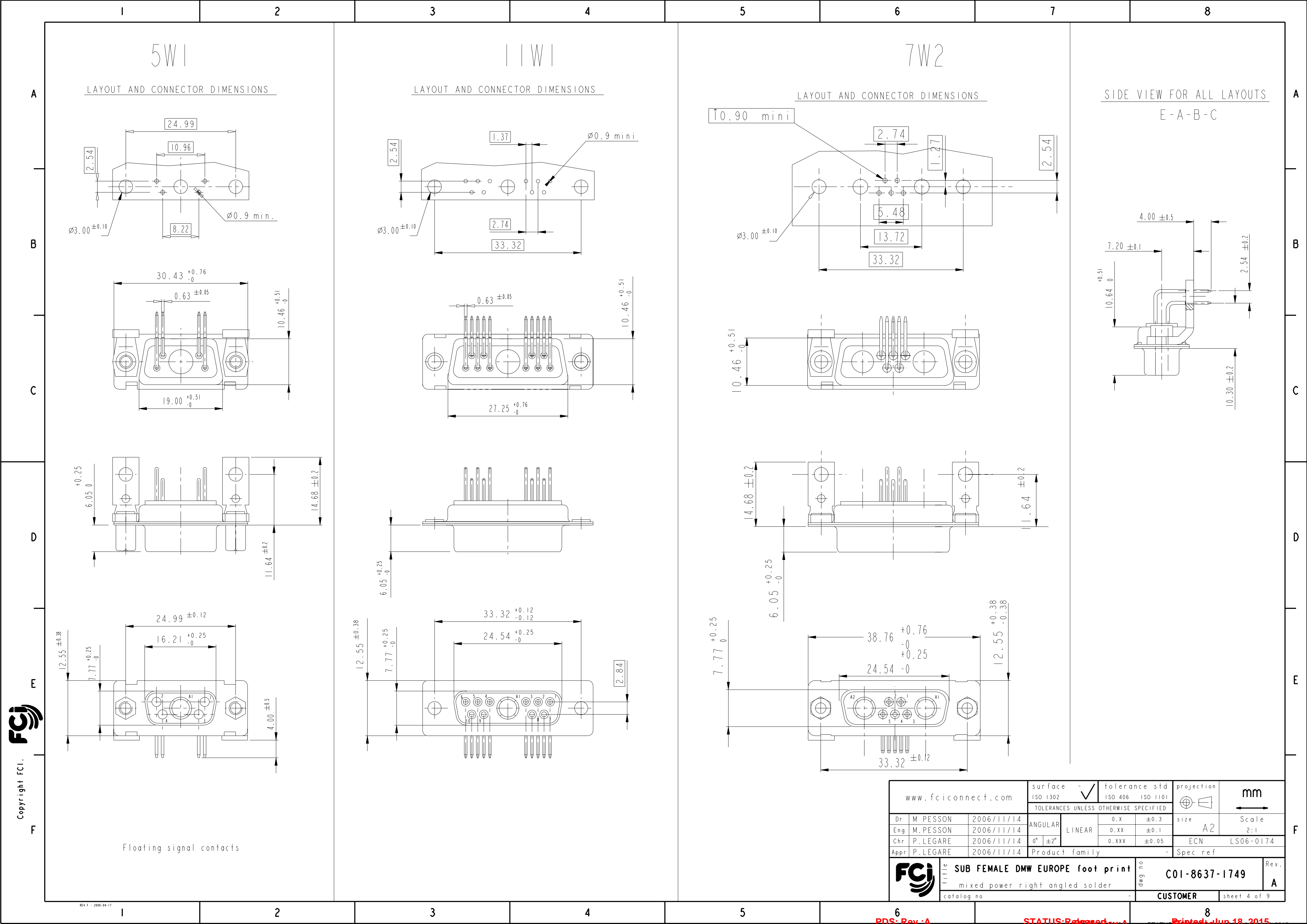


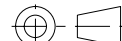


	I	2	3	4	5	6	7	8																																																																																																
A	<div>REFERENCE SPECIFICATIONS</div> <div>-NFC 93425 (in compliance with HE 507)</div> <div>PHYSICAL CHARACTERISTICS</div> <div>-INSULATOR MATERIAL: THERMOPLASTIC UL94V0</div> <div>-CONTACT MATERIAL: PHOSPHOR BRONZE(SIGNAL CONTACT) GOLD OVER NICKEL</div> <div>-ACCESSORIES: STEEL FOR BRACKETS Cadmium plated, yellow passivation</div> <div>B</div> <div>-SHELLS: STEEL Cadmium plated, yellow passivation</div> <div>ELECTRICAL CHARACTERISTICS</div> <div>-NOMINAL CURRENT: 7.5A (SIGNAL CONTACT)</div> <div>-CONTACT RESISTANCE: <=7.3 m Ohms(SIGNAL)</div> <div>-CONTACT/CONTACT : >=1000 V</div> <div>C</div> <div>ENVIRONMENTAL CHARACTERISTICS</div> <div>-CONTACT/GROUND : >=1200 V</div> <div>-INSULATION RESISTANCE: >=5000 MOhms</div> <div>D</div> <div>- CLIMATIC CATEGORY: 55/125/21</div> <div>TEMPERATURE RANGE -55°C TO +125°C</div> <div>DAMP HEAT STEADY STATE 56 DAYS</div> <div>SALT SPRAY 48 HOURS</div> <div>E</div> <div>F</div>			<div>Series</div> <div>Shell size: E A B C D (see sheet 3)</div> <div>M :Characteristics for the DM serie</div> <div>Front accessory definition (see sheet 2)</div> <div>blank :without accessory</div> <div>L :threaded insert M3</div> <div>O :threaded insert UNC 4-40</div> <div>V :female screw UNC 4-40</div> <div>Layout of contacts (see sheet 3)</div> <div>Contacts</div> <div>S :Socket</div> <div>Termination type</div> <div>5 Right angle/Europe standard</div> <div>Plating</div> <div>00 Right angle 500 matings/unmatings</div> <div>43 Right angle 500 matings/unmatings for harsh environment</div> <div>PCB accessories definition(see sheet 2)</div> <div>blank :Plastic brackets</div> <div>C :Without brackets</div> <div>M :Metal brackets</div> <div>N :Obligatory indication for HE 507</div>					<div>DBML13W3S500MN</div>			<div>13W3 FOR EXAMPLE</div> <div></div>																																																																																												
<div>FCI</div> <div>Copyright FCI.</div>				<table><tr><td>rev</td><td>ecn no</td><td>dr</td><td>date</td></tr><tr><td>A</td><td>LS06-0174</td><td>MPE</td><td>2006/11/14</td></tr><tr><td>-</td><td>-</td><td>-</td><td>-</td></tr><tr><td>-</td><td>-</td><td>-</td><td>-</td></tr><tr><td>-</td><td>-</td><td>-</td><td>-</td></tr><tr><td>-</td><td>-</td><td>-</td><td>-</td></tr><tr><td>-</td><td>-</td><td>-</td><td>-</td></tr><tr><td>-</td><td>-</td><td>-</td><td>-</td></tr></table> <table><tr><td colspan="3">www.fciconnect.com</td><td>surface - ISO 1302</td><td>tolerance std ISO 406 ISO 1101</td><td>projection TOLERANCES UNLESS OTHERWISE SPECIFIED</td><td>size</td><td>mm</td></tr><tr><td>Dr</td><td>M.PESSON</td><td>2006/11/14</td><td>ANGULAR</td><td>0.X</td><td>±0.3</td><td>A2</td><td>Scale 2:1</td></tr><tr><td>Eng</td><td>M.PESSON</td><td>2006/11/14</td><td>LINEAR</td><td>0.XX</td><td>±0.1</td><td></td><td></td></tr><tr><td>Chr</td><td>P.LEGARE</td><td>2006/11/14</td><td>0° ±2°</td><td>0.XXX</td><td>±0.05</td><td>ECN</td><td>LS06-0174</td></tr><tr><td>Appr</td><td>P.LEGARE</td><td>2006/11/14</td><td colspan="2">Product family</td><td>-</td><td>Spec ref</td><td></td></tr><tr><td colspan="3">FCI</td><td colspan="2">title SUB FEMALE DMW EUROPE foot print</td><td colspan="2">dwg no C01-8637-1749</td><td>Rev. A</td></tr><tr><td colspan="3"></td><td colspan="2">mixed power right angled solder</td><td colspan="2"></td><td></td></tr><tr><td colspan="3"></td><td colspan="2">catalog no</td><td>-</td><td>CUSTOMER</td><td>sheet 1 of 9</td></tr></table>					rev	ecn no	dr	date	A	LS06-0174	MPE	2006/11/14	-	-	-	-	-	-	-	-	-	-	-	-	-	-	-	-	-	-	-	-	-	-	-	-	www.fciconnect.com			surface - ISO 1302	tolerance std ISO 406 ISO 1101	projection TOLERANCES UNLESS OTHERWISE SPECIFIED	size	mm	Dr	M.PESSON	2006/11/14	ANGULAR	0.X	±0.3	A2	Scale 2:1	Eng	M.PESSON	2006/11/14	LINEAR	0.XX	±0.1			Chr	P.LEGARE	2006/11/14	0° ±2°	0.XXX	±0.05	ECN	LS06-0174	Appr	P.LEGARE	2006/11/14	Product family		-	Spec ref		FCI			title SUB FEMALE DMW EUROPE foot print		dwg no C01-8637-1749		Rev. A				mixed power right angled solder								catalog no		-	CUSTOMER	sheet 1 of 9
rev	ecn no	dr	date																																																																																																					
A	LS06-0174	MPE	2006/11/14																																																																																																					
-	-	-	-																																																																																																					
-	-	-	-																																																																																																					
-	-	-	-																																																																																																					
-	-	-	-																																																																																																					
-	-	-	-																																																																																																					
-	-	-	-																																																																																																					
www.fciconnect.com			surface - ISO 1302	tolerance std ISO 406 ISO 1101	projection TOLERANCES UNLESS OTHERWISE SPECIFIED	size	mm																																																																																																	
Dr	M.PESSON	2006/11/14	ANGULAR	0.X	±0.3	A2	Scale 2:1																																																																																																	
Eng	M.PESSON	2006/11/14	LINEAR	0.XX	±0.1																																																																																																			
Chr	P.LEGARE	2006/11/14	0° ±2°	0.XXX	±0.05	ECN	LS06-0174																																																																																																	
Appr	P.LEGARE	2006/11/14	Product family		-	Spec ref																																																																																																		
FCI			title SUB FEMALE DMW EUROPE foot print		dwg no C01-8637-1749		Rev. A																																																																																																	
			mixed power right angled solder																																																																																																					
			catalog no		-	CUSTOMER	sheet 1 of 9																																																																																																	
REV F - 2006-04-17				<div>PDS: Rev :A</div> <div>STATUS: Released</div> <div>Printed: Jun 18, 2015</div>																																																																																																				



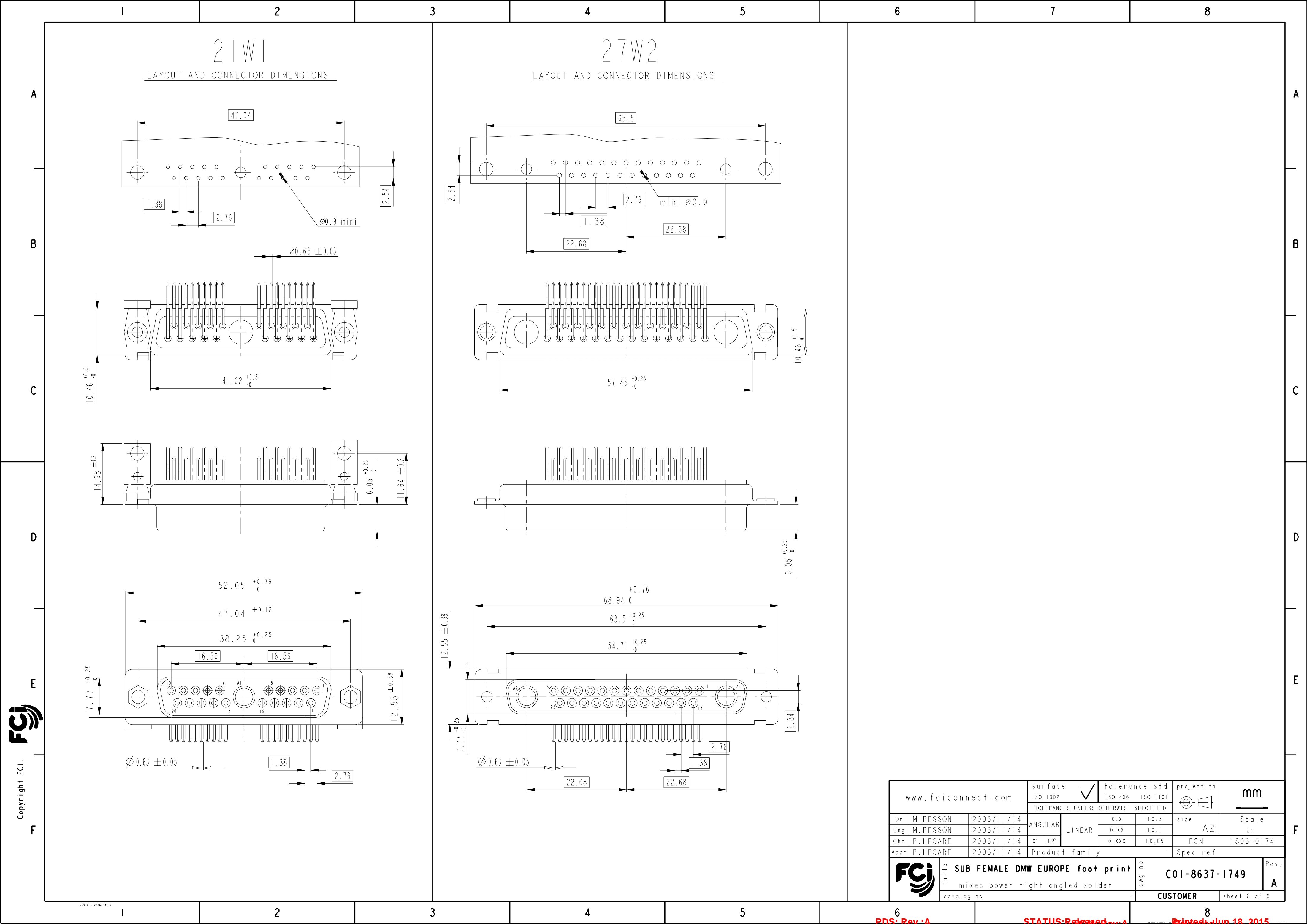
www.fciconnect.com			surface - <input checked="" type="checkbox"/>		tolerance std		projection		mm			
			ISO 1302		ISO 406 ISO 1101							
			TOLERANCES UNLESS OTHERWISE SPECIFIED									
Dr	M. PESSON	2006/11/14	ANGULAR	LINEAR	0.X		±0.3		size		Scale	
Eng	M. PESSON	2006/11/14			0.XX		±0.1		A2		2:1	
Chr	P. LEGARE	2006/11/14			0.XXX		±0.05		ECN		LS06-0174	
Appr	P. LEGARE	2006/11/14	Product family					-		Spec ref		
			SUB FEMALE DMW EUROPE foot print mixed power right angled solder					title C01-8637-1749		Rev. A		
catalog no			-					CUSTOMER		sheet 2 of 9		



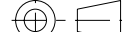


Copyright FCI.

www.fciconnect.com			surface - <input checked="" type="checkbox"/> ISO 1302		tolerance std - <input checked="" type="checkbox"/> ISO 406 <input checked="" type="checkbox"/> ISO 1101		projection 		mm 	
TOLERANCES UNLESS OTHERWISE SPECIFIED										
Dr	M. PESSON	2006/11/14	ANGULAR	LINEAR	0.X	±0.3	size A2	Scale 2:1		
Eng	M. PESSON	2006/11/14			0.XX	±0.1				
Chr	P. LEGARE	2006/11/14			0.XXX	±0.05				
Appr	P. LEGARE	2006/11/14	Product family				-	ECN LS06-0174		
							-	Spec ref		
		title	SUB FEMALE DMW EUROPE foot print				dwg no	C01-8637-1749		Rev. A
mixed power right angled solder										
catalog no										
				-		CUSTOMER		sheet 4 of 9		

1		2	3	4	5	6	7	8
13W3		9W4		17W2				
LAYOUT AND CONNECTOR DIMENSIONS		LAYOUT AND CONNECTOR DIMENSIONS		LAYOUT AND CONNECTOR DIMENSIONS				
		Floating signal contacts						

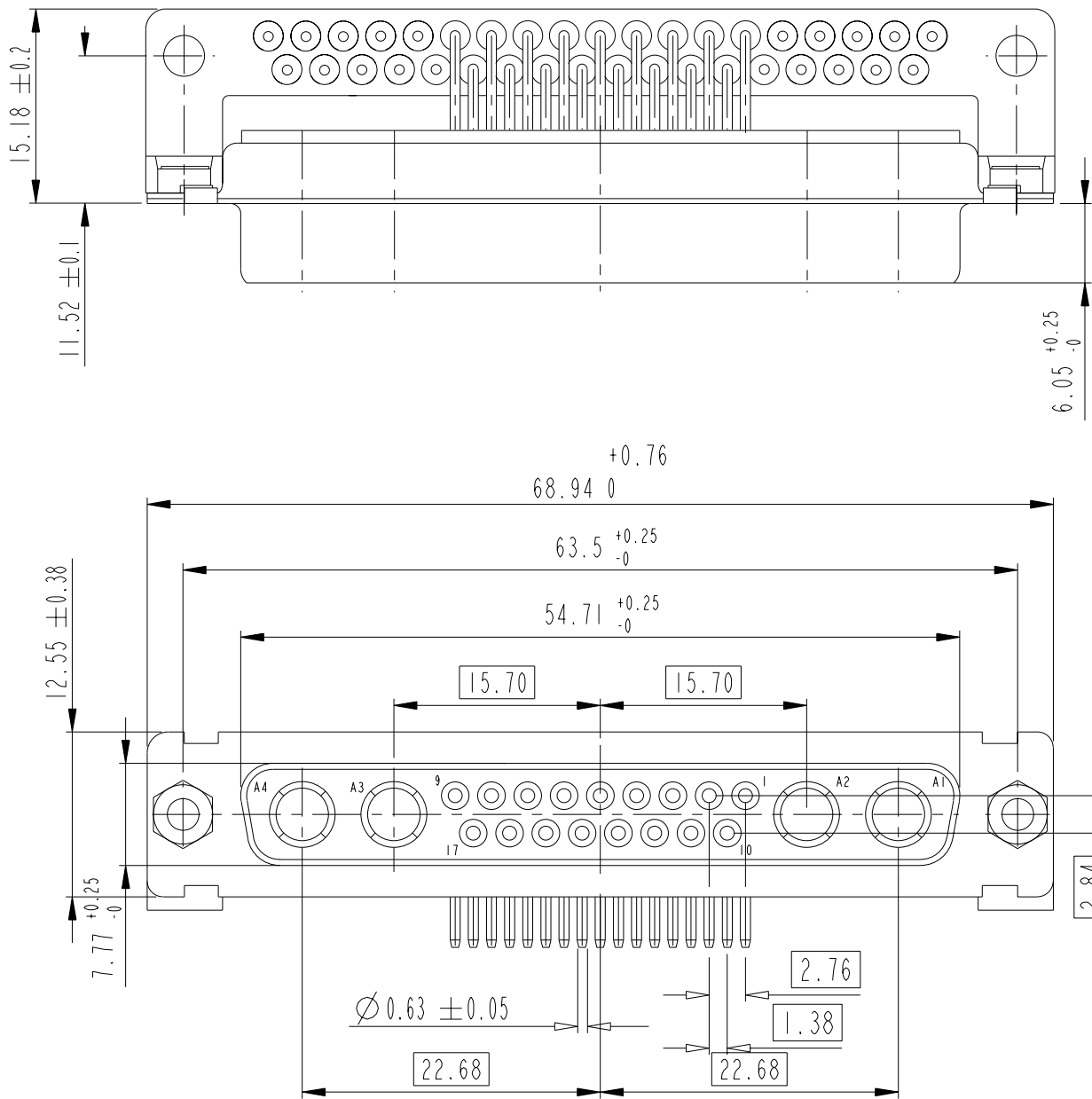
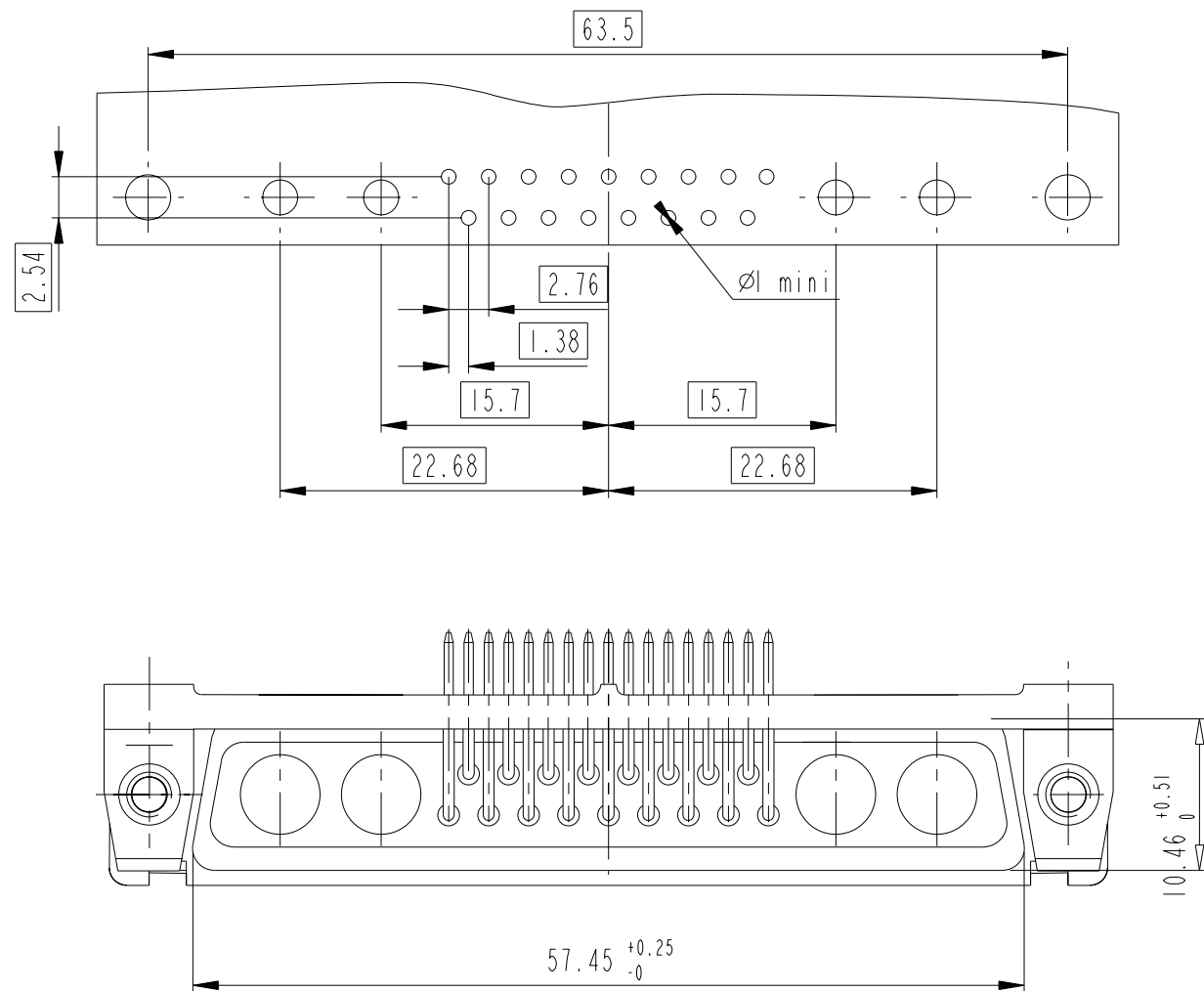


Copyright FCi.

www.fciconnect.com			surface - <input checked="" type="checkbox"/> ISO 1302		tolerance std ISO 406 ISO 1101		projection 		mm 		
TOLERANCES UNLESS OTHERWISE SPECIFIED											
Dr	M. PESSON	2006/11/14	ANGULAR	LINEAR	0.X ±0.3		size A2	Scale 2:1			
Eng	M. PESSON	2006/11/14			0.XX ±0.1						
Chr	P. LEGARE	2006/11/14			0.XXX ±0.05						
Appr	P. LEGARE	2006/11/14	0° ±2°		ECN		LS06-0174				
			Product family				-		Spec ref		
		title	SUB FEMALE DMW EUROPE foot print				dwg no	C01-8637-1749		Rev.	
			mixed power right angled solder							A	
			catalog no							-	
				CUSTOMER				sheet 6 of 9			

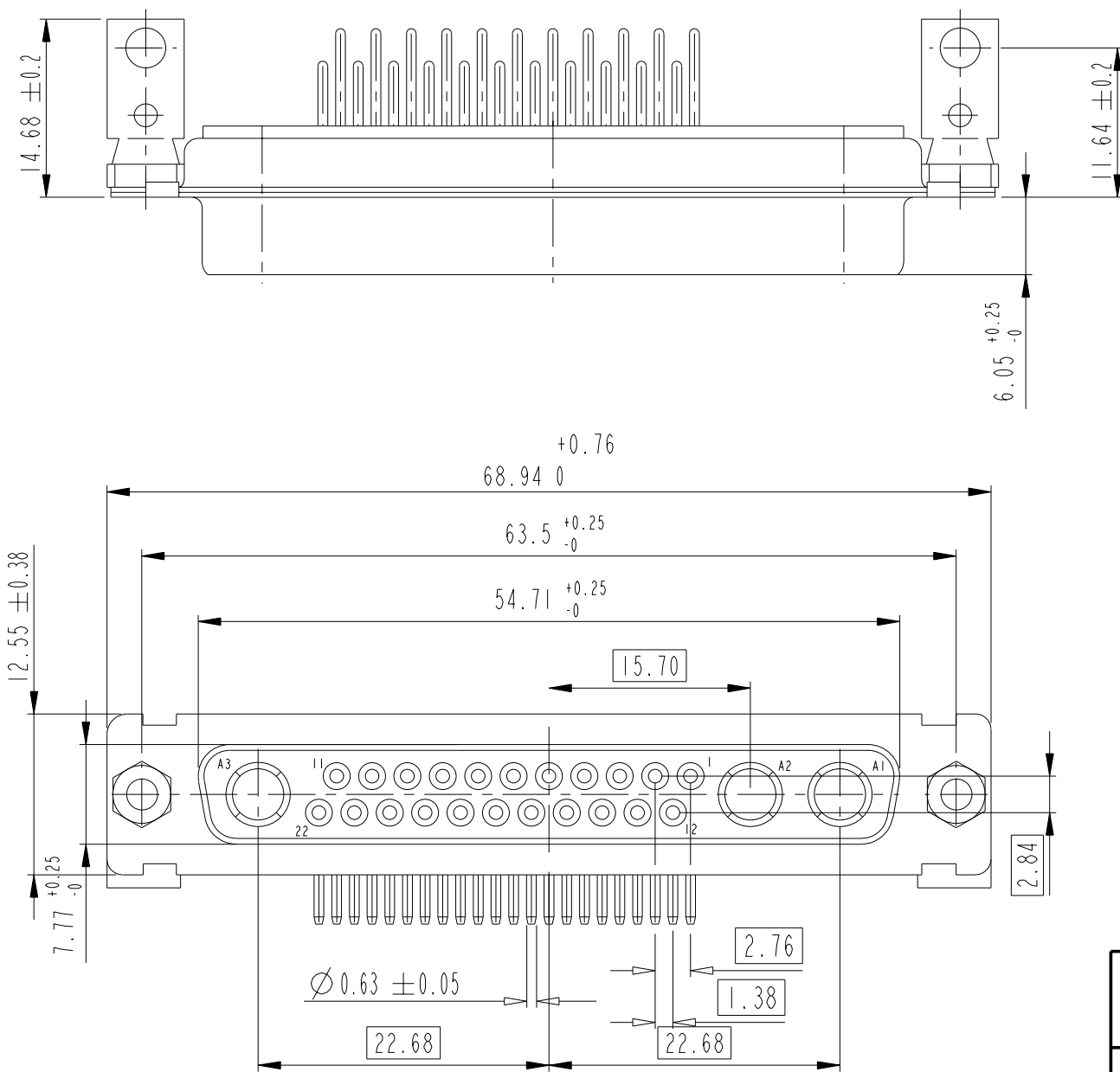
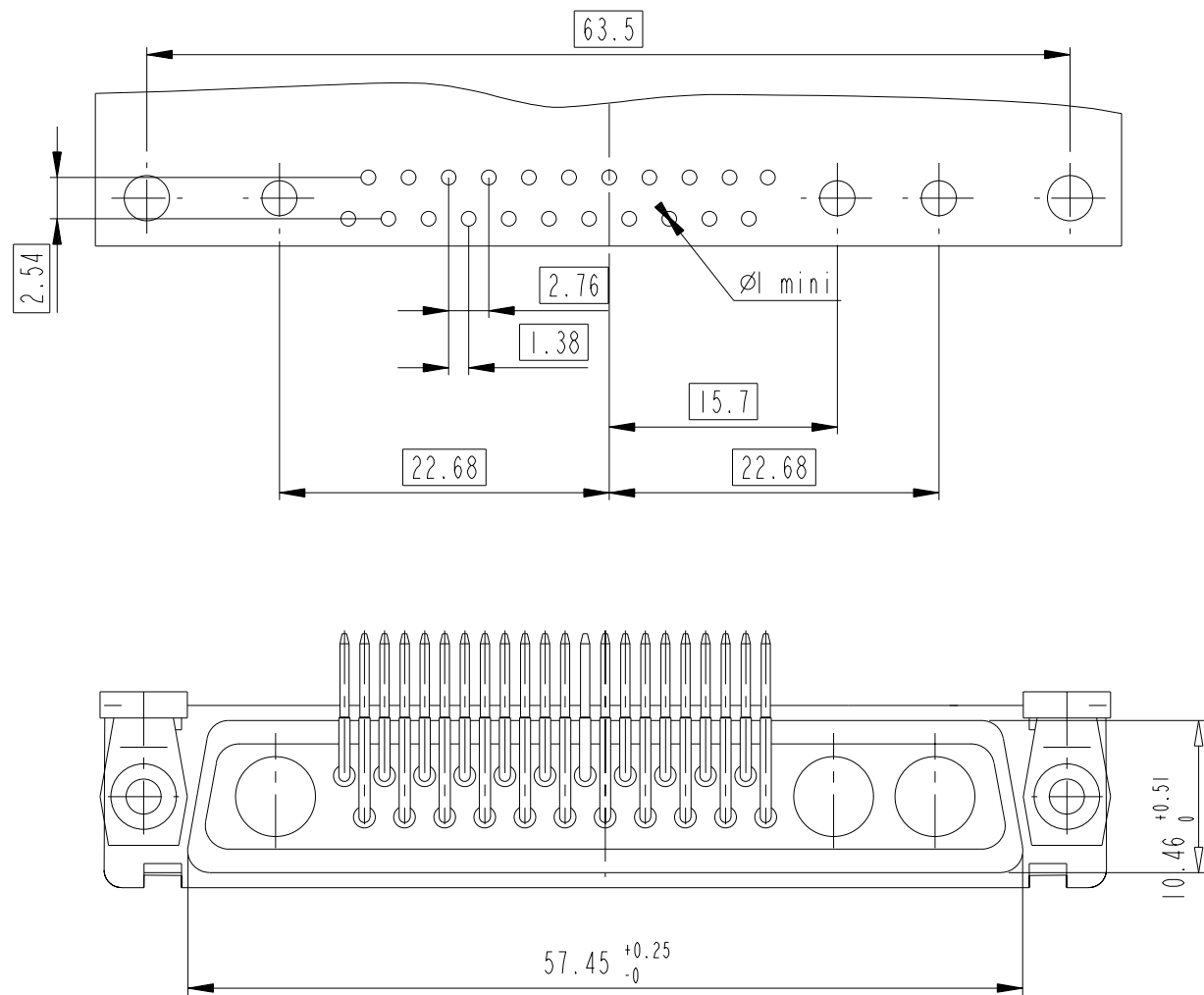
LAYOUT AND CONNECTOR DIMENSIONS

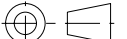


21WA4



LAYOUT AND CONNECTOR DIMENSIONS

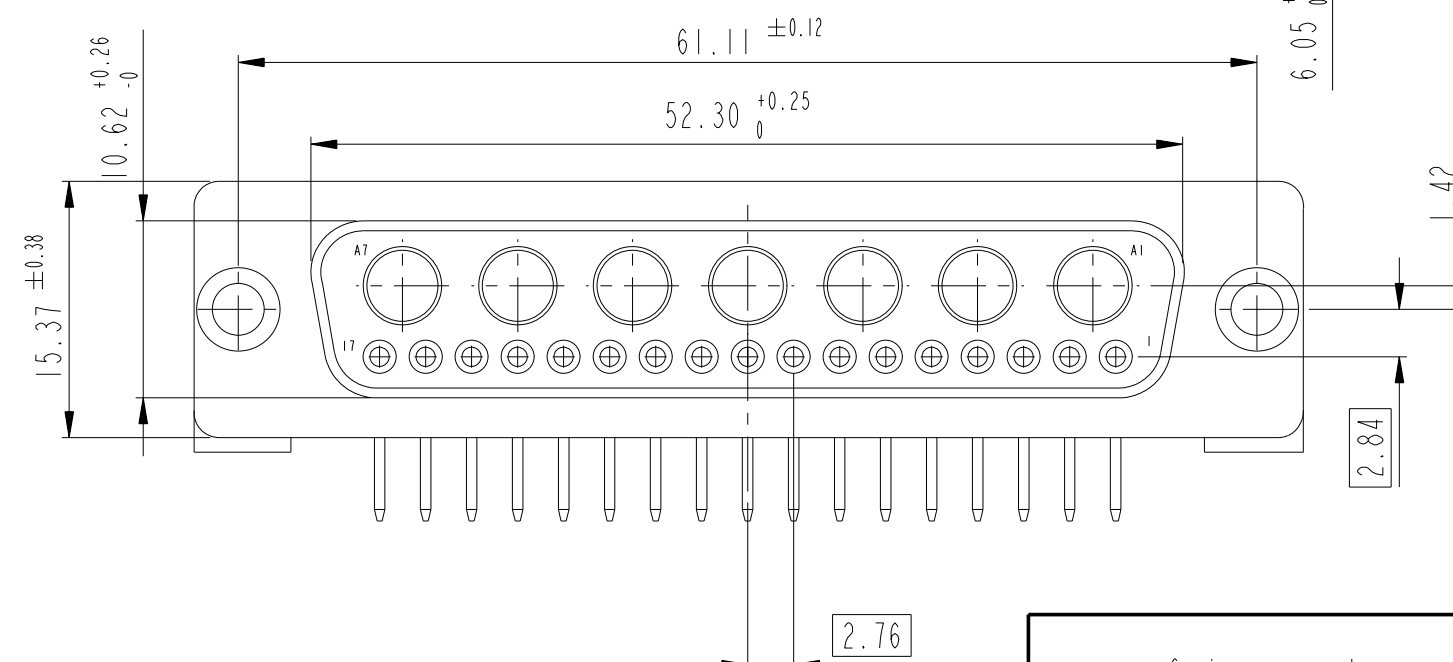
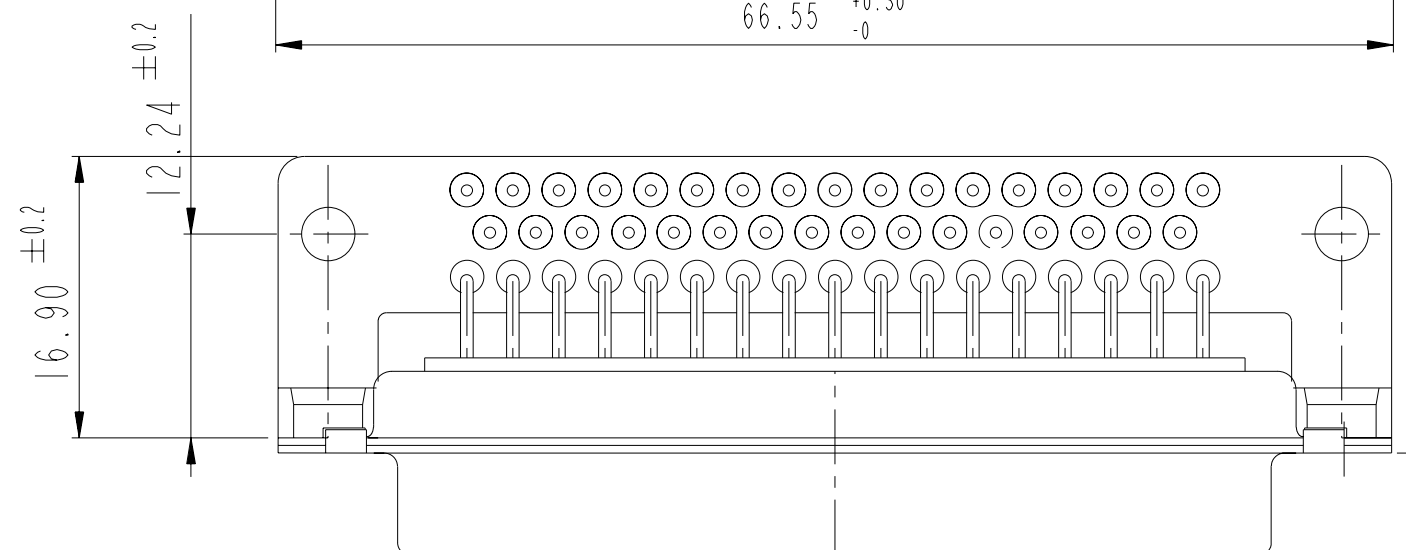
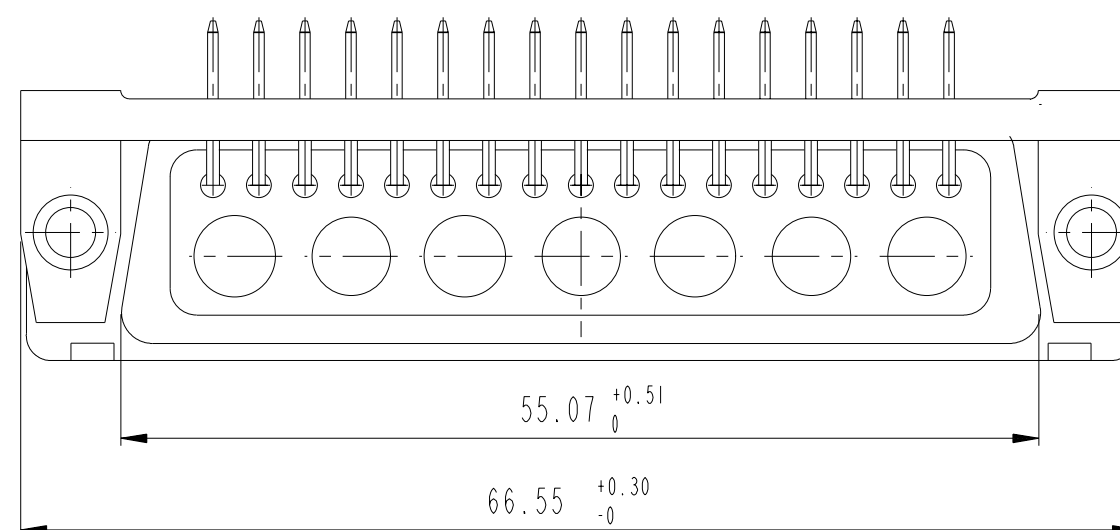
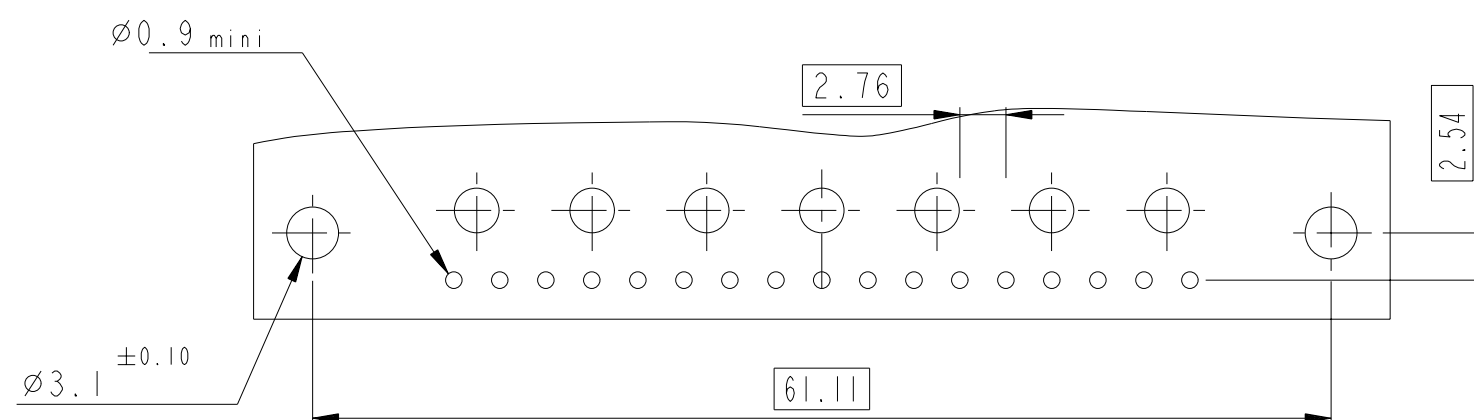
25W3


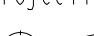




www.fciconnect.com			surface - <input checked="" type="checkbox"/> ISO 1302		tolerance std ISO 406 ISO 1101		projection 		mm 	
			TOLERANCES UNLESS OTHERWISE SPECIFIED							
Dr	M. PESSON	2006/11/14	ANGULAR	LINEAR	0.X	±0.3	size A2	Scale 2:1		
Eng	M. PESSON	2006/11/14			0.XX	±0.1				
Chr	P. LEGARE	2006/11/14			0° ±2°	0.XXX	±0.05	ECN LS06-0174		
Appr	P. LEGARE	2006/11/14	Product family -				Spec ref			
			title SUB FEMALE DMW EUROPE foot print			dwg no C01-8637-1749			Rev. A	
			mixed power right angled solder							
catalog no -						CUSTOMER			sheet 7 of 9	

24W7

LAYOUT AND CONNECTOR DIMENSIONS



www.fciconnect.com			surface - 		tolerance std ISO 1302 ISO 406 ISO 1101		projection 		mm 	
			TOLERANCES UNLESS OTHERWISE SPECIFIED							
Dr	M. PESSON	2006/11/14	ANGULAR	LINEAR	0.X	±0.3	size A2	Scale 2:1		
Eng	M. PESSON	2006/11/14			0.XX	±0.1				
Chr	P. LEGARE	2006/11/14			0.XXX	±0.05		ECN LS06-0174		
Appr	P. LEGARE	2006/11/14	Product family					Spec ref		
			SUB FEMALE DMW EUROPE foot print mixed power right angled solder				C01-8637-1749			Rev A
title			catalog no				CUSTOMER			sheet 8 of 9

Mouser Electronics

Authorized Distributor

Click to View Pricing, Inventory, Delivery & Lifecycle Information:

[FCI / Amphenol:](#)

[DBM17W2S500N](#) [DBM13W3S500CN](#) [DBM17W2S500CN](#) [DDM24W7S500N](#) [DCM25W3S500N](#)