

8

7

6

5

4

3

DRW NO.  
C-380-5392-500

SH  
1

REV  
B

ZONE	REV	SCR NUMBER	DESCRIPTION	BY	DATE	APPROVED
ALL	A	DMAN-8W TLCB.VER01	NEW RELEASE	D.MALOON	08/03/12	D.McNAMARA
SHT 1 SHT 3 SHT 4	B	MCHH-9UPNUP.VER01	ADDED NOTE 11. ADDED HOLES NOT NECESSARY TO NOTE 4. REMOVED A DRILLED HOLE ON PAD AND VIA LAYOUTS	M.CHARETH	03/17/15	D.McNAMARA

TABLE 1	
PART NUMBER ①	DESCRIPTION
380-5392-X00	RECEPTACLE ASSY. 6 PAIR. 20 MM HIGH. 18 WAFERS. 100 OHMS. W/LOSSY
380-5492-X00	RECEPTACLE ASSY. 6 PAIR. 20 MM HIGH. 18 WAFERS. 85 OHMS. W/LOSSY
380-5592-X00	RECEPTACLE ASSY. 6 PAIR. 20 MM HIGH. 18 WAFERS. 100 OHMS. NO LOSSY
380-5692-X00	RECEPTACLE ASSY. 6 PAIR. 20 MM HIGH. 18 WAFERS. 85 OHMS. NO LOSSY

ISOMETRIC VIEW  
SCALE 5/1

NOTES:

① ASSEMBLY PART NUMBER VARIES WITH PLATING OPTION AS FOLLOWS:  
FOR NI SULFAMATE UNDERPLATE, 8TH DIGIT OF P/N IS 2.  
FOR NANO NI UNDERPLATE, 8TH DIGIT OF P/N IS 4.

2. MAT'L:  
HOUSING/WAFERS/VACUUM CAP - LCP.  
CONTACTS - HIGH PERFORMANCE COPPER ALLOY, PER MTS-506.

3. 0.71 DIA SOLDER SPHERES WILL NOT BE PERFECTLY SPHERICAL AFTER REFLOW ATTACHMENT.

④ HOLES RECOMMENDED FOR VISUAL INSPECTION OF CONNECTOR ALIGNMENT AFTER PLACEMENT AND BEFORE REFLOW. HOLES NOT NECESSARY.

⑤ SOLDER BALL PROTRUSION BELOW HOUSING.

⑥ SEE TECHNICAL BULLETIN TB-2241 FOR DETAILED SMT PROCESSING AND PCB FOOT PRINT RECOMMENDATIONS.

⑦ MAXIMUM CO-PLANARITY OF THE BALL FIELD.

⑧ MAXIMUM RADIAL TRUE POSITION OF ANY SOLDER BALL IN RELATION TO AN IDEAL BEST FIT GRID.

9. TOLERANCES DO NOT APPLY TO REFERENCE DIMENSIONS SHOWN IN "Ø" OR BASIC DIMENSIONS SHOWN IN "□".

10. REFER TO FILE 380-5X92-XX0.STP FOR SIMPLIFIED 3D MODEL OF ASSEMBLY.

⑪ TOOLING HOLES USED FOR INTERNAL PROCESS ALIGNMENT AND NOT REQUIRED FOR SMT PROCESS ALIGNMENT. QUANTITY OF TOOLING HOLES IS OPTIONAL. AT MANUFACTURERS DISCRETION.

TOLERANCES		DESIGN 11/11/10 D.MALOON	<b>Amphenol TCS</b> A Division of Amphenol Corporation 200 Innovative Way, Nashua, NH 03062 603.879.3000		
0.0	±0.25	DRAWN 07/11/11 D.MALOON			
0.00	±0.13	CHK 08/03/12 D.McNAMARA			
0.000	± -	APVD 08/03/12 D.McNAMARA			
ANGLES		± -	TITLE RECEPTACLE ASSEMBLY, 18 WAFERS InfinX 6 PAIR 20 MM HIGH		
 INTERPRET PER ASME Y14.5M CODE IDENT 314.13		UNLESS OTHERWISE SPECIFIED DIMENSIONS ARE IN MM. DECIMAL MARKER IS A PERIOD		PART NO. SEE TABLE 1	REV N/A
		DRAWING NO. C-380-5392-500		REV B	
		PART 01155-RECEP-ASSY-6X20X18-VCP DRAWING C-380-5392-500		0.0 A.9	
		SIZE D	SCALE 5/1	SHEET 1 OF 4	

8

7

6

5

4

3

2

1

D

C

B

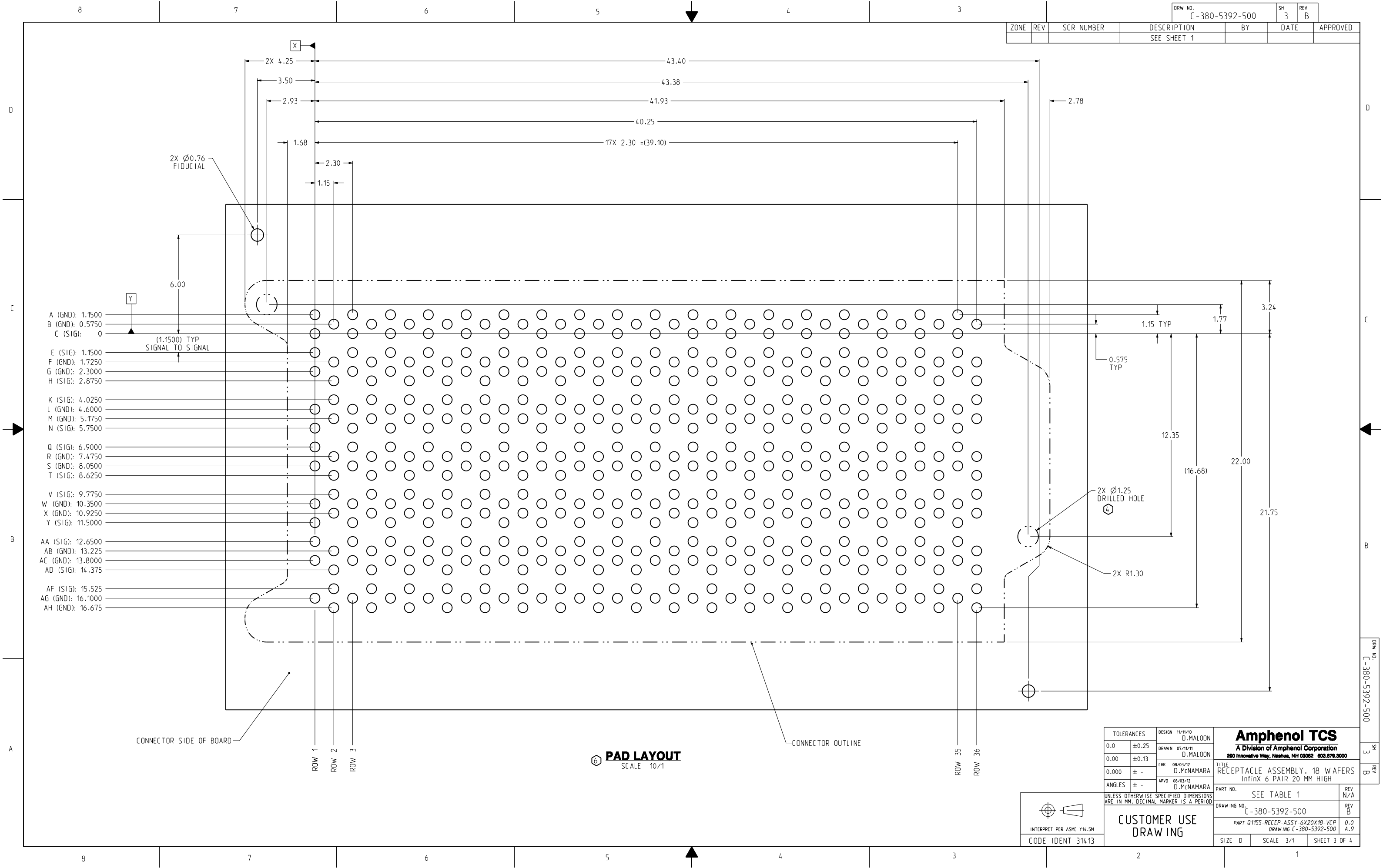
A

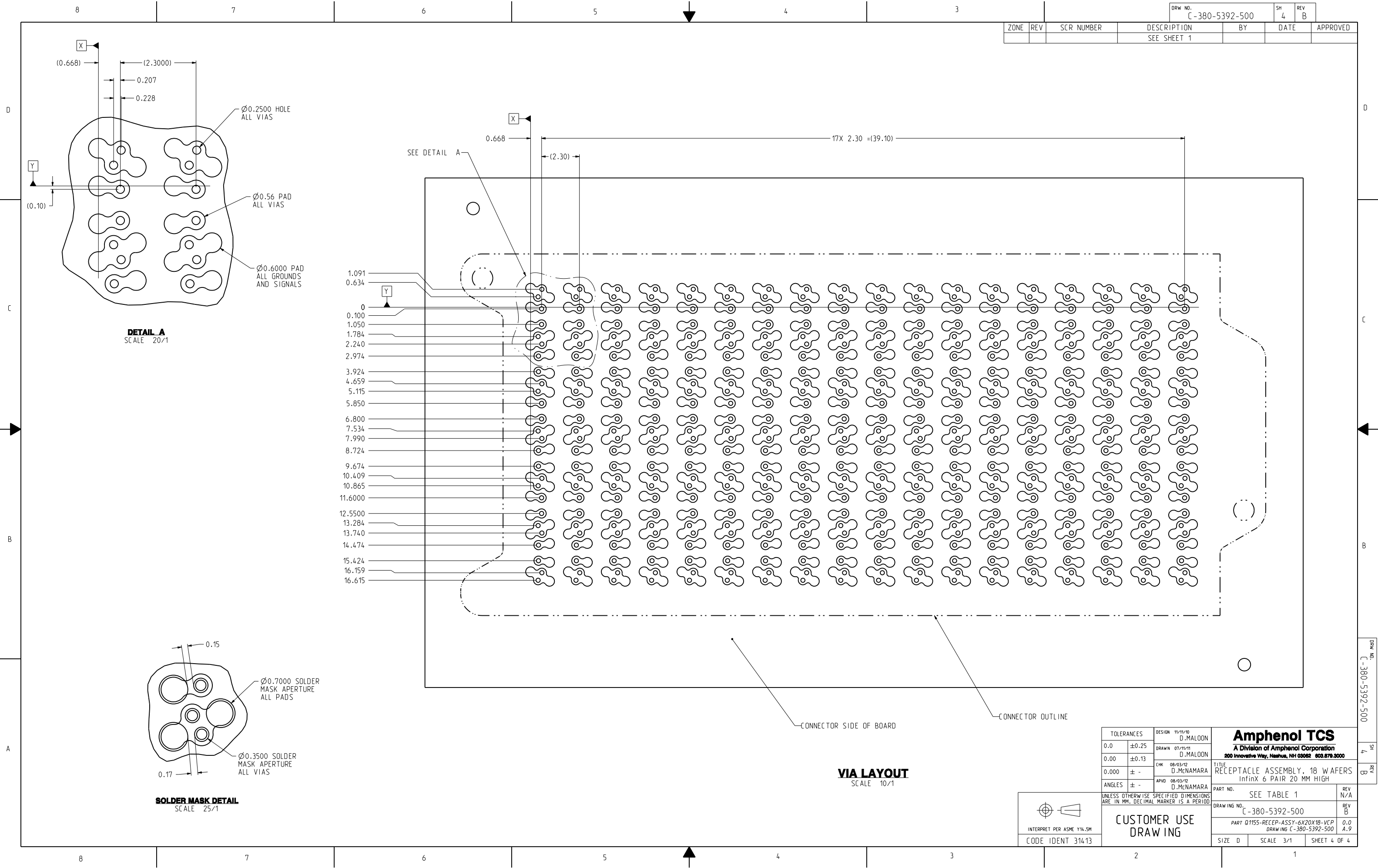
DRW NO.  
C-380-5392-500

SH  
1

REV  
B



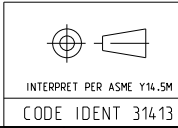




ZONE		REV	SCR NUMBER	DESCRIPTION	BY	DATE	APPROVED
				SEE SHEET 1			

DRW NO.	SH	REV
C-380-5392-500	4	B

TOLERANCES		DESIGN 11/11/10 D.MALOON	<b>Amphenol TCS</b> A Division of Amphenol Corporation 200 Innovative Way, Nashua, NH 03062 603.879.3000	
0.0	±0.25	DRAWN 07/11/11 D.MALOON		
0.00	±0.13	CHK 08/03/12 D.McNAMARA		
0.000	± -	APVD 08/03/12 D.McNAMARA		
ANGLES	± -		PART NO. SEE TABLE 1	REV N/A
UNLESS OTHERWISE SPECIFIED DIMENSIONS ARE IN MM. DECIMAL MARKER IS A PERIOD			DRAWING NO. C-380-5392-500	REV B
CUSTOMER USE DRAWING			PART 01155-RECEP-ASSY-6X20X18-VCP DRAWING C-380-5392-500	0.0 A.9
			SIZE D	SCALE 3/1
			SHEET 4 OF 4	



INTERPRET PER ASME Y14.5M  
CODE IDENT 314-13

# Mouser Electronics

Authorized Distributor

Click to View Pricing, Inventory, Delivery & Lifecycle Information:

[Amphenol:](#)

[380-5392-200](#)