

# Customer Information Sheet

DRAWING No.: M300-3240696M1

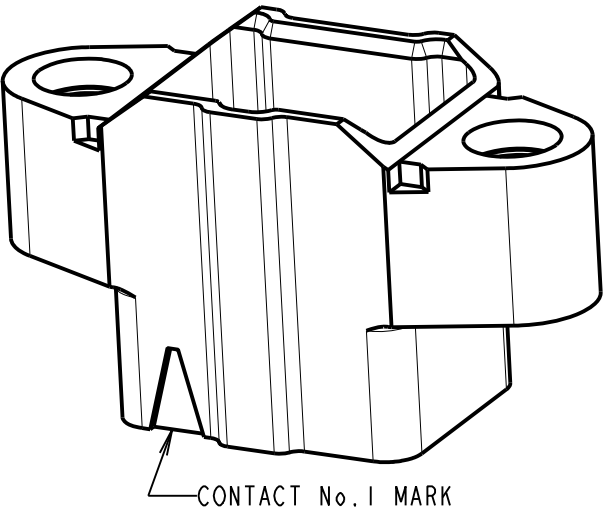
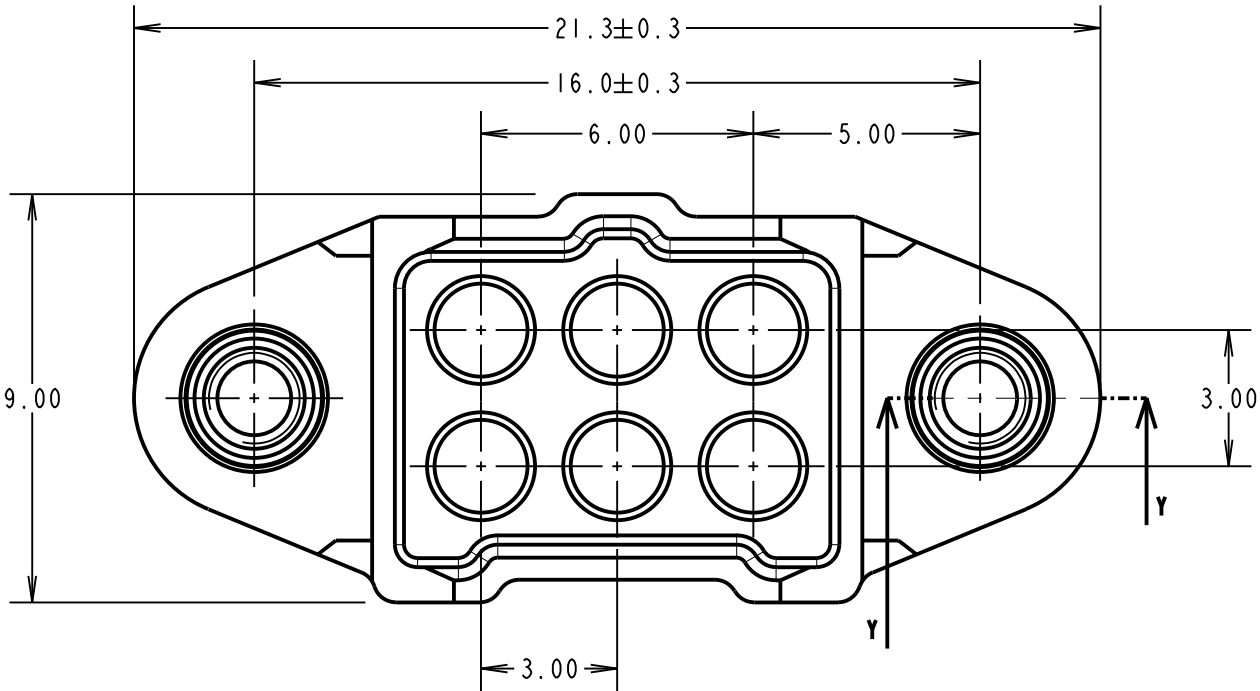
IF IN DOUBT - ASK

(C)

NOT TO SCALE

THIRD ANGLE PROJECTION

ALL DIMENSIONS IN mm



SPECIFICATIONS:

MATERIAL:

MOULDING = GLASS-FILLED PA46 UL94V-0, GREEN

CONTACT = BRASS

JACKSCREW = STAINLESS STEEL

FINISH:

CONTACT = 0.25-0.3µ GOLD OVER NICKEL

ELECTRICAL:

CURRENT RATING:

5A MAX WITH 22 AWG M300-1020045 CONTACTS

10A MAX WITH 18 AWG M300-1010045 CONTACTS

WORKING VOLTAGE = 600V AC/DC

VOLTAGE PROOF = 1800V AC/DC

CONTACT RESISTANCE = 6mΩ MAX

INSULATION RESISTANCE = 100MΩ MIN

MECHANICAL:

DURABILITY = 1000 OPERATIONS

INSERTION FORCE (Ø1.0mm GAUGE) = 9.0N MAX

WITHDRAWAL FORCE (Ø1.0mm GAUGE) = 1.0N MIN

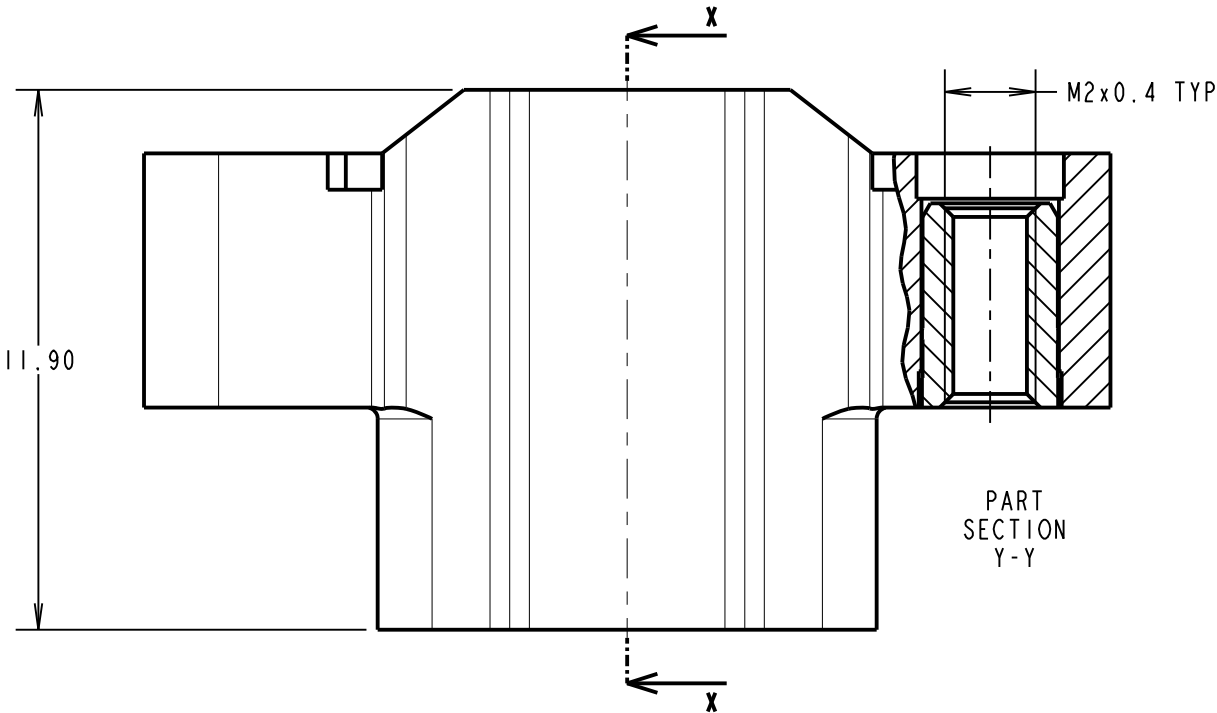
ENVIRONMENTAL:

TEMPERATURE RANGE = -65°C TO +175°C

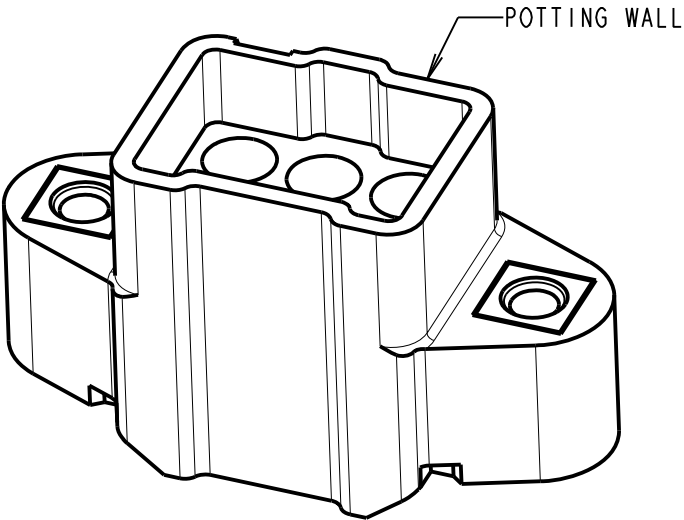
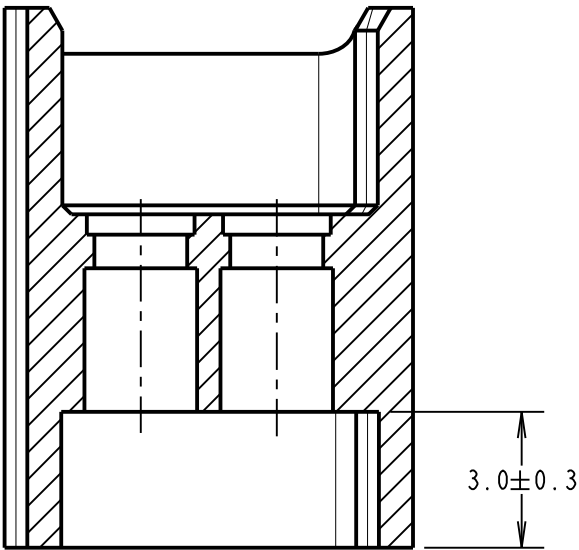
PACKING:

BAG

FOR COMPLETE SPECIFICATION, SEE COMPONENT SPECIFICATION C048XX (LATEST ISSUE)



SECTION X-X



- NOTES:
- FOR USE WITH M300-1010045 & M300-1020045 CONTACTS (NOT INCLUDED). M300-0010045 CONTACTS ARE SUITABLE FOR WIRE GAUGE 18 & 20 AWG. MAXIMUM INSULATION DIAMETER Ø1.80mm. M300-0020045 CONTACTS ARE SUITABLE FOR WIRE GAUGE 22 AWG. MAXIMUM INSULATION DIAMETER Ø1.40mm. BS3G210 TYPE A WIRE RECOMMENDED.
  - RECOMMENDED CRIMP TOOL = M22520/2-01, POSITIONER = Z80-058.
  - FOR INSTRUCTIONS ON HAND CRIMP TOOL M22520/2-01, SEE INSTRUCTION SHEET IS-01. STRIP WIRE BY 2.00mm FOR CRIMPING.
  - RECOMMENDED MATING PIN SIZE = Ø1.05-0.90mm.

HARWIN

www.harwin.com  
technical@harwin.com

THIS DRAWING AND ANY INFORMATION OR DESCRIPTIVE MATTER SET OUT HEREON ARE CONFIDENTIAL AND COPYRIGHT PROPERTY OF THE HARWIN GROUP AND MUST NOT BE DISCLOSED, LOANED, COPIED OR USED FOR MANUFACTURING, TENDERING OR FOR ANY OTHER PURPOSE WITHOUT THEIR WRITTEN PERMISSION.

TOLERANCES

X. = ±1mm  
X.X = ±0.50mm  
X.XX = ±0.10mm  
X.XXX = ±0.01mm  
ANGLES = ±5°  
UNLESS STATED

MATERIAL:

SEE ABOVE

FINISH: SEE ABOVE

S/AREA: mm²

TITLE: 1mm POWER CONNECTOR  
DIL CRIMP HOUSING WITH  
POTTING WALL MALE ASSEMBLY

DRAWING NUMBER:  
M300-3240696M1

MGP	I	30.03.15	12872
NAME	ISS.	DATE	C/NOTE
APPROVED: MGP			
CHECKED: SB			
DRAWN: MARK G PLESTED			
CUSTOMER REF.:			
ASSEMBLY DRG:			

SHT  
2  
OF  
2

# Mouser Electronics

Authorized Distributor

Click to View Pricing, Inventory, Delivery & Lifecycle Information:

Harwin:

M300-3240696M1