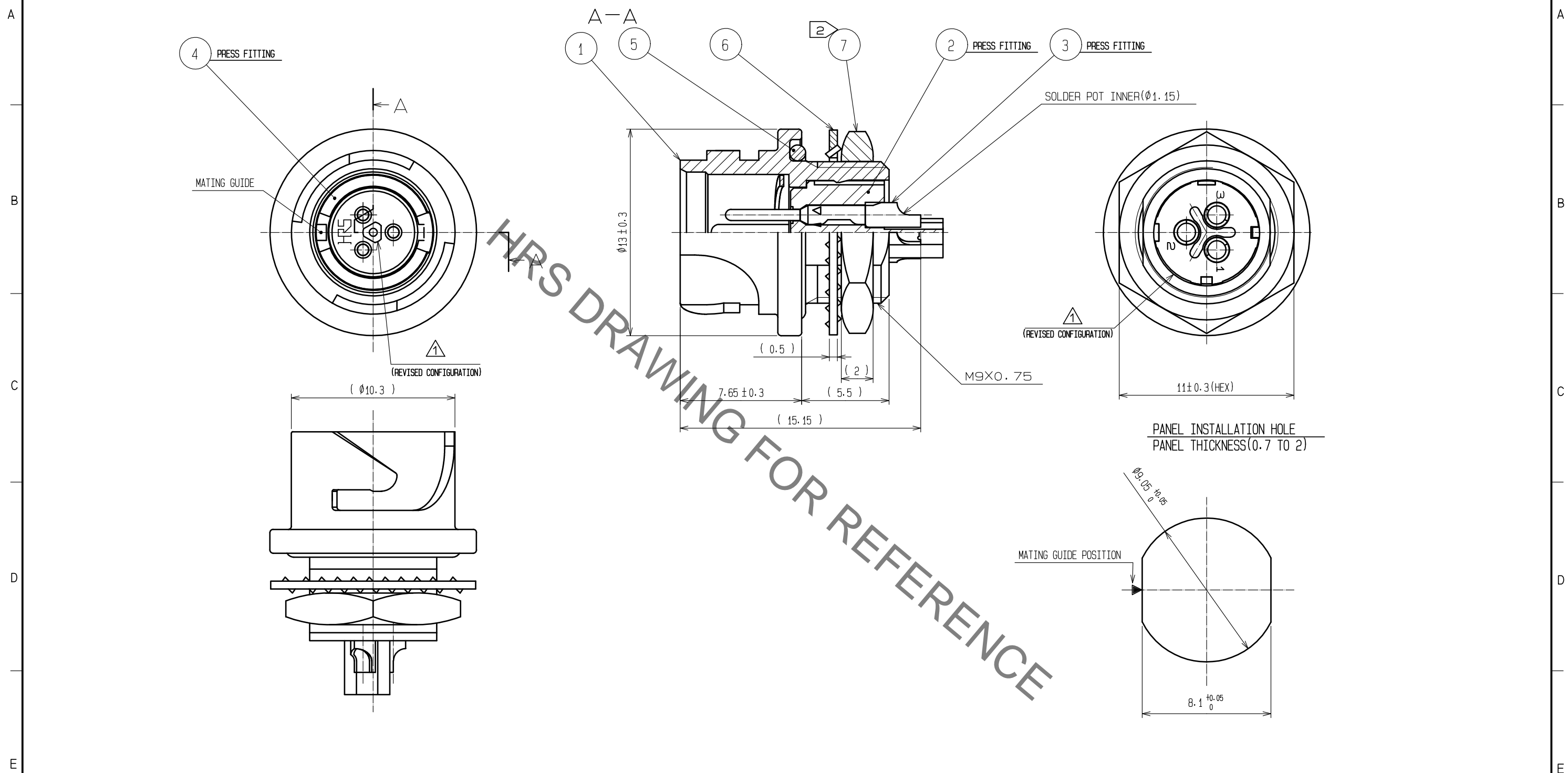


Jan.1.2022 Copyright 2022 HIROSE ELECTRIC CO., LTD. All Rights Reserved.
In case of consideration for using Automotive equipment / device which demand high reliability, kindly contact our sales window correspondents.



NOTES

- ① PLATING(REF.NO.③)
CONTACT AREA : GOLD 0.2 μ m min
OTHERS : GOLD AND NICKEL
UNDER PLATING : NICKEL 2 μ m min
- ② THE RECOMMENDED CLAMP TORQUE OF REF.NO.⑦ TO BE 1.5 TO 2N·m.
THREAD LOCKER TO THE THREADED PORTION OF REF.NO.① IS RECOMMENDED TO PREVENT REF.NO.⑦ FROM LOOSING.
- ③ RECOMMENDED THREAD LOCKER:LOCTITE 263, HENKEL JAPAN LTD.
- ④ WHEN THIS CONNECTOR IS MOUNTED ON TO PANEL, BE CAREFUL REF.NO.⑤ IS ASSEMBLED SURELY INTO THE GROOVE OF REF.NO.① AS SHOWN IN THIS FIGURE TO KEEP WATERPROOF EFFECTIVENESS.

4	PHOSPHOR BRONZE	NICKEL PLATING			
3	COPPER ALLOY	①	7	STEEL	NICKEL PLATING
2	PPS	(BLACK) UL94V-0	6	STEEL	NICKEL PLATING
1	ZINC ALLOY	NICKEL PLATING	5	CHLOROPRENE RUBBER	(BLACK)
NO.	MATERIAL	FINISH , REMARKS	NO.	MATERIAL	FINISH , REMARKS
UNITS mm		SCALE 4 : 1	COUNT 3	DESCRIPTION OF REVISIONS DIS-C-00001698	DESIGNED HY. KISHI
		APPROVED : MR. YOSHIDA	05.01.05	DRAWING NO.	EDC3-114148-00
		CHECKED : MO. SATOH	05.01.05	PART NO.	LF07WBR-3P
		DESIGNED : YH. YAMADA	05.01.05	CODE NO.	CL136-1003-2-00
		DRAWN : YH. YAMADA	05.01.05		
					1/1

Mouser Electronics

Authorized Distributor

Click to View Pricing, Inventory, Delivery & Lifecycle Information:

[Hirose Electric:](#)

[LF07WBR-3P](#)