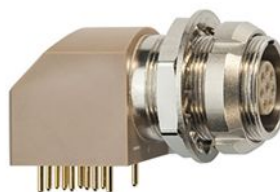


## SUMMARY

### # Wires

Low voltage 5



*Image is for illustrative purpose only*

|                  |                                   |
|------------------|-----------------------------------|
| Series           | 1B                                |
| Termination type | Female print PCB                  |
| IP rating        | 50                                |
| AWG wire size    | 30.00 - 22.00                     |
| Cable Ø          | 0.00 - 0.00 mm                    |
| Status           | active                            |
| Matching parts   | <a href="#">FGA.1B.305.CLAD42</a> |

### Download

[Request a quote](#)  
[PCB Eagle Pattern](#)  
[PCB Altium Pattern](#)  
[PCB KiCad Pattern](#)  
[Catalog](#)

## TECHNICAL DETAILS

### Mechanics

|                   |   |
|-------------------|---|
| Shell Style/Model | EX*: Elbow receptacle for printed circuit with two nuts (solder or screw fixing, back panel mounting) |
| Keying            | 2 keys (alpha=30, plug: male contacts, receptacle: female contacts)                                   |
| Housing Material  | PPS (Polyphenylene) shell, other pieces nickel plated [SAE AMS QQ N 290] brass                        |
| Weight            | 14.50 g   |

### Performance

|               |                            |
|---------------|----------------------------|
| Configuration | 1B.305/EXG : 5 Low Voltage |
| Insulator     | L: PEEK (UL 94 / V-0/1.5)  |
| Rated Current | 4.5 Amps                   |

### Specifications

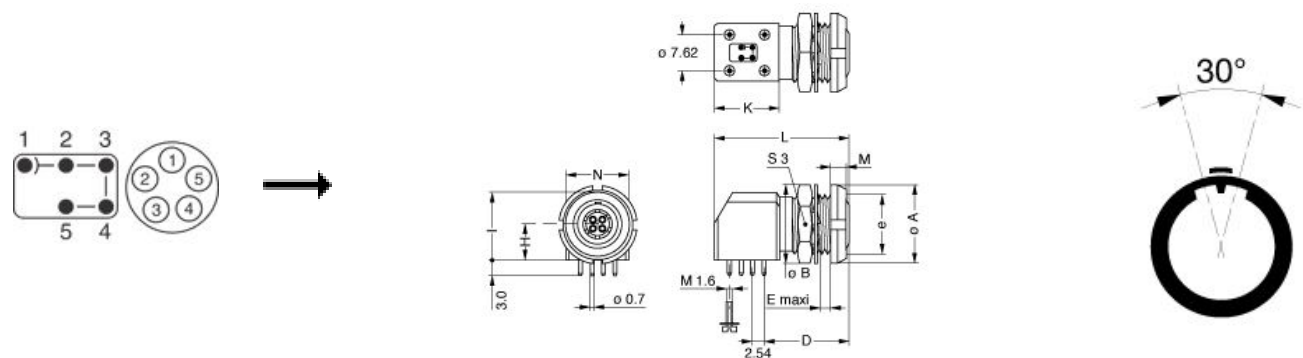
Contact Type: Print (straight)  
Contact Dia.: 0.9 mm (0.035in)  
R (max): 4.8 mOhm  
Test voltage contact-contact : 1.3 kV rms  
Test voltage contact-body shell : 1.55 kV rms

### Others

LEMO products and services are provided "as is". LEMO makes no warranties or representations with regard to LEMO product & services or use of them, express, implied or statutory, including for accuracy, completeness, or security. The user is fully responsible for his products and applications using LEMO components.

Endurance (Shell): 5000  
Temp (min / max): -55° C / +250° C  
Humidity (max): <=95% [at 60 deg C / 140 F]  
Vibration: 15 g [10 Hz - 2000 Hz]  
Shock Resistance: 100 g [ 6 ms]  
Climatical Category: 50/175/21  
Shielding (min): 75 dB (10 MHz)  
Shielding (min): 40 dB (1 GHz)  
Salt Spray Corrosion: >144 hr

## DRAWINGS



### Dimensions

|     | A    | B    | D    | E    | H    | I    | K    | L    | M    | N    | S3   | e       |
|-----|------|------|------|------|------|------|------|------|------|------|------|---------|
| mm. | 14   | 15   | 16.6 | 7.5  | 7.5  | 14   | 13.3 | 27   | 3.5  | 12.6 | 13   | M11x0.5 |
| in. | 0,55 | 0,59 | 0,65 | 0,30 | 0,30 | 0,55 | 0,52 | 1,06 | 0,14 | 0,50 | 0,51 |         |

## RECOMMENDED BY LEMO

### Tools

LEMO products and services are provided “as is”. LEMO makes no warranties or representations with regard to LEMO product & services or use of them, express, implied or statutory, including for accuracy, completeness, or security. The user is fully responsible for his products and applications using LEMO components.

*LEMO products and services are provided "as is". LEMO makes no warranties or representations with regard to LEMO product & services or use of them, express, implied or statutory, including for accuracy, completeness, or security. The user is fully responsible for his products and applications using LEMO components.*

# Mouser Electronics

Authorized Distributor

Click to View Pricing, Inventory, Delivery & Lifecycle Information:

LEMO:

[EXA.1B.305.HLN](#)