

# Protection Relays

## ELCT SERIES

### Current Transformer



### Description

The ELCT series is a sensitive current transformer with integrated flux conditioner used with Littelfuse relays to detect low levels of earth-leakage current.

### Accessories



#### CBLTP

Twisted-pair wire for connection to CT.  
Order in desired length in meters.

### Ordering Information

ORDERING NUMBER	TURNS RATIO	WINDOW SIZE, ID	WEIGHT
ELCT5-31	100:1	31mm (1.22 in)	127.0 g (0.28 lbs)
ELCT5-88	100:1	88mm (3.46 in)	635.0 g (1.40 lbs)
ELCT30-31	600:1	31mm (1.22 in)	131.5 g (0.29 lbs)
ELCT30-88	600:1	88mm (3.46 in)	680.4 g (1.50 lbs)

### Specifications

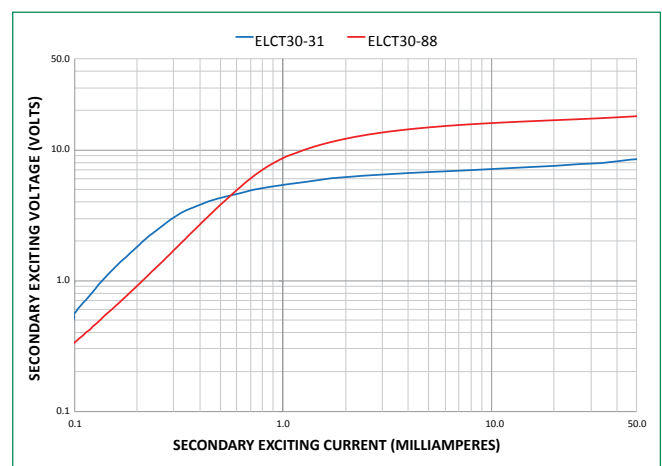
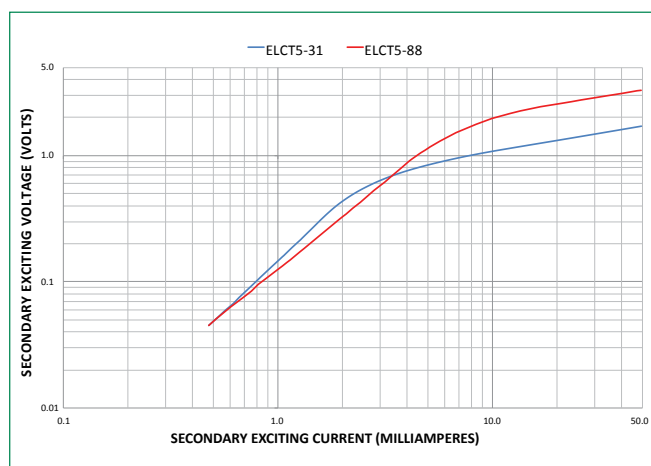
<b>Current Rating</b>	<b>ELCT5:</b> 5:0.05 A <b>ELCT30:</b> 30:0.05 A
<b>Accuracy</b>	<b>ELCT5:</b> 3% @ 0.01 VA <b>ELCT30:</b> 3% @ 0.06 VA
<b>Frequency</b>	50 to 400 Hz
<b>Insulation Level</b>	600 V
<b>Operating Temperature</b>	-40 to 55 °C (-40 to 131 °F)
<b>Application</b>	SE-701
<b>Wire Gauge</b>	0.05–3.3mm <sup>2</sup> (12–30 AWG)
<b>Tightening Torque</b>	0.5 N-m
<b>Certification</b>	UL, cUL, CE
<b>Compliance</b>	RoHS, IEC 61869-2, ANSI/IEEE C57.13

Note: One frequency response may be extended for specific product families

### Recommended Relay

Series: SE-330

SE-704 (ELCT30-series)



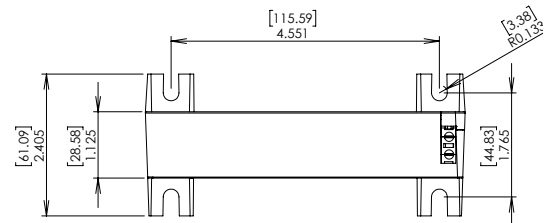
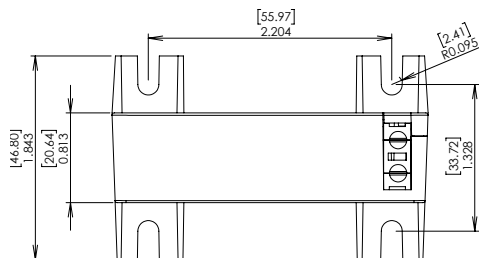
# Protection Relays

## ELCT SERIES

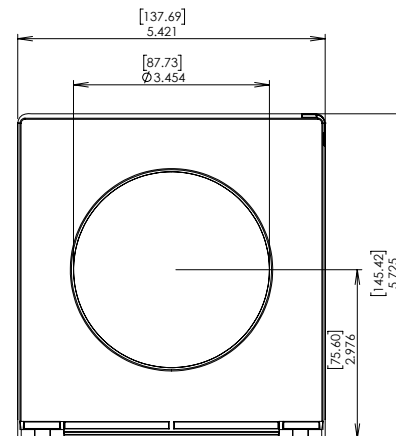
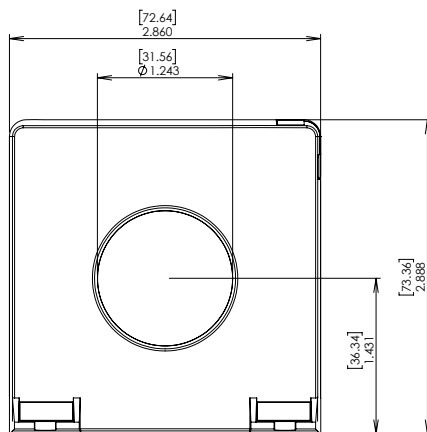
### Dimensions and Mounting Diagram

#### Inches [millimeters]

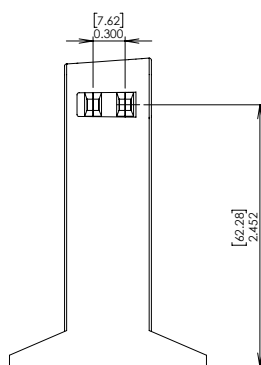
Mount the ELCT5-31 and ELCT30-31 using M5 or #10 screws.  
Mount the ELCT5-88 and ELCT30-88 using M6 or ¼" screws.



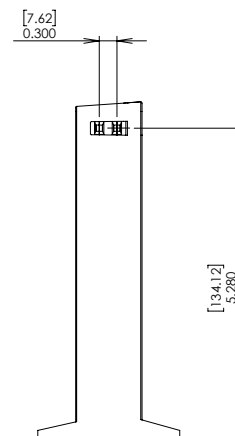
### TOP VIEW AND MOUNTING DETAIL



### FRONT VIEW



ELCT5-31 and ELCT30-31



ELCT5-88 and ELCT30-88

### SIDE VIEW

**Disclaimer Notice** – Information furnished is believed to be accurate and reliable. However, users should independently evaluate the suitability of and test each product selected for their own applications. Littelfuse products are not designed for, and may not be used in, all applications. Read complete Disclaimer Notice at [www.littelfuse.com/product-disclaimer](http://www.littelfuse.com/product-disclaimer).

# Mouser Electronics

Authorized Distributor

Click to View Pricing, Inventory, Delivery & Lifecycle Information:

[Littelfuse:](#)

[ELCT30-88](#) [ELCT30-31](#) [ELCT5-88](#) [ELCT5-31](#)