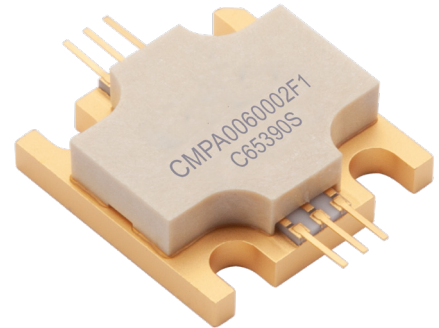


CMPA0060002F1

2 W, DC - 6.0 GHz, GaN MMIC Power Amplifier

Description

The CMPA0060002F1 is a gallium nitride (GaN) High Electron Mobility Transistor (HEMT) based monolithic microwave integrated circuit (MMIC). GaN has superior properties compared to silicon or gallium arsenide, including higher breakdown voltage, higher saturated electron drift velocity and higher thermal conductivity. GaN HEMTs also offer greater power density and wider bandwidths compared to Si and GaAs transistors. This MMIC employs a distributed (traveling-wave) amplifier design approach, enabling extremely wide bandwidths to be achieved in a small footprint screw-down package featuring a copper-tungsten heat sink.



PN: CMPA0060002F1
Package Type: 440219

Typical Performance Over 20 MHz - 6.0 GHz ($T_c = 25^\circ\text{C}$)

Parameter	20 MHz	0.5 GHz	1.0 GHz	2.0 GHz	3.0 GHz	4.0 GHz	5.0 GHz	6.0 GHz	Units
Small Signal Gain	21.4	19.3	18.2	16.7	17.1	18.0	19.2	16.8	dB
Saturated Output Power, P_{SAT}^1	5.9	5.5	5.7	4.8	4.5	4.6	4.6	3.3	W
Power Gain @ P_{SAT}^1	12.5	11.1	10.6	8.8	10.1	9.1	8.2	7.8	dB
PAE @ P_{SAT}^1	39	31	32	26	24	26	24	18	%

Note¹ P_{SAT} is defined as the RF output power where the device starts to draw positive gate current in the range of 2-4 mA

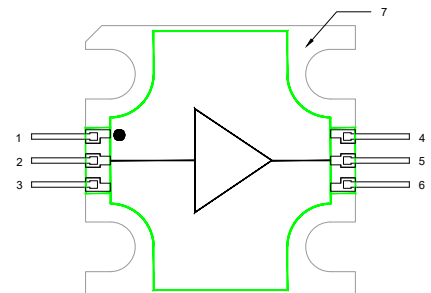
Note² $V_{DD} = 28\text{ V}$, $I_{DQ} = 100\text{ mA}$

Features

- 18 dB Small Signal Gain
- 4.8 W Typical P_{SAT}
- Operation up to 28 V
- High Breakdown Voltage
- High Temperature Operation
- 0.5" x 0.5" Total Product Size

Applications

- Ultra Broadband Amplifiers
- Fiber Drivers
- Test Instrumentation
- EMC Amplifier Drivers



Absolute Maximum Ratings (not simultaneous) at 25°C

Parameter	Symbol	Rating	Units
Drain-Source Voltage	V_{DS}	84	V_{DC}
Gate-Source Voltage	V_{GS}	-10, +2	
Storage Temperature	T_{STG}	-65, +150	°C
Operating Junction Temperature	T_J	225	
Maximum Forward Gate Current	I_{GMAX}	4	mA
Soldering Temperature ¹	T_S	245	°C
Screw Torque	τ	40	in-oz
Thermal Resistance, Junction to Case	$R_{\theta JC}$	4.3	°C/W
Case Operating Temperature ²	T_C	-40, +150	°C

Notes:

¹ Refer to the Application Note on soldering² Measured for the CMPA0060002F1 at $P_{DISS} = 2$ W

Electrical Characteristics ($T_C = 25^\circ\text{C}$)

Characteristics	Symbol	Min.	Typ.	Max.	Units	Conditions
DC Characteristics						
Gate Threshold Voltage ¹	V _{GS(th)}	-3.8	-3.0	—	V	V _{DS} = 20 V, ΔI _D = 2 mA
Gate Quiescent Voltage	V _{GS(Q)}	—	-2.7	—	V _{DC}	V _{DD} = 28 V, I _{DQ} = 100 mA
Saturated Drain Current	I _{DC}	16.2	1.4	—	A	V _{DS} = 6.0 V, V _{GS} = 2.0 V
RF Characteristics						
Small Signal Gain at 20 MHz - 6.0 GHz	S ₂₁	—	15.1	—	dB	V _{DD} = 28 V, I _{DQ} = 100 mA
Input Return Loss at 2.5 - 6.0 GHz	S ₁₁	—	-8.3	—		
Output Return Loss at 2.5 - 6.0 GHz	S ₂₂	—	-10.4	—		
Power Output at 3.5 GHz	P _{OUT1}	—	3.7	—	W	V _{DD} = 28 V, I _{DQ} = 100 mA, P _{IN} = 23 dBm
Power Output at 4.0 GHz	P _{OUT2}	—	3.5	—		
Power Output at 6.0 GHz	P _{OUT3}	—	2.2	—		
Power Added Efficiency at 3.5 GHz	PAE ₁	—	25	—	%	
Power Added Efficiency at 4.0 GHz	PAE ₂	—	27	—		
Power Added Efficiency at 6.0 GHz	PAE ₃	—	19	—		
Power Gain at 3.5 GHz	G _{P1}	—	12.6	—	dB	
Power Gain at 4.0 GHz	G _{P2}	—	12.4	—		
Power Gain at 6.0 GHz	G _{P3}	—	10.5	—		
Output Mismatch Stress	VSWR	—	—	5 : 1	Ψ	No damage at all phase angles, V _{DD} = 48 V, I _{DQ} = 100 mA, P _{IN} = 23 dBm Pulsed

Notes:

¹ The device will draw approximately 20-25 mA at pinch off due to the internal circuit structure

Typical Performance

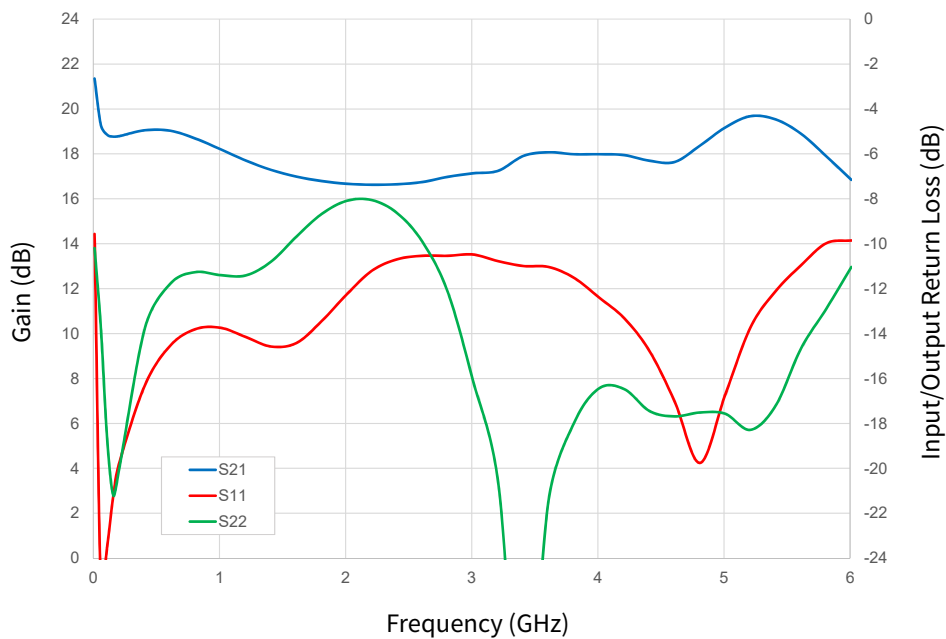


Figure 1. Small Signal Gain and Return Losses vs Frequency
 $V_{DD} = 28\text{ V}$, $I_{DQ} = 100\text{ mA}$

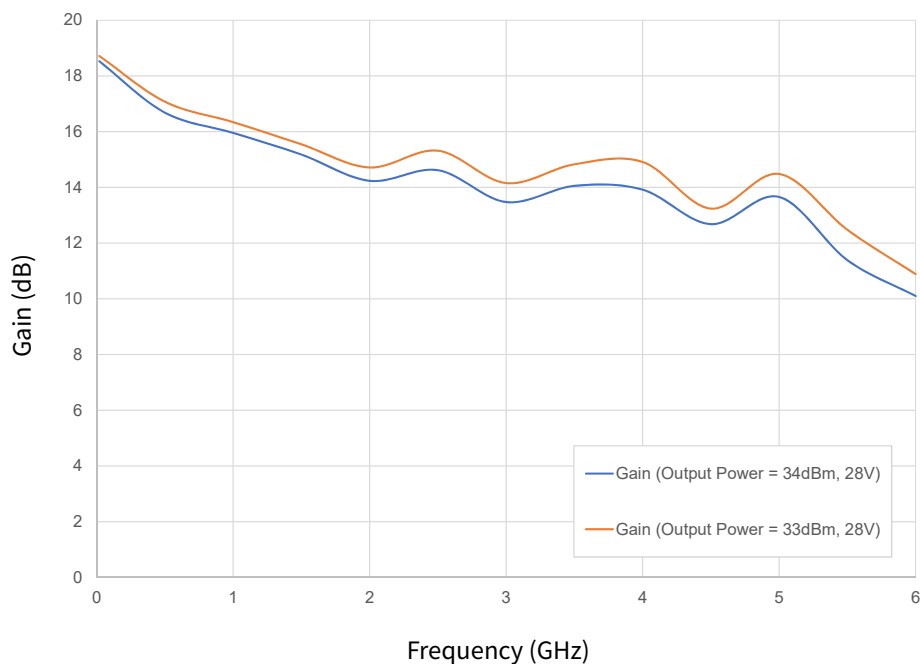


Figure 2. Power Gain vs Frequency
 $V_{DD} = 28\text{ V}$, $I_{DQ} = 100\text{ mA}$

Typical Performance

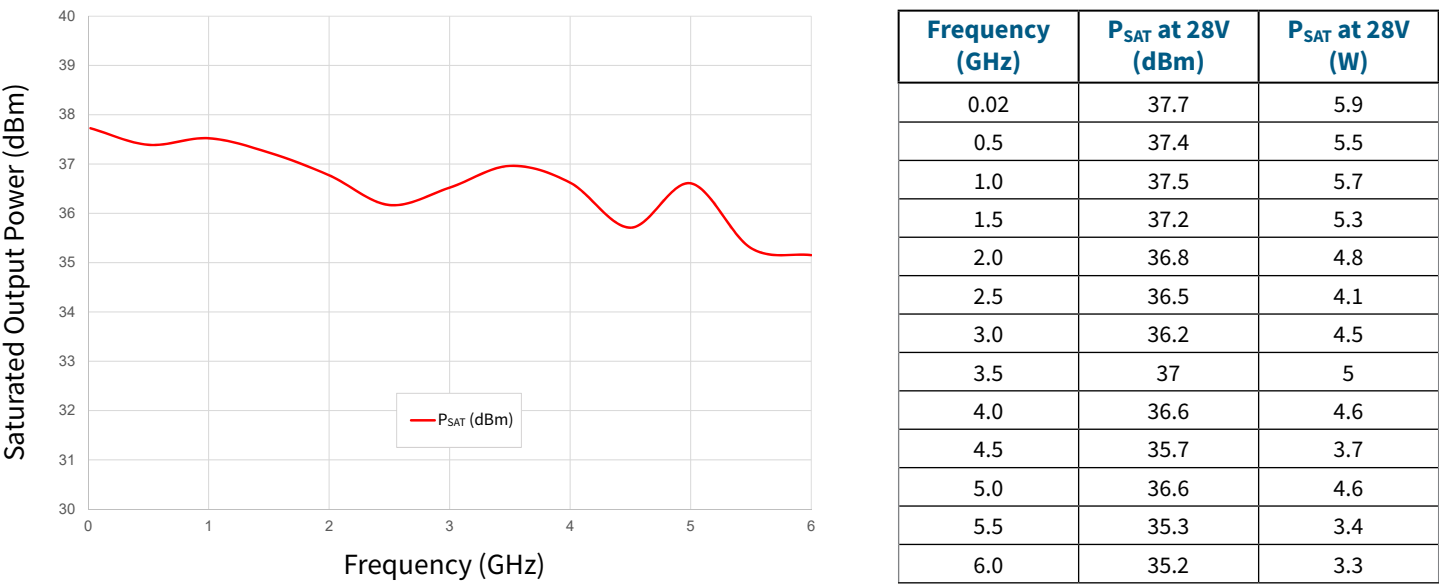


Figure 3. Saturated Output Power Performance (P_{SAT}) vs Frequency
V_{DD} = 28 V, I_{DQ} = 100 mA

Note: P_{SAT} is defined as the RF output power where the device starts to draw positive gate current in the range of 2-4 mA

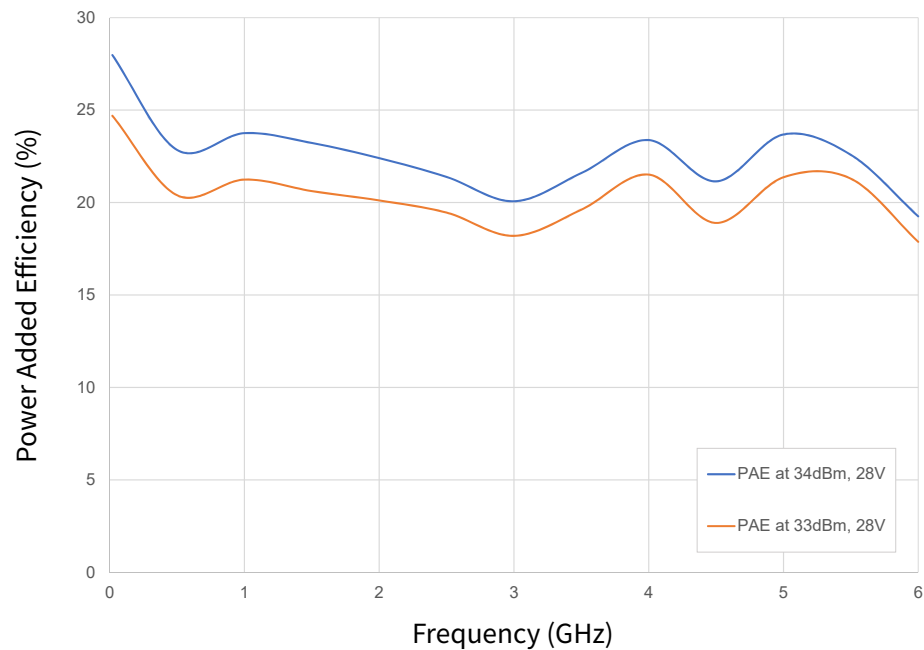


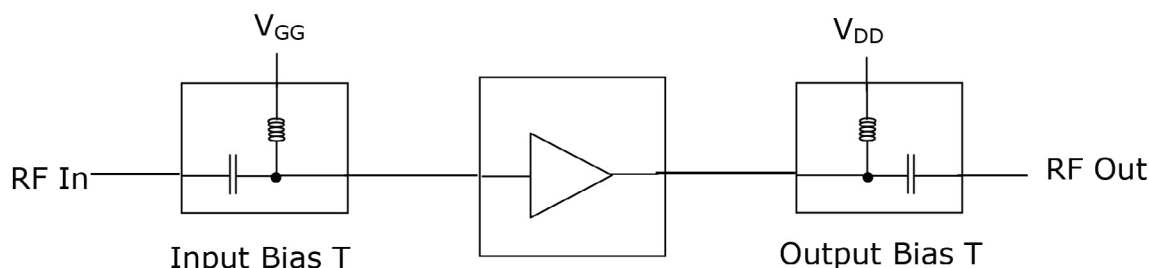
Figure 4. PAE at 33 & 34 dBm Output Power vs Frequency
V_{DD} = 28 V, I_{DQ} = 100 mA

General Device Information

The CMPA0060002F1 is a GaN HEMT MMIC Distributed Driver Amplifier, which operates between 20 MHz - 6.0 GHz. The amplifier typically provides 18 dB of small signal gain and 4.8 W saturated output power with an associated power added efficiency of better than 20%. The wideband amplifier's input and output are internally matched to 50 Ohm. The amplifier requires bias from appropriate Bias-T's, through the RF input and output ports.

The CMPA0060002F1 is provided in a flange package format. The input and output connections are gold plated to enable gold bond wire attach at the next level assembly.

The measurements in this data sheet were taken on devices wire-bonded to the test fixture with 2 mil gold bond wires. The CMPA0060002F1-AMP and the device were then measured using external Bias-T's, (Aeroflex: 8800, SMF3-12; TECDA: AMPT-06M20 or similar), as shown in Figure 5. The Bias-T's were included in the calibration of the test system. All other losses associated with the test fixture are included in the measurements.

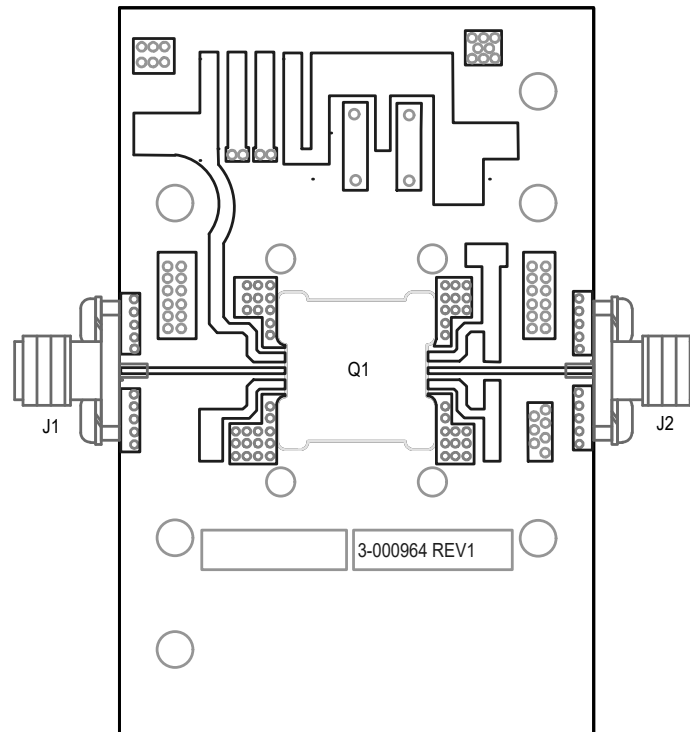


CMPA0060002F1 mounted in the test fixture

Figure 5. Typical test system setup required for measuring CMPA0060002F1-AMP

Electrostatic Discharge (ESD) Classifications

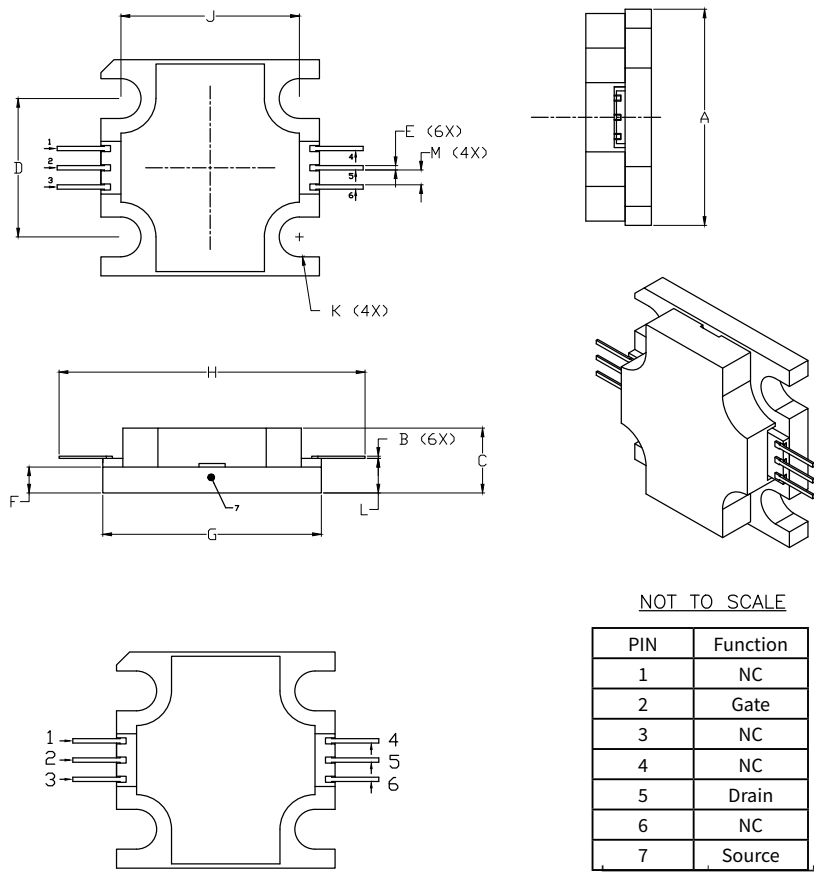
Parameter	Symbol	Class	Classification Level	Test Methodology
Human Body Model	HBM	2	ANSI/ESDA/JEDEC JS-001 Table 3	JEDEC JESD22 A114-D
Charge Device Model	CDM	C3	ANSI/ESDA/JEDEC JS-002 Table 3	JEDEC JESD22 C101-C

CMPA0060002F1-AMP Demonstration Amplifier Circuit Outline

CPMA0060002F1-AMP Demonstration Amplifier Circuit Bill of Materials

Designator	Description	Qty
J1, J2	CONNECTOR, SMA, AMP1052901-1	2
-	PCB, TACONIC, RF-35-0100-CH/CH	1
Q1	CPMA0060002F1	1

Product Dimensions CPMA0060002F1 (Package Type – 440219)



- NOTES:
- 1. DIMENSIONING AND TOLERANCING PER ANSI Y14.5M, 1982.
 - 2. CONTROLLING DIMENSION: INCH.
 - 3. ADHESIVE FROM LID MAY EXTEND A MAXIMUM OF 0.020" BEYOND EDGE OF LID.
 - 4. LID MAY BE MISALIGNED TO THE BODY OF THE PACKAGE BY A MAXIMUM OF 0.008" IN ANY DIRECTION.
 - 5. ALL PLATED SURFACES ARE NI/AU

DIM	INCHES		MILLIMETERS	
	MIN	MAX	MIN	MAX
A	0.495	0.505	12.57	12.82
B	0.003	0.005	0.076	0.127
C	0.140	0.160	3.56	4.06
D	0.315	0.325	8.00	8.25
E	0.008	0.012	0.204	0.304
F	0.055	0.065	1.40	1.65
G	0.495	0.505	12.57	12.82
H	0.695	0.705	17.65	17.91
J	0.403	0.413	10.24	10.49
K	Ø .092		2.34	
L	0.075	0.085	1.905	2.159
M	0.032	0.040	0.82	1.02

Part Number System

CMPA0060002F1

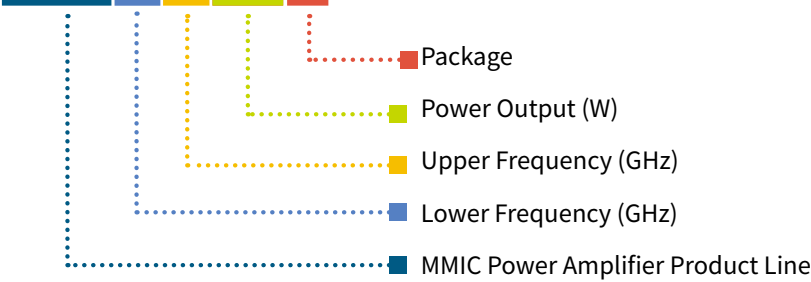


Table 1.

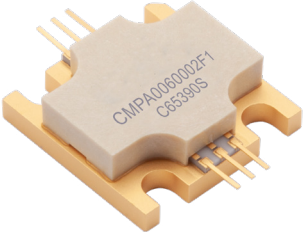
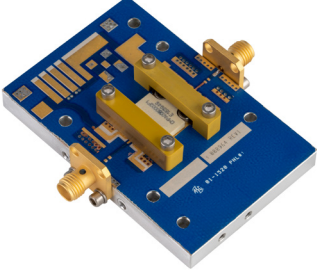
Parameter	Value	Units
Lower Frequency	20	MHz
Upper Frequency ¹	6.0	GHz
Power Output	2	W
Package	Flange	—

Note:
¹ Alpha characters used in frequency code indicate a value greater than 9.9 GHz. See Table 2 for value.

Table 2.

Character Code	Code Value
A	0
B	1
C	2
D	3
E	4
F	5
G	6
H	7
J	8
K	9
Examples:	1A = 10.0 GHz 2H = 27.0 GHz

Product Ordering Information

Order Number	Description	Unit of Measure	Image
CPA0060002F1	GaN MMIC	Each	
CPA0060002F1-AMP	Test board with GaN MMIC installed	Each	

Notes & Disclaimer

MACOM Technology Solutions Inc. ("MACOM"). All rights reserved.

These materials are provided in connection with MACOM's products as a service to its customers and may be used for informational purposes only. Except as provided in its Terms and Conditions of Sale or any separate agreement, MACOM assumes no liability or responsibility whatsoever, including for (i) errors or omissions in these materials; (ii) failure to update these materials; or (iii) conflicts or incompatibilities arising from future changes to specifications and product descriptions, which MACOM may make at any time, without notice. These materials grant no license, express or implied, to any intellectual property rights.

THESE MATERIALS ARE PROVIDED "AS IS" WITH NO WARRANTY OR LIABILITY, EXPRESS OR IMPLIED, RELATING TO SALE AND/OR USE OF MACOM PRODUCTS INCLUDING FITNESS FOR A PARTICULAR PURPOSE, MERCHANTABILITY, INFRINGEMENT OF INTELLECTUAL PROPERTY RIGHT, ACCURACY OR COMPLETENESS, OR SPECIAL, INDIRECT, INCIDENTAL, OR CONSEQUENTIAL DAMAGES WHICH MAY RESULT FROM USE OF THESE MATERIALS.

MACOM products are not intended for use in medical, lifesaving or life sustaining applications. MACOM customers using or selling MACOM products for use in such applications do so at their own risk and agree to fully indemnify MACOM for any damages resulting from such improper use or sale.

Mouser Electronics

Authorized Distributor

Click to View Pricing, Inventory, Delivery & Lifecycle Information:

[MACOM:](#)

[CMPA0060002F1-AMP](#) [CMPA0060002F1](#)