

SPECIFICATIONS:	
STEPS PER REVOLUTION: 200	ROTOR INERTIA: 260 G-CM <sup>2</sup> (1.42 OZ-IN <sup>2</sup> ) NOM
STEP ANGLE: 1.8°	DETENT TORQUE: 408 G-CM ( 5.66 OZ-IN) MIN
STEP TO STEP ACCURACY: ± 5 % <span style="border: 1px solid black; padding: 0 2px;">1</span> , <span style="border: 1px solid black; padding: 0 2px;">2</span>	INSULATION CLASS: B
POSITIONAL ACCURACY: ± 5 % <span style="border: 1px solid black; padding: 0 2px;">1</span> , <span style="border: 1px solid black; padding: 0 2px;">3</span>	BEARINGS: ABEC 3 , DOUBLE SHIELDED
HYSTERESIS: - %	WEIGHT: 0.6 KG (1.32 LB)
SHAFT RUNOUT: 0.05 T.I.R.	TEMP. RISE: 80 °C MAX. <span style="border: 1px solid black; padding: 0 2px;">8</span>
RADIAL PLAY: 0.02 MAX W/A .5KG RADIAL LOAD	OPERATING TEMP. RANGE: -20 TO +50 °C
END PLAY: 0.08 MAX W/A .5KG AXIAL LOAD	STORAGE TEMP. RANGE: -30 TO +70 °C
	RELATIVE HUMIDITY RANGE: 15 TO 85 %

7

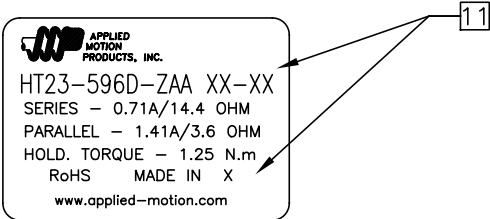
CONNECTION \ SPECIFICATION	NUMBER OF PHASE	RESISTANCE PER PHASE OHM ±10%	INDUCTANCE PER PHASE mH ±20%	RATED CURRENT Amp	RATED VOLTAGE V	HOLDING TORQUE Nm Min
BI-POLAR SERIES	2	14.4	44.0	0.71	10.2	1.25
BI-POLAR PARALLEL	2	3.6	11.0	1.41	5.1	1.25
UNI-POLAR	4	7.2	11.0	1.00	7.2	0.90

1

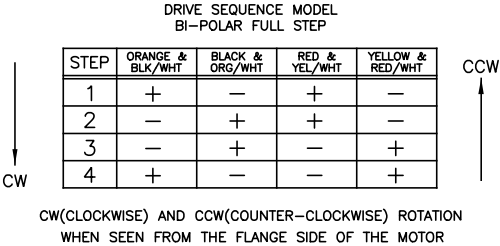
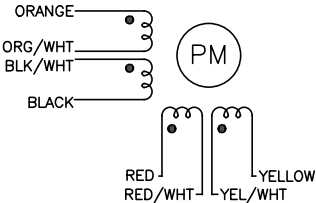
NOTES, UNLESS OTHERWISE SPECIFIED:

- 1 MEASUREMENTS MADE AT RATED CURRENT IN EACH PHASE.
- 2 BETWEEN ANY TWO ADJACENT STEP POSITIONS.
- 3 MAXIMUM ERROR IN 360°.
4. HIPOT 500 VAC, 60 Hz FOR ONE MINUTE.
5. LEADS: 8, 22AWG, 7 STRAND MIN.,UL AND CSA APPROVED, UL 1430 OR UL 3265.
6. INSULATION RESISTANCE: 100 MEGOHMS MIN AT 500 VDC.
- 7 AS MEASURED USING AN A.C. INDUCTANCE BRIDGE, AT 1KHz.
- 8 AS MEASURED BY THE CHANGE IN RESISTANCE METHOD, WITH RATED VOLTAGE APPLIED TO 2 PHASES; WITH MOTOR AT REST.
- 9 ENCODER 970-1001 INSTALLED PER AMP ASSEMBLY PRACTICES. ENCODER CABLE SOLD SEPARATELY..
10. THIS MOTOR TO BE MANUFACTURED IN COMPLIANCE WITH EU DIRECTIVE "ROHS 2002/95/EC".
- 11 MOTOR LABEL TO INCLUDE "ROHS" COMPLIANT, 'MADE IN (COUNTRY OF ORIGIN)' AND DATE CODE.

LABEL DETAIL




WIRING DIAGRAM

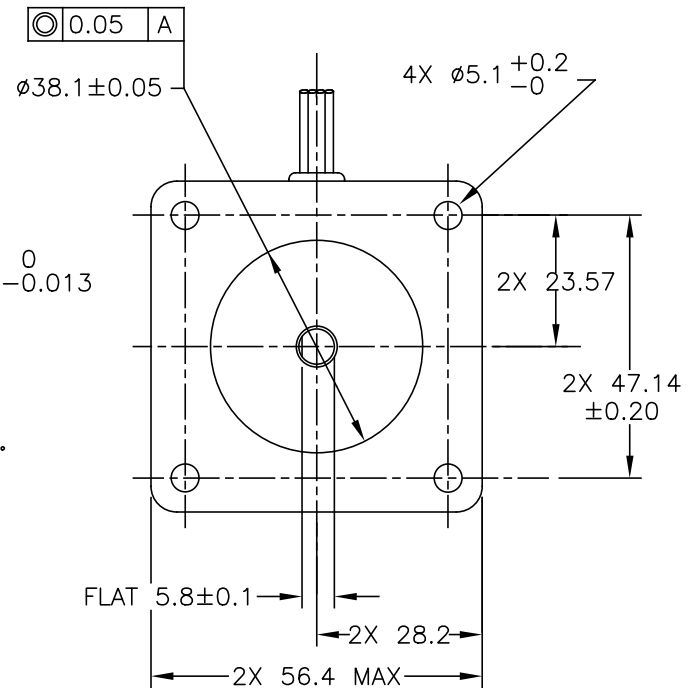
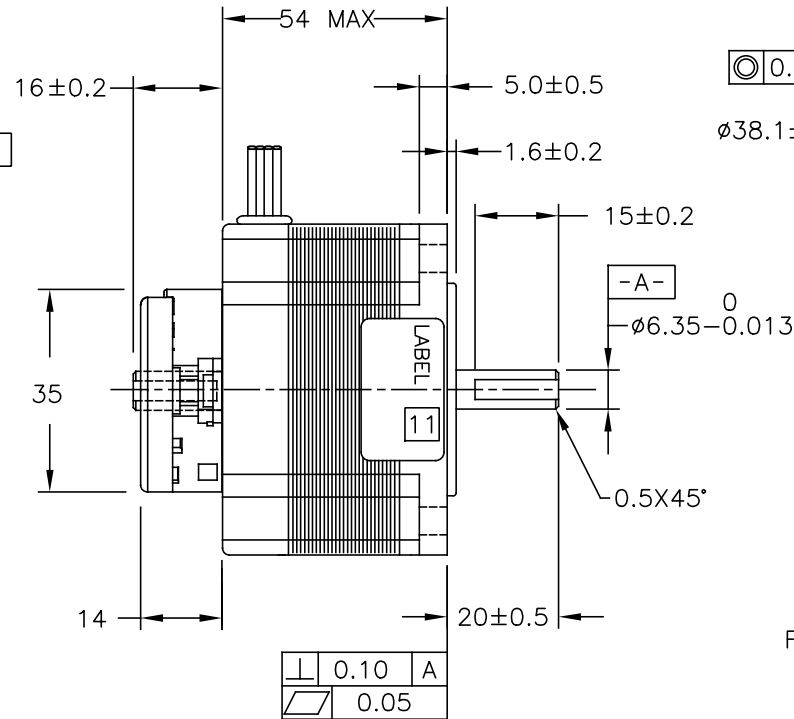
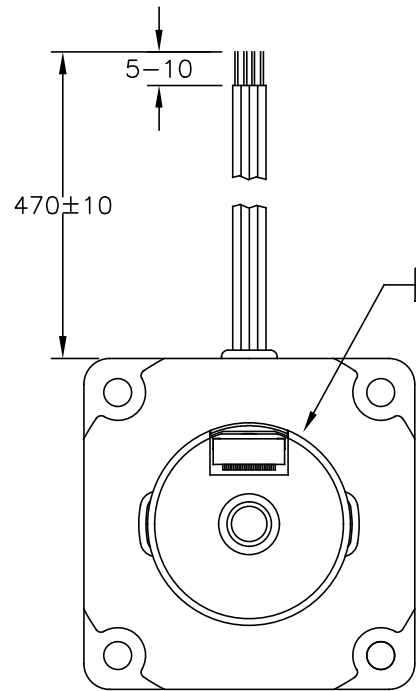


REVISIONS				
ECO NO.	REV	DESCRIPTION	DATE	APPROVED
6941	A	INITIAL RELEASE	6/16/14	J KORDIK
8034	B	CHG REAR SHAFT LENGTH/TYPO	8/28/18	M.Maroney

HT23-596D-ZAA

CONTRACT NO.		 APPLIED MOTION PRODUCTS, INC.			
—					
APPROVALS	DATE	STEP MOTOR OUTLINE			
DRAWN R.JONEZ	3/18/14				
CHECKED					
APPROVED					
APPROVED		B	COMPUTER DATA BASE DRAWING	DWG NO. HT23-596D-ZAA	REV B
APPROVED		SCALE: NONE		SHEET 1 OF 2	

# MOTOR DRAWING

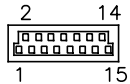



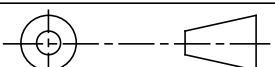
ENCODER RESOLUTION: 2000 cpr  
WITH MARKER PULSE.

## ENCODER PINOUTS

PIN	SIGNAL
1	CH A
2	CH A-
3	CH B
4	CH B-
5	INDEX
6	INDEX-
7	N/C
8	N/C
9	N/C
10	N/C
11	N/C
12	N/C
13	+Vcc
14	GND
15	N/C

9



TOLERANCES		THIRD ANGLE PROJECTION		 APPLIED MOTION PRODUCTS, INC.			
DECIMALS: MM (INCH) X.XXX= ± (.005) X.XX = ±0.13 (.010) X.X = ±0.25 (.020) ANGLES: MACH. = ±.5° CHAM. = ±5°				STEP MOTOR OUTLINE			
COMPUTER DATA BASE DRAWING		APPROVALS	DATE				
		DRAWN <i>R.JONEZ</i>	3/18/14	B	DWG NO. HT23-596D-ZAA	REV B	
		CHECKED			SCALE: NONE		SHEET 2 OF 2
		APPROVED					

# Mouser Electronics

Authorized Distributor

Click to View Pricing, Inventory, Delivery & Lifecycle Information:

[Applied Motion:](#)

[HT23-596D-ZAA](#)