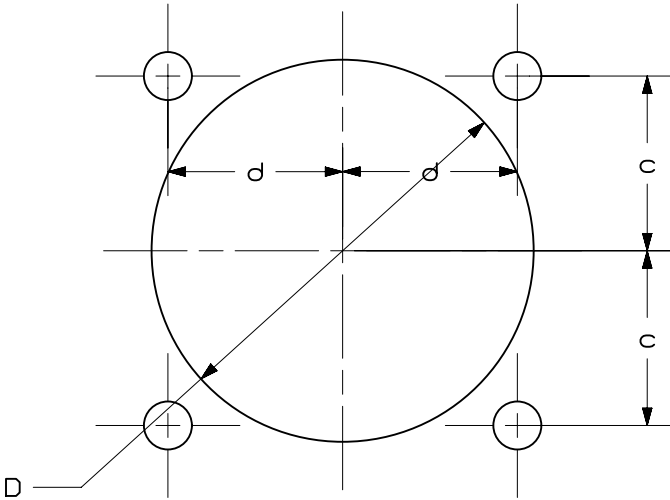


PART



CUTOUT

- NOTES:
1. VISIT OUR ON-LINE CATALOG AT [WWW.PANDUIT.COM](http://WWW.PANDUIT.COM) FOR A LIST OF CURRENT PARTS APPLICABLE FOR USE WITH THIS PRODUCT.
  2. DIMENSIONS IN [ ] ARE METRIC.
  3. ALL MATERIALS AND COMPONENTS USED MEET THE MATERIAL RESTRICTIONS OF RoHS (EUROPEAN DIRECTIVE 2011/65/EU ON THE RESTRICTION OF HAZARDOUS SUBSTANCES) AS PROPOSED BY THE RoHS TECHNICAL ADAPTATION COMMITTEE.
  4. MATERIAL:  
FRAME - POLYPROPYLENE (PP)  
BLOCK - TPE
  5. PROTECTION CLASS WHEN USED WITH CEG GROMMETS:  
NEMA 1,12,4x\*  
IP 65
  6. TEMPERATURE RANGE: -22 - 121 °F
  7. FLAMABILITY: V0
  8. RoHS COMPLIANT
  9. COMPLIANCE cURus
  10. UV RESISTANT
  11. WEIGHT: SEE TABLE

\*Indoor Use



PART NUMBER	A	B	INSTALLATION HEIGHT	NUMBER OF OPENINGS			D	c	d	e	PART WEIGHT	PKG QTY
	in. (mm)	in. (mm)		SMALL	MEDIUM	LARGE	in. (mm)	in. (mm)	in. (mm)	in. (mm)	lbs. (g)	
CEST2-R504	2.44 (62)	2.44 (62)	0.71 (18)	4	-	-	1.99 (50.5)	0.91 (23)	0.91 (23)	0.22 (5.6)	0.137 ( 62)	1

00A	9/13/2022	SERH	MDS	JADE	INITIAL RELEASE	124032/00
REV	DATE	BY	CHK	APR	DESCRIPTION	ECN

PART NUMBER						SEE TABLE					
TITLE						CEST2-R Control Drawing					
ITEM REVISION NAME						CUSTOMER DRAWING					
DATASET FILE NAME						00872EBD_DC/00A					
MATERIAL						SEE NOTE 4					
DRAWING NUMBER						00872EBD-DC					
DRAWN BY						SERH					
DATE						9/13/2022					
CHK						MDS					
SCALE						1:1					
SHEET 1 OF 1						SHEET 1 OF 1					
SIZE						B					

# Mouser Electronics

Authorized Distributor

Click to View Pricing, Inventory, Delivery & Lifecycle Information:

Panduit:

[CEST2-R504](#)