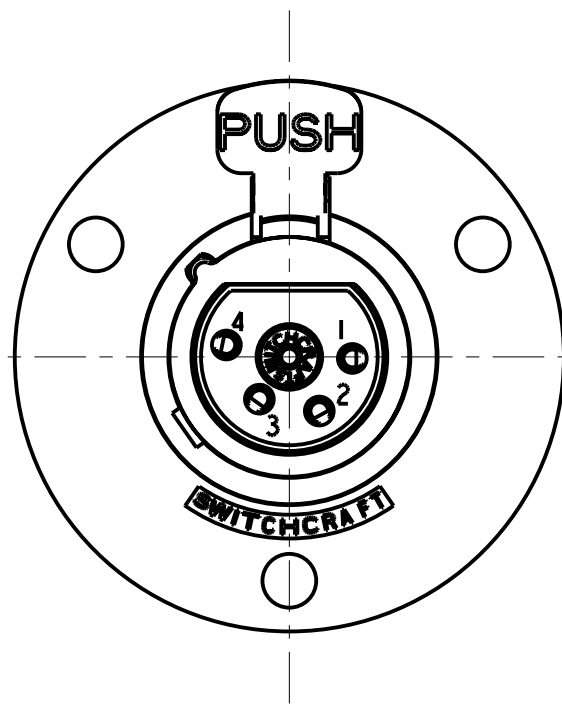
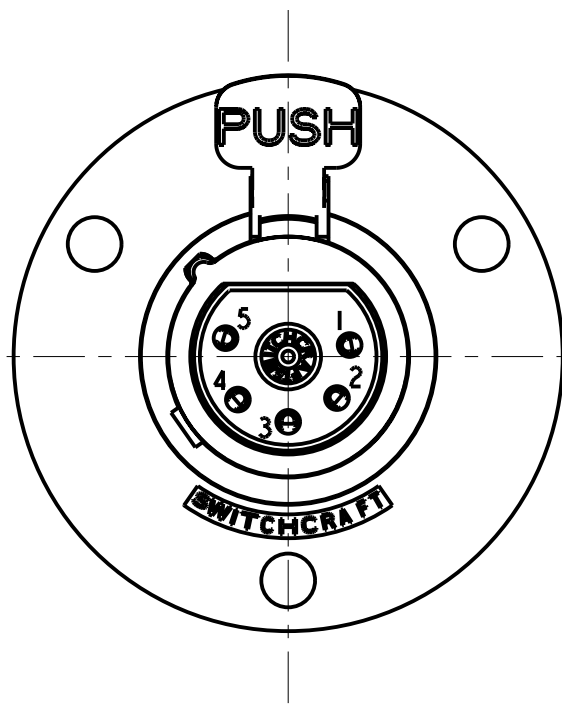


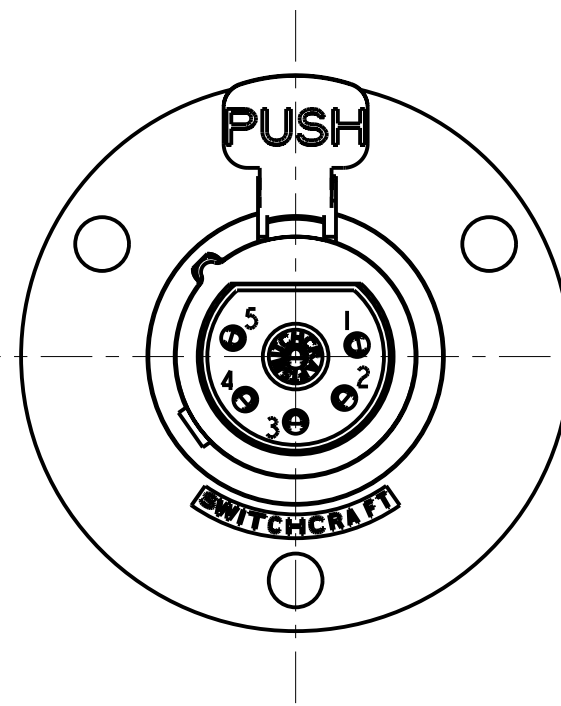
3 PIN



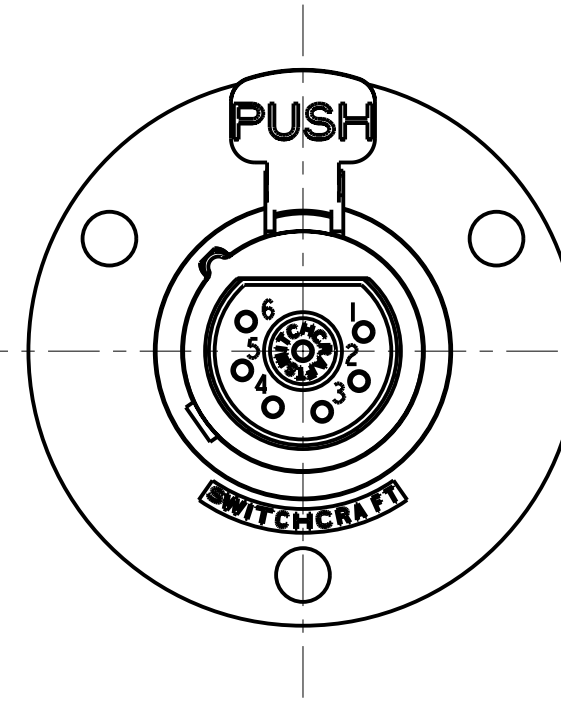
4 PIN



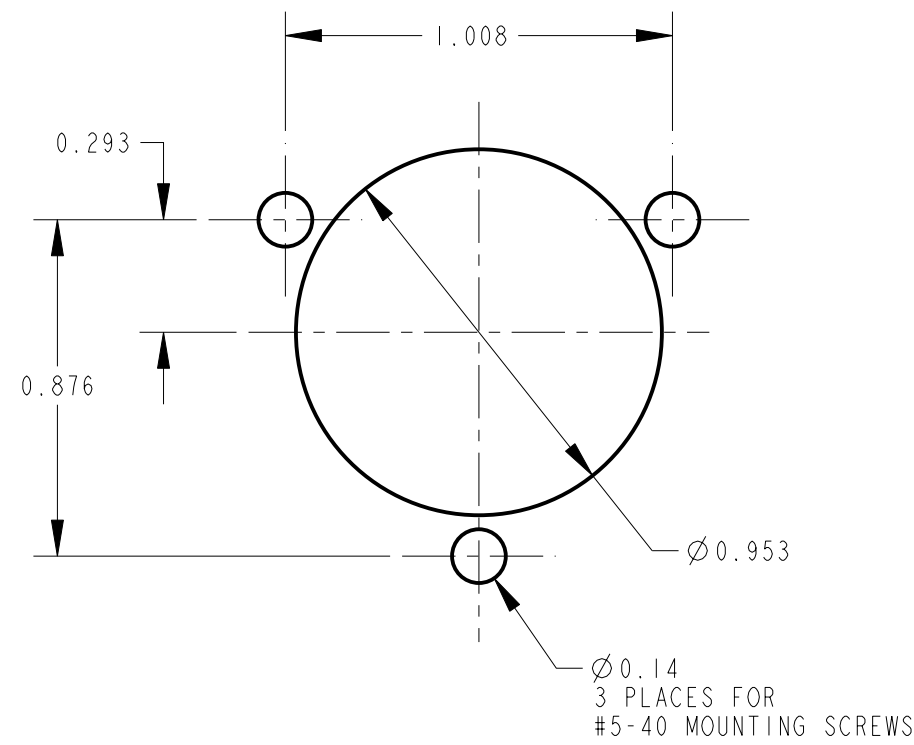
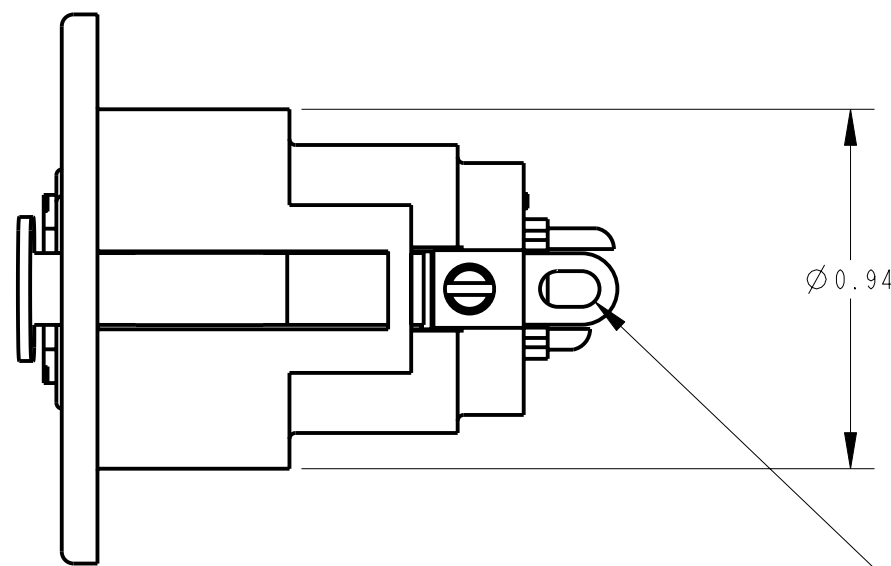
5 PIN



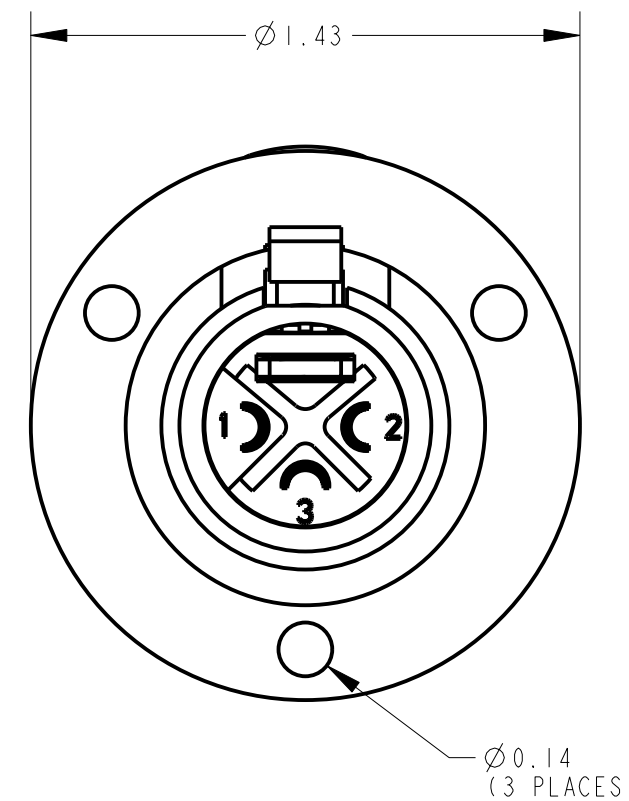
6 PIN



7 PIN



PANEL CUT-OUT



STANDARD SERIES

SCREW - STAINLESS STEEL
SHELL - STAINLESS STEEL
LATCH BUTTON - ZINC, NICKEL PLATED (M)
INSULATOR - POLYESTER, GREEN OR BLACK
SOLDER TERMINAL - BRASS, ELECTRO TIN
LATCH SPRING - STAINLESS STEEL
CONTACT PIN - PHOSPHOR BRONZE, SILVE OR GOLD PLATED
HOUSING - ZINC, NICKEL OR BLACK PLATED
RELEASE LEVER - STEEL, NICKEL OR BLACK PLATED

AU = GOLD
BLANK = SILVER
CONTACT PLATING
HOUSING FINISH SEE NOTE 2
BLANK = TEXTURED (STANDARD)
S = SANDED
BX = BLACK RoHS

NO. OF CONTACTS:
3 = 3 CONTACTS
4 = 4 CONTACTS
5 = 5 CONTACTS
6 = 6 CONTACTS
7 = 7 CONTACTS

PROFESSIONAL SERIES

HOUSING FINISH - MATTE CHROME
CONTACT PLATING - GOLD

OGP - 26
NO. OF CONTACTS:
3 = 3 CONTACTS

NOTES:

1. ALL DIMENSIONS REF. UNLESS OTHERWISE SPECIFIED.

(M) 2. BLACK HOUSING AND INSERT WITH SATIN NICKEL PLATED LATCH.

(M) 3. THIS PRODUCT IS RoHS COMPLIANT.

REV	ECO NUMBER	DATE	BY	APVD
M	26158	10-4-06	TO	TJK
L	23566	10-26-00	RJ	DK
K	22895	9-20-99	DA	RB
REVISIONS				

★ STAR SYMBOL DENOTES CRITICAL DIMENSION				
UNLESS OTHERWISE SPECIFIED				
1. ALL DIMENSIONS IN INCHES				
- TWO PLACE DECIMALS ±0.01				
- THREE PLACE DECIMALS ±0.005				
- ANGLES ±1°				
- ALL DIA. CONCENTRIC WITHIN 0.005 T.I.R.				
2. FEATURES ON THE SAME CENTERLINE MUST BE ALIGNED WITHIN ±0.002				
3. REMOVE ALL BURRS				
DO NOT SCALE DRAWING				

THIS DRAWING DESCRIBES A DESIGN CONSIDERED PROPRIETARY IN NATURE, DEVELOPED AND MANUFACTURED BY SWITCHCRAFT INC. AND IS RELEASED ON A CONFIDENTIAL BASIS FOR IDENTIFICATION PURPOSES ONLY.				
SIZE	WIDTH	MULT	LBS/M	TEMPER
FINISH		MATERIAL		
SPEC No.		SPEC No.		
FIRST USED ON		SCALE 2:1		
DATE DRAWN	BY	CHKD	APVD	Switchcraft®
12-11-93	SG	AA 7-12-94	GHJ 7-12-94	
NAME				SHEET 1 OF 1
C SERIES FEMALE OG, RoHS				REV M

Mouser Electronics

Authorized Distributor

Click to View Pricing, Inventory, Delivery & Lifecycle Information:

Switchcraft:

[C5F](#) [C4F](#) [C3F](#) [C6F](#) [C7F](#)