



| | | | |
|------------------------------|----------|---|------------|
| 8 | | 7 | |
| THIS DRAWING IS UNPUBLISHED. | | RELEASED FOR PUBLICATION | |
| 20 | | 20 | |
| © COPYRIGHT 20 | | BY TYCO ELECTRONICS CORPORATION. ALL RIGHTS RESERVED. | |
| PART NUMBER | REVISION | DESCRIPTION | FEED TYPE |
| 2266284-1 | B | FINE CRIMP HEIGHT ADJUST | MECHANICAL |
| 2266284-2 | B | FINE CRIMP HEIGHT ADJUST | PNEUMATIC |
| 7-2266284-1 | B | MECHANICAL AND CRIMP TOOLING KIT | MECHANICAL |
| 7-2266284-2 | B | PNEUMATIC AND CRIMP TOOLING KIT | PNEUMATIC |
| 7-2266284-7 | A | CRIMP TOOLING KIT | - |

| APPLICATOR DATA | | |
|--------------------------------------|----------------|------|
| CRIMP | SIZE | TYPE |
| WIRE | 3.05 mm [.120] | F |
| INSUL | 4.06 mm [.160] | F |
| APPLICATOR INSTRUCTIONS 408-35042 | | |

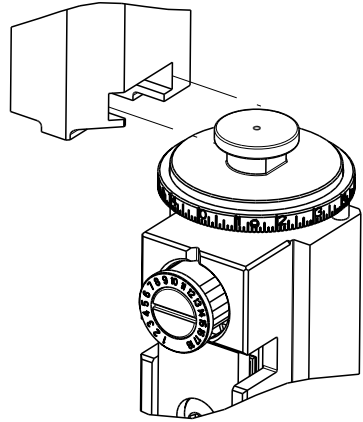
| | | | |
|--|-----------------|---|-----------------|
| TERMINAL DATA: ARKLES TERMINAL | | TE CRIMP SPECIFICATION | |
| TERMINAL NAME: TERMINAL, PIN | | | |
| WIRE STRIP LENGTH 4.65-5.03 mm [.183-.198 IN] | | INSULATION DIAMETER RANGE Ø2.29-3.05 mm [.090-.120 IN] | |
| TERMINAL APPLICATION  | | NONE | |
| SPECIFICATION | | - | |
| TERMINALS APPLIED  | | | |
| TE TERMINAL | ARKLES TERMINAL | TE TERMINAL | ARKLES TERMINAL |
| 1572740-1 | 3800M 92A | | |

| | | |
|-----------|----------------------------|-----------------------------------|
| WIRE SIZE | CRIMP HEIGHT mm [INCH] | CRIMP HEIGHT REFERENCE SETTING |
| 14 AWG | 2.03+/-0.05 [.080+/- .002] | 5.9 |
| 16 AWG | 1.83+/-0.05 [.072+/- .002] | 7.9 |
| 18 AWG | 1.70+/-0.05 [.067+/- .002] | 9.4 |



- 1
- RECOMMENDED SPARE PARTS
- 2
- REFER TO SUPPLIED INSTRUCTION SHEET FOR CLEANING, LUBRICATION AND STORAGE OF APPLICATOR.
- 3
- APPLY PART NUMBER 2-23419-6 LOCTITE TO THREADS OF ITEM 242.
- 4
- CRIMP HEIGHT REFERENCE SETTING WAS THE SETTING USED WHEN THE APPLICATOR WAS QUALIFIED AT THE FACTORY. ADJUSTMENT MAY BE NECESSARY WHEN RUNNING APPLICATOR IN THE FIELD.
- 5
- TERMINAL LUBRICANT IS RECOMMENDED.
6.
- UNLESS SPECIFIED OTHERWISE TORQUE VALUES SHALL BE USED PER DOCUMENT, 101-35000.

ATLANTIC VERSION TERMINATOR
INTERFACE ADAPTER



ATLANTIC VERSION
Shown on sheets 1 of 4 & 2 of 4
(Pacific version shown on sheets 3 of 4 & 4 of 4)

| | | | | | | | | | |
|-----|------|-----------|-----|---------------|--|--|-----------|-----|------|
| 2 | | 1 | | | | | | | |
| LOC | DIST | REVISIONS | | | | | | | |
| A | 66 | P | LTR | DESCRIPTION | | | DATE | DWN | APVD |
| | | | A | RELEASED | | | 29MAY2014 | KH | TE |
| | | | B | ECR-19-005910 | | | 12APR2019 | JAH | TE |
| | | | | | | | | | |
| | | | | | | | | | |

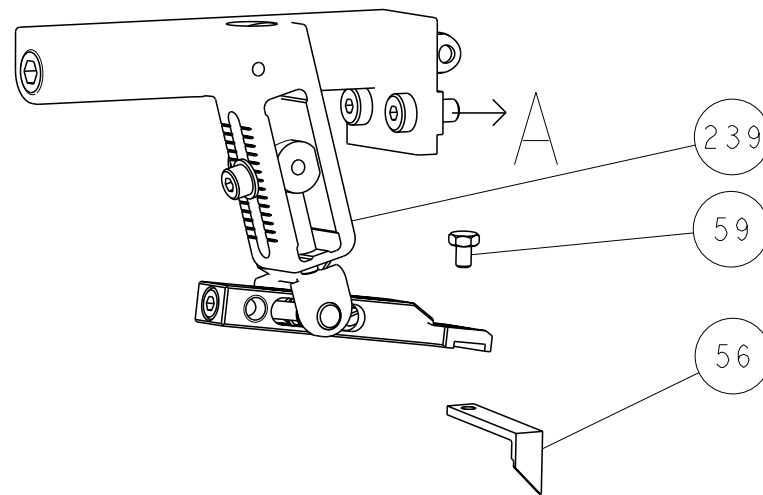
| | | | | | | | | |
|---|-----|-----|-----|-----|-----|-------------|-------------------------------------|---------|
| | - | 1 | - | 1 | - | 2119640-1 | PUSH ROD, AIR FEED | 250 |
| | - | 1 | - | 1 | - | 1803259-1 | BUSHING, FLANGED | 249 |
| | - | 1 | - | 1 | - | 2119641-1 | FEED CAM, AIR FEED | 248 |
| | - | 1 | 1 | 1 | 1 | 2119082-3 | CAM, SNAIL, INSULATION ADJUSTMENT | 244 |
| | - | 1 | 1 | 1 | 1 | 2079764-1 | WASHER, WAVE SPRING, CREST-TO-CREST | 243 |
| 6 | - | 1 | 1 | 1 | 1 | 2119083-1 | RETAINER, INSULATION DIAL | 242 |
| | - | 1 | 1 | 1 | 1 | 7-18023-7 | SCR, SKT HD CAP M3 X 4.0 | 241 |
| | - | - | 1 | - | 1 | 2119580-1 | MECHANICAL FEED ASSEMBLY | 239 |
| | - | 1 | - | 1 | - | 2063440-1 | AIR FEED MODULE | 238 |
| | - | 2 | - | 2 | - | 21045-3 | RING, RETAIN, EXTERN, 3/16 CRESCENT | 172 |
| | - | REF | REF | REF | REF | 994970-2 | COUNTER, MAGNETIC | 164 |
| | - | 1 | - | 1 | - | 240638-1 | SPRING, FEED FINGER | 163 |
| | - | 1 | - | 1 | - | 3-23627-7 | PIN, RETAIN, GRVD, 3/16 X .854 | 137 |
| | - | 1 | - | 1 | - | 2119799-1 | HOLDER,FEED FINGER, AF | 136 |
| 5 | - | 1 | 1 | 1 | 1 | 2119955-1 | ASSY, LUBRICATOR, SIDE FEED | 113 |
| | - | 1 | 1 | 1 | 1 | 2844908-1 | SCREW, LOCKING | 99 |
| | - | 1 | 1 | 1 | 1 | 2844907-1 | POST, LOCKING | 98 |
| | - | 1 | 1 | 1 | 1 | 318563-1 | GUARD, FRONT CHIP | 89 |
| | - | 1 | 1 | 1 | 1 | 455888-6 | SPACER, CRIMPER | 82 |
| | - | 1 | 1 | 1 | 1 | 1803607-1 | DOCUMENTATION PACKAGE | 71 |
| | - | 1 | 1 | 1 | 1 | 2119791-5 | DEPRESSOR, WIRE | 70 |
| | - | 1 | 1 | 1 | 1 | 2119740-1 | TAG,IDENTIFICATION | 67 |
| | - | 2 | 2 | 2 | 2 | 2168078-1 | SCREW, DRIVE, RH, RoHS, 2 x .188 | 66 |
| | - | 1 | 1 | 1 | 1 | 2168083-2 | SCR, SKT HD CAP, RoHS, M4 X 8.0 | 60 |
| | - | 1 | 1 | 1 | 1 | 5-18022-5 | SCR, HEX HD CAP, M4 X 6.0 | 59 |
| | - | 1 | 1 | 1 | 1 | 1338683-8 | FEED PAWL | 56 |
| | - | 4 | 4 | 4 | 4 | 2168083-3 | SCR, SKT HD CAP, RoHS, M4 X 12.0 | 54 |
| | - | 2 | 2 | 2 | 2 | 1-2168083-0 | SCR, SKT HD CAP, RoHS, M4 X 10 | 53 |
| | - | 1 | 1 | 1 | 1 | 5018030-1 | NUT, HEX, REG, RoHS, M3 | 52 |
| | - | 1 | 1 | 1 | 1 | 811242-5 | BUMPER, HOLD DOWN | 51 |
| | - | 1 | 1 | 1 | 1 | 690753-2 | SPACER, TONKER | 50 |
| | - | 1 | 2 | 1 | 2 | 18023-9 | SCR, SKT HD CAP M4 X 6.0 | 49 |
| | - | - | 1 | - | 1 | 2119652-1 | FEED CAM, PRE FEED | 48 |
| | - | - | 1 | - | 1 | 2119653-1 | FEED CAM, POST FEED | 47 |
| | - | 1 | 1 | 1 | 1 | 1803583-9 | APPLICATOR BASIC ASSEMBLY, SF | 46 |
| | - | 1 | 1 | 1 | 1 | 1803515-1 | RAM ASSEMBLY, SF ATLANTIC | 44 |
| | - | 1 | 1 | 1 | 1 | 1803602-1 | SCR, BHSC, RoHS (M8 X 25) | 41 |
| | - | 1 | 1 | 1 | 1 | 1752356-3 | SUPPORT, TERMINAL | 34 |
| | - | 2 | 2 | 2 | 2 | 2079383-5 | SCR, BHSC, RoHS (M4 X 20) | 33 |
| | - | 2 | 2 | 2 | 2 | 3-2844962-2 | SPACER, CYLINDRICAL, STRIP GUIDE | 30 |
| | - | 1 | 1 | 1 | 1 | 2844992-1 | ASSEMBLY, STRIP GUIDE | 29 |
| | - | 1 | 1 | 1 | 1 | 455888-3 | SPACER, CRIMPER | 28 |
| | - | 1 | 1 | 1 | 1 | 1320928-2 | STRIP GUIDE | 24 |
| | - | 1 | 1 | 1 | 1 | 2168083-2 | SCR, SKT HD CAP, RoHS, M4 X 8.0 | 21 |
| | - | 1 | 1 | 1 | 1 | 1-18028-2 | WASHER, FLAT, REG M4 | 20 |
| | - | 1 | 1 | 1 | 1 | 2119533-1 | STRIPPER, SIDE FEED | 19 |
| 1 | - | 1 | 1 | 1 | 1 | 2119806-1 | INSERT, SHEAR | 13 |
| | - | 1 | 1 | 1 | 1 | 4-22280-9 | SPRING, COMPRESSION | 12 |
| | - | 1 | 1 | 1 | 1 | 1-356885-4 | STOP, SHEAR | 11 |
| 1 | - | 1 | 1 | 1 | 1 | 2119805-1 | SHEAR HOLDER, FRONT | 10 |
| 1 | - | 1 | 1 | 1 | 1 | 318707-1 | FLOATING SHEAR, FRONT | 9 |
| 1 | 1 | 2 | 2 | 1 | 1 | 5-1633932-7 | ANVIL, COMBINATION | 8 |
| | - | - | - | - | - | - | - | 7 |
| | - | - | - | - | - | - | - | 6 |
| | - | 1 | 1 | 1 | 1 | 2119757-9 | DEPRESSOR, SHEAR | 5 |
| | - | 1 | 1 | 1 | 1 | 238011-4 | BLOCK, CRIMPER SPACER | 4 |
| 1 | 1 | 2 | 2 | 1 | 1 | 1-1633961-4 | CRIMPER, INSULATION F PREMIUM | 3 |
| | - | 1 | 1 | 1 | 1 | 455888-1 | SPACER, CRIMPER | 2 |
| 1 | 1 | 2 | 2 | 1 | 1 | 1-1633305-8 | CRIMPER, WIRE PREMIUM | 1 |
| | -77 | -72 | -71 | -2 | -1 | PART NO | DESCRIPTION | ITEM NO |

| | | | | | | | |
|--|--|--|--|--|-----------|--|--|
| THIS DRAWING IS UNPUBLISHED. IT IS SUBJECT TO CHANGE AND TO BE CONTROLLED BY THE ENGINEERING ORGANIZATION. IT SHOULD BE CONTACTED FOR THE LATEST REVISION. | | | | DWN X.ZHAO | 25APR2014 | TE Connectivity Harrisburg, PA 17105-3608 | |
| DIMENSIONS: mm | | | | CHK L.ZHANG | 25APR2014 | NAME Ocean Side Feed Applicator | |
| TOLERANCES UNLESS OTHERWISE SPECIFIED: 0 PLC ± 1 PLC ± 2 PLC ± 3 PLC ± 4 PLC ± ANGLES ± | | | | APVD T.F.BIN | 25APR2014 | SIZE CAGE CODE DRAWING NO RESTRICTED TO | |
| MATERIAL - | | | | APPLICATION SPEC - | | WEIGHT - | |
| FINISH - | | | | Customer Accessible Production Drawing | | SCALE 1:2 | |
| | | | | SHEET 1 | | OF 4 | |
| | | | | REV B | | | |

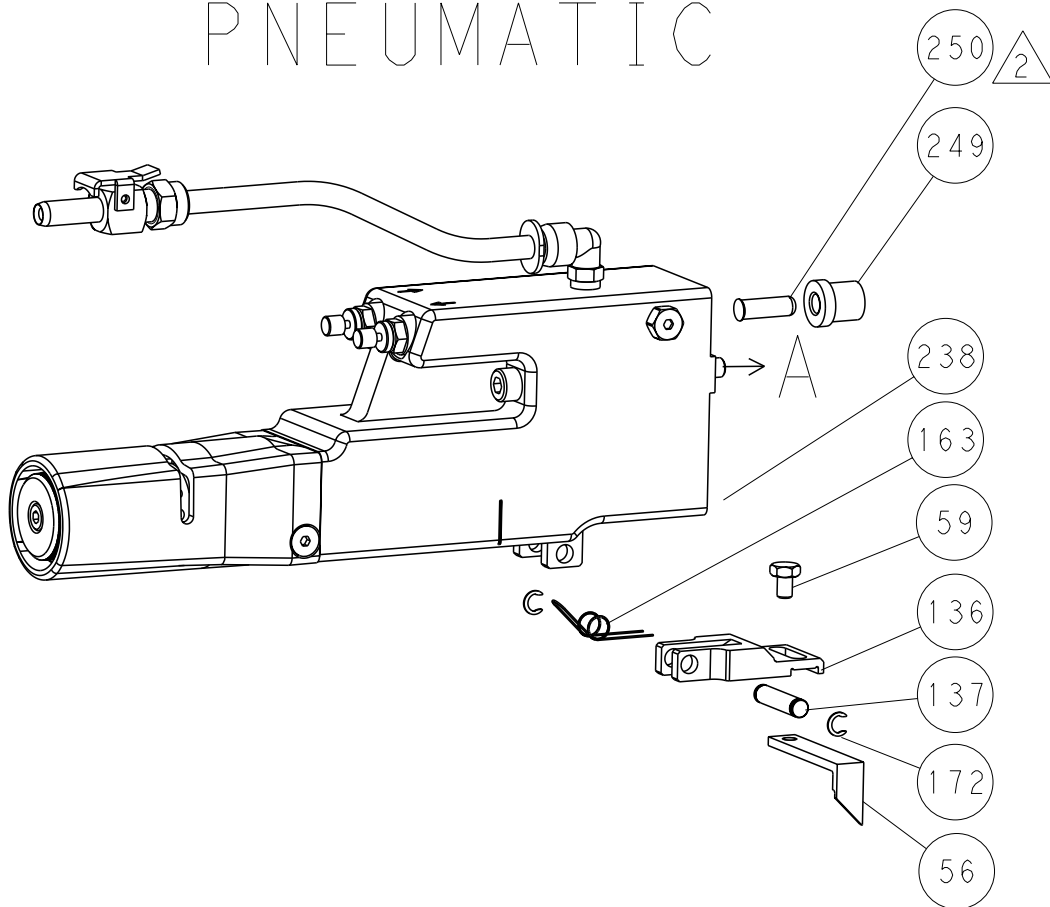
SHEETS 3 & 4 ARE NOT REQUIRED FOR ATLANTIC VERSION

| LOC | | DIST | | REVISIONS | | | | | |
|-----|--|------|--|-----------|-----|-------------|------|-----|------|
| A | | 66 | | P | LYR | DESCRIPTION | DATE | DWN | APVD |
| | | | | | - | SEE SHEET 1 | - | - | - |
| | | | | | | | | | |
| | | | | | | | | | |

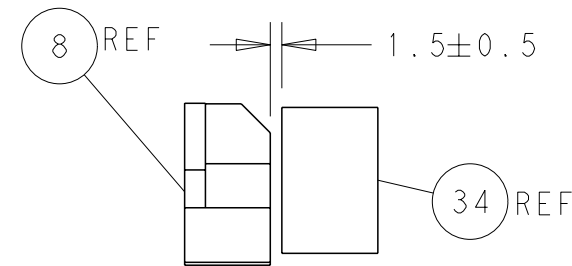
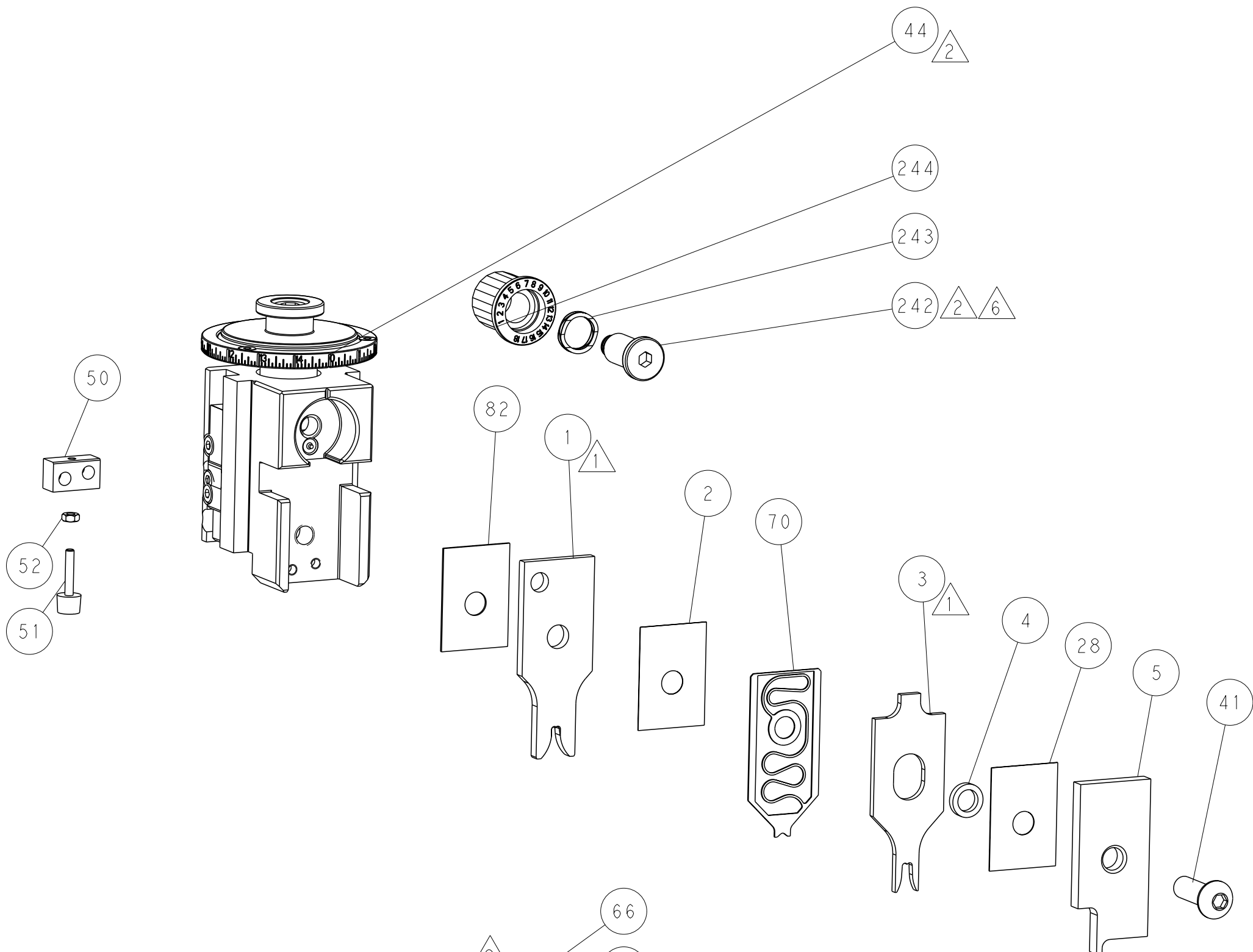
FEED TYPE
MECHANICAL



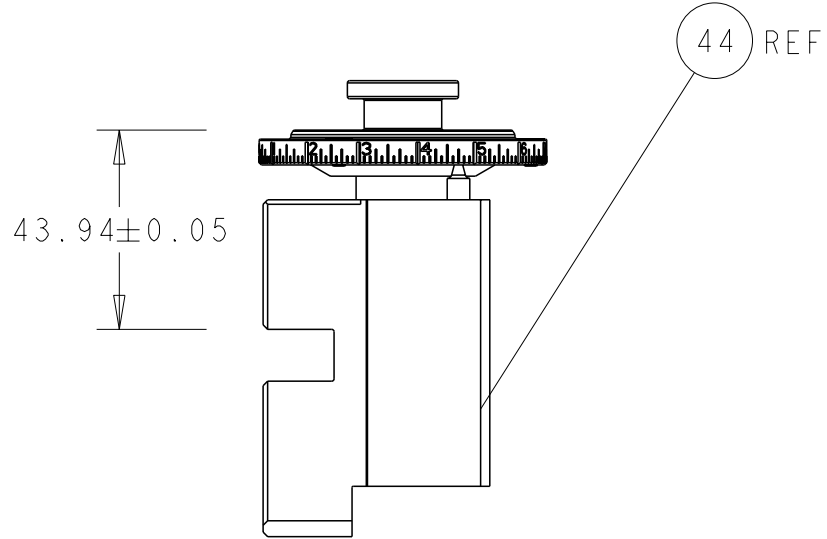
PNEUMATIC



53

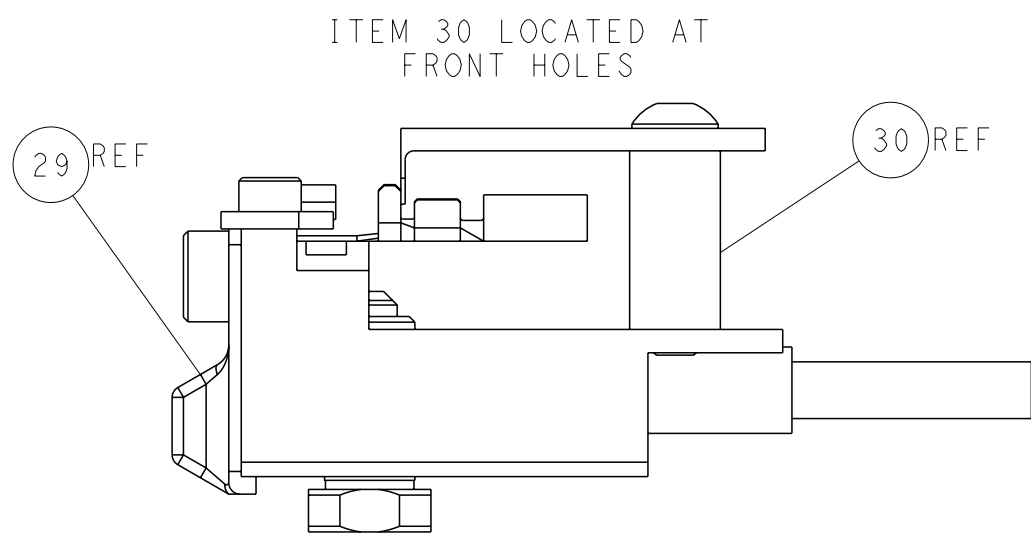
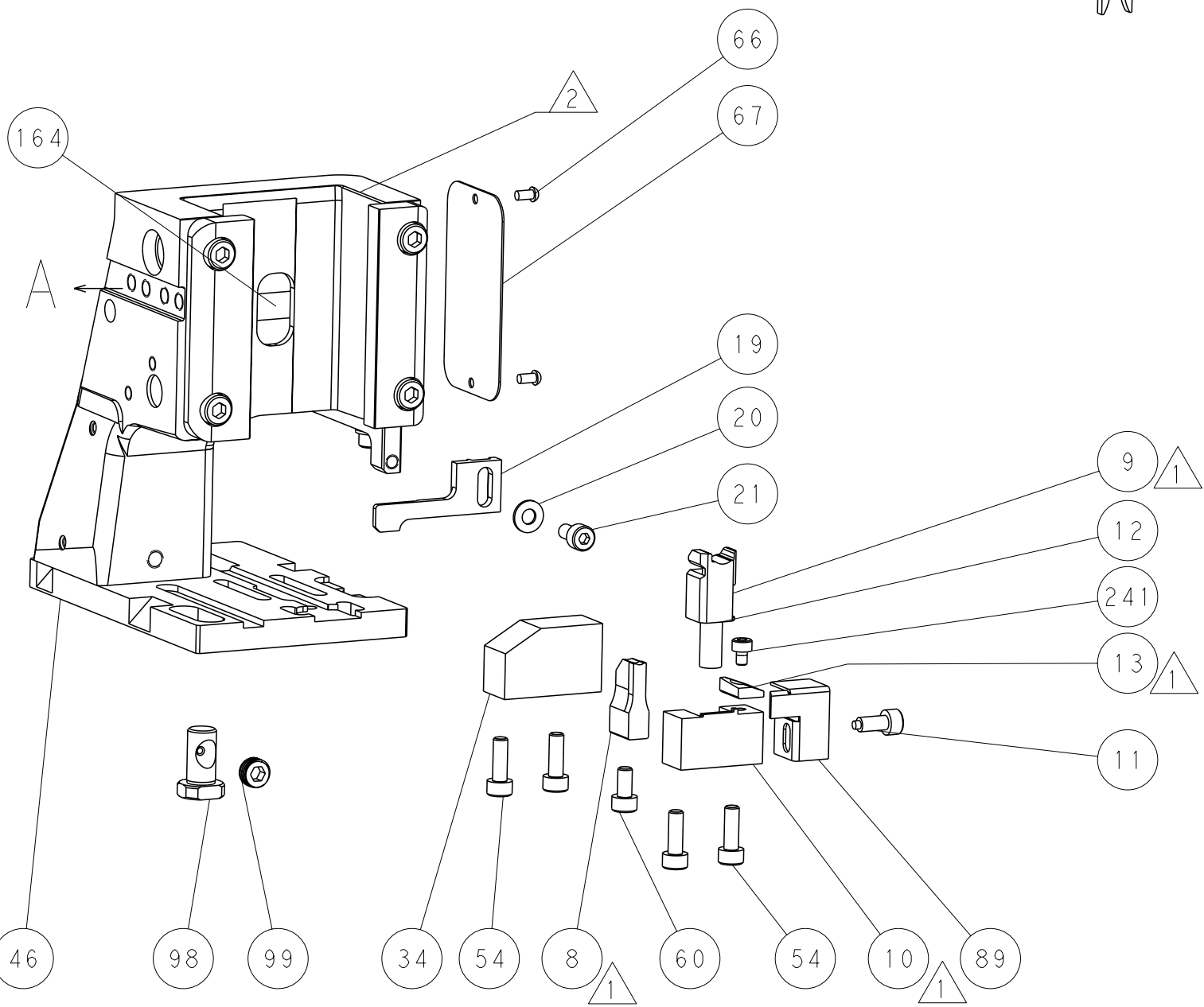
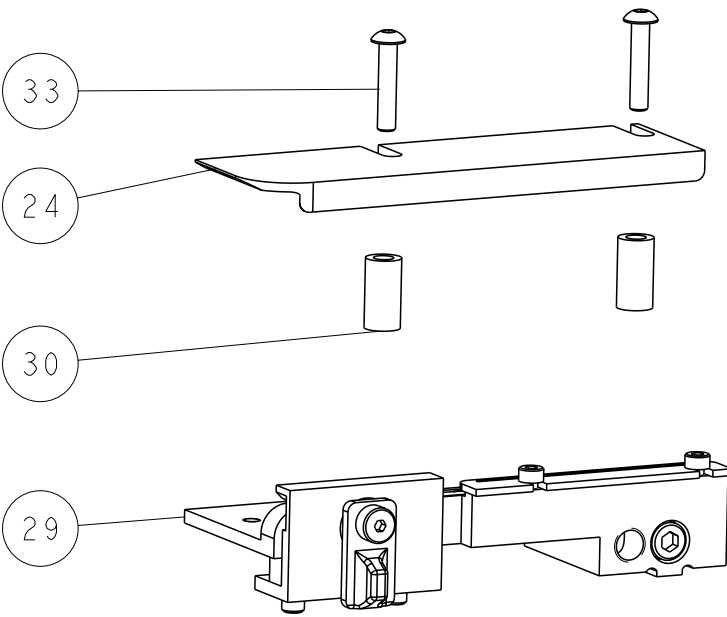
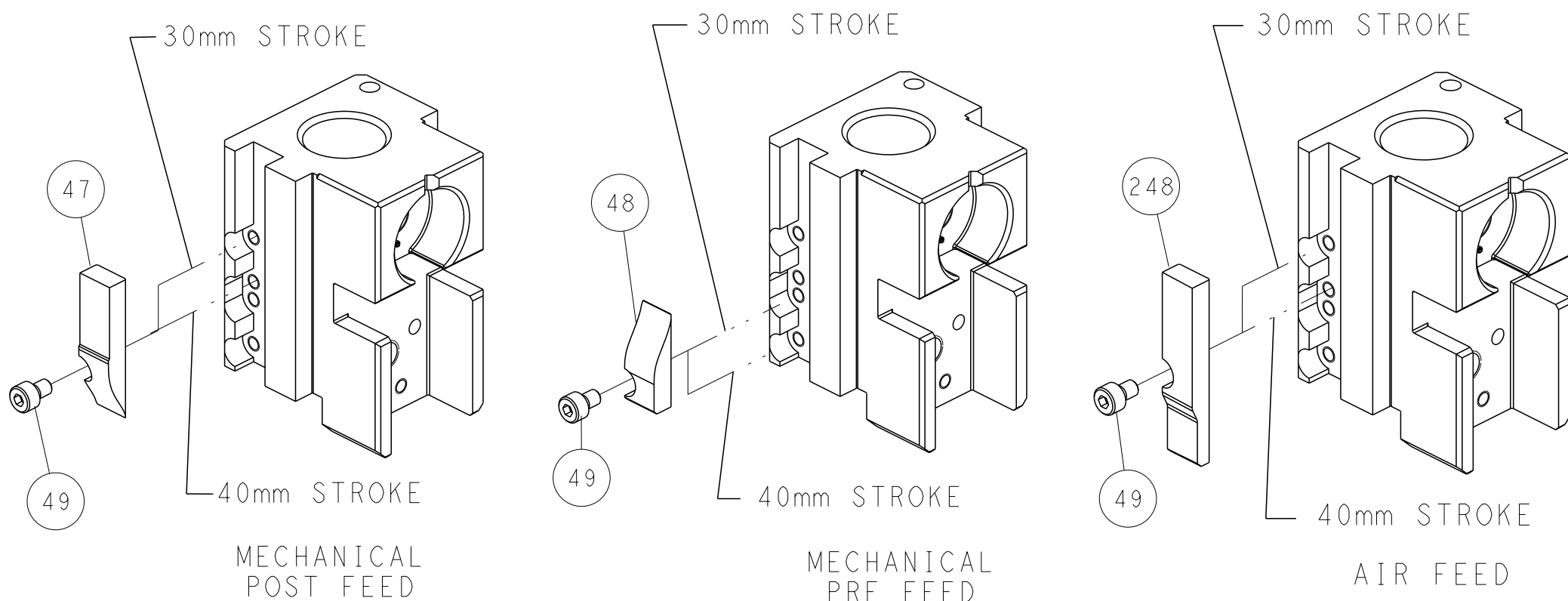


TERMINAL SUPPORT LOCATION



RAM SET-UP

CAM POSITIONS



FEED TRACK POSITION
GUIDE BY INSULATION BARREL

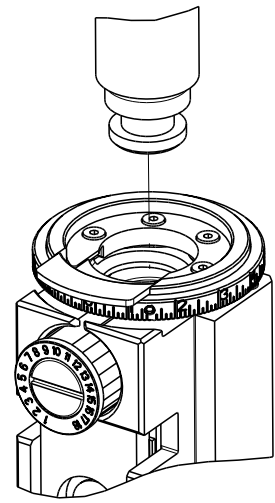
ATLANTIC VERSION
Shown on sheets 1 of 4 & 2 of 4
(Pacific version shown on sheets 3 of 4 & 4 of 4)

| | | | | | | | | | |
|-------------|--|--|--|--|--|-----------|--|---------------------------|--|
| DIMENSIONS: | | TOLERANCES UNLESS OTHERWISE SPECIFIED: | | DWN | | 25APR2014 | | TE Connectivity | |
| mm | | 0 PLC ± | | CNY | | 25APR2014 | | Harrisburg, PA 17105-3608 | |
| | | 1 PLC ± | | L. ZHANG | | 25APR2014 | | NAME | |
| | | 2 PLC ± | | T. ELBIN | | 25APR2014 | | Ocean Side Feed | |
| | | 3 PLC ± | | PRODUCT SPEC | | | | Applicator | |
| | | 4 PLC ± | | APPLICATION SPEC | | | | | |
| | | ANGLES ± | | WEIGHT | | | | | |
| MATERIAL | | FINISH | | SIZE | | CAGE CODE | | DRAWING NO | |
| | | | | A1 | | 00779 | | C=2266284 | |
| | | | | Customer Accessible Production Drawing | | SCALE | | 1:2 | |
| | | | | | | SHEET | | 2 of 4 | |
| | | | | | | REV | | B | |

SHEETS 3 & 4 ARE NOT REQUIRED FOR ATLANTIC VERSION

| | | | |
|--|----------|--------------------------|------------|
| 8 | | 7 | |
| THIS DRAWING IS UNPUBLISHED. | | RELEASED FOR PUBLICATION | |
| 20 | | 20 | |
| © COPYRIGHT 20 BY TYCO ELECTRONICS CORPORATION. ALL RIGHTS RESERVED. | | | |
| PART NUMBER | REVISION | DESCRIPTION | FEED TYPE |
| 2-2266284-1 | B | FINE CRIMP HEIGHT ADJUST | MECHANICAL |
| 2-2266284-2 | B | FINE CRIMP HEIGHT ADJUST | PNEUMATIC |
| 7-2266284-7 | A | CRIMP TOOLING KIT | - |

PACIFIC VERSION TERMINATOR
INTERFACE ADAPTER



| APPLICATOR DATA | | |
|--------------------------------------|----------------|------|
| CRIMP | SIZE | TYPE |
| WIRE | 3.05 mm [.120] | F |
| INSUL | 4.06 mm [.160] | F |
| APPLICATOR INSTRUCTIONS 408-35042 | | |

| | | | |
|---|-----------------|---|-----------------|
| TERMINAL DATA: ARKLES TERMINAL TE CRIMP SPECIFICATION | | | |
| TERMINAL NAME: TERMINAL,PIN | | | |
| WIRE STRIP LENGTH 4.65-5.03 mm [.183-.198 IN] | | INSULATION DIAMETER RANGE Ø2.29-3.05 mm [.090-.120 IN] | |
| TERMINAL APPLICATION SPECIFICATION | NONE | - | - |
| TERMINALS APPLIED | | | |
| TE TERMINAL | ARKLES TERMINAL | TE TERMINAL | ARKLES TERMINAL |
| 1572740-1 | 3800M 92A | | |

| | | | |
|-----------|--|----------------------------|--------------------------------|
| WIRE SIZE | | CRIMP HEIGHT mm [INCH] | CRIMP HEIGHT REFERENCE SETTING |
| 14 AWG | | 2.03+/-0.05 [.080+/- .002] | 5.9 |
| 16 AWG | | 1.83+/-0.05 [.072+/- .002] | 7.9 |
| 18 AWG | | 1.70+/-0.05 [.067+/- .002] | 9.4 |



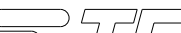

1. RECOMMENDED SPARE PARTS
2. REFER TO SUPPLIED INSTRUCTION SHEET FOR CLEANING, LUBRICATION AND STORAGE OF APPLICATOR.
3. APPLY PART NUMBER 2-23419-6 LOCTITE TO THREADS OF ITEM 242.
4. CRIMP HEIGHT REFERENCE SETTING WAS THE SETTING USED WHEN THE APPLICATOR WAS QUALIFIED AT THE FACTORY. ADJUSTMENT MAY BE NECESSARY WHEN RUNNING APPLICATOR IN THE FIELD.
5. TERMINAL LUBRICANT IS RECOMMENDED.
6. UNLESS SPECIFIED OTHERWISE TORQUE VALUES SHALL BE USED PER DOCUMENT, 101-35000.

*WARNING
ON INSTALLATION, SET WIRE DISC TO CRIMP HEIGHT REFERENCE SETTING FOR LARGEST WIRE SIZE. CRIMP HEIGHT REFERENCE SETTINGS GREATER THAN THE VALUE SHOWN MAY CAUSE DAMAGE TO THE CRIMP TOOLING, REFER TO THE INSTRUCTION SHEET FOR PROPER SETUP AND ADJUSTMENTS.

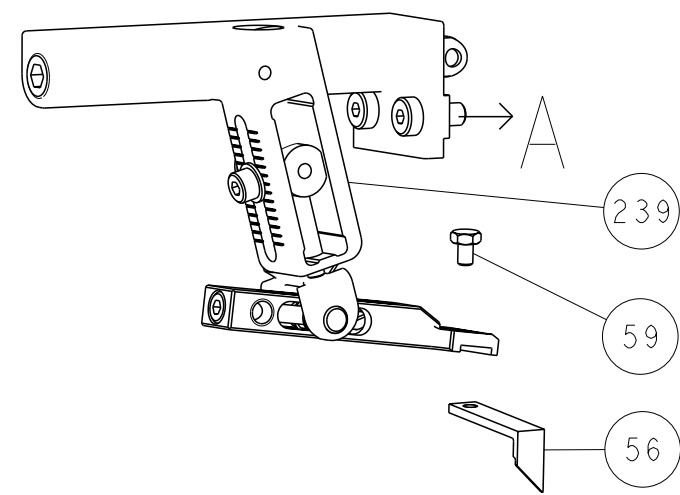
PACIFIC VERSION
Shown on sheets 3 of 4 & 4 of 4
(Atlantic version shown on sheets 1 of 4 & 2 of 4)

| LOC | DIST | REVISIONS | | | | |
|-----|------|-----------|-----|-------------|------|-----|
| | | # | LYR | DESCRIPTION | DATE | OWN |
| A | 66 | - | - | SEE SHEET 1 | - | - |
| | | | | | | |
| | | | | | | |

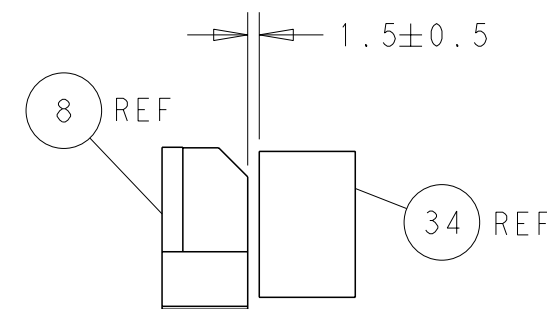
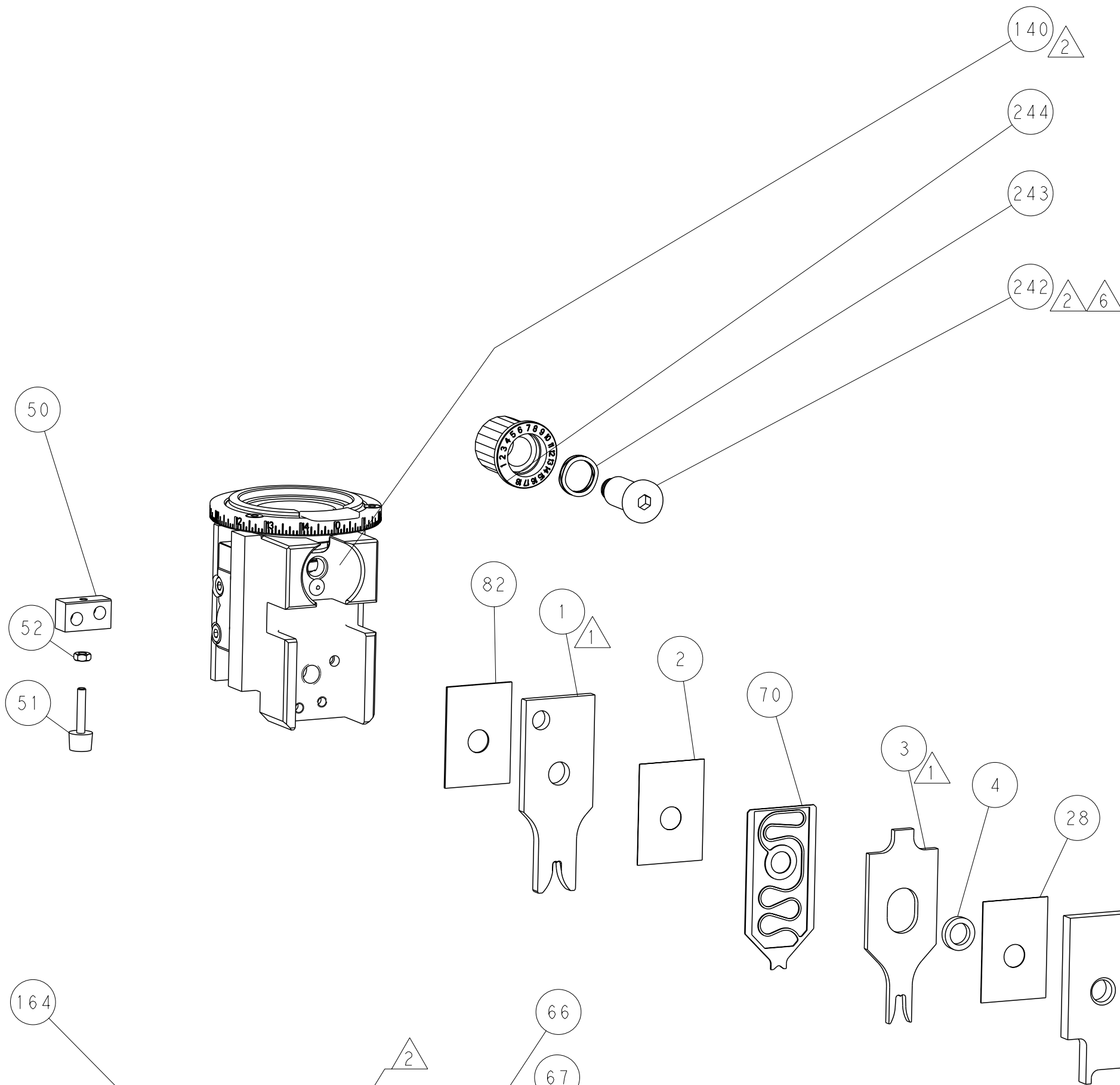
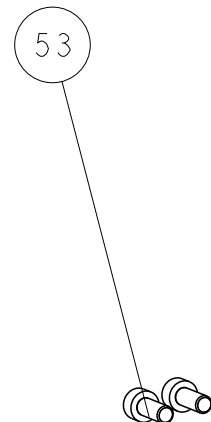
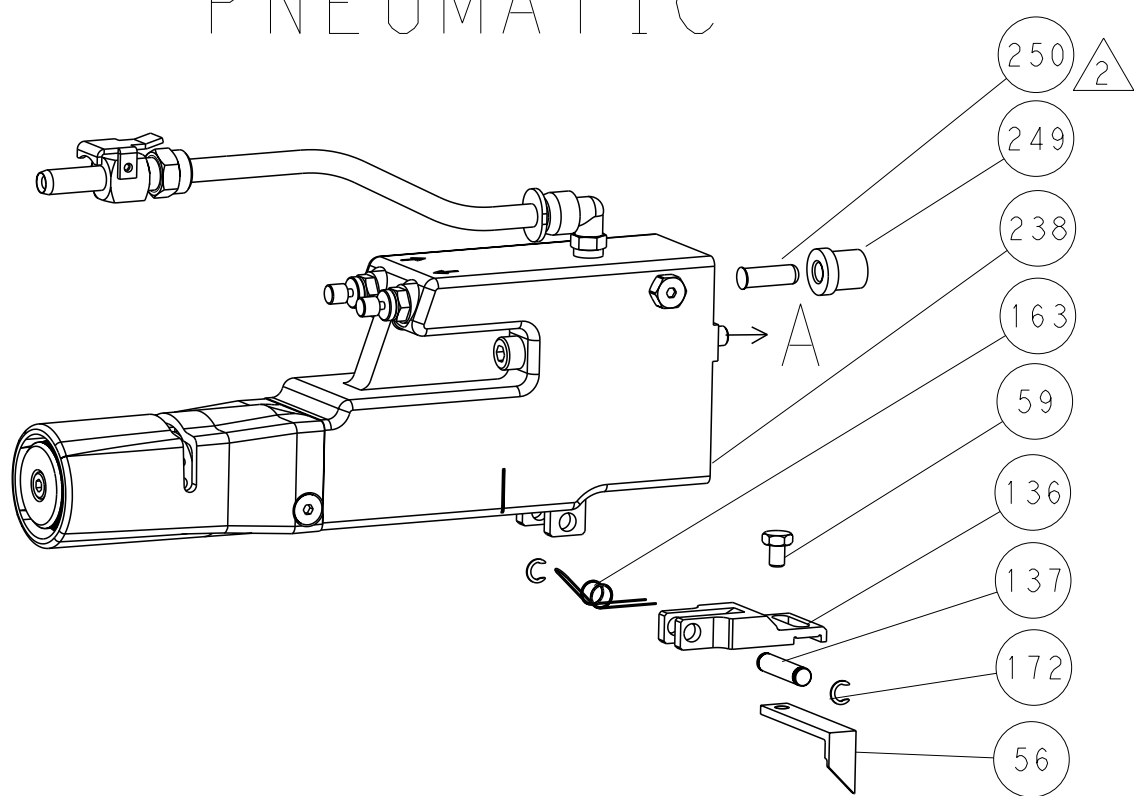
| | | | | | |
|---|-----|-----|-------------|-------------------------------------|-----|
| - | 1 | - | 2119640-1 | PUSH ROD, AIR FEED | 250 |
| - | 1 | - | 1803259-1 | BUSHING, FLANGED | 249 |
| - | 1 | 1 | 2119082-3 | CAM, SNAIL, INSULATION ADJUSTMENT | 244 |
| - | 1 | 1 | 2079764-1 | WASHER, WAVE SPRING, CREST-TO-CREST | 243 |
| - | 1 | 1 | 2119083-1 | RETAINER, INSULATION DIAL | 242 |
| - | 1 | 1 | 7-18023-7 | SCR, SKT HD CAP M3 X 4.0 | 241 |
| - | - | 1 | 2119580-1 | MECHANICAL FEED ASSEMBLY | 239 |
| - | 1 | - | 2063440-1 | AIR FEED MODULE | 238 |
| - | 2 | - | 21045-3 | RING, RETAIN, EXTERN, 3/16 CRESCENT | 172 |
| - | REF | REF | 994970-2 | COUNTER, MAGNETIC | 164 |
| - | 1 | - | 240638-1 | SPRING, FEED FINGER | 163 |
| - | 1 | - | 2119641-2 | FEED CAM, AIR FEED | 151 |
| - | 1 | 1 | 2168083-8 | SCR, SKT HD CAP, RoHS, M4 X 16 | 144 |
| - | 4 | 4 | 2168083-9 | SCR, SKT HD CAP, RoHS, M4 X 20 | 143 |
| - | - | 1 | 2119653-2 | FEED CAM, POST FEED | 142 |
| - | 1 | 1 | 1-1803583-0 | APPLICATOR BASIC ASSEMBLY, SF | 141 |
| - | 1 | 1 | 1803516-1 | RAM ASSEMBLY, SF PACIFIC | 140 |
| - | 1 | - | 3-23627-7 | PIN, RETAIN, GRVD, 3/16 X .854 | 137 |
| - | 1 | - | 2119799-1 | HOLDER,FEED FINGER, AF | 136 |
| - | 1 | 1 | 2119955-1 | ASSY, LUBRICATOR, SIDE FEED | 113 |
| - | 1 | 1 | 2844908-1 | SCREW, LOCKING | 99 |
| - | 1 | 1 | 2844907-1 | POST, LOCKING | 98 |
| - | 1 | 1 | 318563-1 | GUARD, FRONT CHIP | 89 |
| - | 1 | 1 | 455888-6 | SPACER, CRIMPER | 82 |
| - | 1 | 1 | 1803607-1 | DOCUMENTATION PACKAGE | 71 |
| - | 1 | 1 | 2119791-5 | DEPRESSOR, WIRE | 70 |
| - | 1 | 1 | 2119740-1 | TAG,IDENTIFICATION | 67 |
| - | 2 | 2 | 2168078-1 | SCREW, DRIVE, RH, RoHS, 2 x .188 | 66 |
| - | 1 | 1 | 5-18022-5 | SCR, HEX HD CAP, M4 X 6.0 | 59 |
| - | 1 | 1 | 1338683-8 | FEED PAWL | 56 |
| - | 2 | 2 | 1-2168083-0 | SCR, SKT HD CAP, RoHS, M4 X 10 | 53 |
| - | 1 | 1 | 5018030-1 | NUT, HEX, REG, RoHS, M3 | 52 |
| - | 1 | 1 | 811242-5 | BUMPER, HOLD DOWN | 51 |
| - | 1 | 1 | 690753-2 | SPACER, TONKER | 50 |
| - | 1 | 2 | 18023-9 | SCR, SKT HD CAP M4 X 6.0 | 49 |
| - | - | 1 | 2119652-1 | FEED CAM, PRE FEED | 48 |
| - | 1 | 1 | 1803602-1 | SCR, BHSC, RoHS (M8 X 25) | 41 |
| - | 1 | 1 | 1752356-3 | SUPPORT, TERMINAL | 34 |
| - | 2 | 2 | 2079383-5 | SCR, BHSC, RoHS (M4 X 20) | 33 |
| - | 2 | 2 | 3-2844962-2 | SPACER, CYLINDRICAL, STRIP GUIDE | 30 |
| - | 1 | 1 | 2844992-1 | ASSEMBLY, STRIP GUIDE | 29 |
| - | 1 | 1 | 455888-3 | SPACER, CRIMPER | 28 |
| - | 1 | 1 | 1320928-2 | STRIP GUIDE | 24 |
| - | 1 | 1 | 2168083-2 | SCR, SKT HD CAP, RoHS, M4 X 8.0 | 21 |
| - | 1 | 1 | 1-18028-2 | WASHER, FLAT, REG M4 | 20 |
| - | 1 | 1 | 2119533-1 | STRIPPER, SIDE FEED | 19 |
| - | 1 | 1 | 2119806-1 | INSERT, SHEAR | 13 |
| - | 1 | 1 | 4-22280-9 | SPRING, COMPRESSION | 12 |
| - | 1 | 1 | 1-356885-4 | STOP, SHEAR | 11 |
| - | 1 | 1 | 2119805-1 | SHEAR HOLDER, FRONT | 10 |
| - | 1 | 1 | 318707-1 | FLOATING SHEAR, FRONT | 9 |
| - | 1 | 1 | 1-1633932-7 | ANVIL, COMBINATION | 8 |
| - | - | - | - | - | 7 |
| - | - | - | - | - | 6 |
| - | 1 | 1 | 2119757-9 | DEPRESSOR, SHEAR | 5 |
| - | 1 | 1 | 238011-4 | BLOCK, CRIMPER SPACER | 4 |
| - | 1 | 1 | 1-1633961-4 | CRIMPER, INSULATION F PREMIUM | 3 |
| - | 1 | 1 | 455888-1 | SPACER, CRIMPER | 2 |
| - | 1 | 1 | 1-1633305-8 | CRIMPER, WIRE PREMIUM | 1 |

| | | | | | | | | | | | |
|---|--|---|--|-------------------------------|--|--|--|--|--|-------|--|
| THIS DRAWING IS A CONTROLLED DOCUMENT FOR THE ELECTRONIC INDUSTRY. IT IS SUBJECT TO CHANGE AND TO CONTROL THE ENGINEERING ORGANIZATION SHOULD BE CONTACTED FOR THE LATEST REVISION. | | | | DWN X.ZHAO 25APR2014 | |  TE Connectivity Harrisburg, PA 17105-3608 | | | | | |
| | | | | CHK L.ZHANG 25APR2014 | | | | | | | |
| DIMENSIONS: mm | | TOLERANCES UNLESS OTHERWISE SPECIFIED: | | APVD T.FELBIN 25APR2014 | | NAME | | Ocean Side Feed Applicator | | | |
| | | | | PRODUCT SPEC - | | | | | | | |
|  | | 0 PLC ± 1 PLC ± 2 PLC ± 3 PLC ± 4 PLC ± ANGLES ± FINISH - | | APPLICATION SPEC - | | | | SIZE CAGE CODE DRAWING NO A 00779 C=2266284 | | | |
| MATERIAL | | | | WEIGHT - | | | | | | | |
| Customer Accessible Production Drawing | | | | | | SCALE 1:2 | | SHEET 3 of 4 | | REV B | |

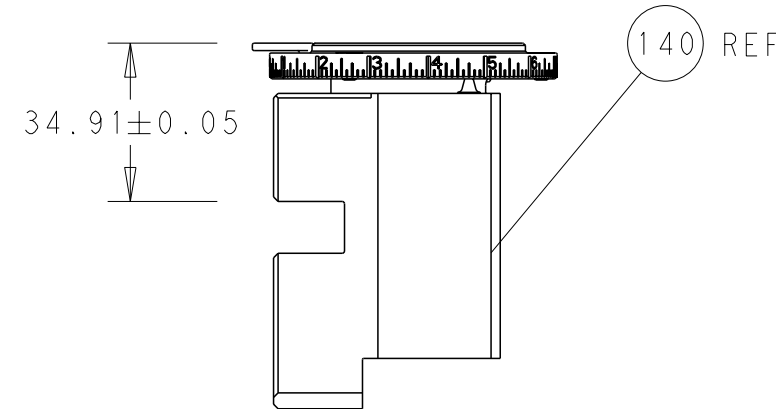
FEED TYPE
MECHANICAL



PNEUMATIC

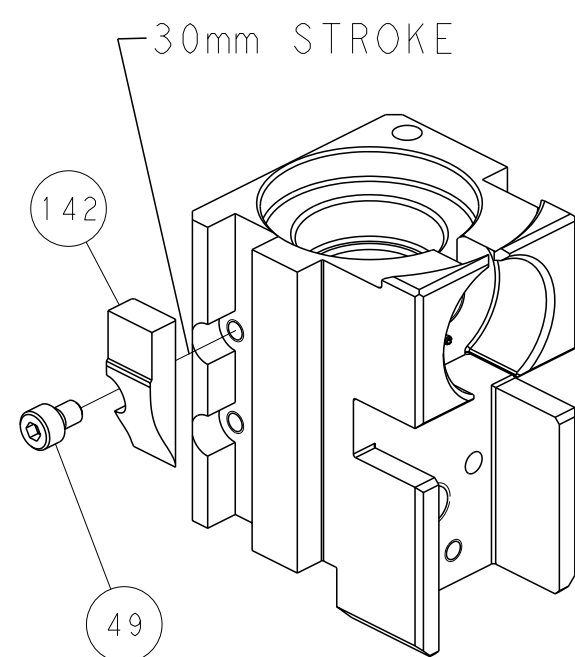


TERMINAL SUPPORT LOCATION

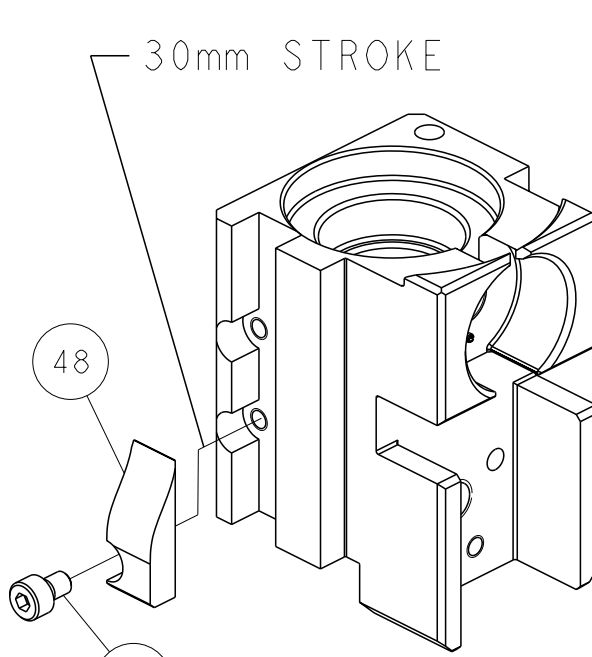


RAM SET-UP

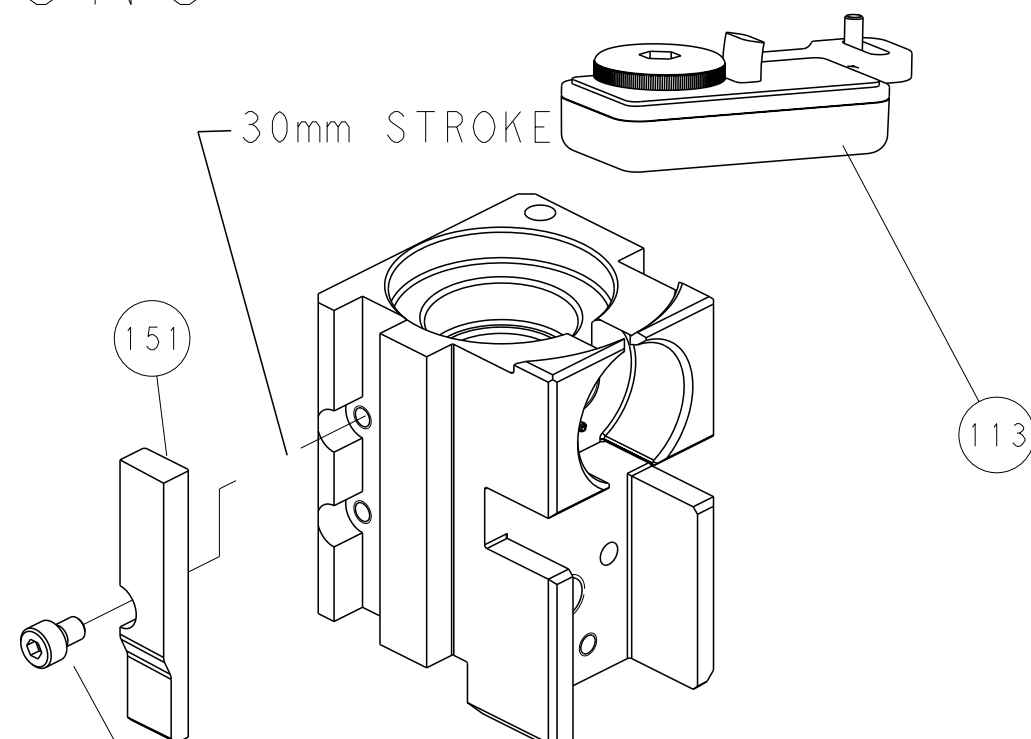
CAM POSITIONS



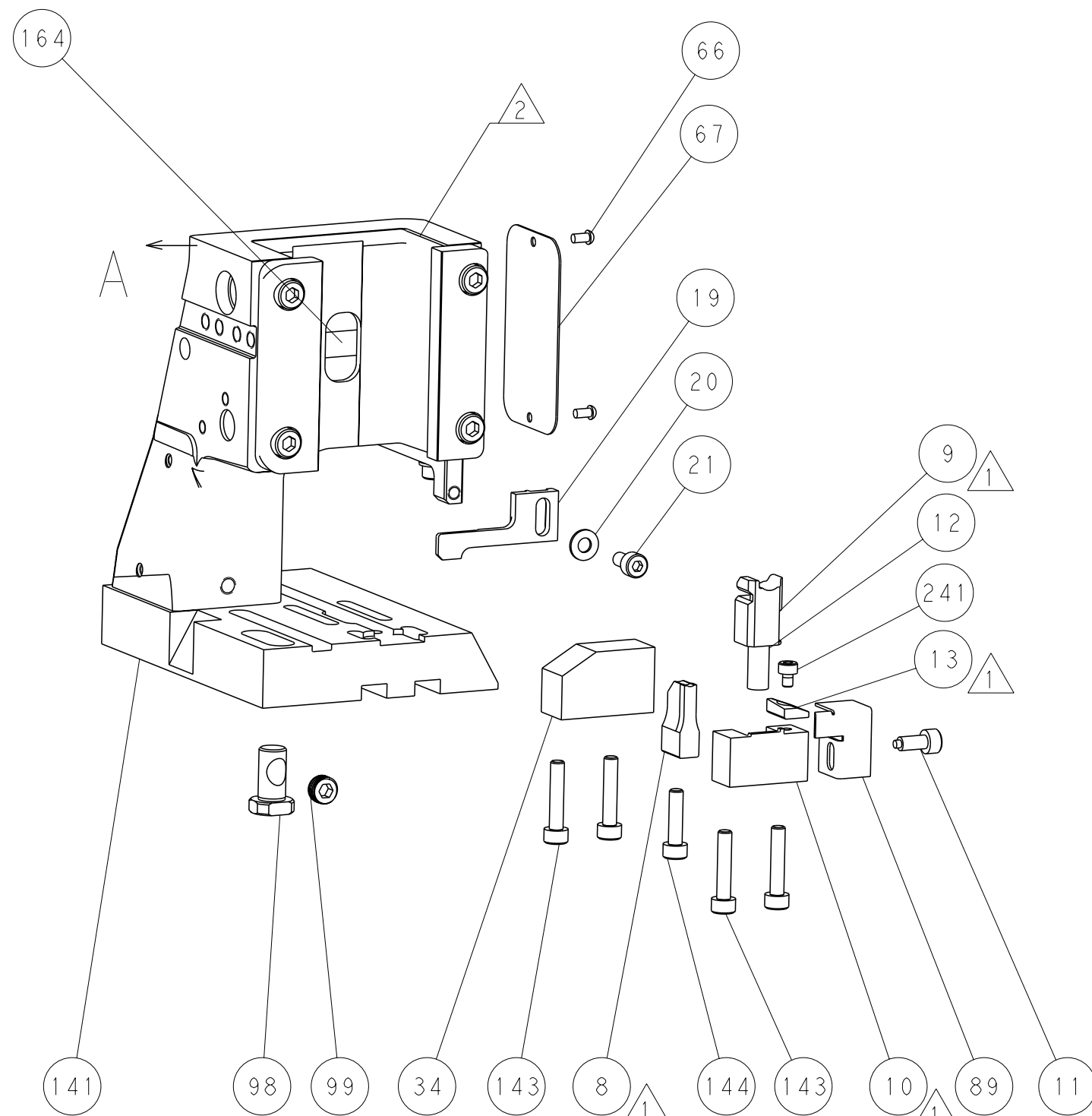
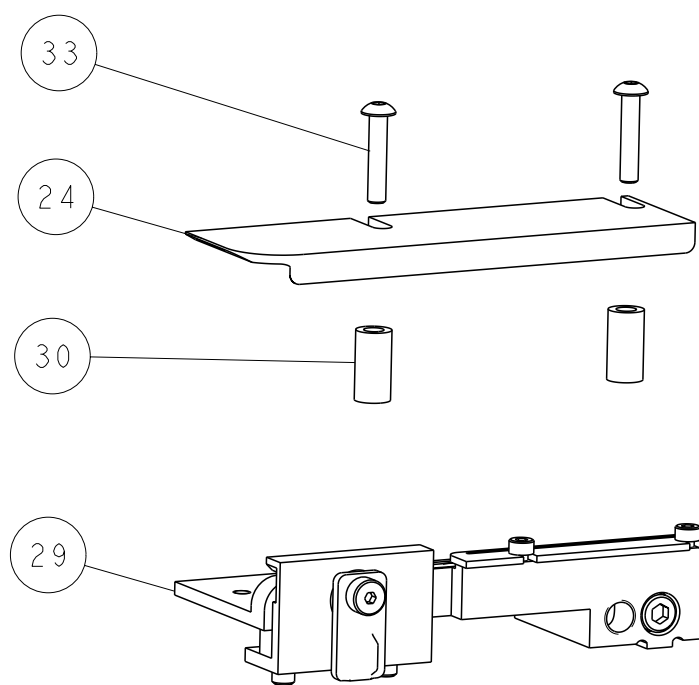
MECHANICAL
POST FEED



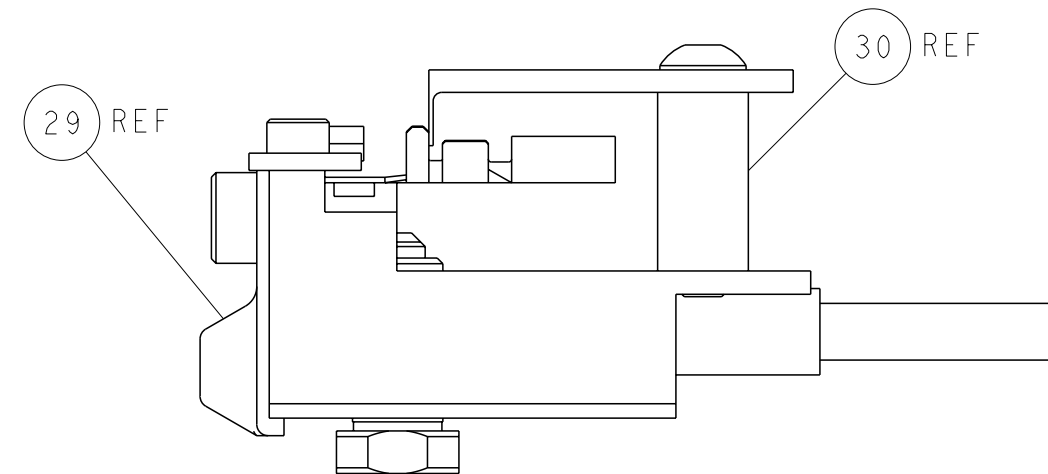
MECHANICAL
PRE FEED



AIR FEED

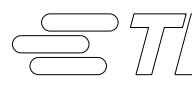


ITEM 30 LOCATED AT
FRONT HOLES



FEED TRACK POSITION
GUIDE BY INSULATION BARREL

PACIFIC VERSION
Shown on sheets 3 of 4 & 4 of 4
(Atlantic version shown on sheets 1 of 4 & 2 of 4)

| | | | | | | |
|---|--|--|----------|-----------|--|--|
| THIS DRAWING IS A CONTROLLED DOCUMENT FOR TYCO ELECTRONICS CORPORATION. IT IS SUBJECT TO CHANGE AND TO CONTROL AND ENGINEERING DISCRETION. SHOULD BE CONTACTED FOR THE LATEST REVISION. | | DWN | X. ZHAO | 25APR2014 |  TE Connectivity Harrisburg, PA 17105-3608 | |
| | | CHK | L. ZHANG | 25APR2014 | | |
| | | APVD | T. ELBIN | 25APR2014 | NAME | |
| | | PRODUCT SPEC | | | Ocean Side Feed Applicator | |
| | | APPLICATION SPEC | | | - | |
| | | WEIGHT | | | - | |
| | | MATERIAL | | | - | |
| | | Customer Accessible Production Drawing | | | - | |

Mouser Electronics

Authorized Distributor

Click to View Pricing, Inventory, Delivery & Lifecycle Information:

[TE Connectivity:](#)

[8-2266284-4](#) [8-2266284-6](#) [8-2266284-5](#)