

8

7

6

5

4

3

2

1

THIS DRAWING IS UNPUBLISHED.

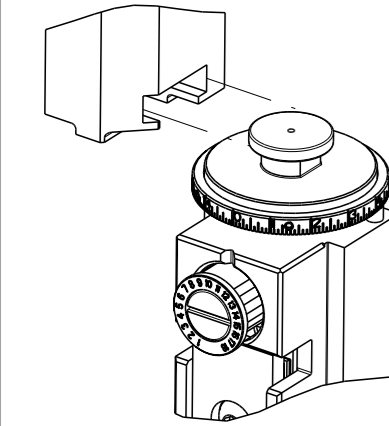
RELEASED FOR PUBLICATION

20

© COPYRIGHT 20

BY TYCO ELECTRONICS CORPORATION. ALL RIGHTS RESERVED.

ATLANTIC VERSION TERMINATOR INTERFACE ADAPTER



PART NUMBER

2266421-2

REVISION

A

DESCRIPTION

FINE CRIMP HEIGHT ADJUST

FEED TYPE

PNEUMATIC

CONVERT TO

SERVO LATCH PLATE
SMART APPLICATOR

PART NUMBERS REQUIRED

2119951-1
2161326-1

2266421-5

A

FINE CRIMP HEIGHT ADJUST

SERVO LATCH PLATE

4

PNEUMATIC FEED

2119950-1

1338685-1

5-18022-5

2119641-1

2119799-1

2063440-1

2266421-6

A

NON-CRIMP HEIGHT ADJUST

SERVO LATCH PLATE

4

12

2266421-7

A

FINE CRIMP HEIGHT ADJUST

NONE

7-2266421-7

A

CRIMP TOOLING KIT

-

APPLICATOR DATA

CRIMP	SIZE	TYPE
WIRE	2.29 mm [.090]	F
INSUL	3.20 mm [.126]	F

APPLICATOR INSTRUCTIONS
408-10389

TERMINAL DATA: G&H TERMINAL

LEAR CRIMP SPECIFICATION

TERMINAL NAME: SIKO 1-FSH 6.3X0.8-1

WIRE STRIP LENGTH

INSULATION DIAMETER RANGE

5.00-5.50 mm [.197-.217 IN]

Ø2.29-3.05 mm [.090-.120 IN]

TERMINAL APPLICATION SPECIFICATION

LEAR SPEC 26817 REVISION 3

TERMINALS APPLIED

TE TERMINAL

G&H TERMINAL

TE TERMINAL

G&H TERMINAL

1572520-1

26817.213.178

1572520-2

26817.123.178

WIRE SIZE

CRIMP HEIGHT mm [INCH]

CRIMP HEIGHT REFERENCE SETTING

1.00mm2

1.60+/-0.05 [.063+/- .002]

7.5

0.75mm2

1.55+/-0.05 [.061+/- .002]

7.9

0.50mm2

1.45+/-0.05 [.057+/- .002]

9.0

RECOMMENDED SPARE PARTS

GREASE BEARING SURFACES LIGHTLY

LUBRICATE DAILY PER THE APPLICATOR INSTRUCTION SHEET SUPPLIED WITH THE APPLICATOR.

APPLICATOR SPECIFIC DATA TO BE ENTERED INTO BLANK MEMORY CHIP AT ASSEMBLY. SEE BELOW FOR PART NUMBER:
PNEUMATIC FEED WITH "SMART APPLICATOR" CONVERSION: 8-2266421-4
SERVO FEED WITH "FINE CRIMP HEIGHT ADJUST": 8-2266421-5
SERVO FEED WITH "NON-CRIMP HEIGHT ADJUST": 8-2266421-6

ADJUSTMENT OF THE STRIPPER MAY BE REQUIRED WHEN MOVING THE APPLICATOR BETWEEN BENCH AND LEADMAKER APPLICATIONS.

APPLY PART NUMBER 1-23419-5 LOCTITE TO THREADS OF ITEMS 62.
APPLY PART NUMBER 2-23419-6 LOCTITE TO THREADS OF ITEM 242.
FOR -6 ONLY APPLY PART NUMBER 1-23419-5 LOCTITE TO THREADS OF ITEMS 37.

GREASE THREADS, GROOVE AND O-RING ON ITEMS 35 & 252.

MAGNET, ITEM 166 MUST BE ORIENTED CORRECTLY IN ORDER TO PROPERLY ACTUATE THE COUNTER.

CRIMP HEIGHT REFERENCE SETTING WAS THE SETTING USED WHEN THE APPLICATOR WAS QUALIFIED AT THE FACTORY. ADJUSTMENT MAY BE NECESSARY WHEN RUNNING APPLICATOR IN THE FIELD.

TERMINAL PITCH NOT COMPATIBLE WITH MECHANICAL FEED.

TO CONVERT THE APPLICATOR TO A NON-CARRIER CUTTING STYLE, REMOVE ITEM 13 AND ATTACH TO THE LOCATION ON THE BACK SIDE OF THE HOUSING. REFER TO INSTRUCTION SHEET FOR ADDITIONAL INFORMATION.

WHEN ASSEMBLING A NON CRIMP HEIGHT ADJUST APPLICATOR (-6) USE SHIMS FROM ITEM 260 TO ACHIEVE A NOMINAL SHIM HEIGHT OF 4.20.

APPLICATOR STYLE CONVERSION CHART

CONVERT TO	PART NUMBERS REQUIRED
-	-
SERVO LATCH PLATE	2119951-1
SMART APPLICATOR	2161326-1
-	-
PNEUMATIC FEED	2119950-1
-	-
-	-
-	-
-	-
-	-
-	-

ATLANTIC VERSION

Shown on sheets 1 of 4 & 2 of 4

(Pacific version shown on sheets 3 of 4 & 4 of 4)

SET UP GAUGE

2119599-1

LOC

A

DIST

66

REV

1

DATE

18JUL2014

CHK

G.BAILEY

APVD

U.GUO

18JUL2014

DIMENSIONS:

mm

TOLERANCES UNLESS OTHERWISE SPECIFIED:

0 PLC ±.5

1 PLC ±0.13

2 PLC ±0.13

3 PLC ±0.013

4 PLC ±0.0001

ANGLES FINISH

MATERIAL

Customer Accessible Production Drawing

SCALE

1:2

SHEET

1

OF

4

REV

A

TE Connectivity

Harrisburg, PA 17105-3608

Ocean Side Feed Applicator

SIZE

CAGE CODE

DRAWING NO

RESTRICTED TO

00779

©=2266421

-

REVISIONS

REV	DATE	DESCRIPTION	DATE	OWN	APVD
A	25SEP2014	RELEASED		LG	GB

8-21084-0

O-RING, .676 ID, .070 DIA. MAT.

252

-

-

-

-

1

2119640-1

PUSH ROD, AIR FEED

250

-

-

-

-

1

2079988-1

BUSHING, LCH5-12, MISUMI

249

-

-

-

-

1

2119641-1

FEED CAM, AIR FEED

248

-

1

-

1

1

2119798-1

DETENT PIN

247

-

1

-

1

1

1-22279-3

SPRING, COMPRESSION

246

-

-

1

-

-

2119758-1

RAM, AMP STYLE, SIDE FEED, NON-ADJ.

245

-

1

1

1

1

2119082-4

CAM, SNAIL, INSULATION ADJUSTMENT

244

-

1

1

1

1

2079764-1

WASHER, WAVE SPRING, CREST-TO-CREST

243

-

1

1

1

1

2119083-1

RETAINER, INSULATION DIAL

242

-

1

1

1

1

7-18023-7

SCR, SKT HD CAP M3 X 4.0

241

-

-

2

2

-

2168400-6

SHCS, LOW HEAD, RoHS, M5 X 16

240

-

-

-

-

-

2119580-1

MECHANICAL FEED ASSEMBLY

239

-

-

-

-

1

2063440-1

AIR FEED MODULE

238

-

-

1

1

-

2119740-2

TAG, IDENTIFICATION

213

-

-

1

1

-

1901094-3

SPACER, FEEDER

198

-

-

-

2

21045-3

RING, RETAIN, EXTERN, 3/16 CRESCENT

172

-

1

1

1

1

994969-1

MAGNET, RARE EARTH HIGH ENERGY

166

-

REF

REF

REF

REF

994970-2

COUNTER, MAGNETIC

164

-

-

-

-

1

240638-1

SPRING, FEED FINGER

163

-

-

-

-

1

3-23627-7

PIN, RETAIN, GRVD, 3/16 X .854

137

-

-

-

-

1

2119799-1

HOLDER, FEED FINGER, AF

136

-

-

REF

REF

-

SEE NOTE 4

MEMORY CHIP, PROGRAMMED

135

-

-

1

1

-

1633743-1

SERVO FEED LATCH ASM

133

-

-

REF

REF

-

2119944-1

FEED FINGER ASSEMBLY, SF

117

-

1

1

1

1

455888-5

SPACER, CRIMPER

82

-

1

1

1

1

2119956-1

DOCUMENTATION PACKAGE

71

-

1

-

-

1

2119740-1

TAG, IDENTIFICATION

67

-

2

2

2

2

2168078-1

SCREW, DRIVE, RH, RoHS, 2 x .188

66

-

1

-

1

1

2119793-1

LIMITER, ADJUSTMENT BOLT

63

-

3

-

3

3

992763-5

SCR, SET, SOC, CONE POINT, M3 x 4.0

62

-

1

1

1

1

2079383-4

SCR, BHSC, RoHS (M4 X 8)

60

-

-

-

-

1

5-18022-5

SCR, HEX HD CAP, M4 X 6.0

59

-

-

-

-

1

1338685-1

PAWL, FEED

56

-

4

4

4

4

2168400-1

SHCS, LOW HEAD, RoHS, M4 X 12

54

-

2

2

2

2

1-2168083-0

SCR, SKT HD CAP, RoHS, M4 X 10

53

-

1

1

1

1

5018030-1

NUT, HEX, REG, RoHS, M3

52

-

1

1

1

1

811242-5

BUMPER, HOLD DOWN

51

-

1

1

1

1

690753-2

SPACER, TONKER

50

-

-

-

-

1

18023-9

SCR, SKT HD CAP M4 X 6.0

49

-

-

-

-

-

2119652-1

FEED CAM, PRE FEED

48

-

-

-

-

-

2119653-1

FEED CAM, POST FEED

47

-

1

1

1

1

2119656-9

APPLICATOR BASIC ASSEMBLY, SF

46

-

1

-

1

1

2119370-1

RAM, AMP STYLE, SIDE FEED

44

-

1

1

1

1

2079383-7

SCR, BHSC, RoHS (M8 X 25)

41

-

1

-

1

1

2119645-1

DISC, NUMBERED FA WIRE ADJUSTMENT

40

-

1

-

1

1

2119957-1

APPLICATOR SHIM PACK

39

-

1

1

1

1

1-2119644-2

RAM WASHER, PRECISION

38

-

1

1

1

1

2119085-1

FA HEAD, ATLANTIC STYLE

37

-

1

-

1

1

2119092-1

BOLT, ADJUSTMENT

35

-

1

1

1

1

1752356-3

SUPPORT, TERMINAL

34

-

2

2

2

2

2079383-5

SCR, BHSC, RoHS (M4 X 20)

33

-

1

1

1

1

2161328-1

HEX HEAD, FLANGED, M5 x 8mm LONG

32

-

1

1

1

1

1-1320908-2

SPACER, STRIP GUIDE

30

-

1

1

1

1

2119959-2

ASSEMBLY, STRIP GUIDE

29

-

1

1

1

1

455888-3

SPACER, CRIMPER

28

-

1

1

1

1

1320928-2

STRIP GUIDE

24

-

1

1

1

1

2168083-2

SCR, SKT HD CAP, RoHS, M4 X 8.0

21

-

2

2

2

2

1-18028-2

WASHER, FLAT, REG M4

20

-

1

1

1

1

2119533-1

STRIPPER, SIDE FEED

19

-

1

1

1

1

2119806-1

INSERT, SHEAR

13

-

1

1

1

1

3-22280-3

SPRING, COMPRESSION

12

-

1

1

1

1

1-356885-4

STOP, SHEAR

11

-

1

1

1

1

2119805-1

SHEAR HOLDER, FRONT

10

-

1

1

1

1

318707-1

FLOATING SHEAR, FRONT

9

-

1

1

1

1

1

6-1633932-9

ANVIL, COMBINATION

8

-

1

1

1

1

2-240641-9

SPACER

7

-

-

-

-

-

-

6

-

1

1

1

1

2119757-8

DEPRESSOR, SHEAR

5

-

1

1

1

1

238011-9

BLOCK, CRIMPER SPACER

4

-

1

1

1

1

1

1-1803016-6

CRIMPER, INSULATION F

3

-

1

1

1

1

455888-5

SPACER, CRIMPER

2

-

1

1

1

1

1

6-456406-5

CRIMPER, WIRE PREMIUM

1

AMP 4805 REV 31MAR2000

Pro/ENGINEER DRAWING

8

7

6

5

4

3

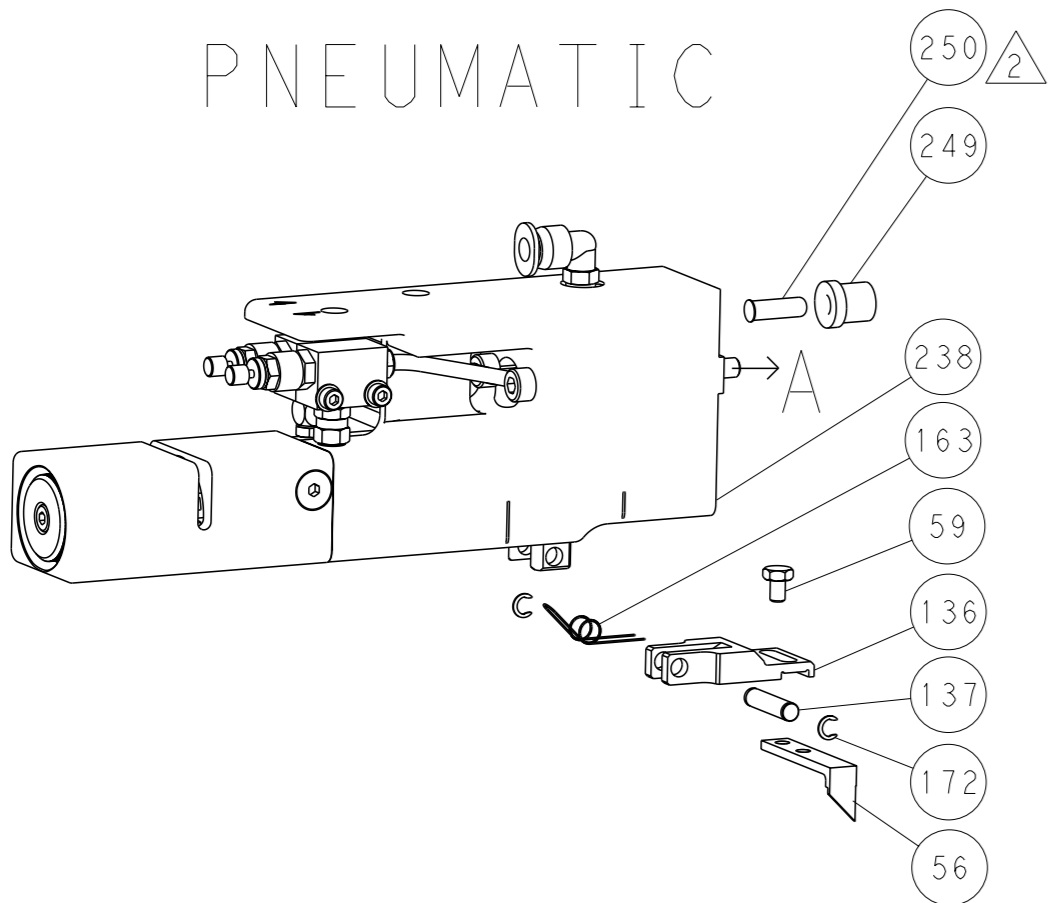
2

1

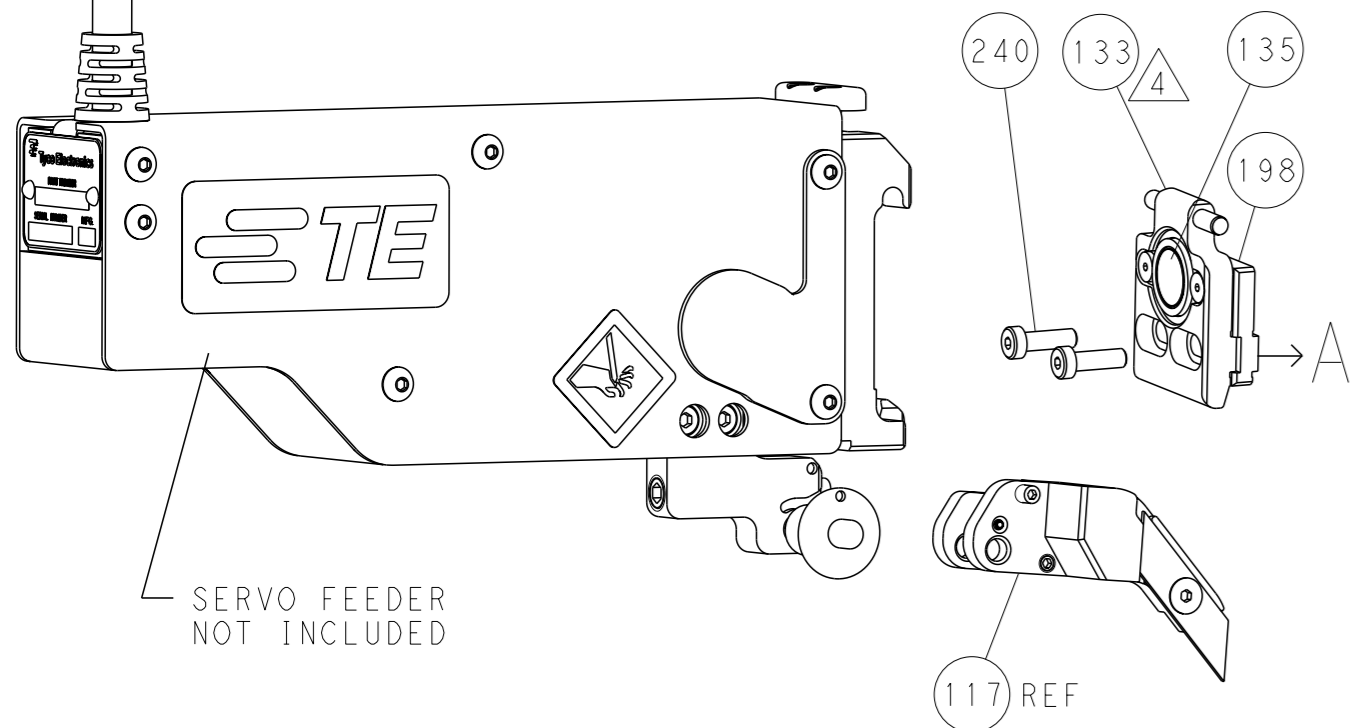
LOC		DIST		REVISIONS				
A	66	P	LYR	DESCRIPTION	DATE	DWN	APVD	
		-		SEE SHEET 1	-	-	-	

FEED TYPE

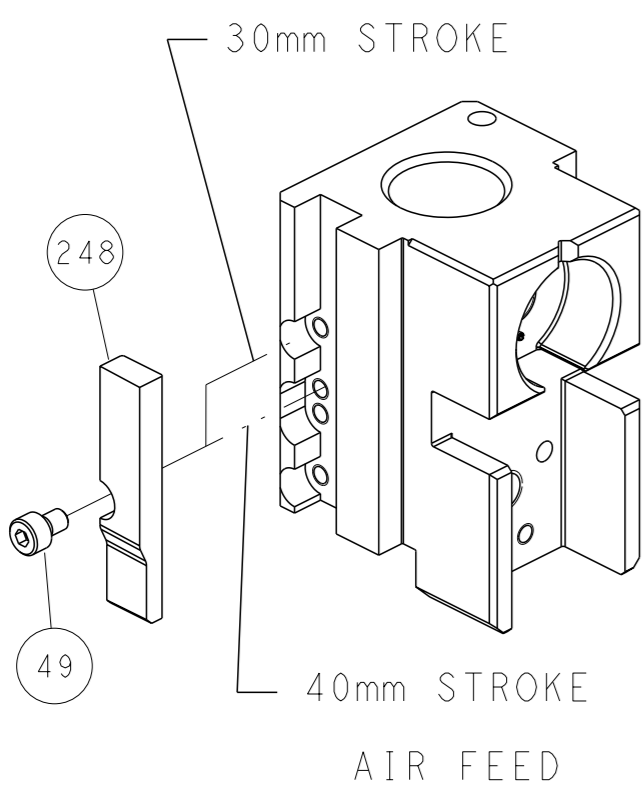
PNEUMATIC



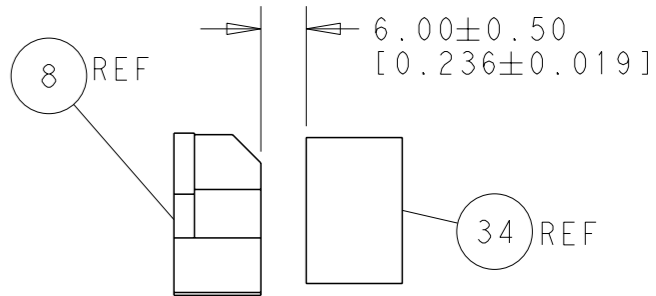
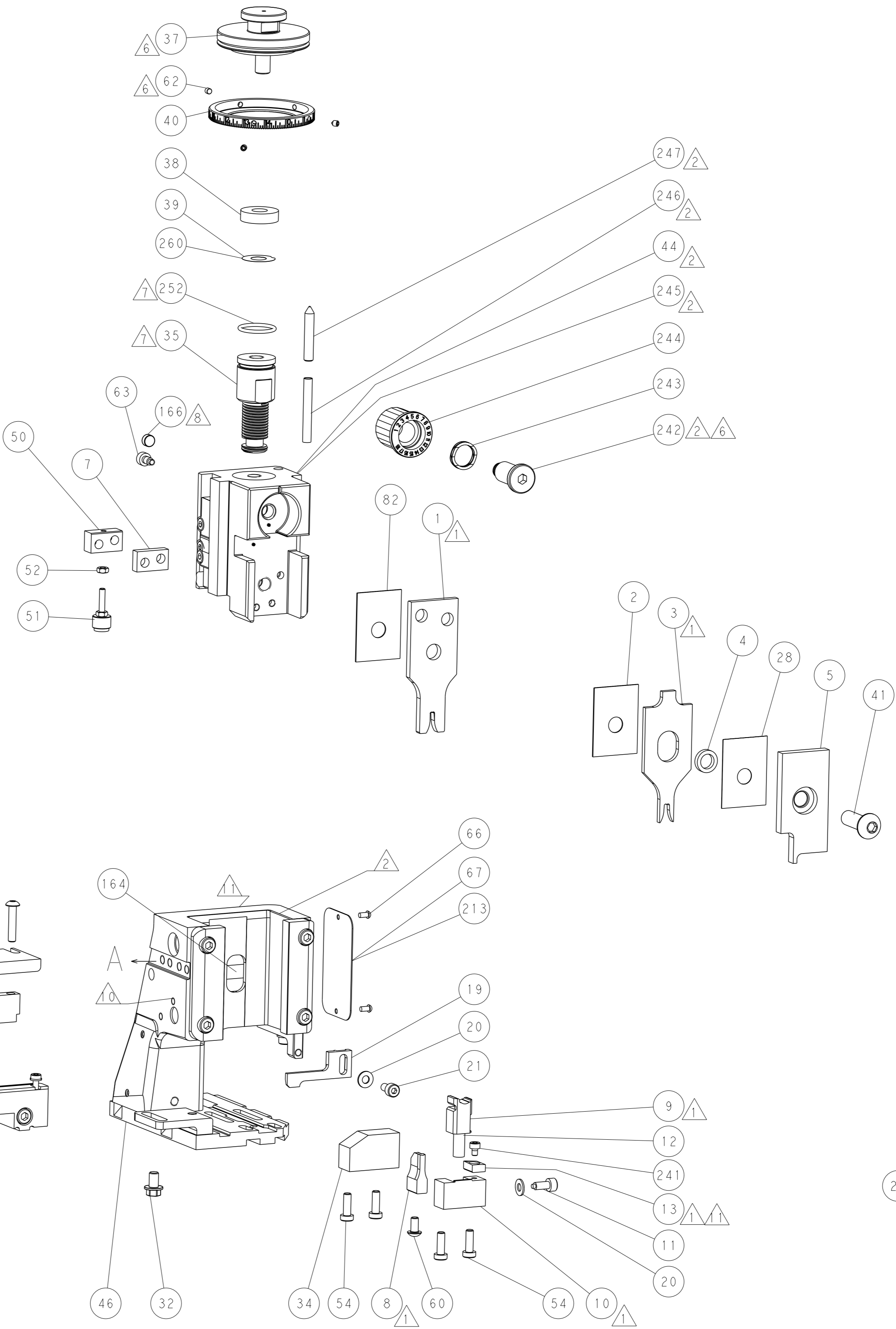
SERVO LATCH PLATE



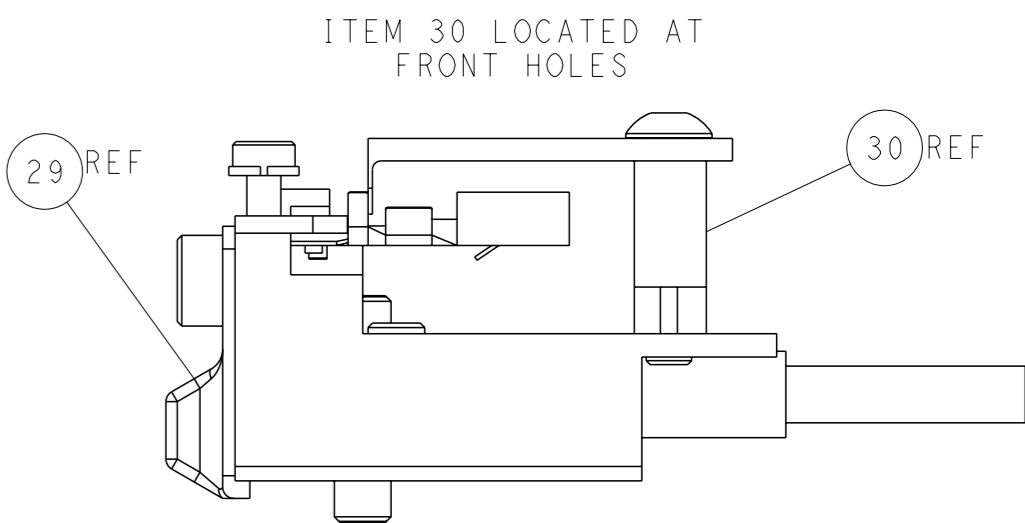
CAM POSITION



ATLANTIC VERSION
Shown on sheets 1 of 4 & 2 of 4
(Pacific version shown on sheets 3 of 4 & 4 of 4)



TERMINAL SUPPORT LOCATION

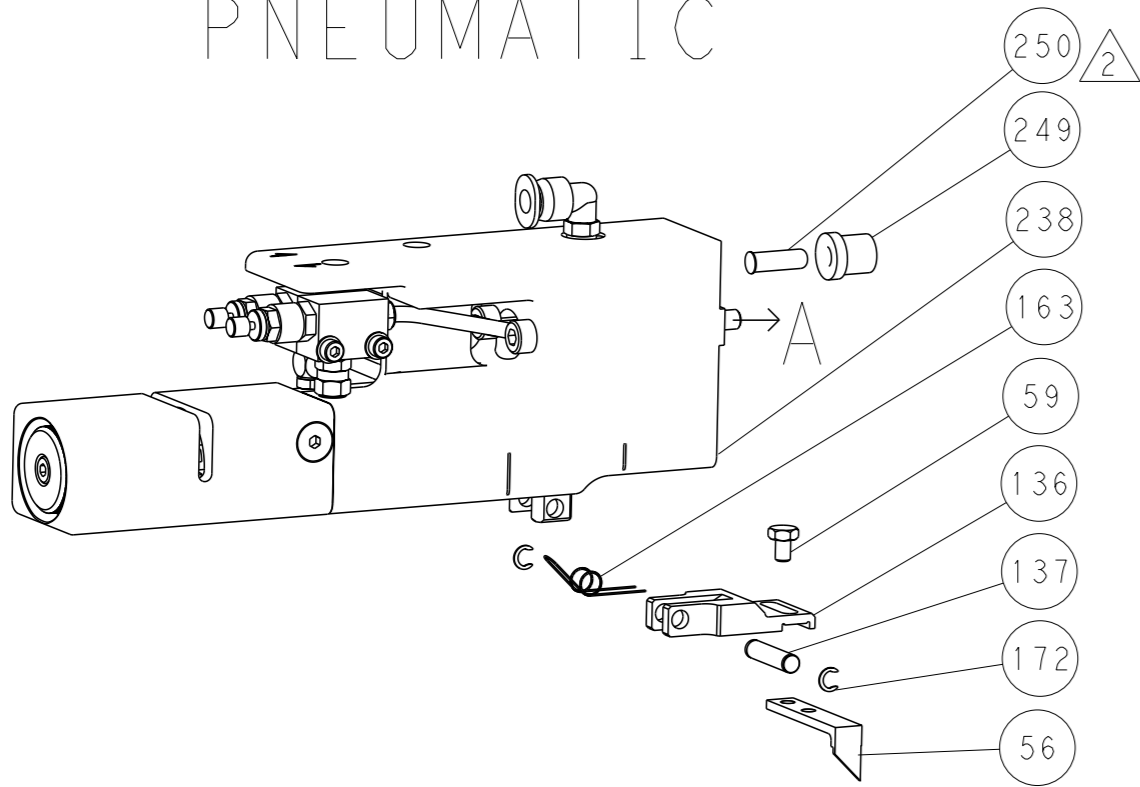


FEED TRACK POSITION
GUIDE BY INSULATION BARREL

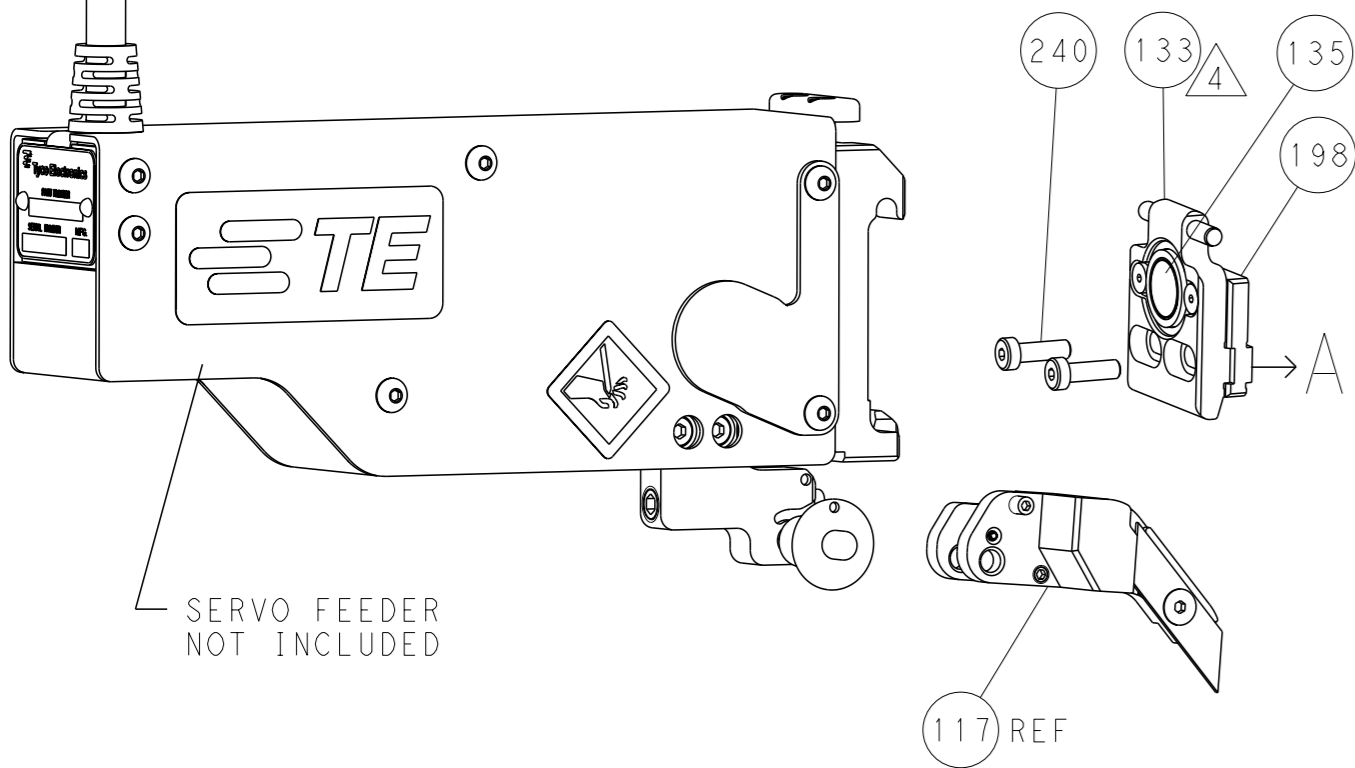
THIS DRAWING IS A CONTROLLED DOCUMENT FOR TYCO ELECTRONICS CORPORATION IT IS SUBJECT TO CHANGE AND TO CONTROLLING ENGINEERING DISCRETION SHOULD BE CONTACTED FOR THE LATEST REVISION				DWN Y. YIN 18JUL2014		TE Connectivity Harrisburg, PA 17105-3608			
CHK G. BAILEY 18JUL2014				APVD U. GUO 18JUL2014		NAME Ocean Side Feed Applicator -			

LOC		DIST		REVISIONS					
A		66		P	LYR	DESCRIPTION	DATE	DWN	APVD
					-	SEE SHEET 1	-	-	-

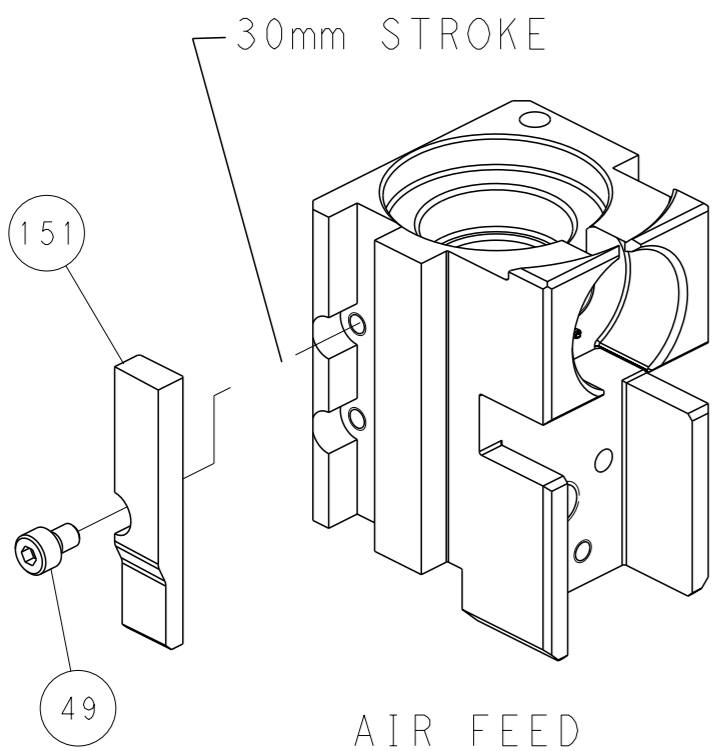
FEED TYPE
PNEUMATIC



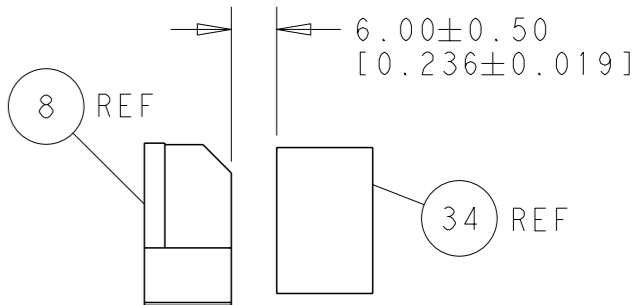
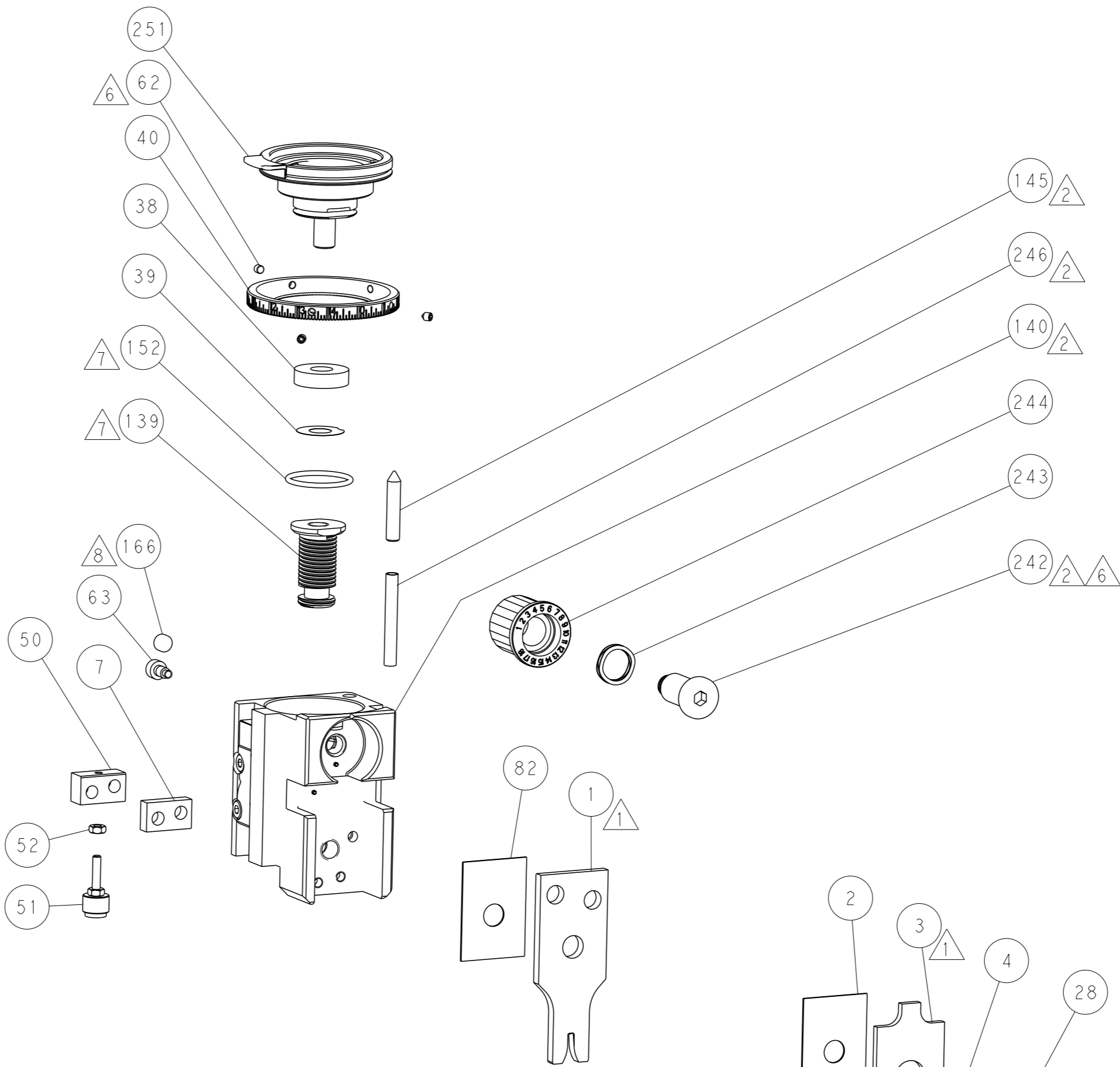
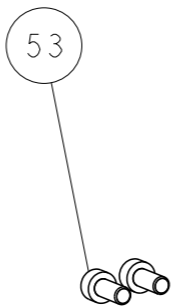
SERVO
LATCH PLATE



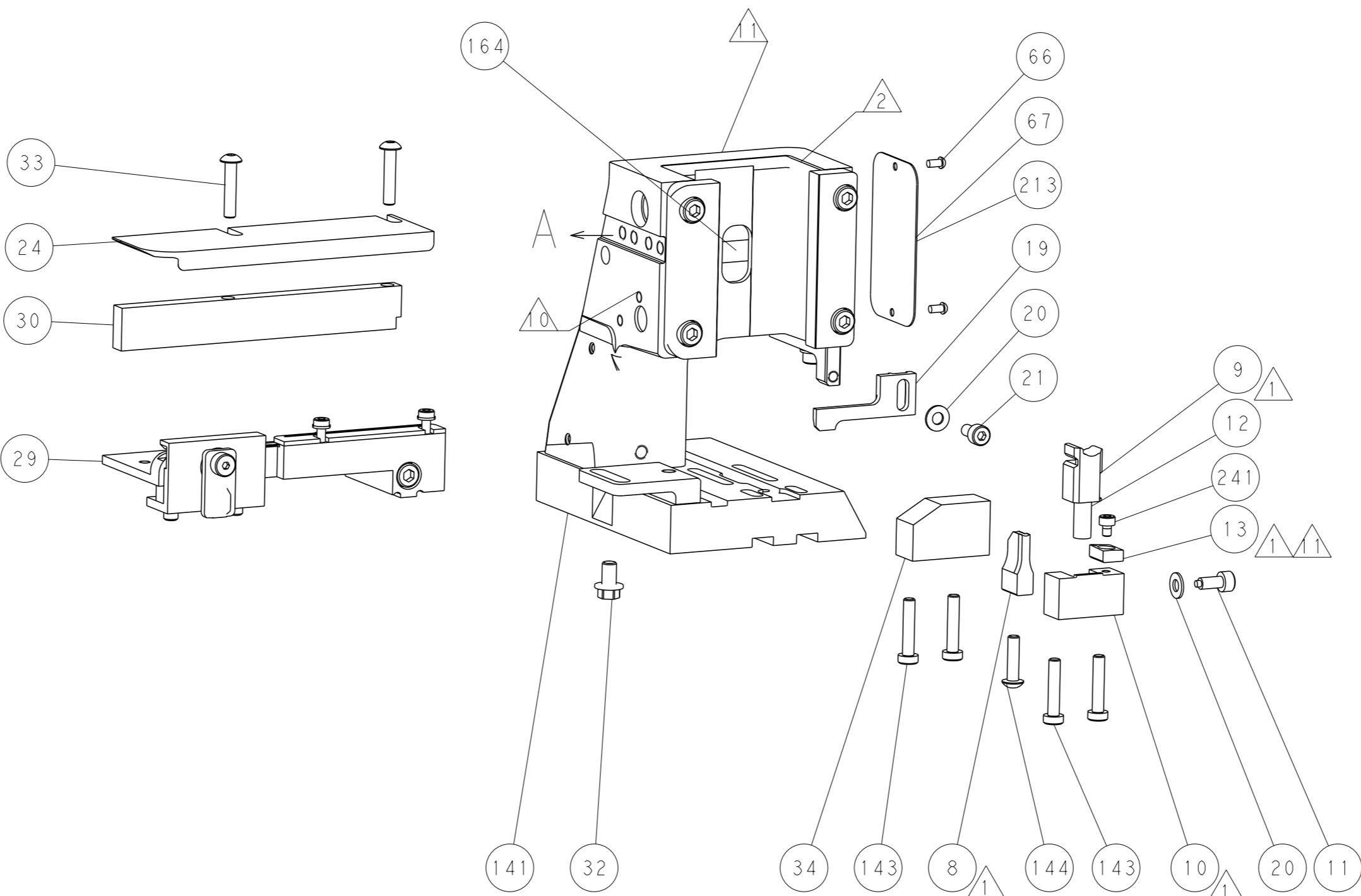
CAM POSITION



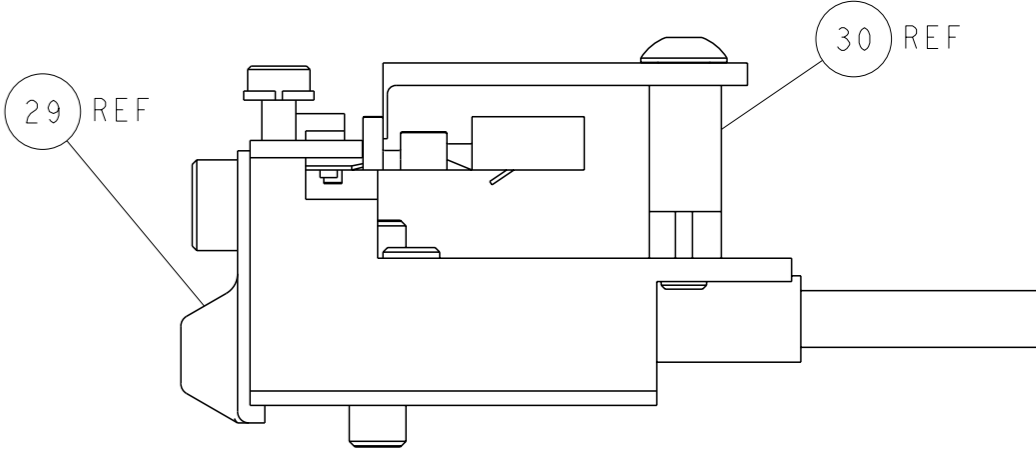
AIR FEED



TERMINAL SUPPORT LOCATION




ITEM 30 LOCATED AT
FRONT HOLES



FEED TRACK POSITION
GUIDE BY INSULATION BARREL

PACIFIC VERSION
Shown on sheets 3 of 4 & 4 of 4
(Atlantic version shown on sheets 1 of 4 & 2 of 4)

1:11 DRAWING IS A CONTROLLED DOCUMENT FOR TYCO ELECTRONICS CORPORATION IT IS SUBJECT TO CHANGE AND TO CONTROL AND ENGINEERING ORGANIZATION SHOULD BE CONTACTED FOR THE LATEST REVISION		DWN Y. YIN	18JUL2014	 TE Connectivity Harrisburg, PA 17105-3608	
DIMENSIONS: mm		CHK G. BAILEY	18JUL2014		
TOLERANCES UNLESS OTHERWISE SPECIFIED: 0 PLC ±.5 1 PLC ±0.13 2 PLC ±0.13 3 PLC ±0.013 4 PLC ±0.0001 ANGLES ±.5		APVD U. GUO	18JUL2014	NAME Ocean Side Feed Applicator	
MATERIAL -		PRODUCT SPEC -		SIZE A1	
FINISH -		APPLICATION SPEC -		CAGE CODE 00779	
WEIGHT -		DRAWING NO C=2266421		RESTRICTED TO -	
Customer Accessible Production Drawing		SCALE 1:2		SHEET 4 of 4	
				REV A	

SHEETS 1 & 2 ARE NOT REQUIRED FOR PACIFIC VERSION

Mouser Electronics

Authorized Distributor

Click to View Pricing, Inventory, Delivery & Lifecycle Information:

[TE Connectivity:](#)

[8-2266421-4](#) [8-2266421-6](#) [8-2266421-5](#)