

4

3

2

1


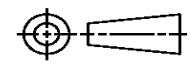
THIS DRAWING IS UNPUBLISHED. RELEASED FOR PUBLICATION
© COPYRIGHT ALL RIGHTS RESERVED.

LOC	DIST	REVISIONS			
P	LTR	DESCRIPTION	DATE	DWN	APVD
	C1	ECR-14-001881	11FEB2014	GK	HMR

REPLACED BY OCEAN STYLE APPLICATOR PART NUMBER 2151167-1

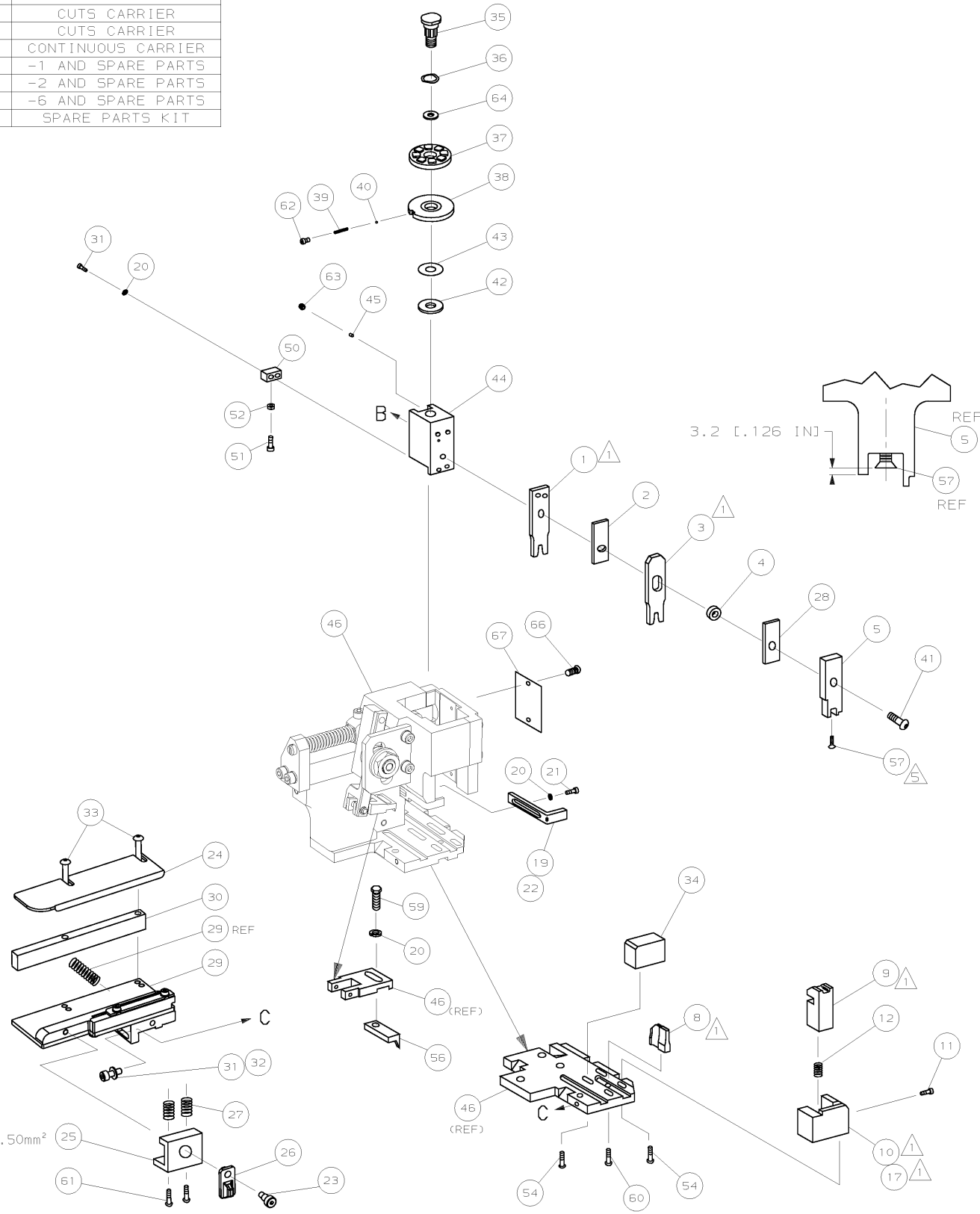
FOR REPLACEMENT PARTS FOR APPLICATOR 1426074
REFER TO ADDITIONAL PAGE(S). SPARE PARTS KIT (IF LISTED)
WILL REMAIN AVAILABLE.

THE REPLACEMENT OCEAN STYLE APPLICATOR HAS THE
SAME TERMINATOR/PRESS INTERFACE AS APPLICATOR
1426074

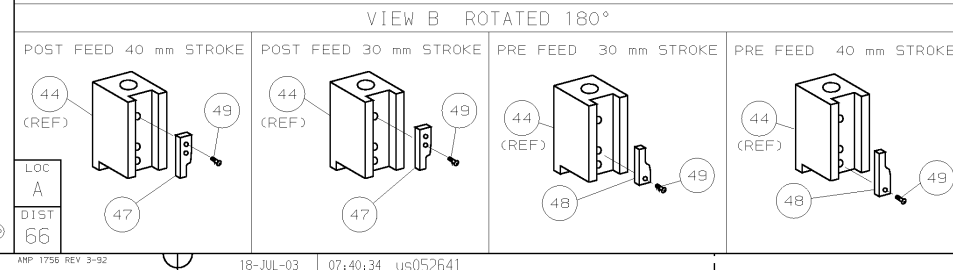
THIS DRAWING IS A CONTROLLED DOCUMENT.		DWN	GOPALAKRISHNA HV			TE Connectivity			
DIMENSIONS:		CHK	RAGHAVENDRA			NAME			
		TOLERANCES UNLESS OTHERWISE SPECIFIED:		APVD	SIDE FEED HD-I APPLICATOR				
		0 PLC ±	1 PLC ±	RAGHAVENDRA		PRODUCT SPEC			
MATERIAL		2 PLC ±	3 PLC ±	APPLICATION SPEC		SIZE	CAGE CODE	DRAWING NO	RESTRICTED TO
FINISH		4 PLC ±	ANGLES ±	WEIGHT		A3		©- 1426074	
				CUSTOMER DRAWING		SCALE	SHEET 1 OF 2	REV C1	

PART NUMBER	REV	FIRST USED	TERMINATOR	FEED TYPE	DESCRIPTION
1426074-1	C	-	LEADMAKER	MECH POST FEED	CUTS CARRIER
1426074-2	C	-	BENCH	MECH PRE FEED	CUTS CARRIER
1426074-6	C	-	LEADMAKER	MECH POST FEED	CONTINUOUS CARRIER
7-1426074-1	C	-	LEADMAKER	MECH POST FEED	-1 AND SPARE PARTS
7-1426074-2	C	-	BENCH	MECH PRE FEED	-2 AND SPARE PARTS
7-1426074-6	C	-	LEADMAKER	MECH POST FEED	-6 AND SPARE PARTS
7-1426074-7	A	-	-	-	SPARE PARTS KIT

CRIMP DATA (AMP TERMINAL)			
TERMINAL NAME: MICRO-TIMER CONT. FOR SINGLE WIRE SEALING			
CRIMP	SIZE	TYPE	RANGE
WIRE	1.57 [.062 IN]	F	0.20 - 0.50mm ²
INSUL	3.30 [.130 IN]	0	1.20-1.60 [.047-.063 IN]
WIRE STRIP LENGTH		APPL INSTRUCTION	
3.20-3.80 [.126-.149 IN]		408-8322	
TERMINAL	114-18081 (A)	-	FEED
APPL SPEC	114-18082 (B)	-	11.00 [.433 IN]
TERMINALS APPLIED			
TERMINAL	SEAL		
962875 (A)	964971	-	-
968045 (A)	963530	-	-
962964 (B)	-	-	-
963902 (B)	-	-	-
WIRE SIZE	CRIMP HEIGHT	PIN PN & LENGTH [IN]	
mm ² AWG			
0.50mm ²	1.12 ±0.03 [.044 ±.001 IN]	3-354779-4 [.3160]	
0.35mm ²	1.05 ±0.03 [.041 ±.001 IN]	4-354779-0 [.3190]	
0.25mm ²	1.00 ±0.03 [.039 ±.001 IN]	4-354779-4 [.3210]	
0.20mm ²	0.98 ±0.03 [.039 ±.001 IN]	4-354779-4 [.3210]	



- 1. RECOMMENDED SPARE PARTS.
- 2. GREASE RAM, CAM, CAM FOLLOWER AND FEED ROD LIGHTLY.
- 3. LUBRICATE DAILY PER THE APPLICATOR INSTRUCTION SHEET SUPPLIED WITH THE APPLICATOR.
- 4. THIS APPLICATOR APPLIES TERMINAL WITH A SEAL.
- 5. APPLY TORQ-SEAL IN ALLEN SOCKET TO FILL HOLE AFTER FLAT HD HAS BEEN ADJUSTED TO CORRECT HEIGHT AT QUALIFICATION. APPLY #1-23419-5 LOC-TITE TO THREADS.
- 6. SEAL 964971-1 TO BE USED WITH WIRE SIZES OF 0.35mm² & 0.50mm² (INSULATION RANGE 1.20-1.60mm).
- SEAL 963530-1 TO BE USED WITH WIRE SIZE OF 0.50mm² (INSULATION RANGE 1.40-1.90mm).



QTY	REQD	PER	ASSY	PART NO	DESCRIPTION	ITEM NO			
-	1	1	1	1	1	1426074	PRINT, APPLICATOR LOG SHEET	73	
-	1	1	1	1	1	1338705-1	DOCUMENTATION PACKAGE	72	
-	-	-	-	-	-	-	-	71	
-	-	-	-	-	-	-	-	70	
-	-	-	-	-	-	-	-	69	
-	-	-	-	-	-	-	-	68	
-	1	1	1	1	1	461264-1	PLATE, IDENTIFICATION	67	
-	2	2	2	2	2	21017-2	SCR,DRIVE (#2X.19) ID PLATE	66	
-	-	-	-	-	-	-	-	65	
-	1	1	1	1	1	986950-1	WASHER, FLAT PRECISION	64	
-	1	1	1	1	1	3-18031-0	SCR,SKT SET (M6X6) RAM	63	
-	1	1	1	1	1	18023-9	SCR,SHC (M4X6) INS DISC	62	
-	2	2	2	2	2	1-18024-5	SCR,BHC (M5X25) DRAG	61	
-	1	1	1	1	1	18024-7	SCR,BHC (M4X10) ANVIL	60	
-	1	1	1	1	1	5-18022-2	SCR,HEX (M4X8) FEED FINGER	59	
-	-	-	-	-	-	-	-	58	
-	1	1	1	1	1	985575-3	SCR,FHC (M3X10) DEP	57	
-	1	1	1	1	1	1338685-1	PAWL, FEED	56	
-	-	-	-	-	-	-	-	55	
-	4	4	4	4	4	18024-8	SCR,BHC (M4X12) SHEAR HOLDER	54	
-	-	-	-	-	-	-	-	53	
-	1	1	1	1	1	18030-1	NUT,HEX (M3) HOLD DOWN	52	
-	1	1	1	1	1	811242-5	BUMPER, HOLDDOWN	51	
-	1	1	1	1	1	690753-2	SPACER, TONKER	50	
-	1	1	1	1	1	18024-3	SCR,BHC (M3X10) CAM	49	
-	-	-	-	-	-	-	-	48	
-	1	1	1	1	1	1338675-1	CAM, PRE FEED 30 & 40 mm ST	48	
-	1	1	1	1	1	1338676-1	CAM, POST FEED 30 & 40 mm ST	47	
-	1	1	1	1	1	1320999-3	APPLICATOR BASIC SUBASSY	46	
-	1	1	1	1	1	690191-1	PLUG, NYLON	45	
-	1	1	1	1	1	1338660-1	RAM	44	
-	1	1	1	1	1	690125-1	WASHER, LAMINATED	43	
-	1	1	1	1	1	690124-1	WASHER, RAM	42	
-	1	1	1	1	1	2-18024-6	SCR,BHC (M8X25) RAM	41	
-	1	1	1	1	1	23241-1	BALL, STEEL	40	
-	1	1	1	1	1	2-22278-7	SPRING, COMPRESSION	39	
-	1	1	1	1	1	1320922-3	DISC, INSULATION	38	
-	1	1	1	1	1	354777-1	WIRE DISC, PLASTIC	37	
-	1	1	1	1	1	22480-5	WASHER, SPRING	36	
-	1	1	1	1	1	690212-1	POST, RAM	35	
-	1	1	1	1	1	1320934-6	SUPPORT, TERMINAL	34	
-	2	2	2	2	2	1-18024-0	SCR,BHC (M4X20) STRIP GUIDE	33	
-	1	1	1	1	1	18027-2	WASHER, FLAT (M4)	32	
-	3	3	3	3	3	1-18023-2	SCR,SKT CAP (MAX12) MOUNT BLOCK	31	
-	1	1	1	1	1	1320908-1	SPACER, STRIP GUIDE	30	
-	1	1	1	1	1	1633073-2	STRIP GUIDE PLATE ASSY	29	
-	1	1	1	1	1	1-455888-7	SPACER, FRONT SHEAR DEP	28	
-	2	2	2	2	2	1-22284-0	SPRING, DRAG	27	
-	1	1	1	1	1	356835-1	LEVER, DRAG RELEASE	26	
-	1	1	1	1	1	240792-1	DRAG, TERMINAL	25	
-	1	1	1	1	1	1320928-1	PLATE, STRIP GUIDE	24	
-	1	1	1	1	1	980371-4	SCR,SHC SHLD	23	
-	1	1	1	1	1	690472-2	STRIPPER	22	
-	1	1	1	1	1	1-18023-1	SCR,SHC (M4X10) STRIPPER	21	
-	4	4	4	4	4	18025-2	WASHER,LOCK (M4) STRIPPER	20	
-	-	-	-	-	-	-	-	19	
-	1	1	1	1	1	690472-1	STRIPPER	18	
-	-	-	-	-	-	-	-	17	
-	-	-	-	-	-	-	-	16	
-	-	-	-	-	-	-	-	15	
-	-	-	-	-	-	-	-	14	
-	-	-	-	-	-	-	-	13	
-	1	1	1	1	1	5-22280-0	SPRING, SHEAR	12	
-	1	1	1	1	1	356885-5	STOP, SHEAR	11	
-	-	-	-	-	-	-	-	10	
-	1	1	1	1	1	1-1320921-0	HOLDER, SHEAR, FRONT (CUT)	9	
-	1	2	2	2	2	1-1333202-1	SHEAR, FLOAT (FRONT)	8	
-	-	-	-	-	-	-	-	7	
-	-	-	-	-	-	-	-	6	
-	1	1	1	1	1	1338680-1	DEPRESSOR, SHEAR (FRONT)	5	
-	1	1	1	1	1	238011-2	SPACER, BLOCK CRIMPER	4	
-	1	2	2	2	2	1-456135-6	CRIMPER, INSULATION	3	
-	1	1	1	1	1	1-455888-0	SPACER, CRIMPER	2	
-	1	2	2	2	2	3-456403-4	CRIMPER, WIRE	1	
-77	-76	-72	-71	-6	-2	-1	PART NO	DESCRIPTION	ITEM NO

QTY REQD PER ASSY

REVISION OF EACH ASSY NO (WHEN BLANK, USE DWG REVISION)

PARTS LIST

DIMENSIONS: mm [INCHES]

DO NOT SCALE PRINT.

TOLERANCES UNLESS OTHERWISE SPECIFIED:

1 PLC DEC ±0.5 [.02 IN]

2 PLC DEC ±-

3 PLC DEC ±-

ANGLES ±-

SURF TEXTURE.

REMOVE BURRS, BREAK SHARP EDGES RO.3R MAX

DR: M.CLIFFORD

CHK: -

APP: 10AUG00

REL: 05-10-2000

HT TR: -

FIN: -

AMP Incorporated

Harrisburg, PA 17105-3608

NAME: SIDE FEED HD-I APPLICATOR

SCALE: -

DWG NO: 1426074

MACHINE REF: HD-I APPL

SHEET: 1 OF 1

REV: C

CASE CODE: 00779

CUSTOMER AND ASSEMBLY DRAWING

RESTRICTED TO: -

THIS DRAWING IS A CONTROLLED DOCUMENT

LAYOUT L1426074 SET UP GAGE 458637-3

2000

PREPARED FOR PUBLICATION BY AMP INCORPORATED. ALL RIGHTS RESERVED.

THIS DRAWING IS UNBUILT. © COPYRIGHT 2000

Mouser Electronics

Authorized Distributor

Click to View Pricing, Inventory, Delivery & Lifecycle Information:

[TE Connectivity:](#)

[1426074-2](#)