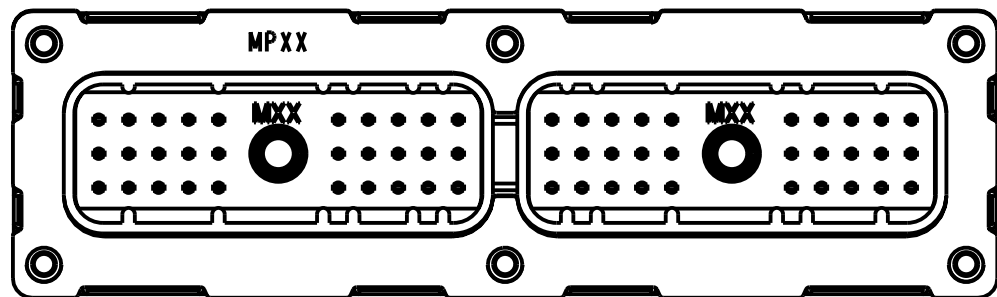


DRAWING REVISIONS			
REV	DOCUMENT	APP	DATE
D	ADDED: ONLY IF... CHG: PANEL SCREW... PER ECN #01A683		

NOTES:

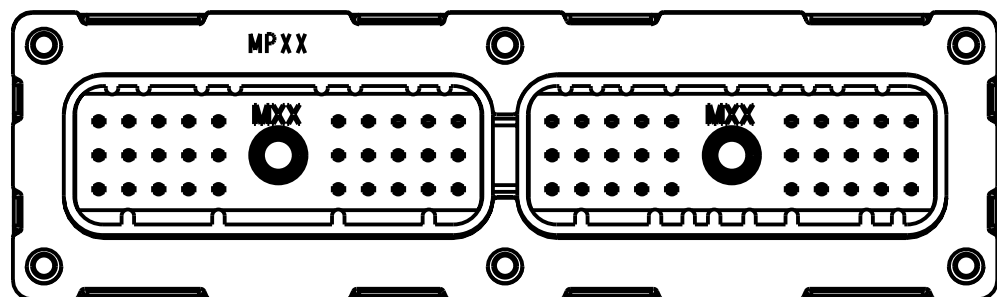
- ALL DIMENSIONS IN [ ] ARE IN MILLIMETERS.
- .650 [16.51] TO BE MEASURED AT THE CENTER OF WIDTH OF CONNECTOR.
- MATERIAL:  
TERMINAL BLADE: BRASS WITH TIN-LEAD OVER NICKEL PLATING.  
JACKSCREW BUSHING: BRASS, UNPLATED.  
INSULATOR: 30% GLASS FILLED PBT POLYESTER.  
PANEL SEAL: SILICON RUBBER COLOR: BLUE.  
INTERFACE SEAL: SILICON RUBBER COLOR: BLUE.
- SOLDERABILITY MEETS USCAR 5.4.1.
- MATES WITH CINCH PUSH-TO SEAT HARNESS CONNECTOR (CONSULT FACTORY).
- STANDARD CELL PACK, QUANTITY 75 PIECES.
- RECOMMENDED TORQUE:  
JACKSCREW 15-20 INLBS [1.7-2.3 Nm]  
PANEL SCREW 8.5±0.5 INLBS [0.9±0.1 Nm]  
PCB RETENTION SCREW 2-3 INLBS [0.23-0.34 Nm]

UNITS ENGLISH		PRO/E	<b>Cinch</b>		1700 FINLEY RD. LOMBARD, IL. 60148
DO NOT SCALE DRAWING		DRAWN BY T. RANDAZZO	DATE 07/16/93	TITLE CONNECTOR ASSEMBLY, RECEPTACLE 60 POSITION	
		DESIGN ENGINEER T. RANDAZZO	07/16/93	MATERIAL	
		DESIGN ENGINEERING MGR. A. SHAH	05/17/94	CONTROL SPEC NUMBER	
		MFG. ENGINEERING J. ROUSSEAU	05/17/94	PROJECT NUMBER C13184	
THIS DOCUMENT IS THE PROPERTY OF CINCH. NEITHER THIS DOCUMENT NOR ANY OF THE INFORMATION CONTAINED IN IT MAY BE DUPLICATED OR DISCLOSED WITHOUT PRIOR WRITTEN CONSENT OF CINCH.		QUALITY ASSURANCE R. SCHLACKS	05/18/94	CAD FILE NUMBER 5810160001S	DRAWING NUMBER 581 01 60 001S
				CAGE IDENT NO. SIZE 71785 B	SCALE 1.000 SHEET 1 OF 2



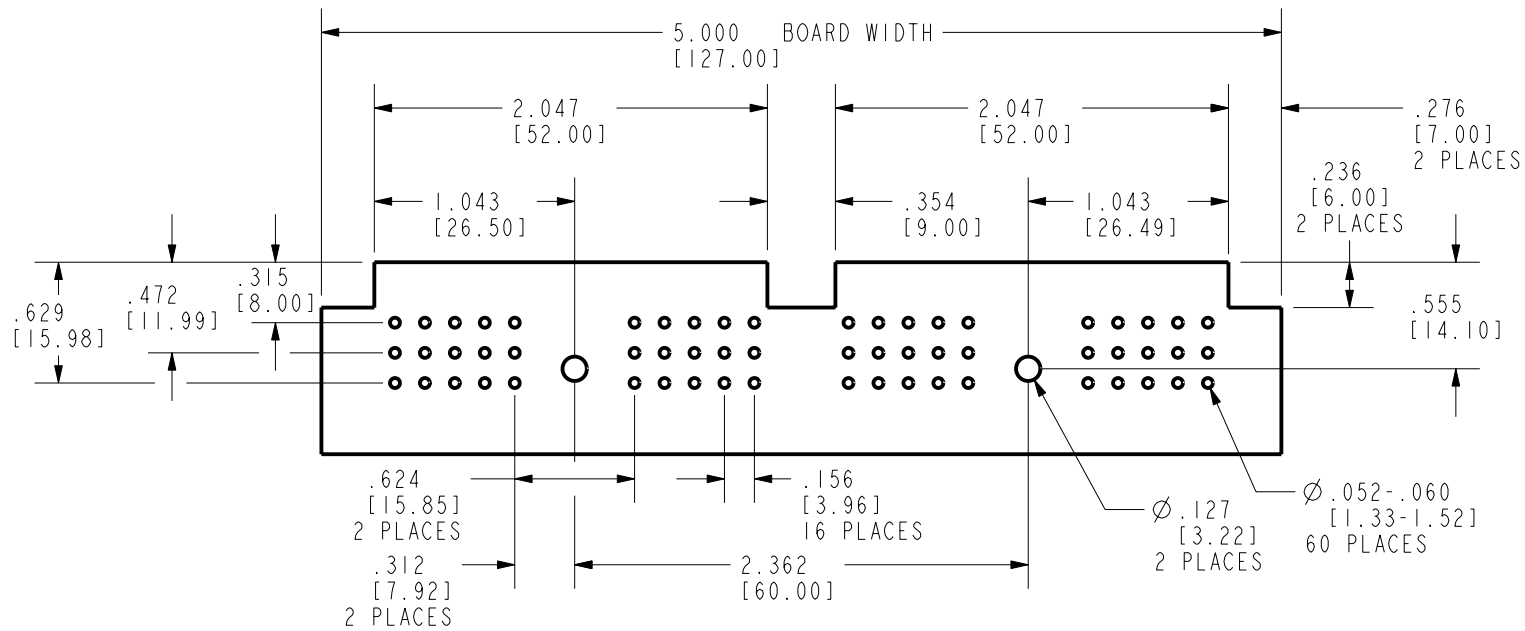
**POLARIZATION A**

581 01 60 001  
HOUSING COLOR : BLACK



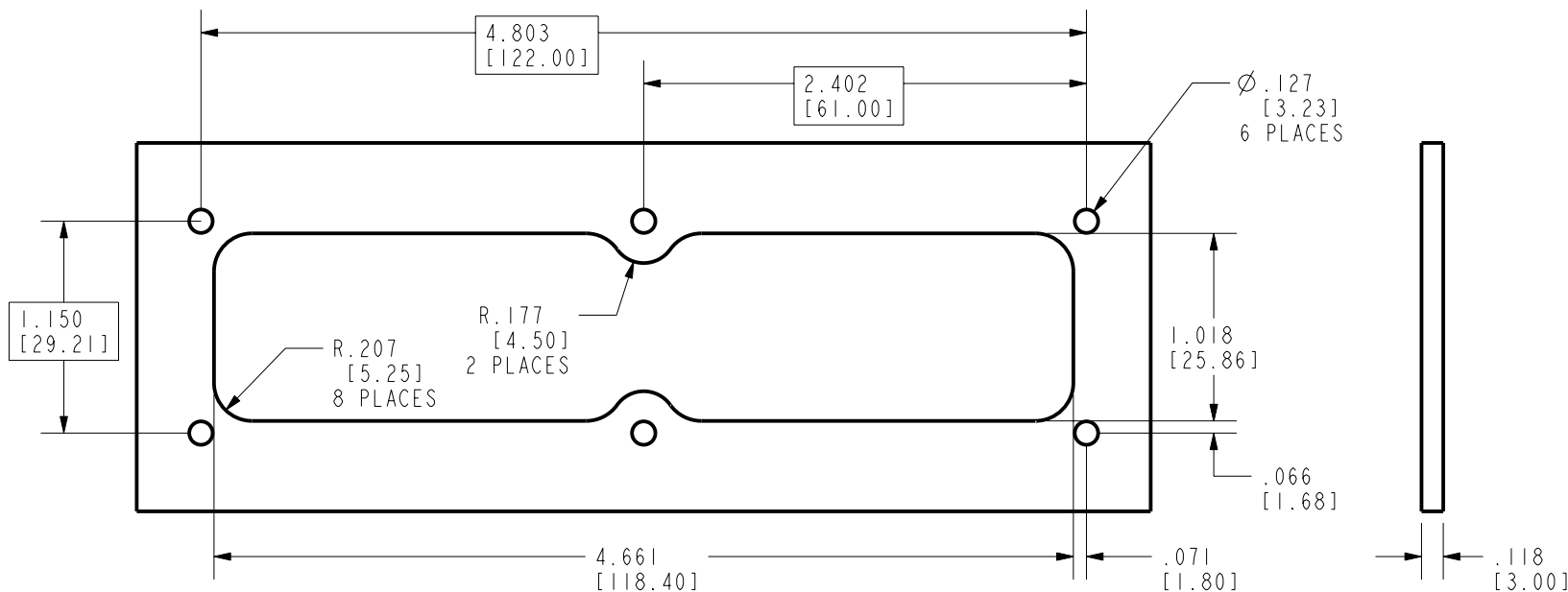
**POLARIZATION B**

581 01 60 002  
HOUSING COLOR : NATURAL, WHITE



**RECOMMENDED PC BOARD LAYOUT**

SCALE 1.000



**MOUNTING HOLE-MODULE CASE OPENING**

SCALE 1.000

UNITS	ENGLISH		<b>Cinch</b>		1700 FINLEY RD LOMBARD, IL. 60148		
	DO NOT SCALE DRAWING						
		TITLE		CONNECTOR ASSEMBLY, RECEPTACLE 60 POSITION			
		PRO/E DRAWING					
		CAD FILE NUMBER		DRAWING NUMBER			REV
THIS DOCUMENT IS THE PROPERTY OF CINCH. NEITHER THIS DOCUMENT NOR ANY OF THE INFORMATION CONTAINED IN IT MAY BE DUPLICATED OR DISCLOSED WITHOUT PRIOR WRITTEN CONSENT OF CINCH.		5810160001S		581 01 60 001S		D	
		CAGE IDENT NO. SIZE		SCALE		SHEET 2 OF 2	
		71785 B					

# Mouser Electronics

Authorized Distributor

Click to View Pricing, Inventory, Delivery & Lifecycle Information:

Cinch Connectivity Solutions:

[5810160002](#) [5810160001](#)