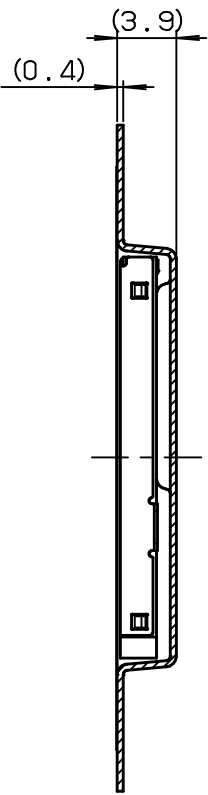
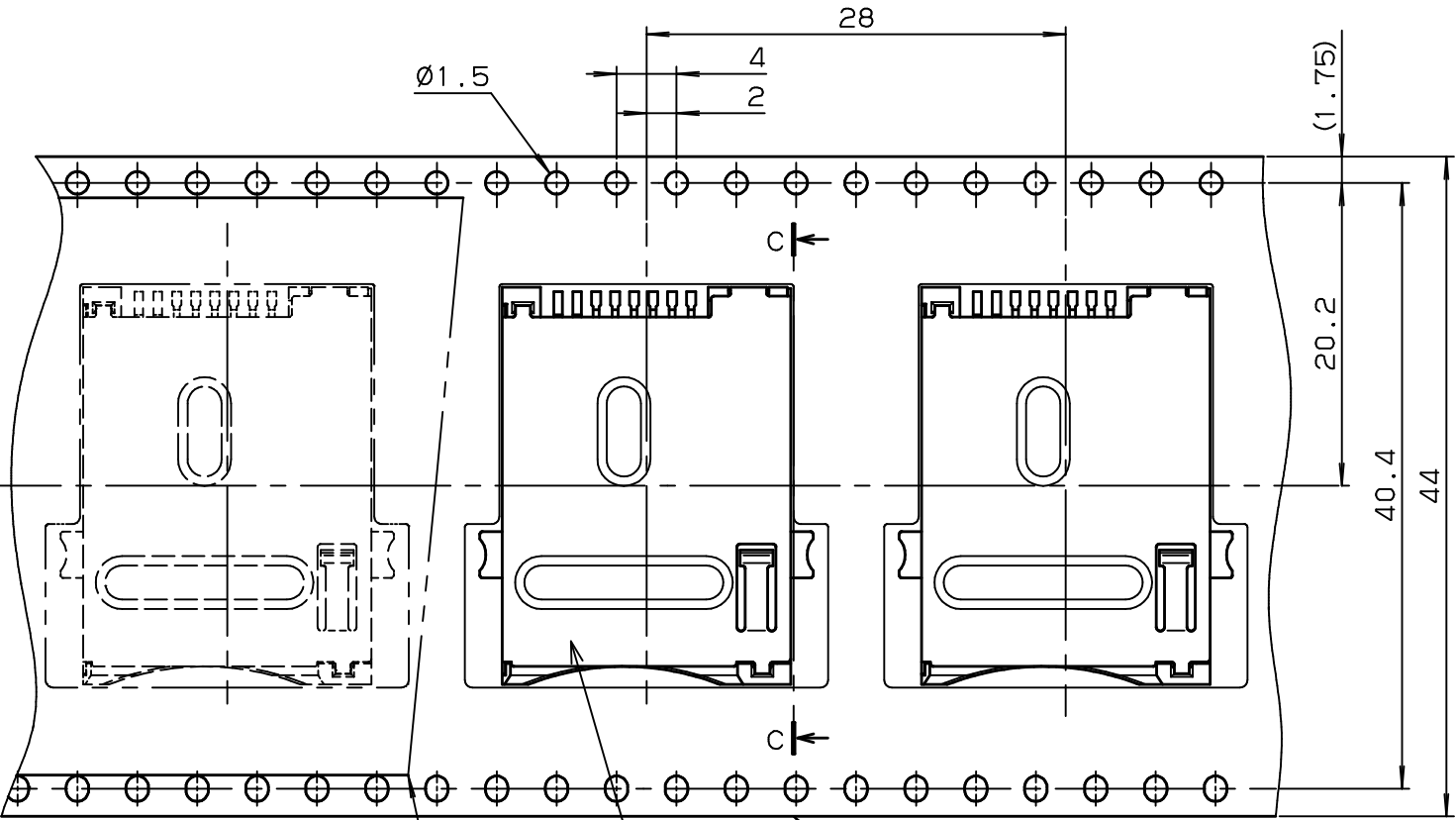
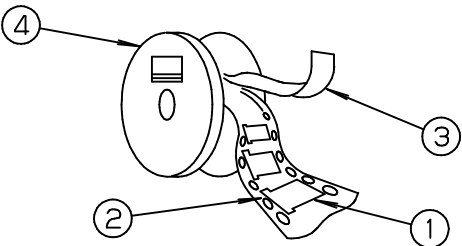


NO.	DESCRIPTION	PART NO.	QTY	MATERIAL	DRW NO.	REMARKS
1	CONNECTOR	00 5036 006 XXX 862	500			
2	EMBOSSED TAPE		1	POLYSTYRENE		
3	TOP COVER TAPE		1	POLYSTYRENE		
4	REEL		1	POLYSTYRENE		



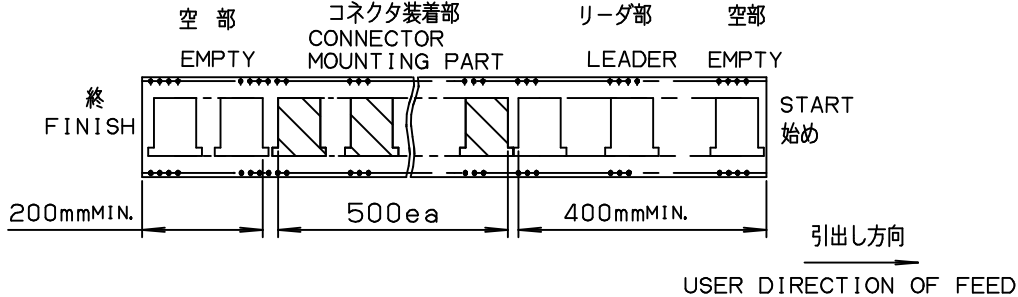
注 記 NOTE

1. 納入数量 : 500個/reel  
QUANTITY : 500 ea/reel
2. 納入時のリール巻き方向  
REELING DIRECTION  
IN DELIVERY



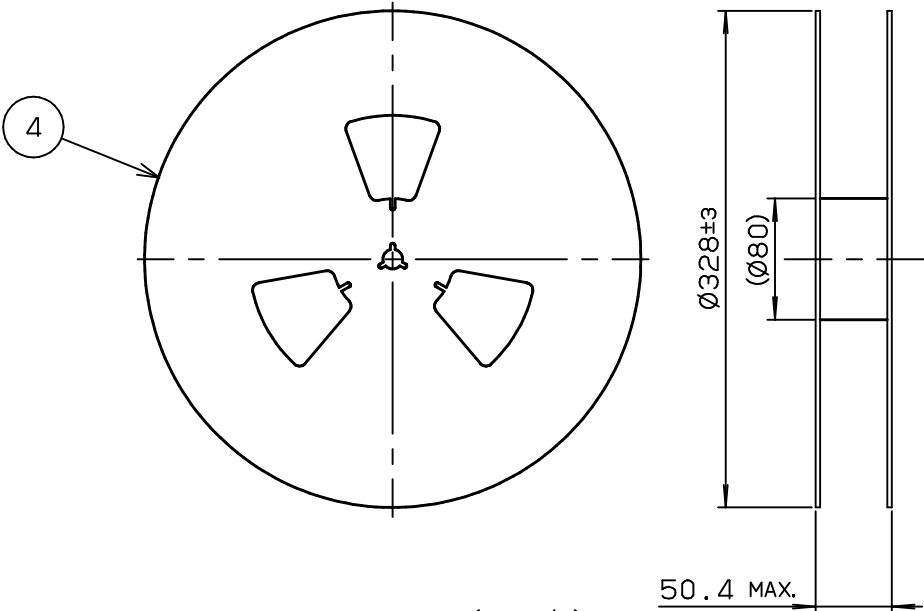
3. 引出し方向


USER DIRECTION OF FEED



SECT. C-C

ORDERING CODE 04 5036 006 XXX 862  
SERIES 5036:SERIES 5036  
NO. of CONT 006:6P  
VARIATION 1 099:With BOSS (PITCH 15.54)  
100:With BOSS (PITCH 13.52)  
101:Without BOSS  
FINISH CODE 862:UNDER COATED:NI 1.5~2.5 $\mu$ m  
CONTACT AREA:Au0.5 $\mu$ m MIN  
TAIL AREA:SnPb 2~4 $\mu$ m (Sn:Pb=9:1)



TOLERANCE / 一般公差 (S)		PRODUCT SPEC / 製品規格								
X <10 ±0.2 10≤ X <30 ±0.25 30≤ X ±0.3										
	UNIT		ANGLE		O	EDN-137	2-26-03			
	mm		3RD		NO.	EDN/DCN	DATE	ISSUE	CHECKED	
	SCALE		DATE		PART NAME / 品名					
ANGLE / 角度		2 / 1		2-26-03		SERIES 5036 TYPE S/E METAL SHELL SIM CONNECTOR ASSY SMT 44mm TAPING				
±3°						PART NO. / 型番				
DRAWN		DESIGNED		CHECKED		APPROVED		04 5036 006 XXX 862		
T. MORI		T. MORI								
 KYOCERA ELCO CORPORATION				DWG NO. / 図番				SHEET / REV		
				BJS 5036010				1 / 1   0		



# Mouser Electronics

Authorized Distributor

Click to View Pricing, Inventory, Delivery & Lifecycle Information:

[Kyocera:](#)

[045036006299862+](#) [045036008210862+](#)