

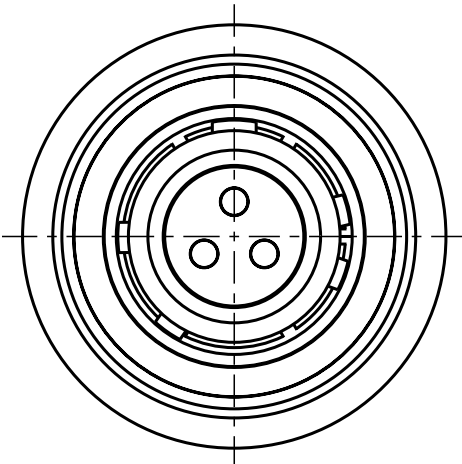
Für diese Unterlage behalten wir uns alle Rechte vor, auch für den Fall der Patentierung oder Gebrauchsmusteranmeldung. Sie darf ohne unsere vorherige schriftliche Zustimmung weder vervielfältigt noch sonstwie benutzt, noch Drucken zugänglich gemacht werden.

Nur rol gestempelte oder auf Laufkarte gedruckte Dokumente unterliegen dem Änderungsdienst und sind zur Fertigung freigegeben. Only red stamped or on jobcard printed documents are managed. These documents are approved for production.

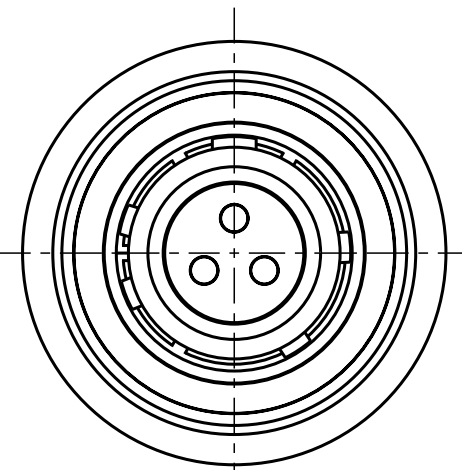
All Rights reserved, including possible patents or trademarks. Documents shall not be provided to a third party or duplicated in any form without prior written permission.

CAD: Pro/ENGINEER

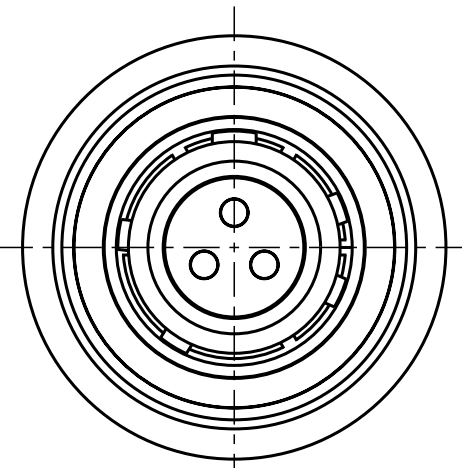
Additional coding
View in direction B



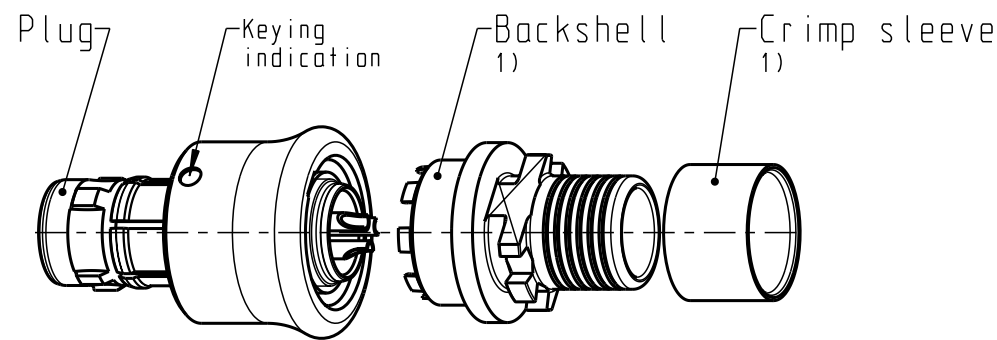
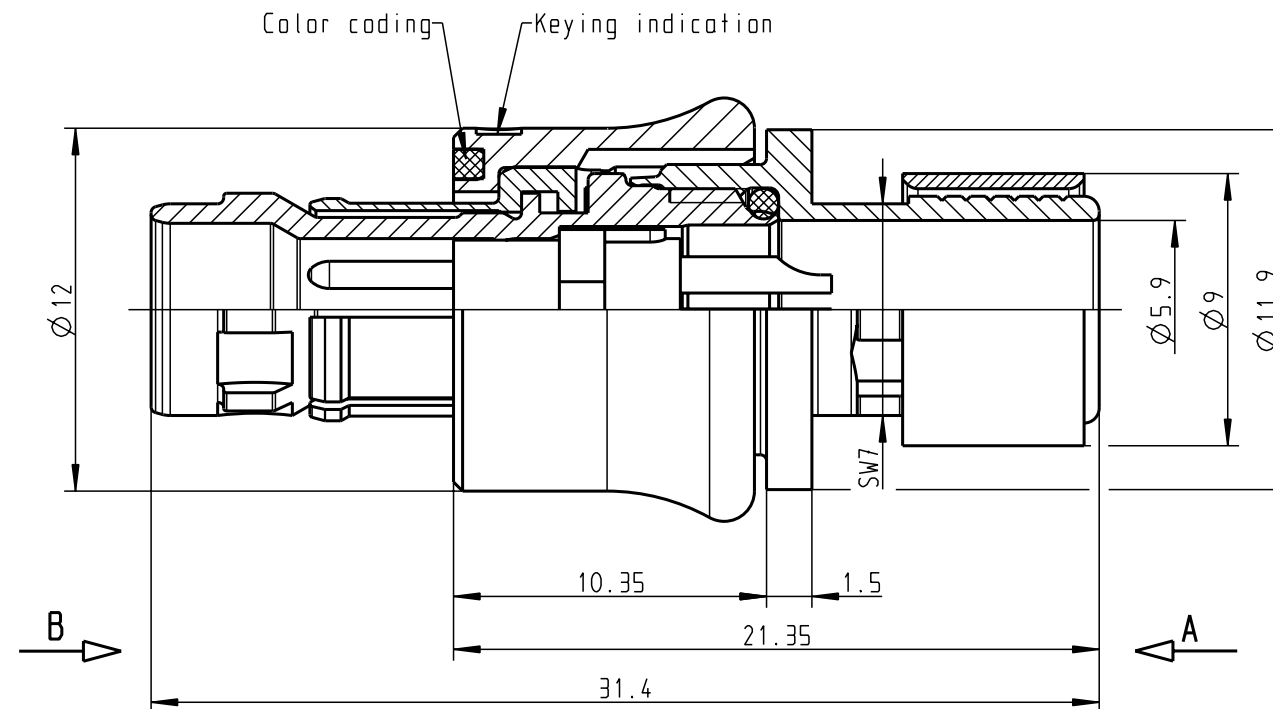
S10YBR-P03XJG0-0000
Mechanical coding: B
Color coding: red



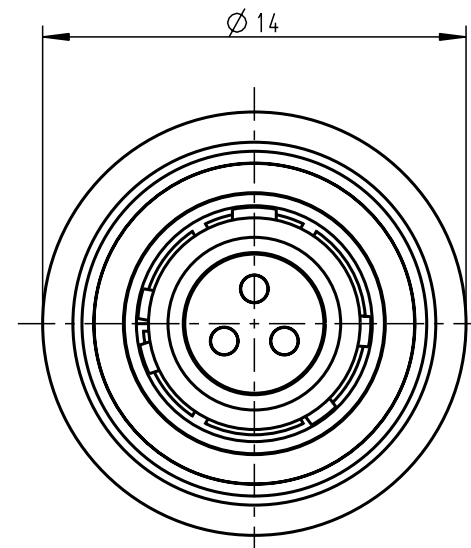
S10YCR-P03XJG0-0000
Mechanical coding: C
Color coding: blue



S10YDR-P03XJG0-0000
Mechanical coding: D
Color coding: green

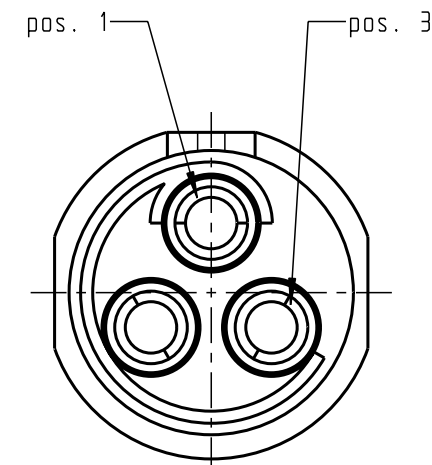


Delivery condition
2:1



S10YAR-P03XJG0-0000
Mechanical coding: A
Color coding: light brown

Only insert
View in direction A
8:1



Technical information

- Max. cable Ø5.5mm (Based on cable with one braided shield)
- Solder contacts: AWG22
- Current load: 10A@Δt40° (Single contact)
10A@Δt40° (Insert)
- Test voltage: 1200V (acc. SAE AS 13441:1998, Contact to contact)
- Rated voltage: 400V (acc. SAE AS 13441:1998) 2)

- For more technical information and accessories
see catalogue (www.odu.de/amc)

1) For crimp information, torque, etc. see
assembly instruction 010.645.001.000.002
(www.odu.de/amc/assembly)

2) Maximal operating voltage at sea level up to 2.000m.
Rated voltage applies no other electrical safety standard. In
case other standards rule a specific use of the connector, the
application specific safety criteria shall be considered first.
This must be evaluated in the frame of equipment engineering.

All shown connectors are according
to DIN EN 61984:2009
connectors without breaking capacity (COC) !

				Dimensions without tolerances acc. to middle DIN ISO 2768		PE-modell-nr.:	
						CAD-nr.:	00051442
				2012	date	name	designation:
				prep.	11.01.	M. Meier	Push-Pull Plug AMC Standard Version
				app.			scale: 4:1
				norm.			drawing nr.:
						S10Y.R-P03XJG0-0000	
						replacement for:	
						nr.	



otto dunkel gmbh

Mouser Electronics

Authorized Distributor

Click to View Pricing, Inventory, Delivery & Lifecycle Information:

ODU USA:

[S10YAR-P03XJG0-0000](#)